

# Pollock Workgroup

Members include representation from the Board and Council, as well as trawl, seine, jig, and processing sectors. Expanded to include WGGOA and community representation for future meetings.

Goals and objectives are to gather information and provide perspectives on the benefits to the State from:

- Council action to reduce GOA trawl bycatch
- Board action to consider developing pollock fisheries

# Pollock Workgroup

## Description of GOA Pollock Fisheries

### State Parallel Fishery – current regulations

Opened annually by the commissioner, under emergency order authority, in the state waters of the Prince William Sound, Cook Inlet, Kodiak, Chignik, South Alaska Peninsula, and Bering Sea-Aleutian Islands areas. Corresponds (generally) with the *times*, area, and unless otherwise specified, the gear of the federal season in adjacent federal waters.

Steller sea lion protection measures adopted by 5 AAC 28.087

Federal seabird avoidance regulations adopted by 5 AAC 28.055

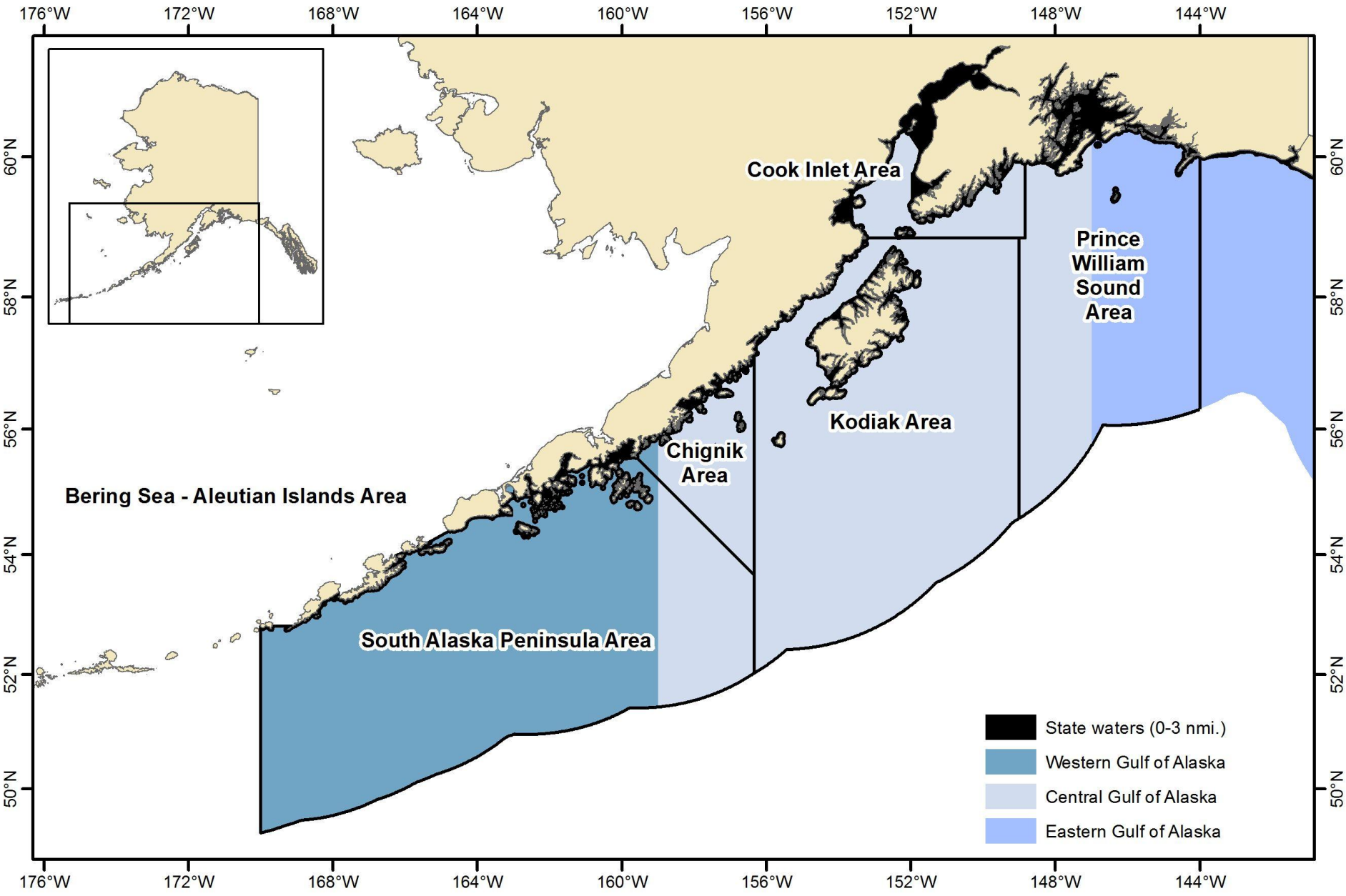
Essential Fish Habitat fishing gear prohibitions adopted by 5 AAC 39.167

Electronic reporting and recordkeeping adopted by 5 AAC 39.130(h)

- Harvest during the parallel season is deducted from the federal TAC
- LLP/FFP not required \*

•State PWS Fishery

•Federal Fishery



# Pollock Workgroup

## Council's Trawl Bycatch Management Program

- Objectives
- Motion update

## Board proposal for GHL pollock fishery

- Objectives
- Test fishery update

# Proposal 44 – State-waters pollock

## Proposal Elements

- GHUs based on Area 620 and 630 pollock ABCs
- Require 100% observer coverage
- Limit vessels to maximum of 58 feet in length (removed by proposer at meeting)
- Legal gear: pelagic trawl, nonpelagic trawl, seine, and jig
- Establish season dates and landing limits

# Current parallel trawl pollock harvest in state waters

- Pollock harvests in the Cook Inlet and Chignik areas are low (0.01 % and 5% of 5-year total CGOA harvest)
- Primary pollock harvest comes from Kodiak and South Alaska Peninsula areas.
- Western Gulf: 53% to 74% of the pollock fishery was harvested in State waters (2009 through 2012)
- Central Gulf: 9% – 37% of pollock fishery was harvested in State waters (2009 – 2012)

# Current parallel harvest in state waters

Area	Waters	Year			
		2009	2010	2011	2012
		Pollock			
CG	Federal	14,799	34,394	50,246	56,254
	State	8,594	10,908	5,341	12,667
CG Total		23,394	45,302	55,587	68,921
CG State % of Total		36.7%	24.1%	9.6%	18.4%
WG	Federal	4,461	11,929	9,894	7,441
	State	9,956	16,492	11,292	20,985
WG Total		14,417	28,421	21,186	28,425
WG State % of Total		69.1%	58.0%	53.3%	73.8%
		Pacific cod			
CG	Federal	5,881	14,688	10,916	12,521
CG Total		5,881	14,688	10,916	12,521
CG State % of Total		0.0%	0.0%	0.0%	0.0%
WG	Federal	1,948	1,652	2,411	5,685
	State	50	191	103	646
WG Total		1,998	1,844	2,514	6,331
WG State % of Total		2.5%	10.4%	4.1%	10.2%

# Coordination between State and Federal Fisheries on GOA trawl bycatch

- Discussed Council objectives for group to consider
  - Maintain ability for current participants to continue to fish in state and federal waters during pollock fishery.
  - Maintain 100% observer coverage and new bycatch restrictions for federally permitted vessels.
  - Not exacerbate a race for fish in state waters that would be inconsistent with bycatch minimization objectives. (Want to avoid allowing persons that hold federal quota to circumvent the intent of the federal quota limits by fishing in state waters prior to harvesting their cooperative quota allocation.)
  - Catch accounting such that the amount to be deducted from the available pollock ABC would be known prior to issuing federal cooperative quota amounts at the beginning of each year.
- Timing issues