

# **Proposal 155** Unit 15C Intensive Management

---

## **Renew the Unit 15C Intensive Management program**

**Recommendation: Support**

### **Department Proposal**

**Anchorage AC  
Homer AC**

**13-0  
0-10**

**Central Peninsula AC 10-0**

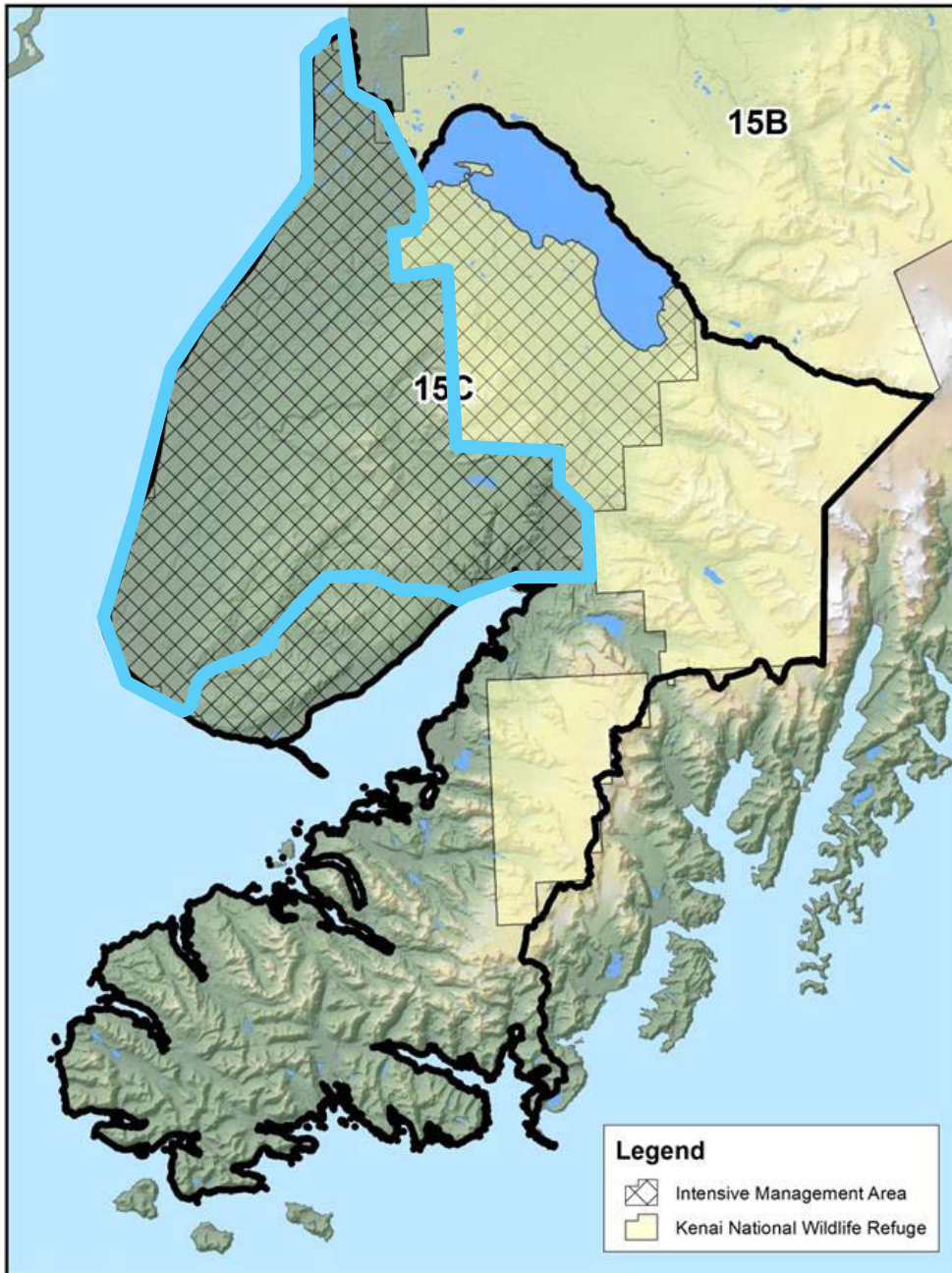
# **Proposal 155**    Unit 15C Intensive Management

---

## **Background**

- **Unit 15C Intensive Management plan was originally adopted in 2012**
  - **Current plan expires on June 30, 2017**
- **Under the BOG three-year meeting cycle, the next Southcentral meeting is in 2019**
- **Operational plan for Intensive Management of moose for RY 2017-2020 being revised**

# Unit 15C



- Most of the moose population resides within the hatched area
  - 1,171 miles<sup>2</sup>
  - >90% harvest from this area
- Control area approximately 1/3 of Unit 15C: 856 miles<sup>2</sup>

# Proposal 155

## Unit 15C Intensive Management

---

**IM Population Objective**                      **2,500–3,500 moose**

<b>Year</b>	<b>Population Estimate</b>	<b>Bull:Cow</b>	<b>Calf:Cow</b>
<b>2010</b>	<b>2,919 (GSPE)</b>	<b>9:100</b>	<b>19:100</b>
<b>2013</b>	<b>3,204 (GSPE)</b>	<b>19:100</b>	<b>23:100</b>

# Proposal 155

## Unit 15C Intensive Management

### IM Harvest Objective 200–350 moose

Year	Harvest
2010	240
2011	58
2012	48
2013	116
2014	164
2015	179
2016	211

- Harvest includes general season and permit hunts
- 2010 general season: S/F,  $\geq 50$ -inch or  $\geq 3$  brow tines
- General season harvest restricted in 2011:  $\geq 50$ " or  $\geq 4$  brow tines, no spikes or forks.
- 2013 general season: spike,  $\geq 50$ " or  $\geq 4$  brow tines (no forks)

# Proposal 155 Unit 15C Intensive Management

---

In 2012, moose research in Unit 15C began looking at multiple factors

- Mean annual survival of adult cows 90%
- Mean body fat of adult cows in fall 15%
- Parturition rate 77%
- Average twinning rate 36%
- Annual calf survival (2013—2016) 30%

# Proposal 155 Unit 15C Intensive Management

---

- **Wolf survey**
- **Browse survey**
- **Moose abundance**
- **Moose harvest evaluation**

# **Proposal 155** Unit 15C Intensive Management

---

## **Renew the Unit 15C Intensive Management program**

**Recommendation: Support**

### **Department Proposal**

**Anchorage AC**  
**Homer AC**

**13-0**  
**0-10**

**Central Peninsula AC**

**10-0**



**Reauthorizes the Mulchatna Caribou  
Herd Intensive Management Plan**

5 AAC 92.111 (c)

**Department Recommendation: Adopt**

**Department Proposal**

---

*No Advisory Committee Votes*

# Intensive Management Objectives

## Caribou

Population: 30,000–80,000

Harvest: 2,400–8,000

Fall bull-to-cow: 30 bulls:100 cows

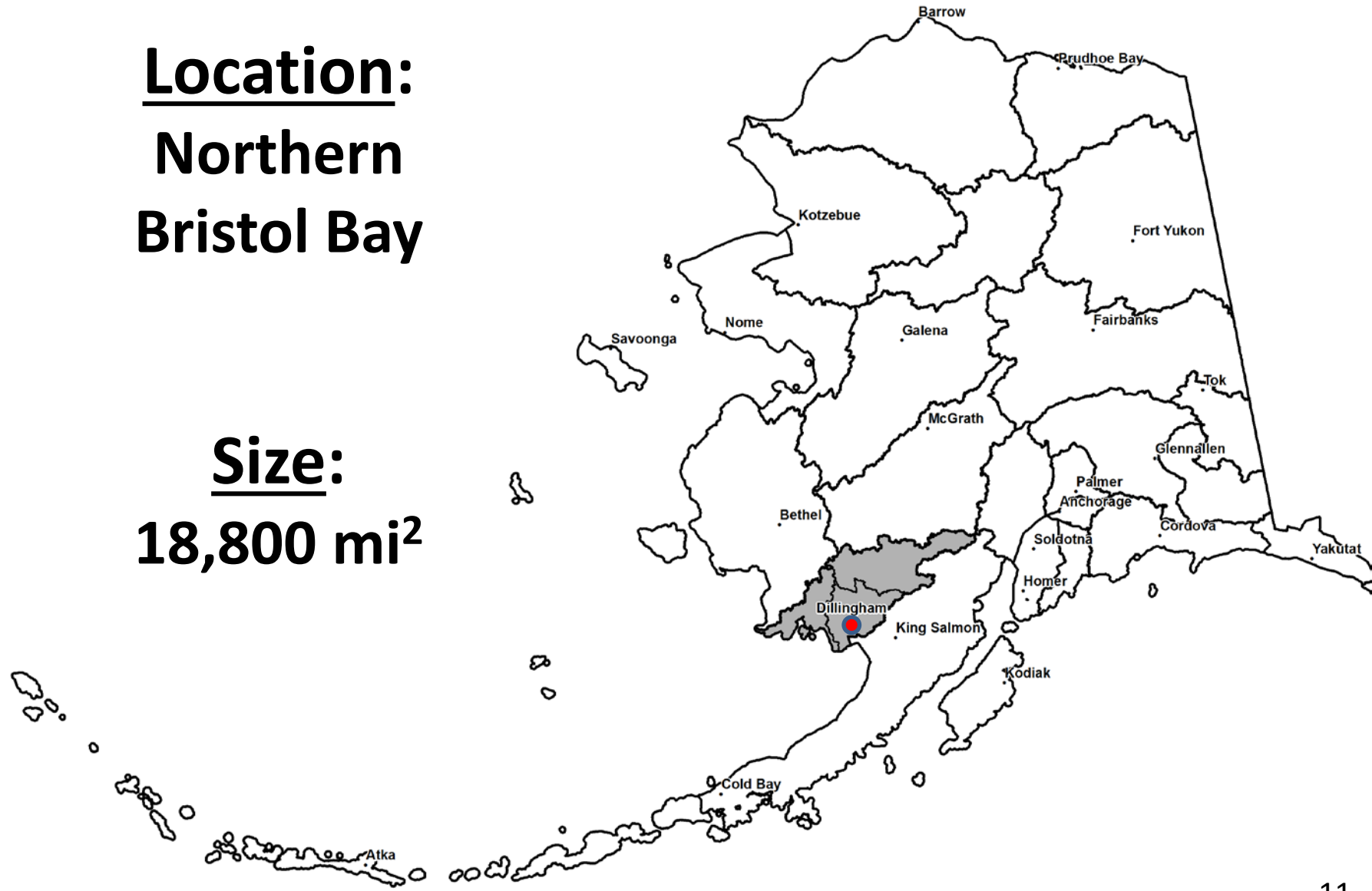
Fall calf-to-cow: >30 calves:100 cows

## Wolves

To annually reduce the number of wolves to a level that results in increased calf survival in caribou calving areas

**Location:**  
**Northern  
Bristol Bay**

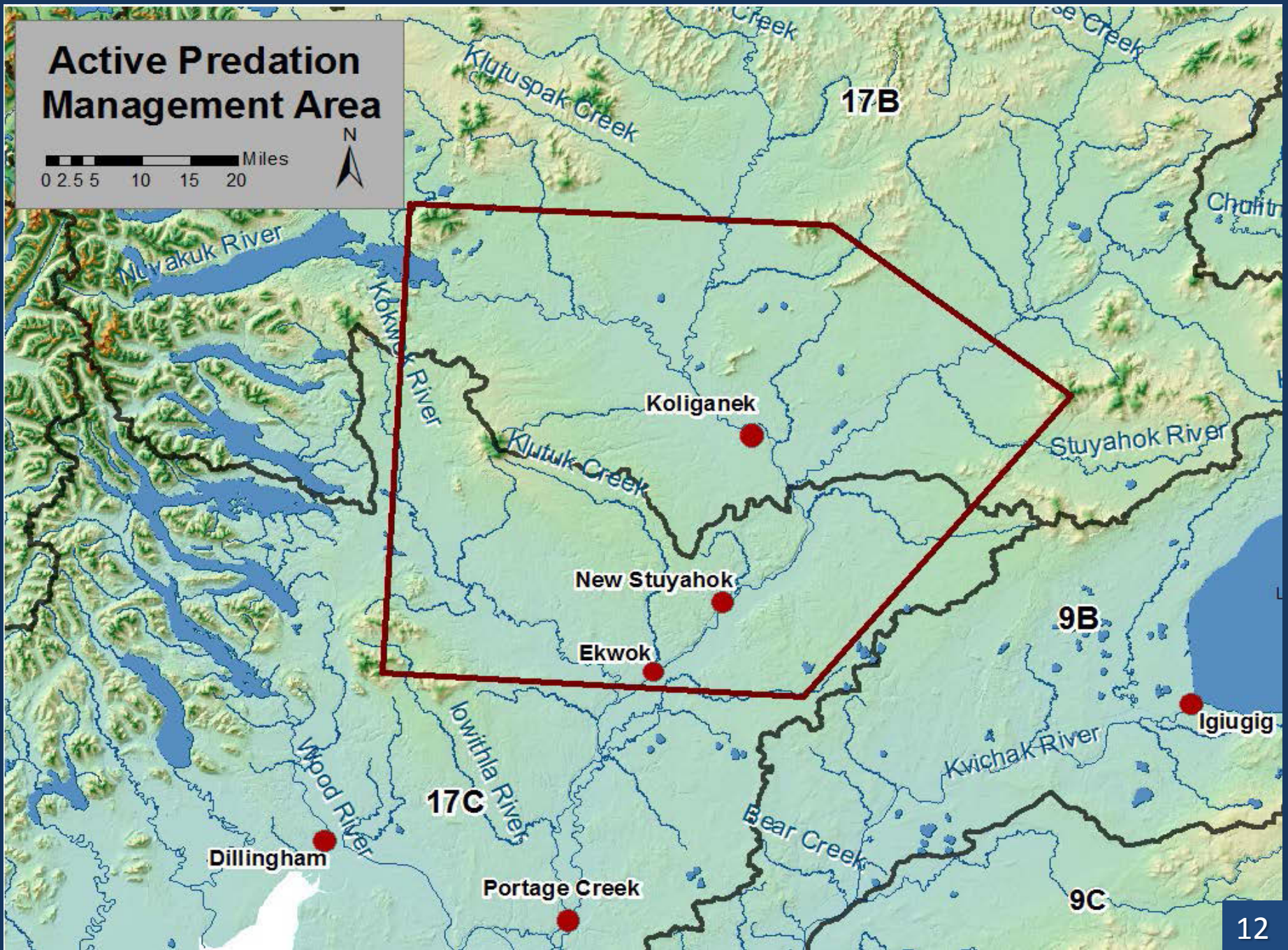
**Size:**  
**18,800 mi<sup>2</sup>**





# Active Predation Management Area

0 2.5 5 10 15 20 Miles

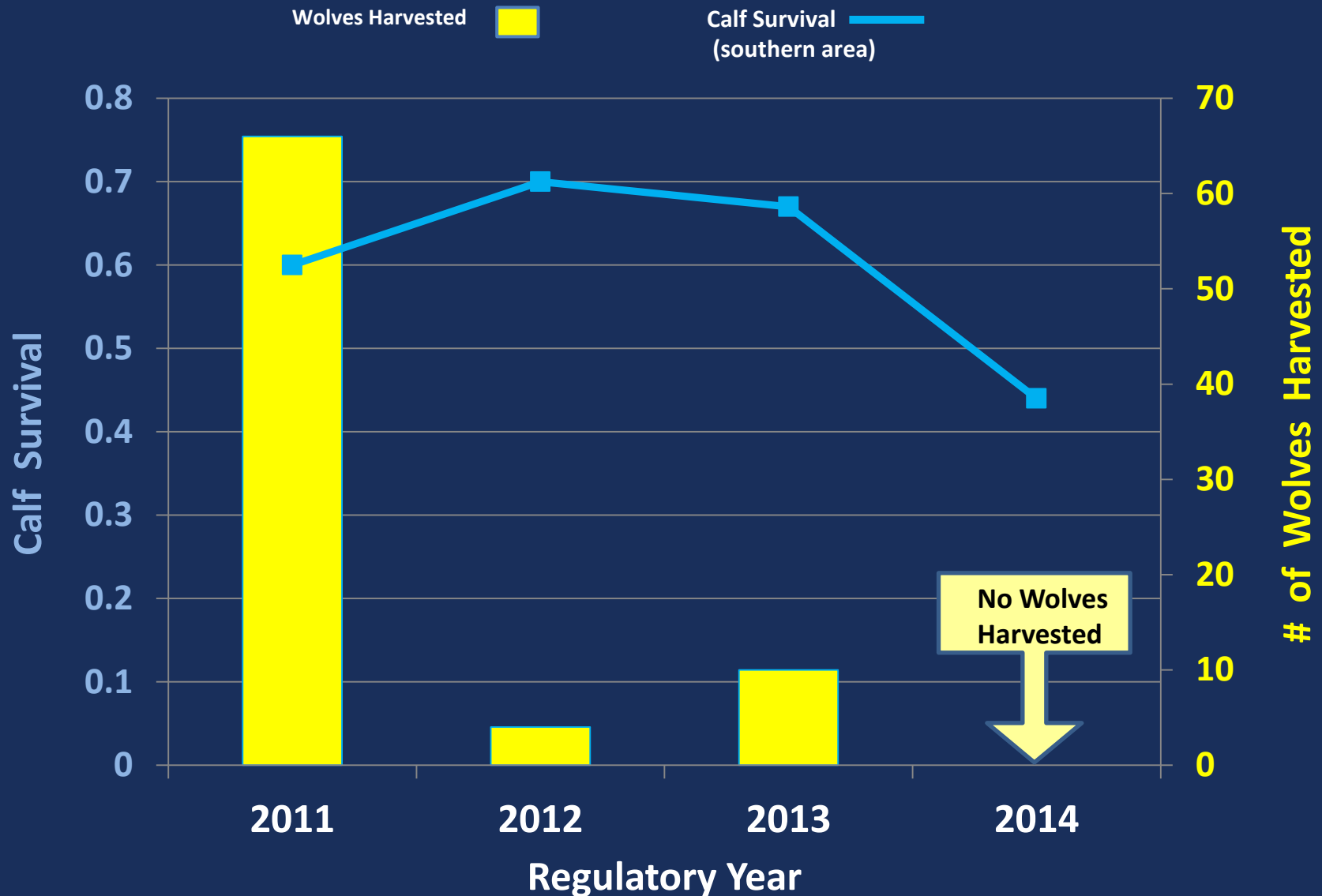


# IM Program Participation

## Wolf Removal from 17B&C Wolf Control Area

Period	RY	SDA Permitted Pilots/Gunners	SDA Pilot Days	SDA Harvest	Non-SDA Harvest in Control Area	Total Harvest
Year 1	2011	33/25	$\geq 6$	11	55	66
Year 2	2012	31/19	1	0	4	4
Year 3	2013	28/20	1	0	10	10
Year 4	2014	34/28	0	0	0	0
Year 5	2015	26/12	0	0	21	21

# Calf Survival & Wolf Removal



# Criteria for Evaluating Progress

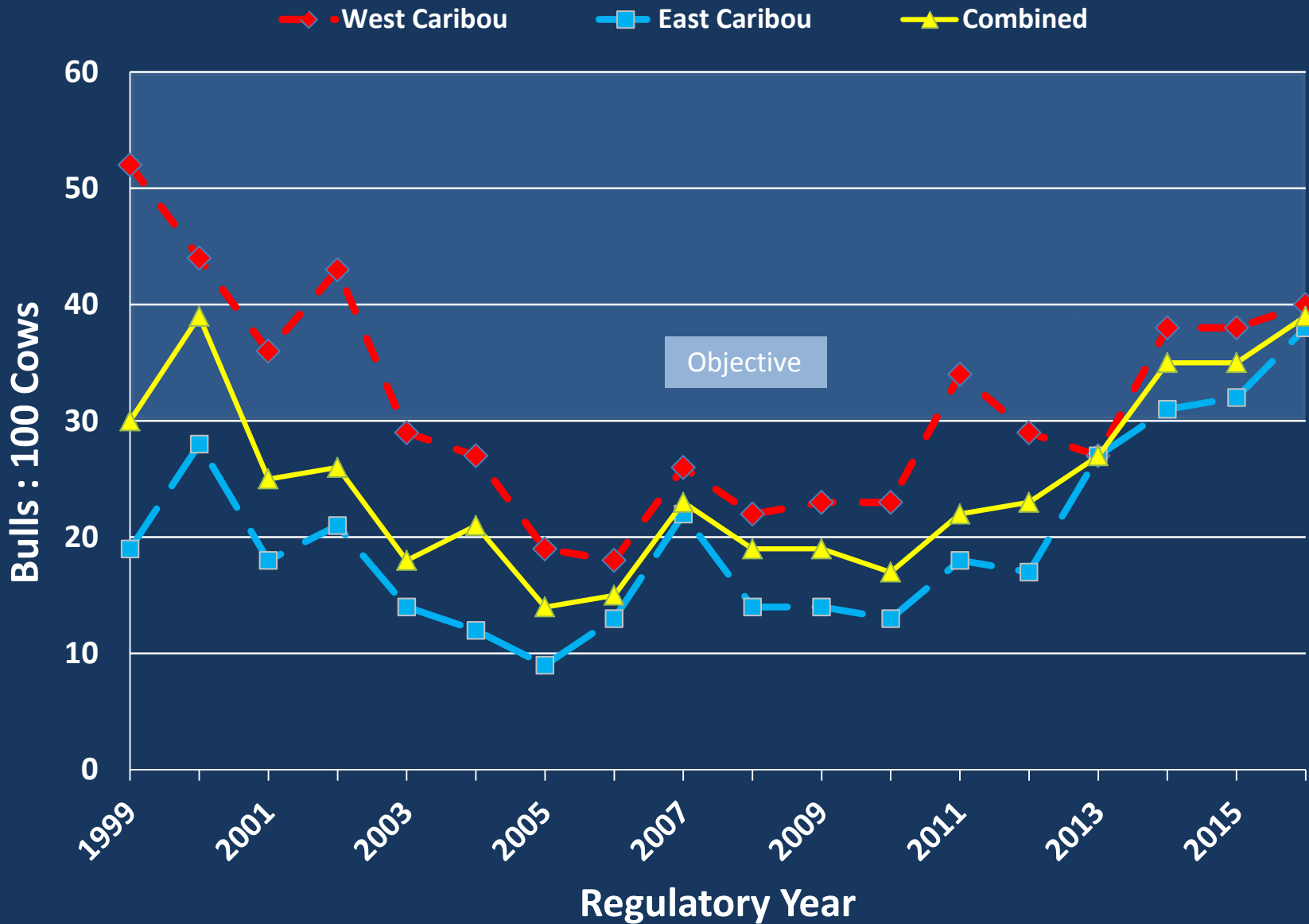
- **Fall bull-to-cow ratio**
- **Fall calf-to-cow ratio**
- **Caribou abundance: 30,000-80,000**

## Criteria for Success

- **Fall bull-to-cow ratio: 35 bulls:100 cows**
- **Fall calf-to-cow ratio: >30 calves:100 cows**
- **Growth of population: 5% annually**
- **Harvest objectives are met**

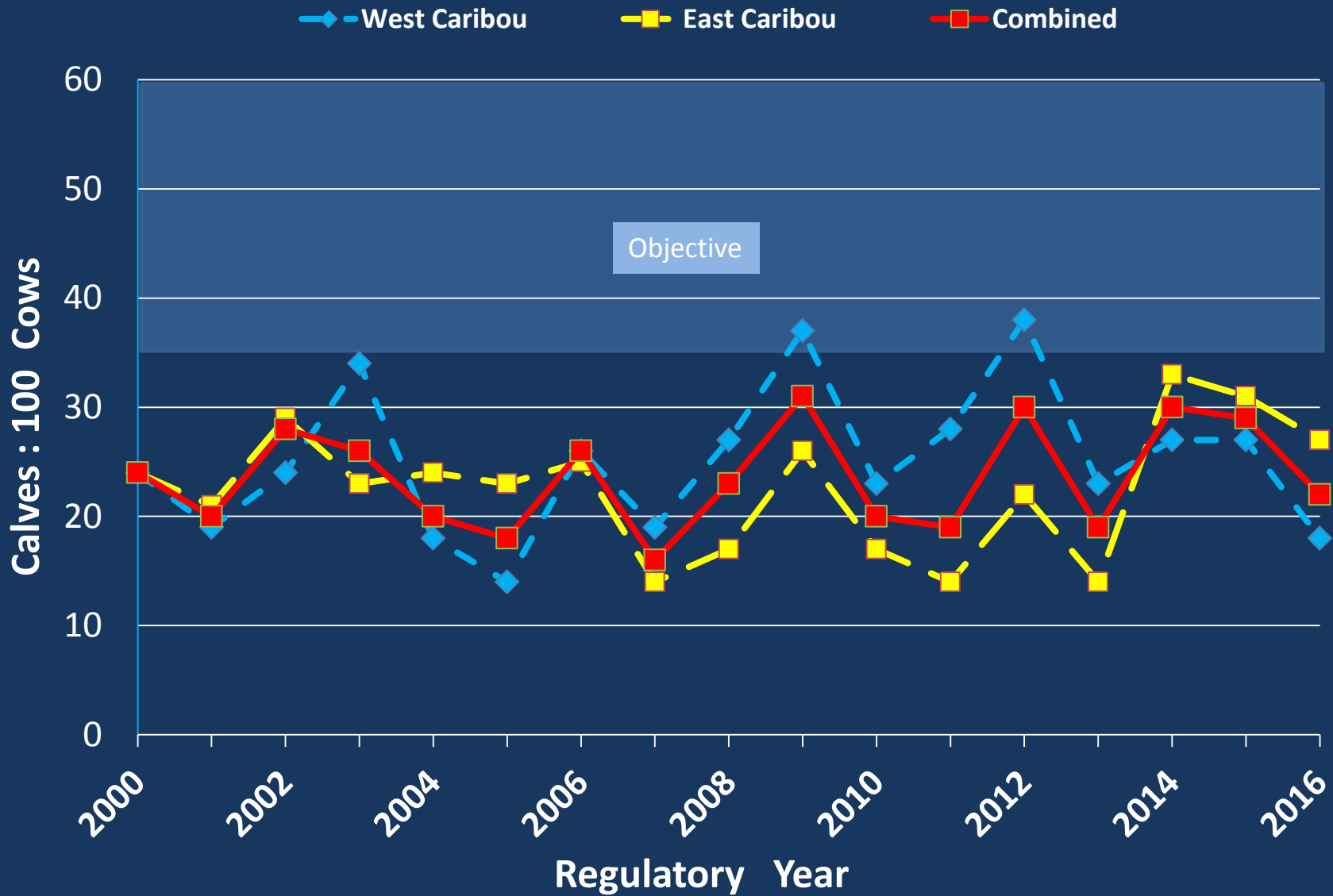


# Fall Bull:Cow Ratios

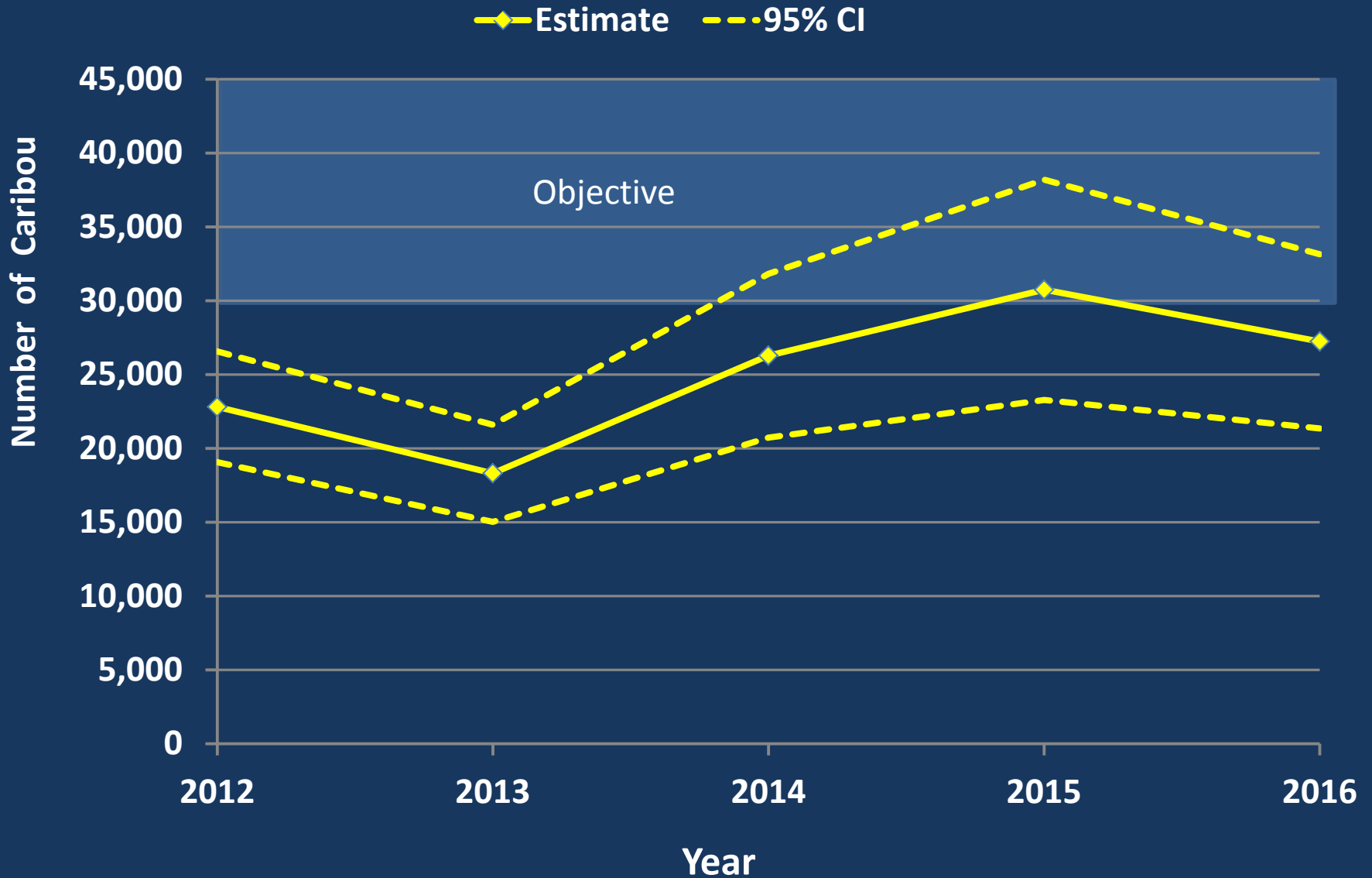




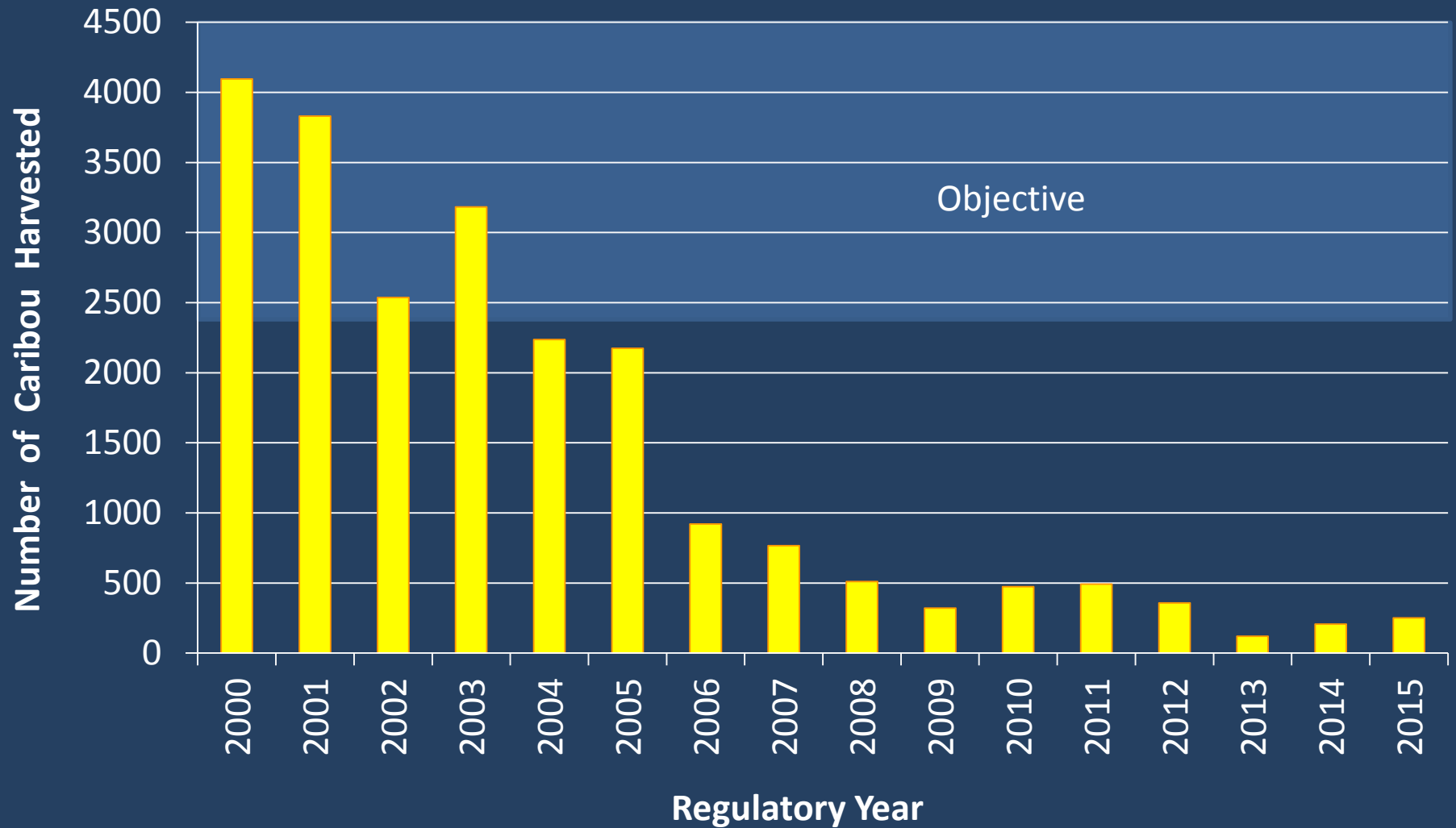
# Fall Calf: Cow Ratios



# Population Abundance Estimate



# MCH Annual Harvest



# Summary/Conclusion

- Keeping this program active is important toward achieving IM objectives
- Snow conditions will dictate harvest of wolves, but one good year can make a difference
- Bull:100 cow ratios are meeting objectives
- Calf:100 cow ratios are close to objectives
- Abundance is approaching population objectives
- Harvest is currently below objectives

**Reauthorizes the Mulchatna Caribou  
Herd Intensive Management Plan**

5 AAC 92.111 (c)

**Department Recommendation: Adopt**

**Department Proposal**

---

*No Advisory Committee Votes*

# **Proposal 158**

## **Public Proposal**

### **Effect of Proposal :**

**Remove the West Nile Virus testing requirements from Falconry Manual No. 9 (adopted by reference)**

### **Recommendation :**

**Defer to next Statewide meeting (2017/2018)**

# Background

- ▣ 2013 addendum issued to remove the WNV testing requirement
- ▣ Environmental conditions make it highly unlikely the disease could be introduced by imported raptors
- ▣ WNV lab testing costs \$25-30.
- ▣ ADF&G plans to revise current falconry manual with input from the falconer's association before the next statewide BOG

# Proposal 158

## Public Proposal

### Effect of Proposal :

Remove the West Nile Virus testing requirements from Falconry Manual No. 9 (adopted by reference)

### Recommendation :

Defer to next Statewide meeting (2017/2018)