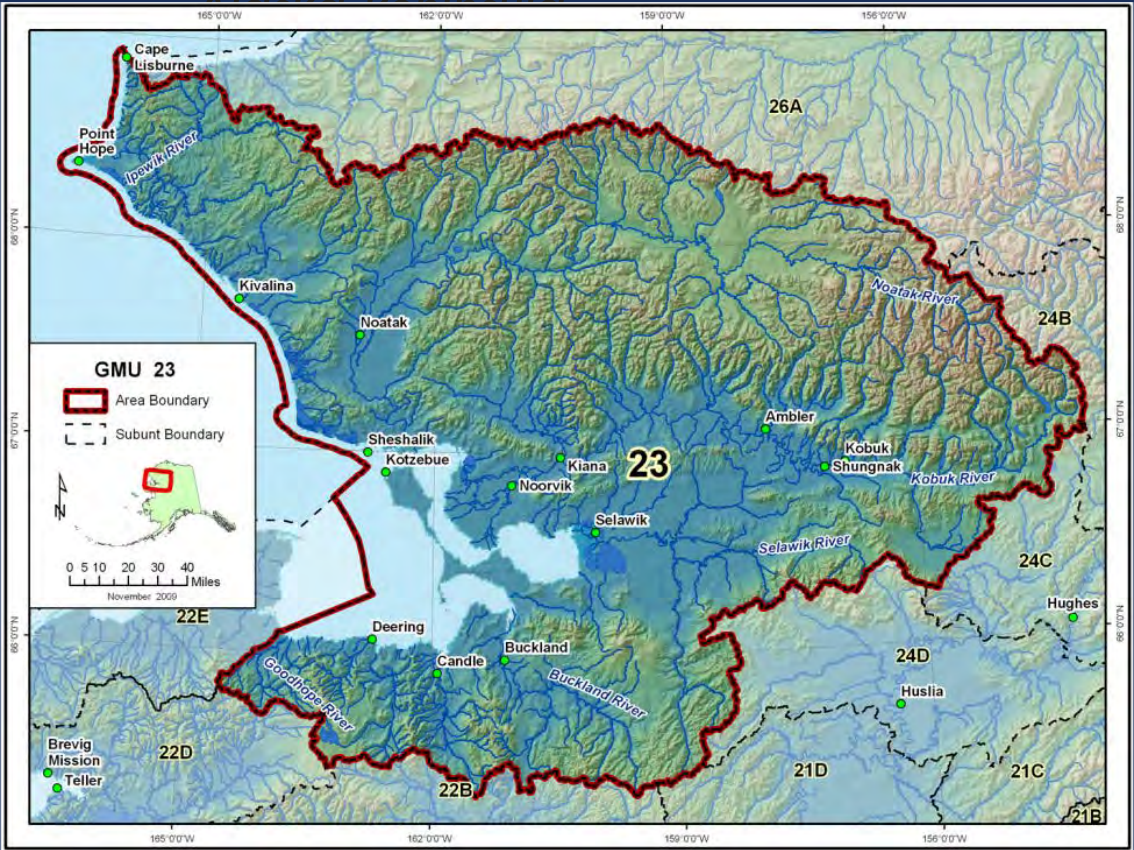


Game Management Unit 23



Kotzebue Sound-Chukchi Sea-Arctic Ocean

Game Management Unit 23



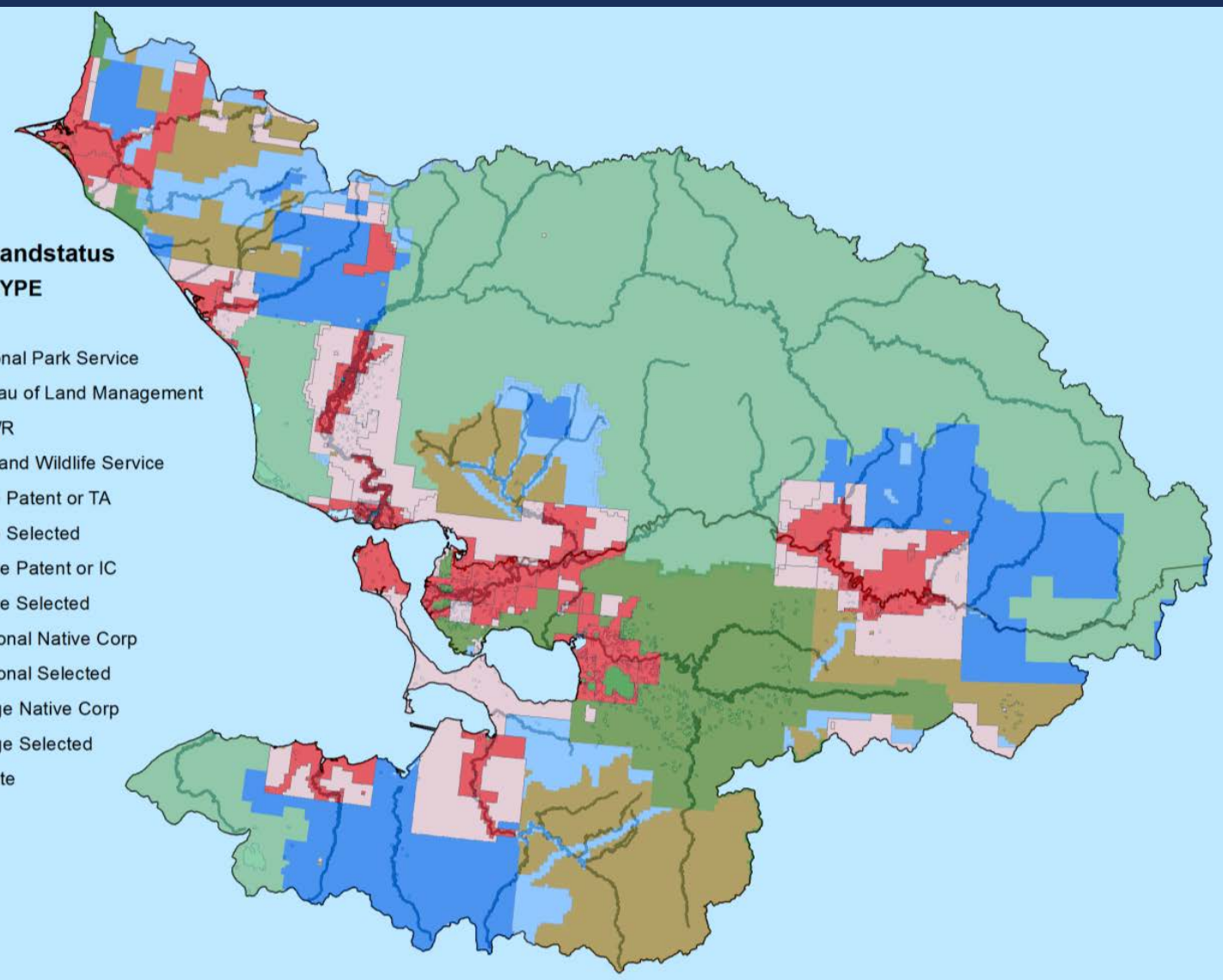
Statistics

Area: 43,000 mi²
Population: 7,700
Villages: 11

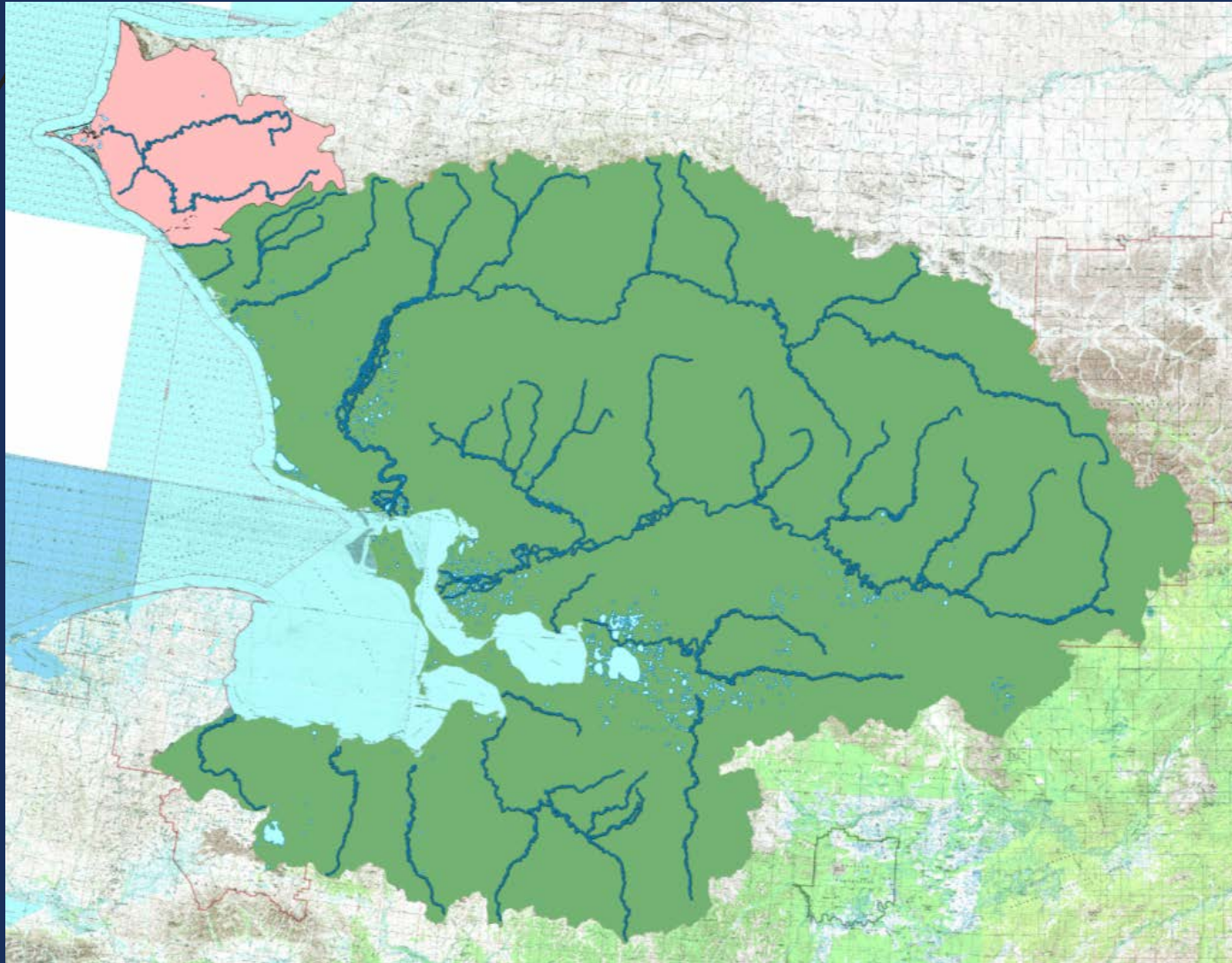
Game Management Unit 23

Unit 23 Landstatus STATUS TYPE

- National Park Service
- Bureau of Land Management
- SNWR
- Fish and Wildlife Service
- State Patent or TA
- State Selected
- Native Patent or IC
- Native Selected
- Regional Native Corp
- Regional Selected
- Village Native Corp
- Village Selected
- Private



Game Management Unit 23



Game Management Unit 23



Game Management Unit 23



User Conflicts & CUA

Unit 23 residents

Non-local Residents

Non-Residents

International

Activities:

Hunting/Fishing

Aircraft Access

Float trips

Back packing

Wildlife viewing/ Sightseeing

Proposals 44-45

Moose



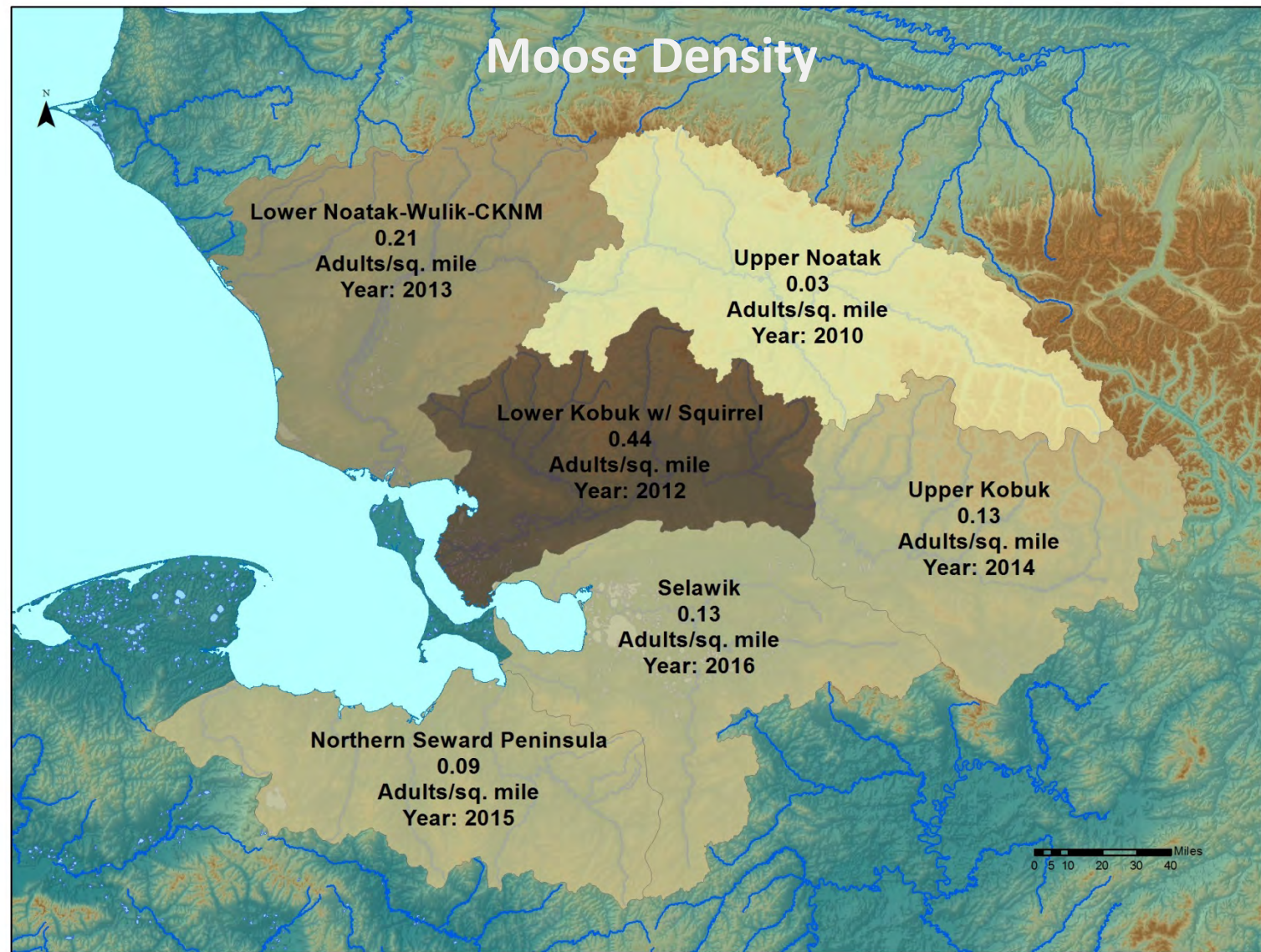
Population : 7,500
Status: declining
Harvest: 274 bulls per year (150 reported)

Proposal 36

Moose

Harvest

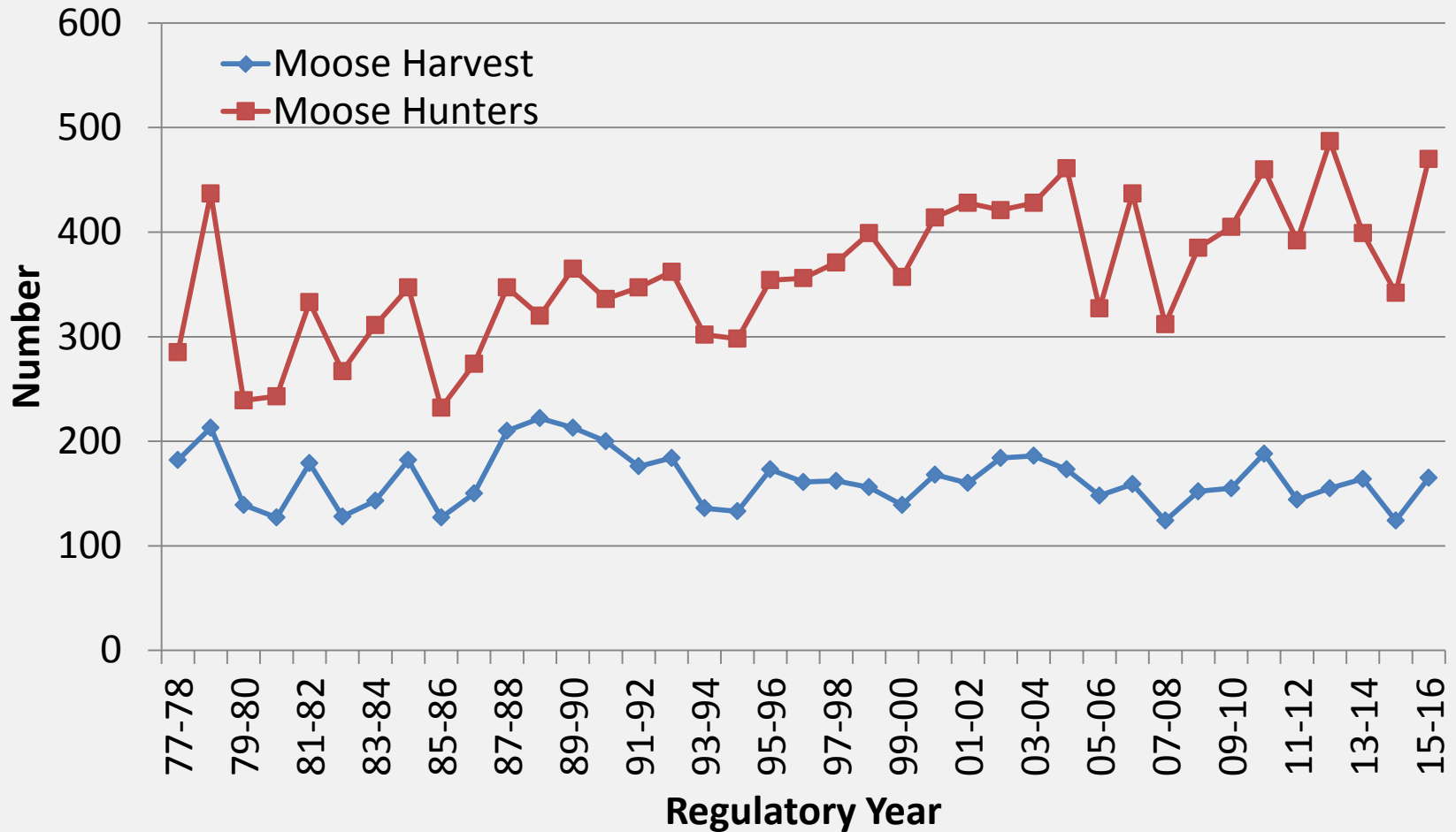
- Current Regulations
 - General Moose Hunt
 - RM880
 - DM871-877
- Harvest Objective 210-920 moose
- ANS 325-400 moose





Moose

Participation and Harvest Information



Brown Bear

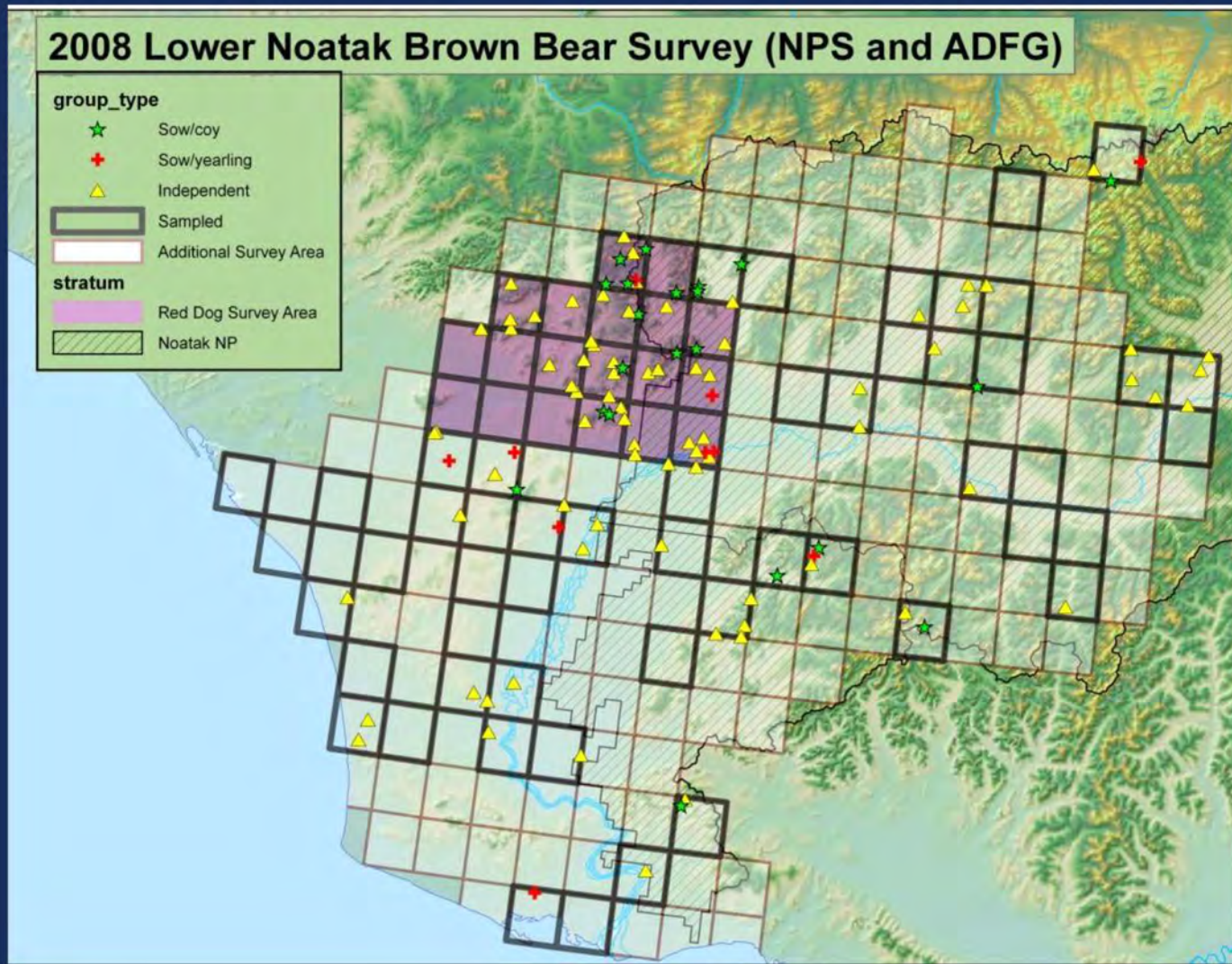


Population : unknown (1673 – 5822) Red Dog Extrapolated

Status: stable / increasing

Harvest: 50 per year

Brown Bear



Brown Bear

1987 Red Dog Mine area mark-recapture brown bear census

- 1 Bear every 26 mi²

2008 Red Dog Mine area paired sample brown bear census

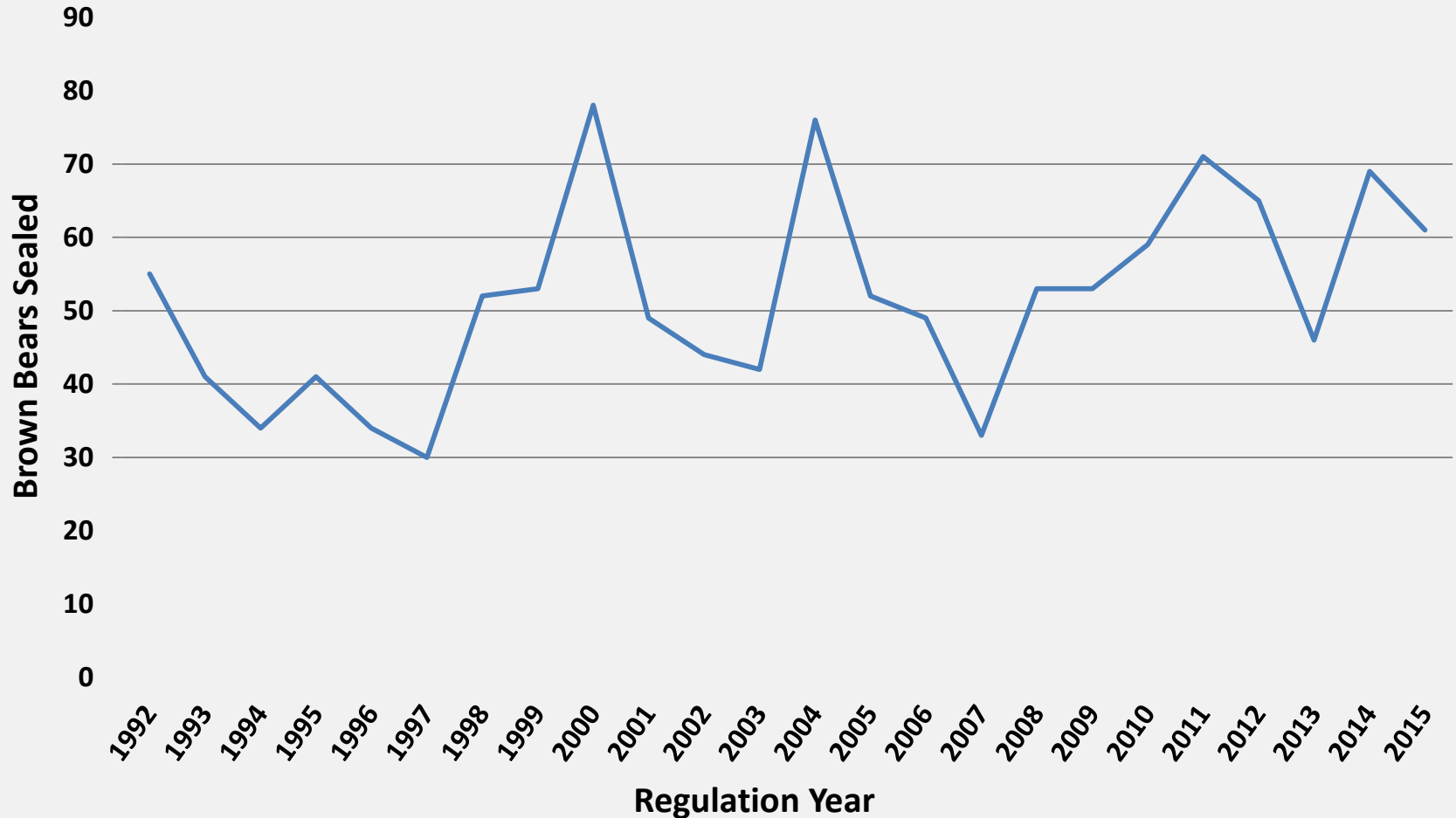
- 3.4 Bears every 26 mi² (Preliminary results using 1987 sightability correction factor)

2016 Lower Noatak area paired sample brown bear census

- Results pending

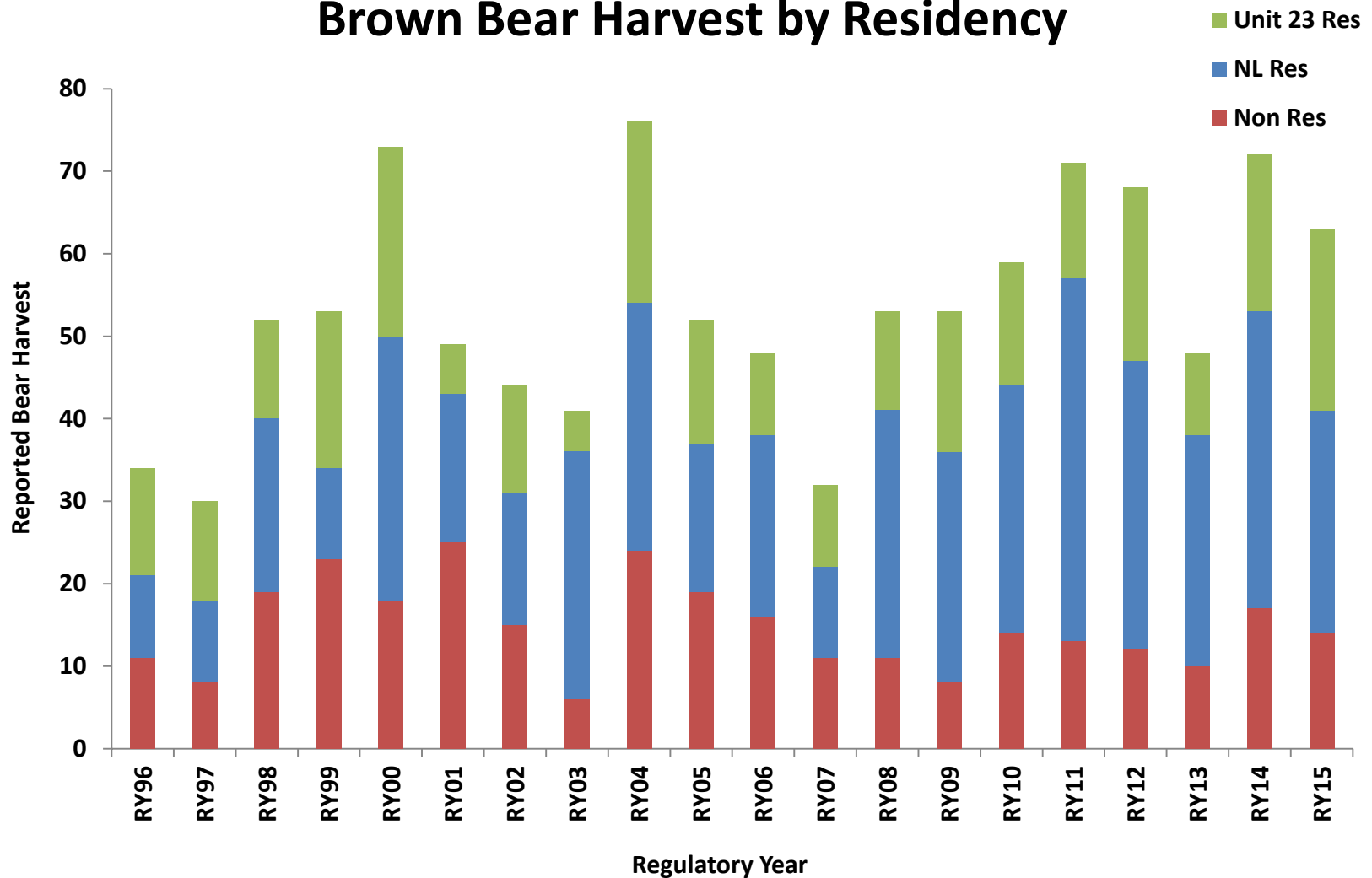
Brown Bear

Brown Bear Sealed in Unit 23



Brown Bear

Brown Bear Harvest by Residency



Wolf



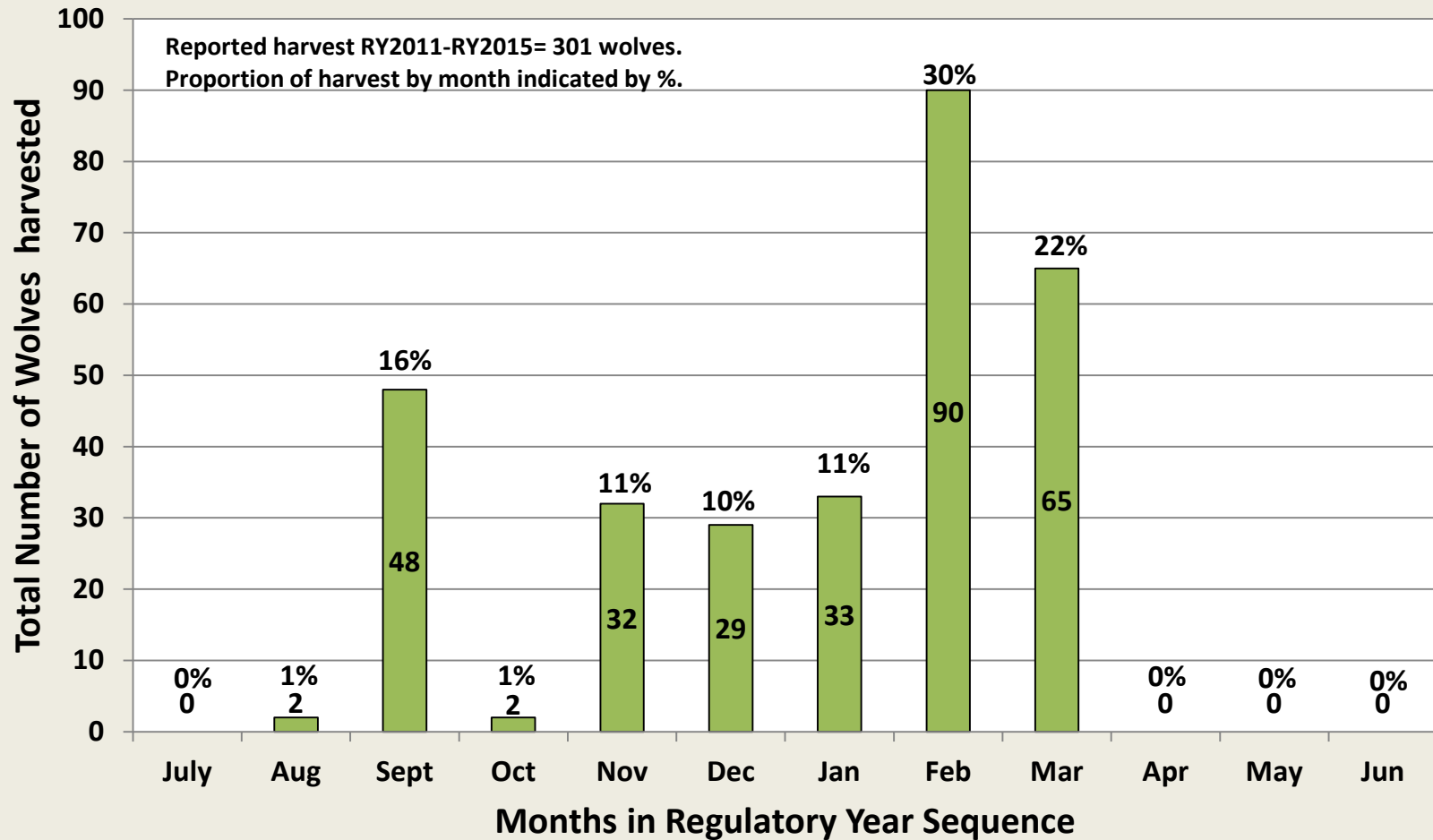
Density: unknown

Status: unknown

Harvest: 59 per year avg

Wolf

Unit 23 Cumulative Reported Wolf Harvest Distribution by Month RY 2011-2015



Muskox

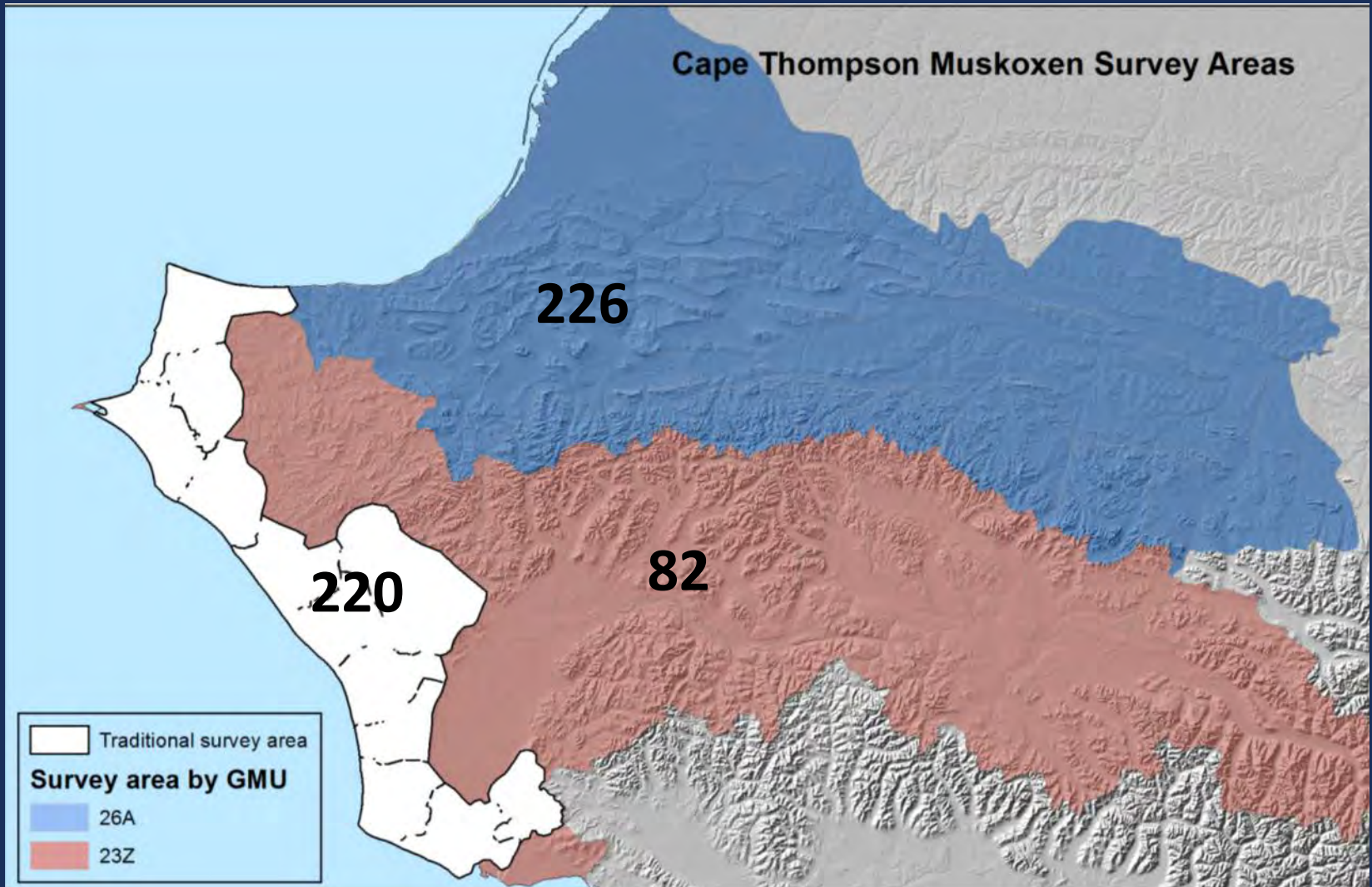


Population: 556 (Cape Thompson)

Status: stable

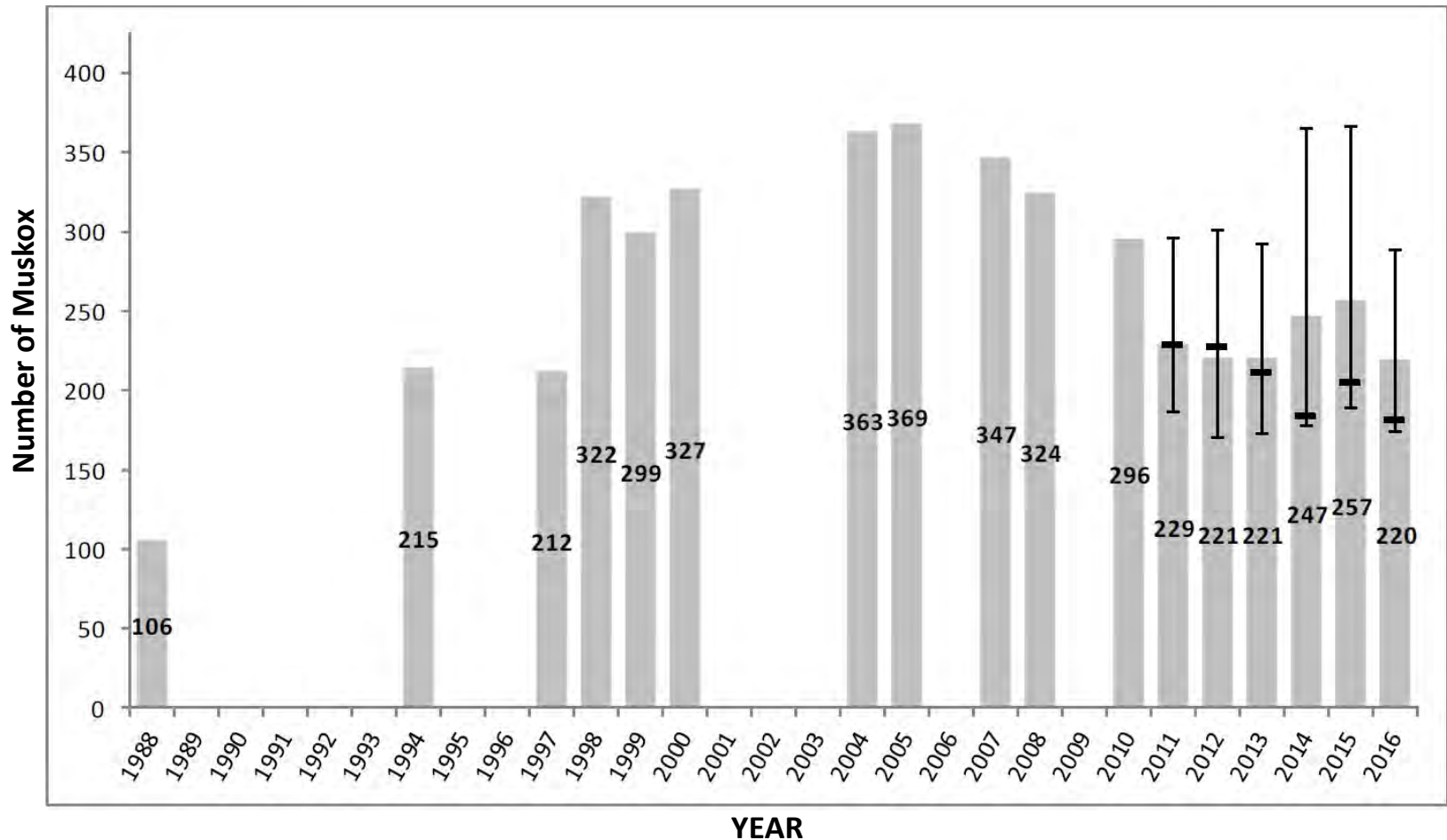
Harvest: 6 per year

Muskox



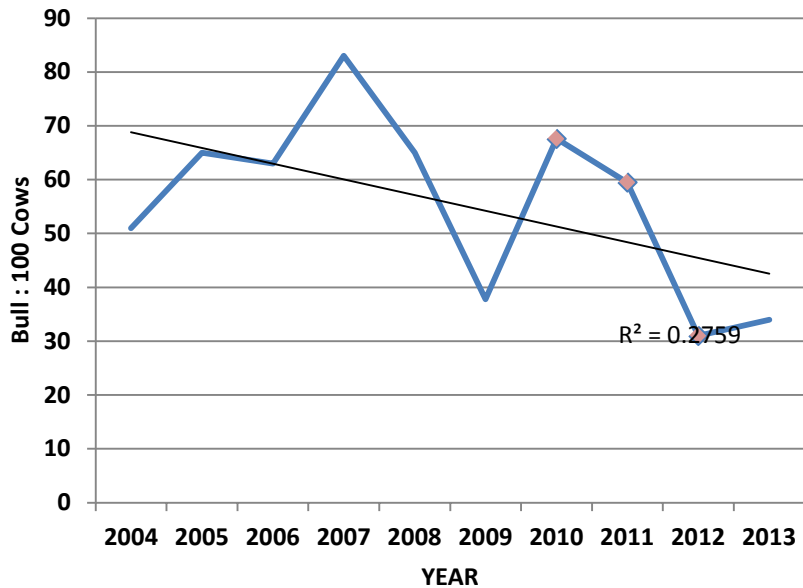
Muskox

Unit 23 Cape Thompson Minimum Count Results

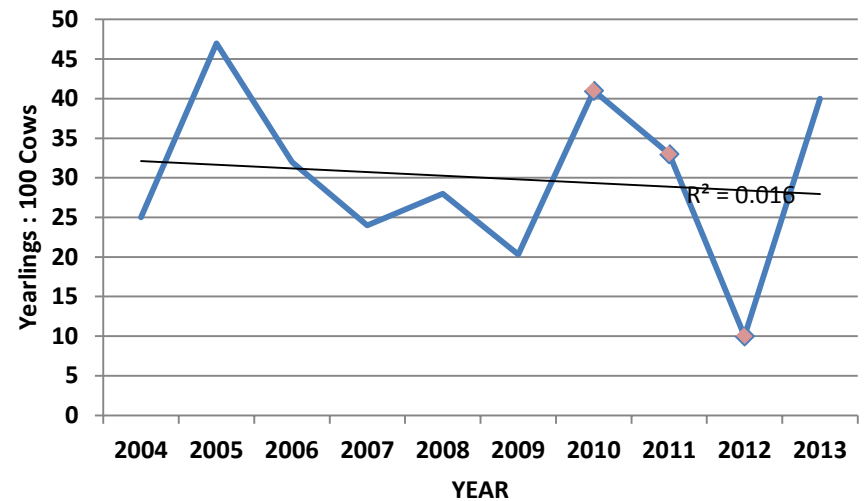


Muskox

Bull:100 Cows



Yearlings:100 Cows



Dall's Sheep



Density: 196 (Baird Mountains)

Status: declining

Harvest: no open season

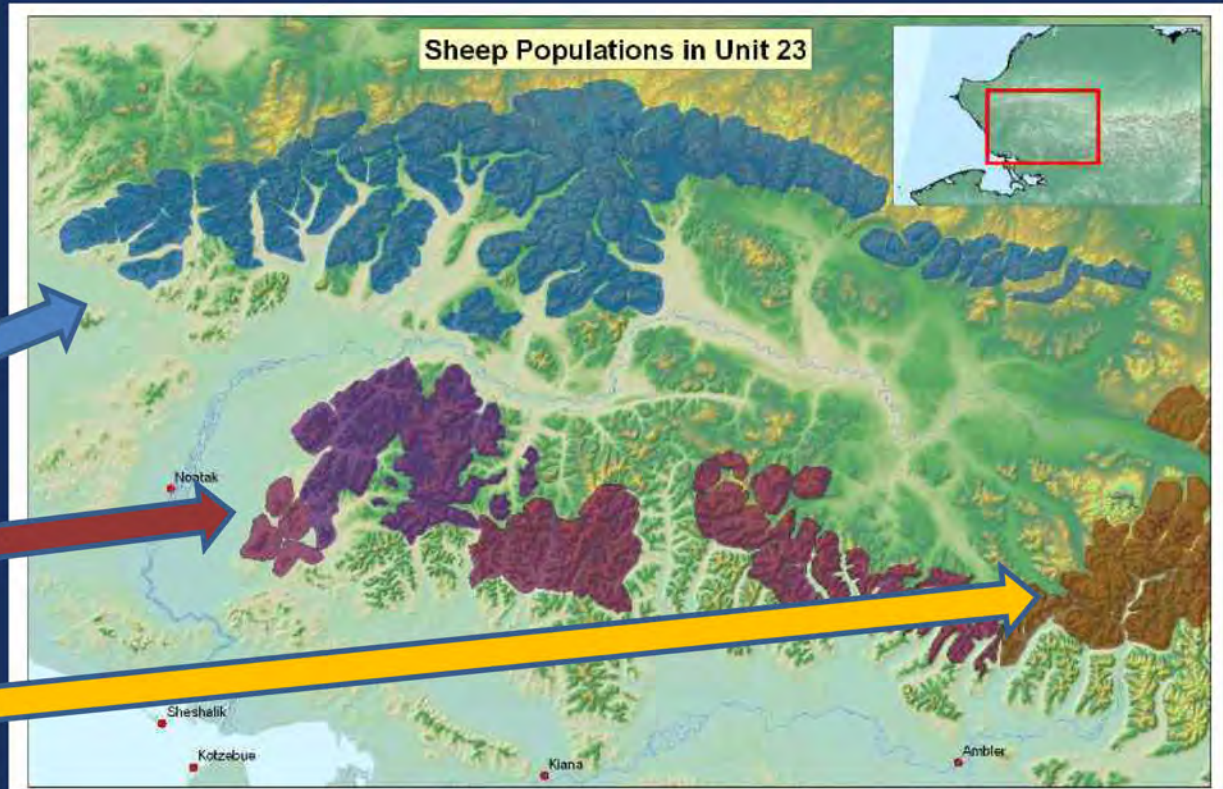
Dall's Sheep

Population

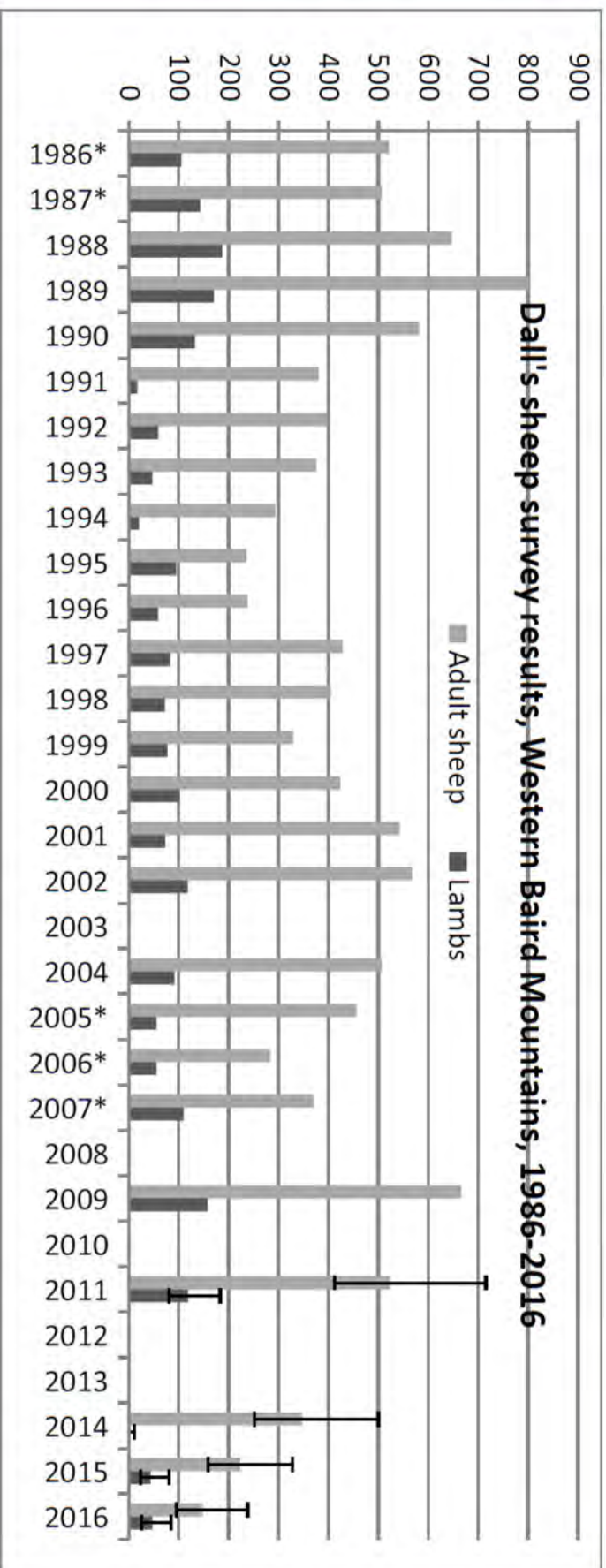
- Population Estimates

Harvest

- De Long Mountains
- Baird Mountains
- Schwatka Mountains



Dall's Sheep



Furbearer



Average Annual Harvest (2010 – 2014)

- 7 Beaver
- 103 Lynx
- 7 Otter
- 31 Wolverine

Game Management Unit 23



Kotzebue Sound-Chukchi Sea-Arctic Ocean