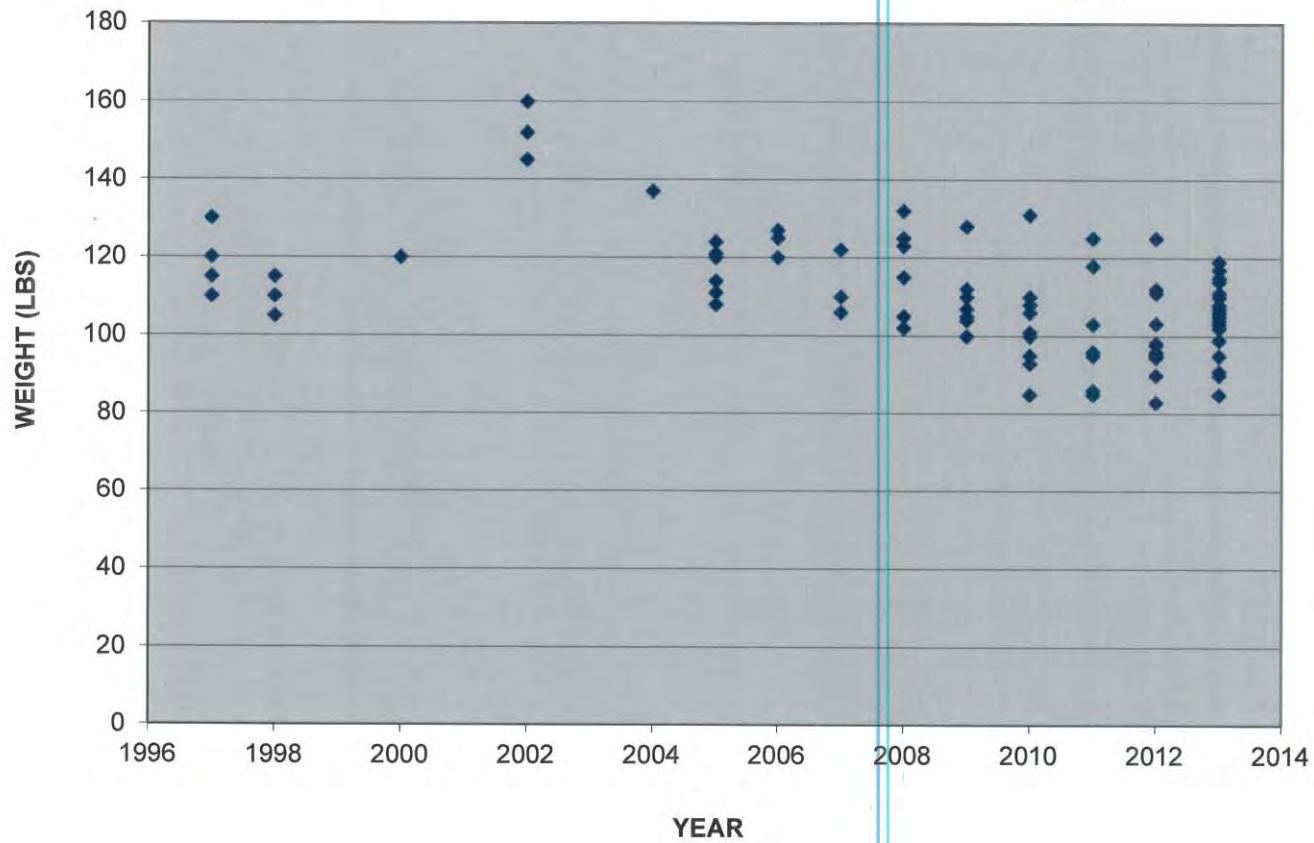
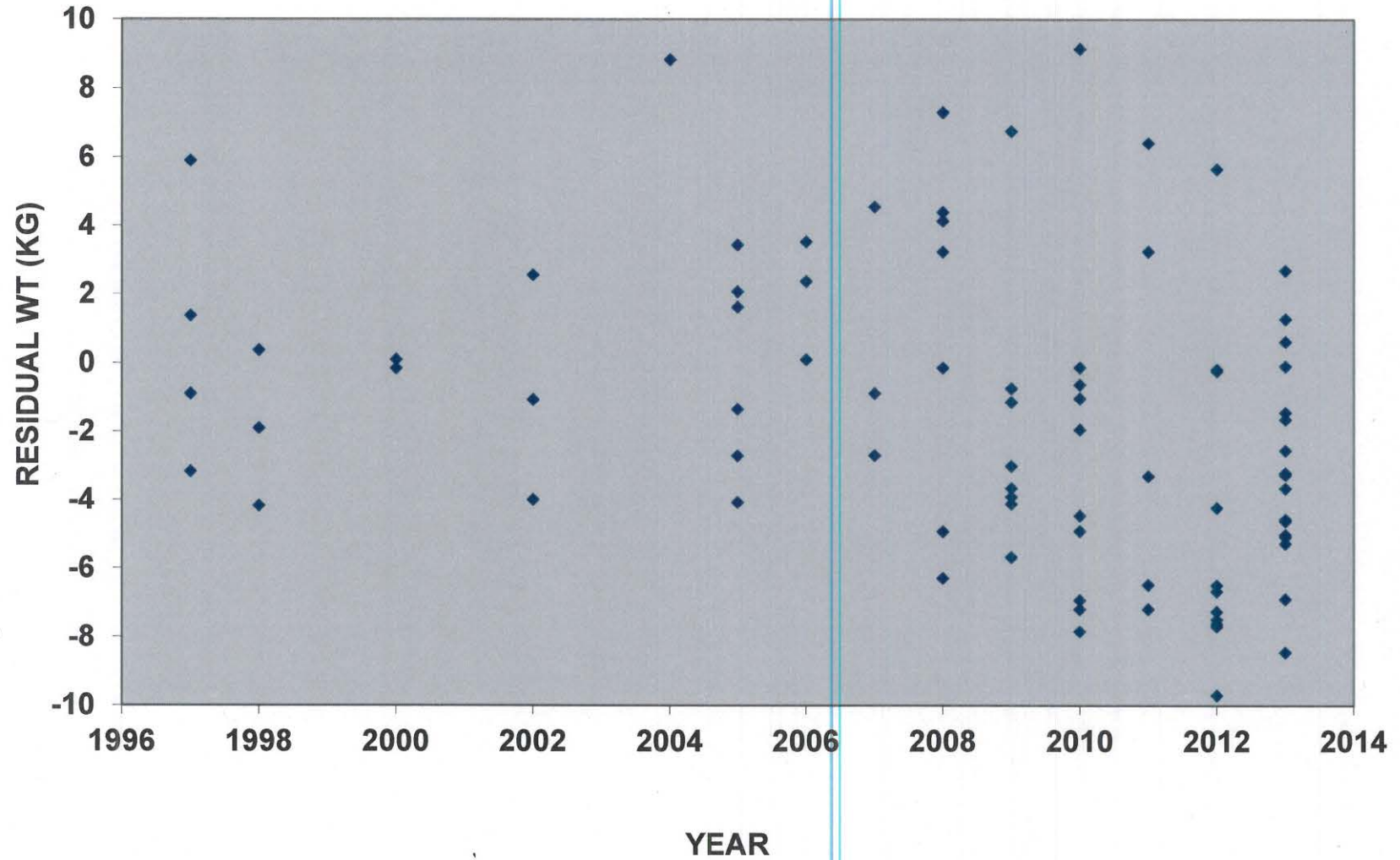


Yearling Capture Weight Trend (Uncorrected for Julian Day)



Department of W. Wildlife
Conservation
Reference RC2 - Supplementary
Slides
RC28

YEARLING CAPTURE WEIGHT TREND



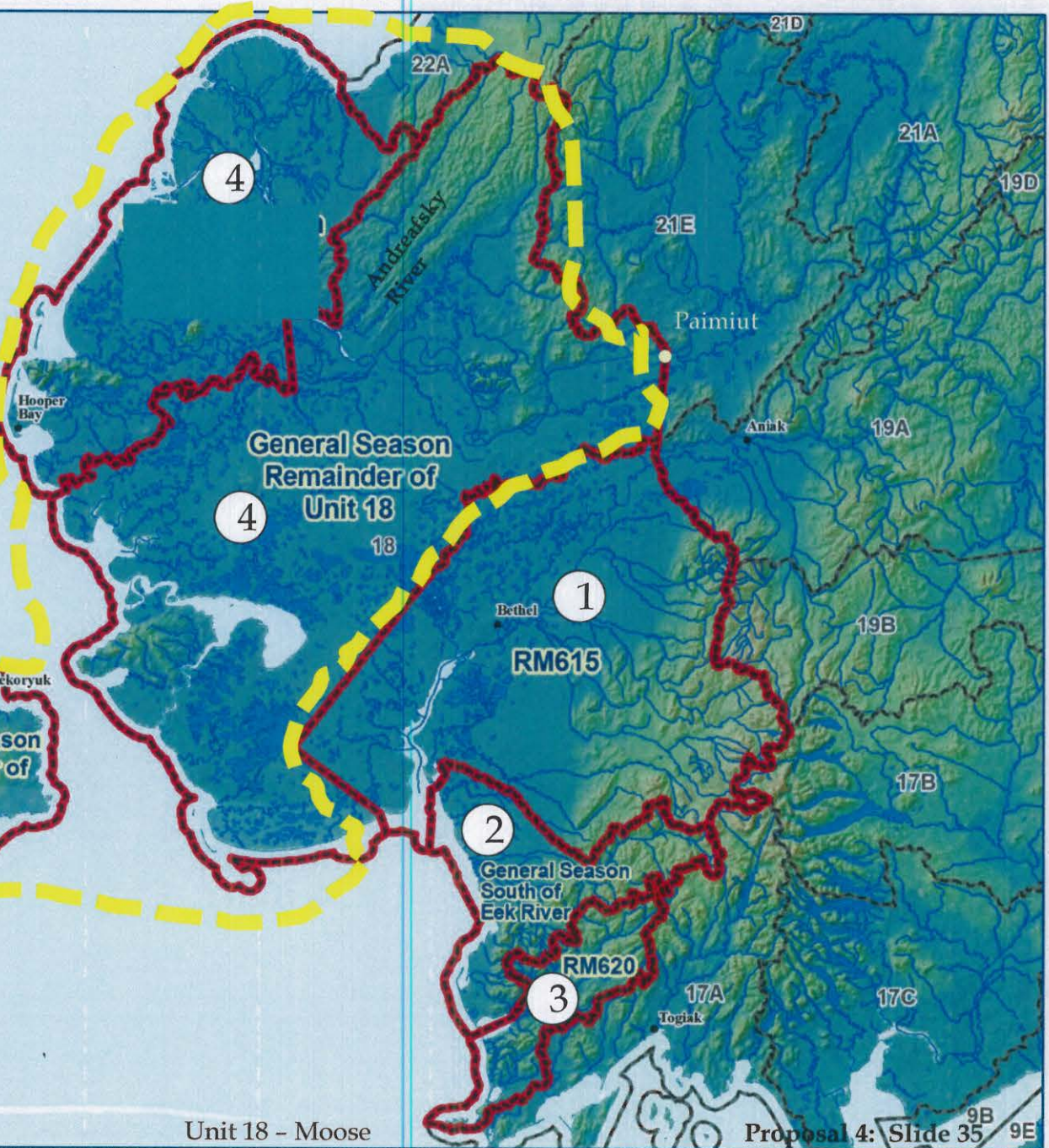
Unit 18 Moose Hunt Area



0 15 30 60
Miles

- ① Kuskokwim drainage
- ② South of Eek drainage
- ③ Goodnews drainage
- ~~Lower Yukon Area~~
- ④ Remainder

Mekoryuk
General Season
Remainder of
Unit 18



Unit 18 - Moose

Proposal 4: Slide 35 ^{9B} _{9E}

Remainder of Unit 18

RESIDENT HUNTERS:

2 moose; of which
only 1 may be
an antlered bull;
a person may not
take a calf or
a cow accompanied
by a calf; or

Aug. 1 - Sept. 30

2 antlerless moose; or

Oct. 1 - Nov. 30.

2 moose

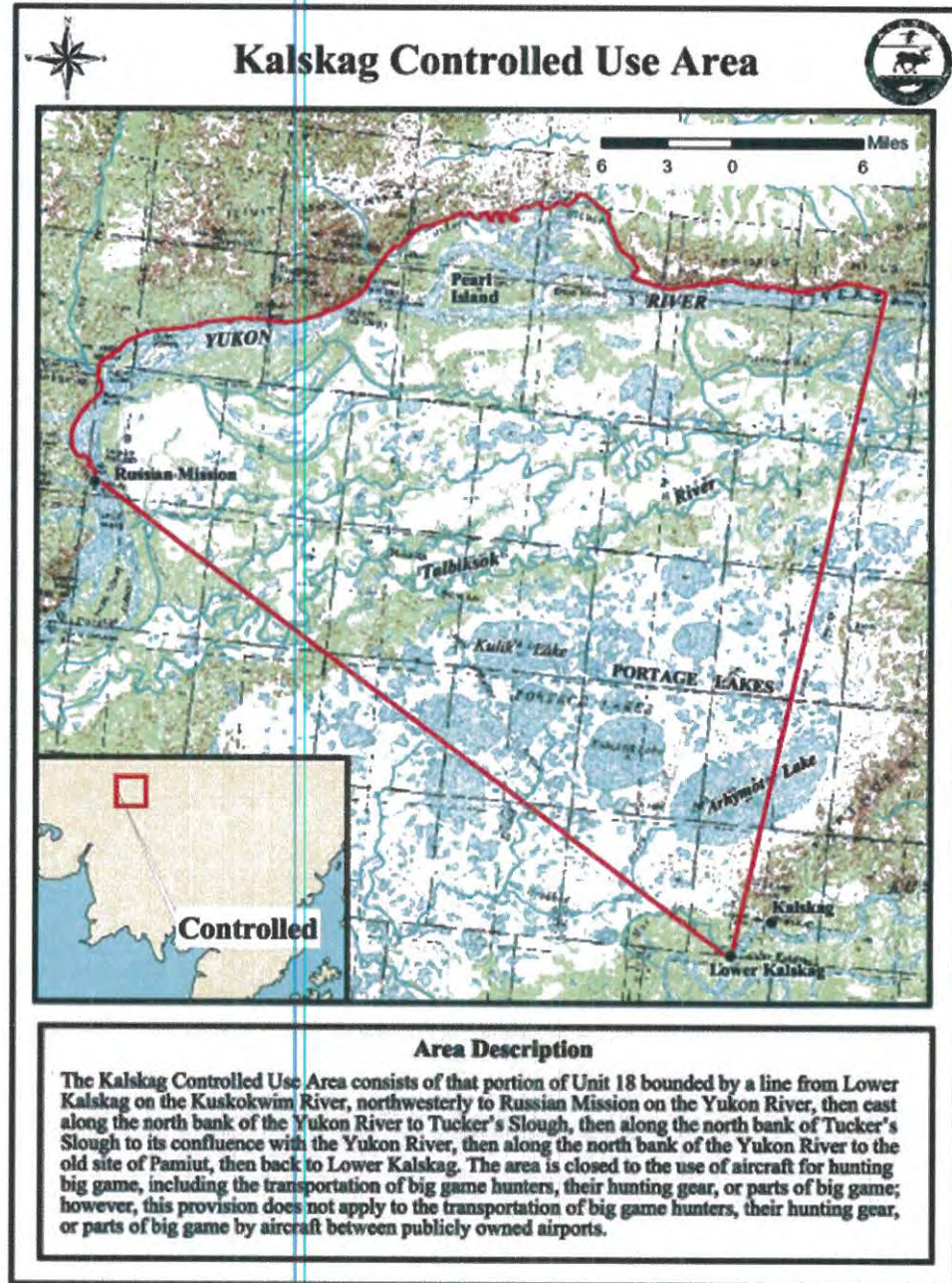
Dec. 1 - Mar. 15

NONRESIDENT HUNTERS:

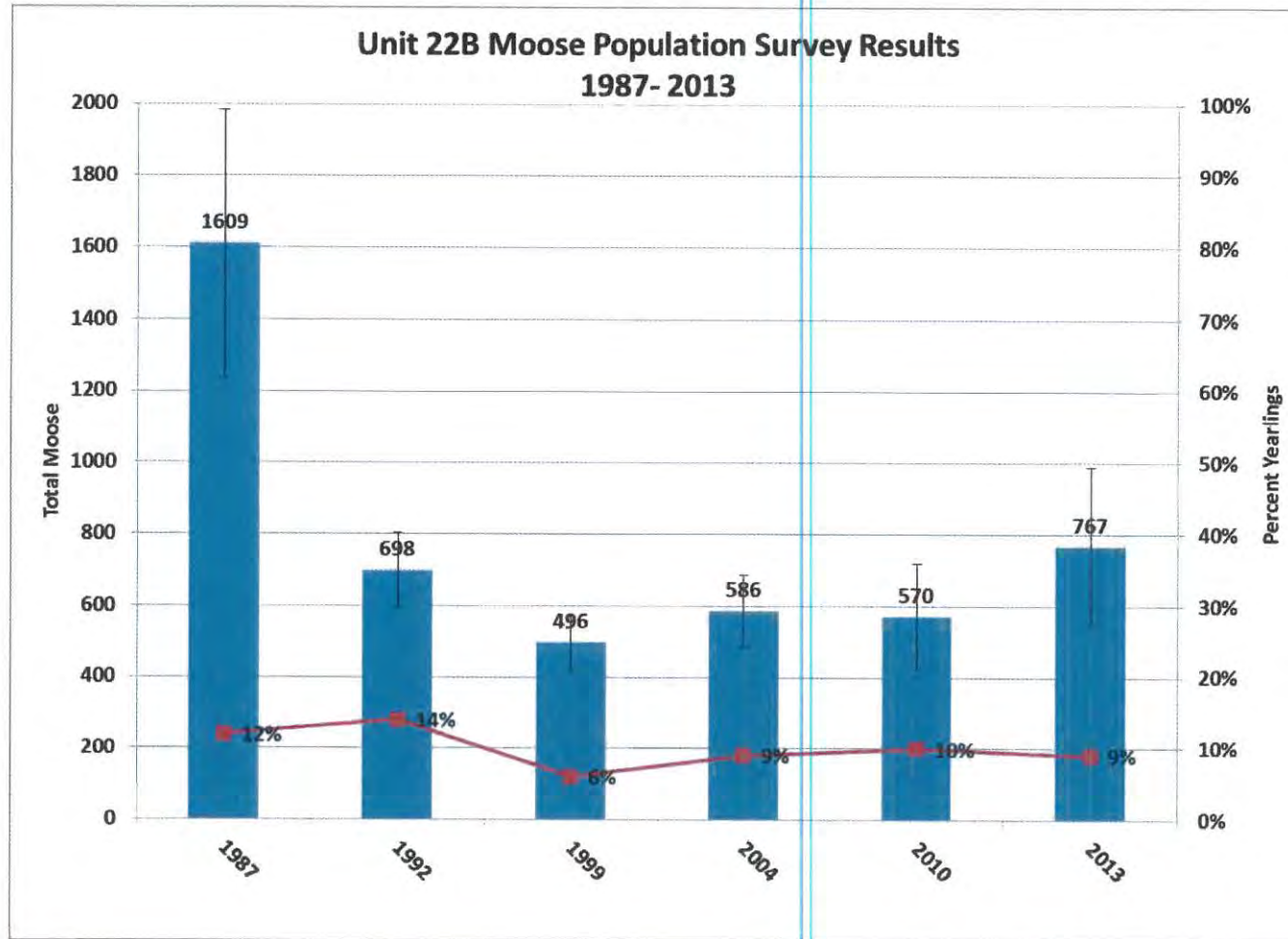
1 antlered bull

Sept. 1 - Sept. 30

Kalskag CUA



Unit 22B West: Moose Population



- 2013 population estimate = 767 ± 29% at 90% C.I.
- Density = 0.3 moose/mi²
- Recruitment rates of 6 – 9% since 1997

Proposal 18: Wolf

This proposal changes wolf hunting in Unit 22:

- Lengthen the season to Aug. 1 – May 31

This is a public proposal.

Department Recommendation: **Neutral**

Advisory Committee Recommendation:

- Southern Norton Sound AC **Support**
- Northern Norton Sound AC **Oppose**

Impact of Lengthened Season

- Maternal females are dependent on pack members for food in May
- Wolves spend substantial time near den sites in May
- Pelt conditions begin to deteriorate in May

Proposal 19: Wolverine

This proposal would:

- change wolverine hunting in Unit 22 by extending the open season to Sept. 1 – April 30.

This is a public proposal.

Department Recommendation: **Neutral**

Advisory Committee Recommendation:

- Southern Norton Sound AC **Oppose**
- Northern Norton Sound AC **Oppose**

Considerations and Conclusions

- Reproductive females are vulnerable to harvest during the denning period
- A portion of the increased harvest will include reproductive females.
- Harvest of reproductive females may negatively affect future recruitment and productivity.

– End –

Questions?

Anaktuvuk Pass – Pounds Per Capita Caribou Harvest

