

South Alaska Peninsula Post-June Salmon Fishery

by
Nathaniel W. Nichols



Report to the Alaska Board of Fisheries
February 2013

Written Report: RC 3; Tab 1

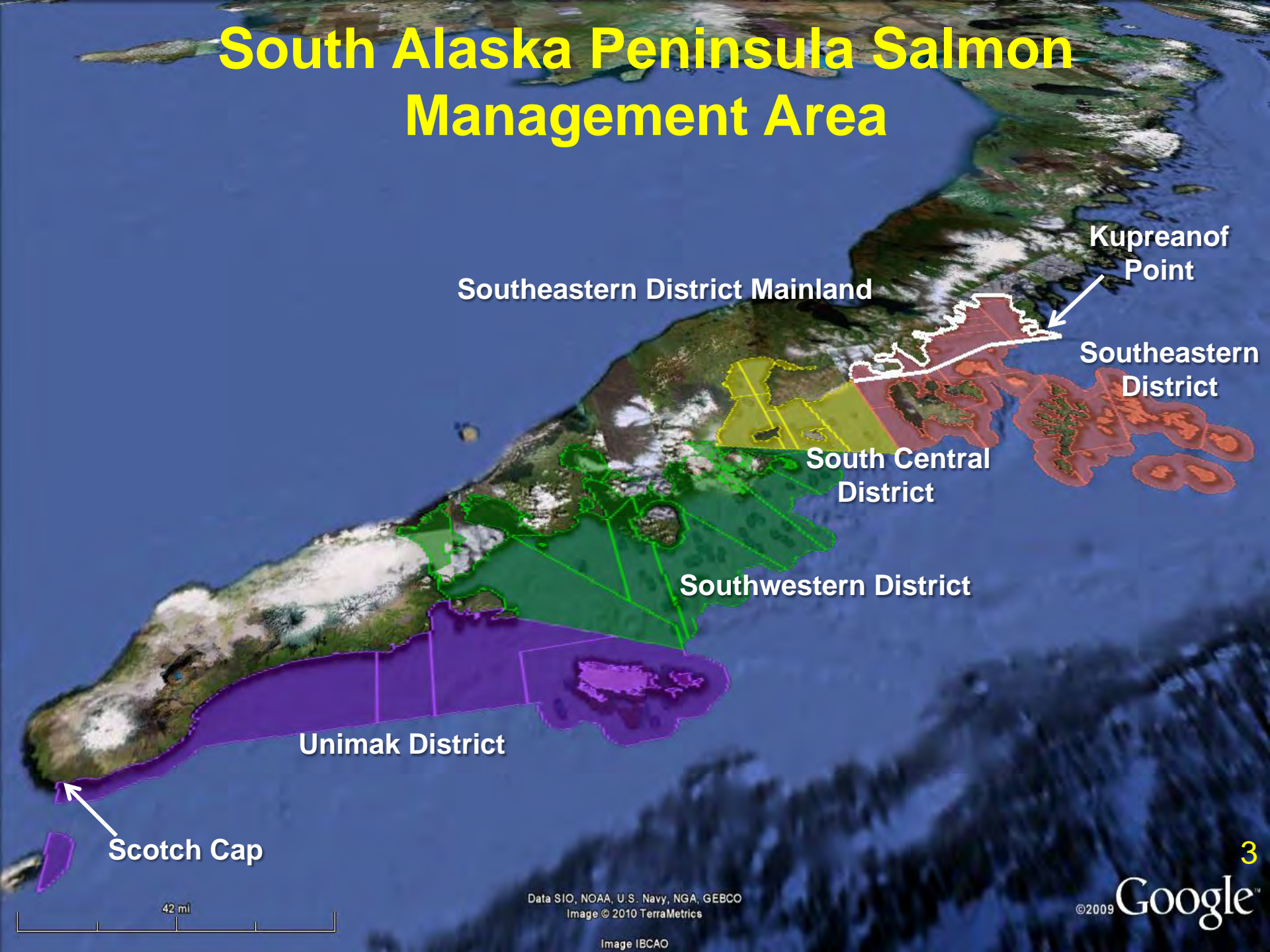
Staff Comments: RC 2

South Alaska Peninsula Post-June Salmon Fishery

Topics to be covered:

1. Fishery location
2. Seine test fishery
3. Post-June fishing periods and terminal harvest areas
4. 2010–2012 season summaries
5. Post-June proposals and issues

South Alaska Peninsula Salmon Management Area



Data SIO, NOAA, U.S. Navy, NGA, GEBCO
Image © 2010 TerraMetrics

Post-June Seine Test Fishery

The seine test fishery in the Shumagin Islands Section is conducted in early July to determine the presence and abundance of immature salmon.

“Immature salmon, per set” is defined as the number of immature king, sockeye, coho, and chum salmon observed to be gilled in the seine web. (5 AAC 09.366(i))

If 100 or more immature salmon per seine set are present, the seine fishery will be closed in specified areas until the abundance is below the threshold of 100 immature salmon per seine set.

If fewer than 100 immature salmon per seine set are present, then the fishery may open on July 6 to both seine and set gillnet gear.

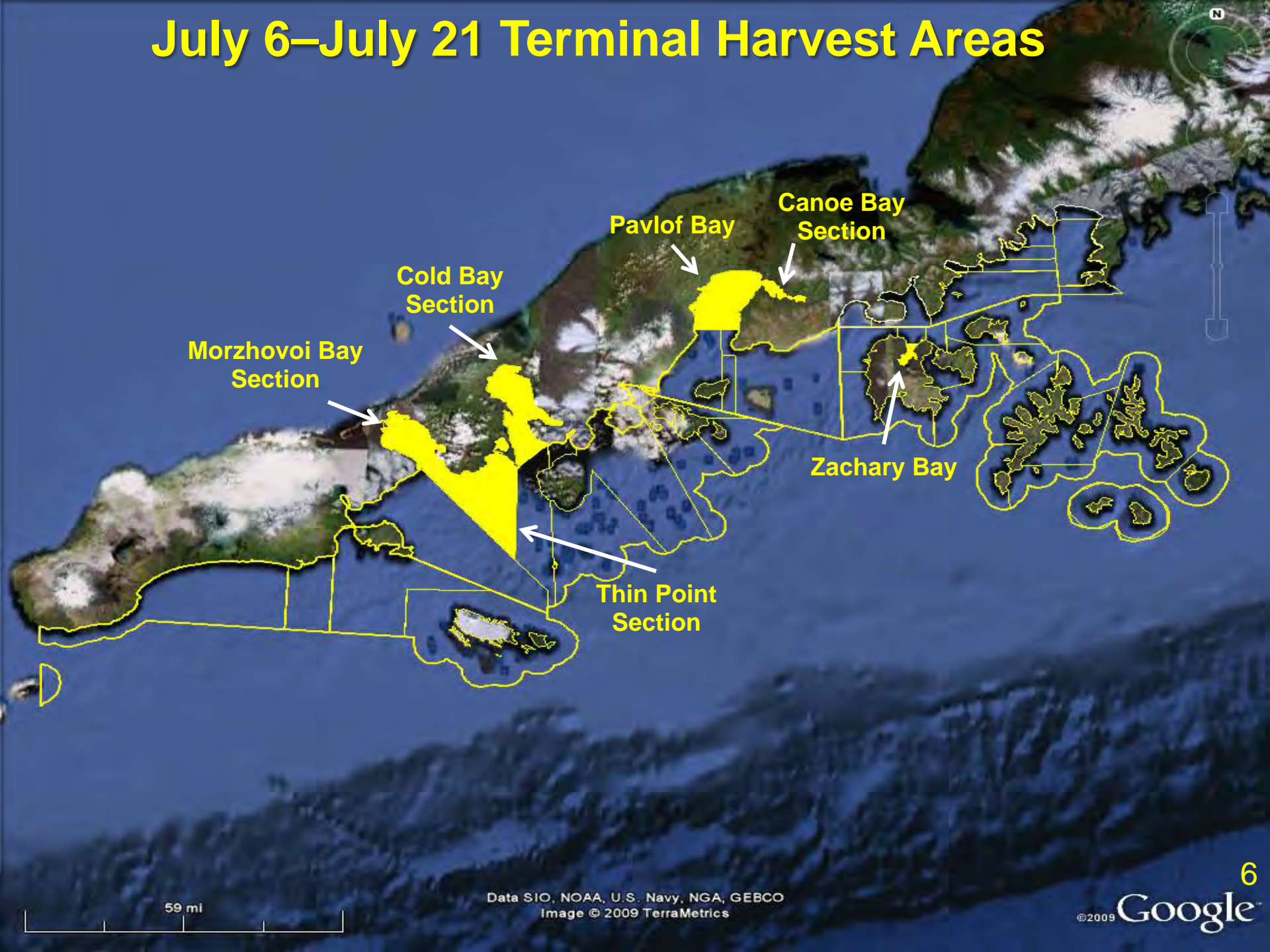
If above the threshold, set gillnet gear is permitted to fish in areas closed to seine gear due to the presence of immature salmon.

Post-June Salmon Fishery Schedule for July 2012

July 2012

Sunday	Monday	Tuesday	Wednesday	Thursday	Friday	Saturday
1	2	3	4	5	6	7
				12:01 AM	Open 21 Hours	9:00 PM
8	9	10	11	12	13	14
9:00 PM	Open 24 Hours	9:00 PM	9:00 PM	Open 24 Hours	9:00 PM	9:00 PM
15	16	17	18	19	20	21
Open 24 Hours	9:00 PM	9:00 PM	Open 24 Hours	9:00 PM	9:00 PM	Open 24 Hours
22	23	24	25	26	27	28
	NOON	Open 36 Hours		MIDNIGHT	12:01 AM	Open 36 Hours
29	30	31				
	NOON	Open 36 Hours		MIDNIGHT		

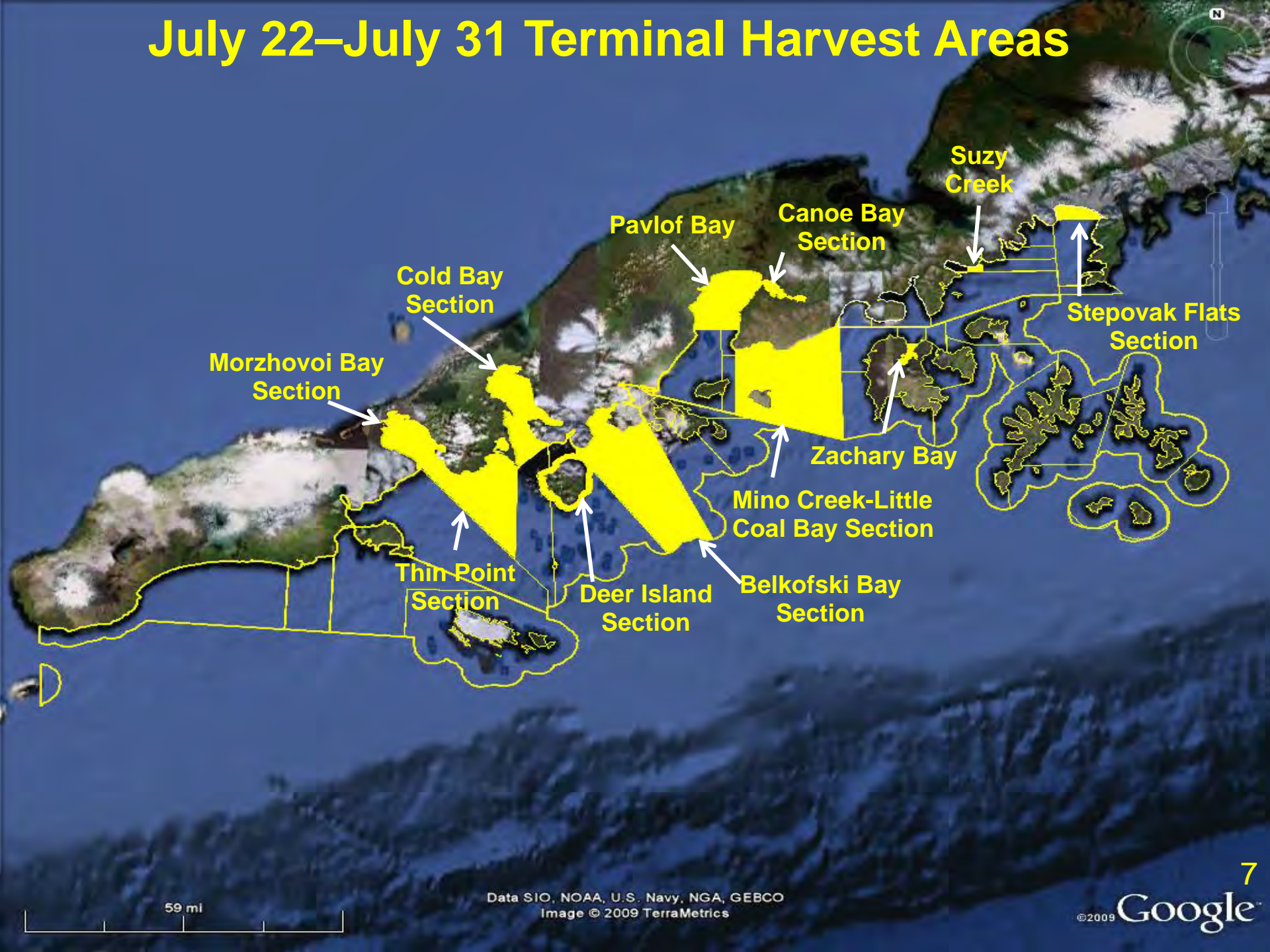
July 6–July 21 Terminal Harvest Areas



59 mi

Data SIO, NOAA, U.S. Navy, NGA, GEBCO
Image © 2009 TerraMetrics

July 22–July 31 Terminal Harvest Areas



59 mi

Data SIO, NOAA, U.S. Navy, NGA, GEBCO
Image © 2009 TerraMetrics

Post-July Fishing Periods

Commercial salmon fishing periods established by emergency order from August 1 through October 31.

August 1 through August 31 based on the run strength of local sockeye, coho, pink, and chum salmon stocks.

September 1 through October 31 based on abundance of coho salmon stocks, although the department may consider the run strength of late pink and chum salmon stocks.

Post-June Salmon Fishery 2010–2012 Season Summaries

Year	Number of Salmon Harvested				
	King	Sockeye	Coho	Pink	Chum
2010	3,848	287,491	161,698	486,748	444,245
2011	3,348	334,883	151,009	4,221,915	502,924
2012	1,162	247,246	85,435	173,969	186,783
Average	2,786	289,873	132,714	1,627,544	377,984

Average effort by gear type:

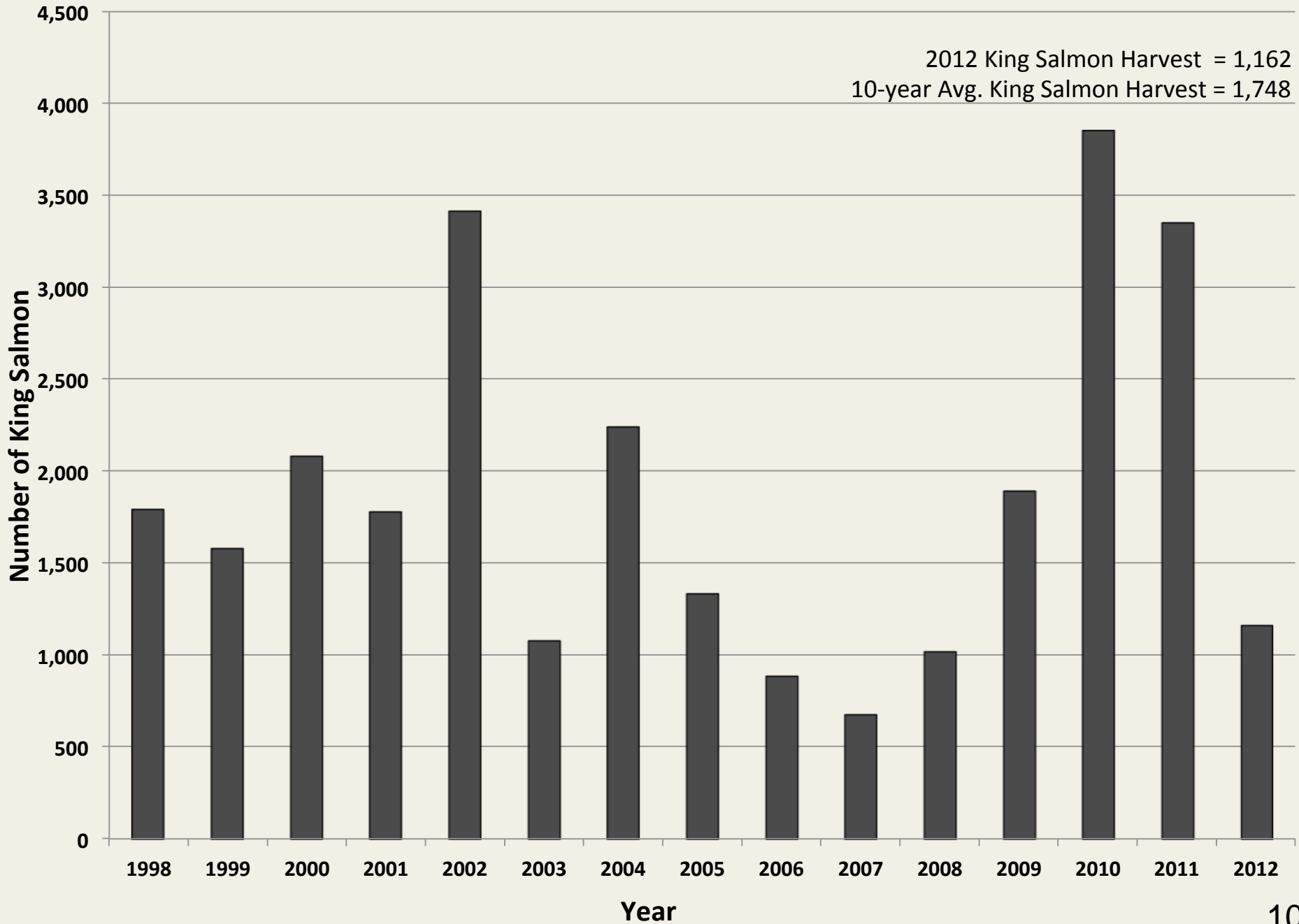
Purse seine permits	=	54
Drift gillnet permits	=	55
Set gillnet permits	=	52

Average percent of Post-June harvest:

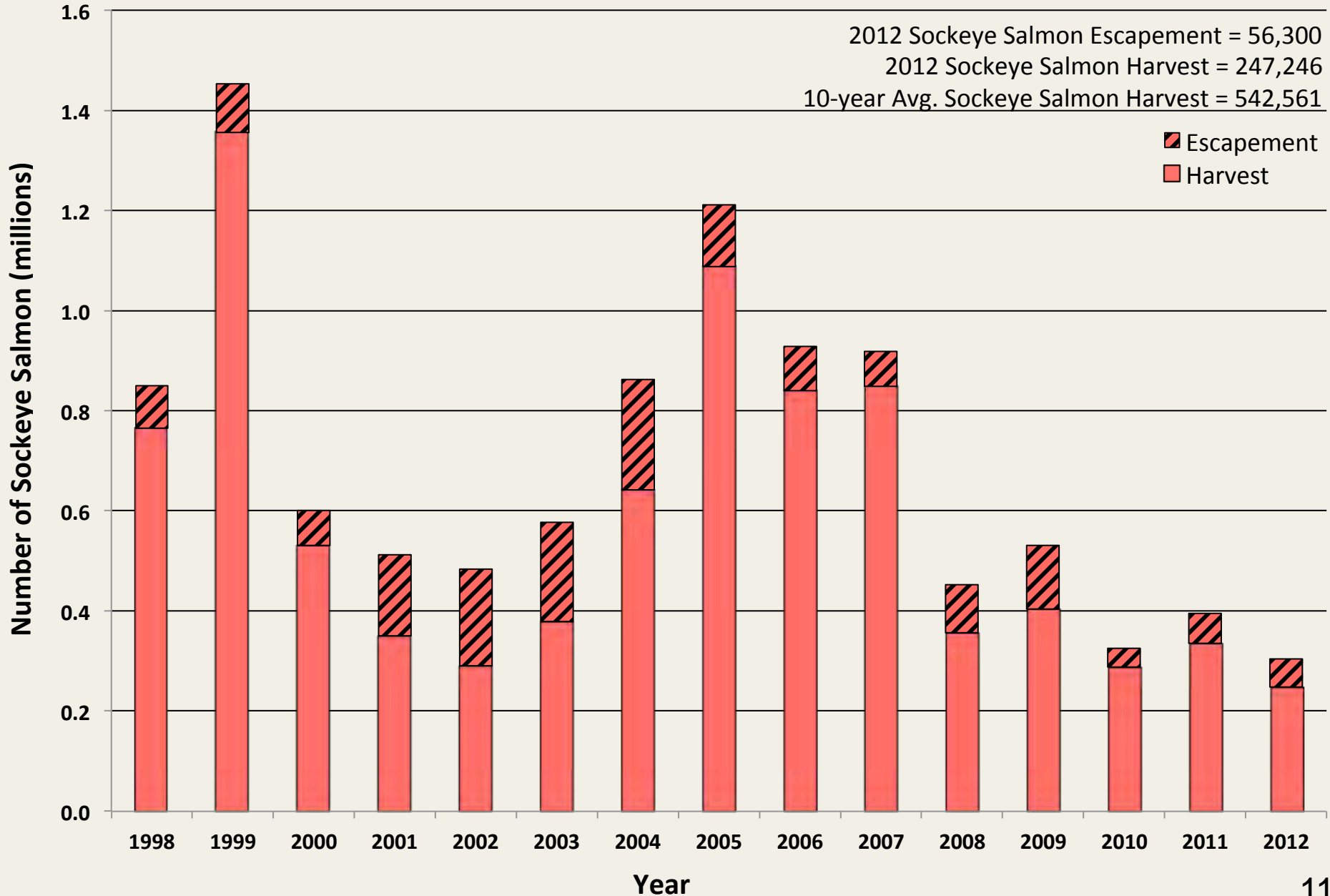
Purse seine	=	86%
Drift gillnet	=	5%
Set gillnet	=	9%

Average exvessel value = \$ 5,065,461

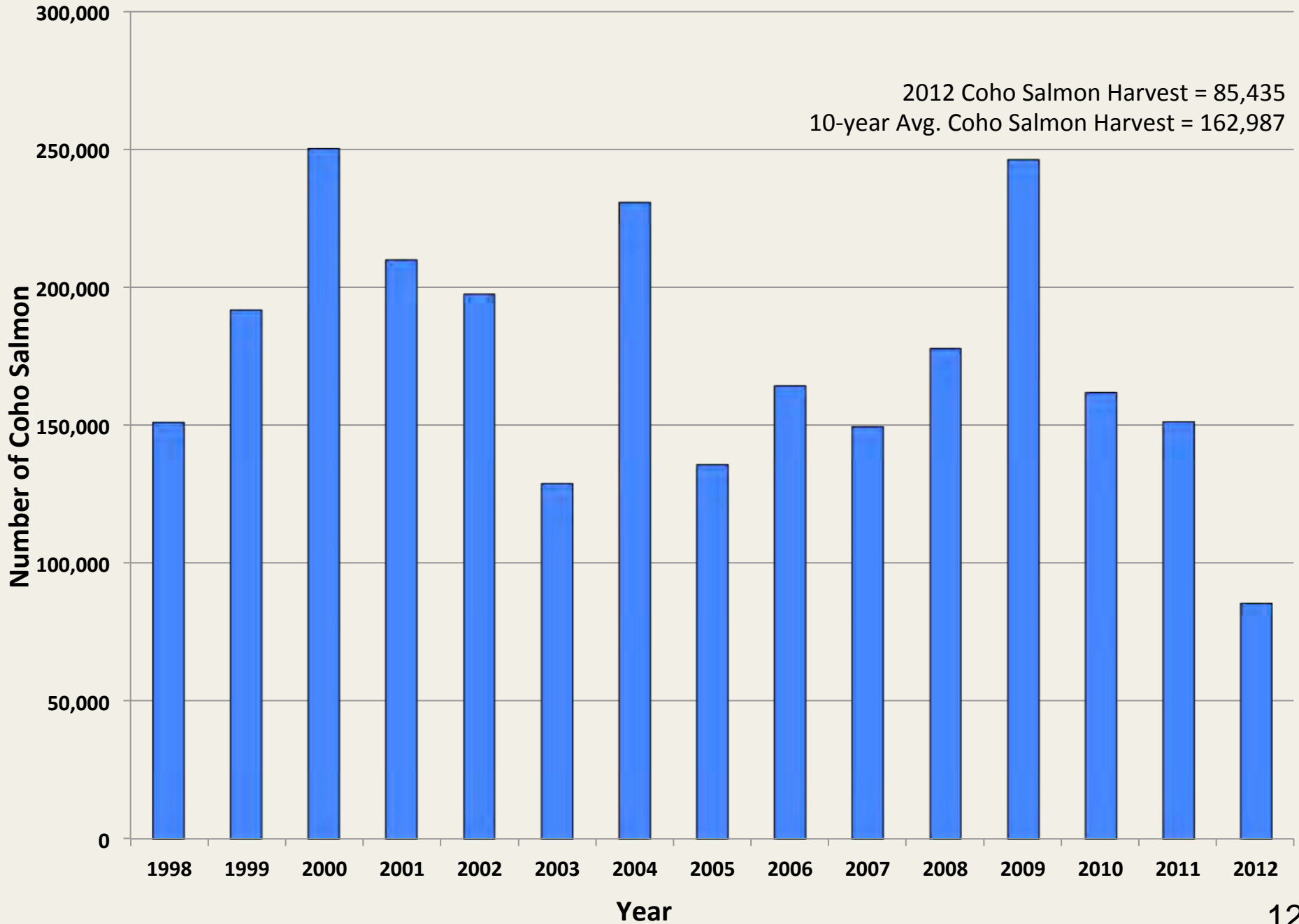
Post-June King Salmon Harvest, 1998–2012



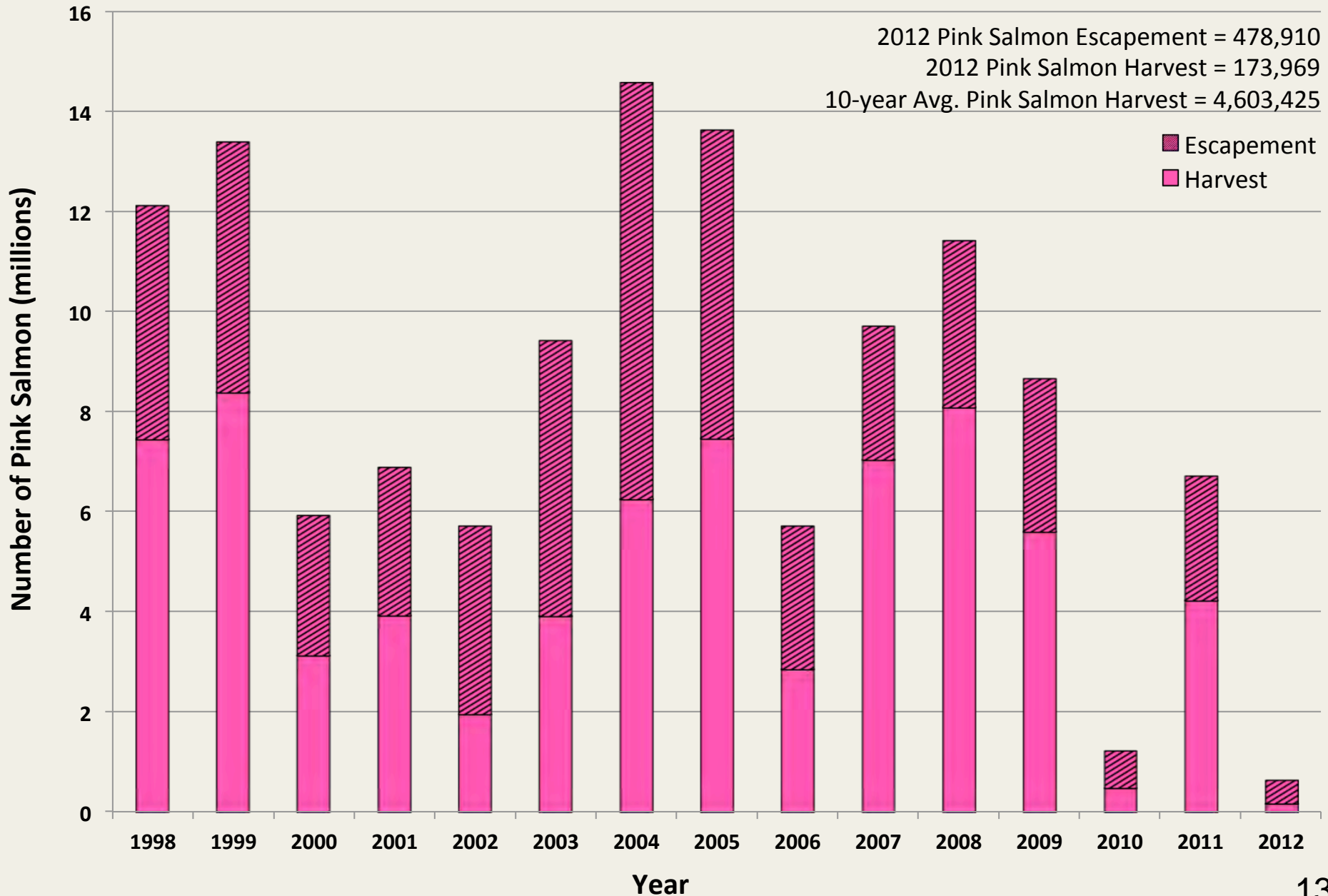
Post-June Sockeye Salmon Harvest and Indexed Escapement, 1998–2012



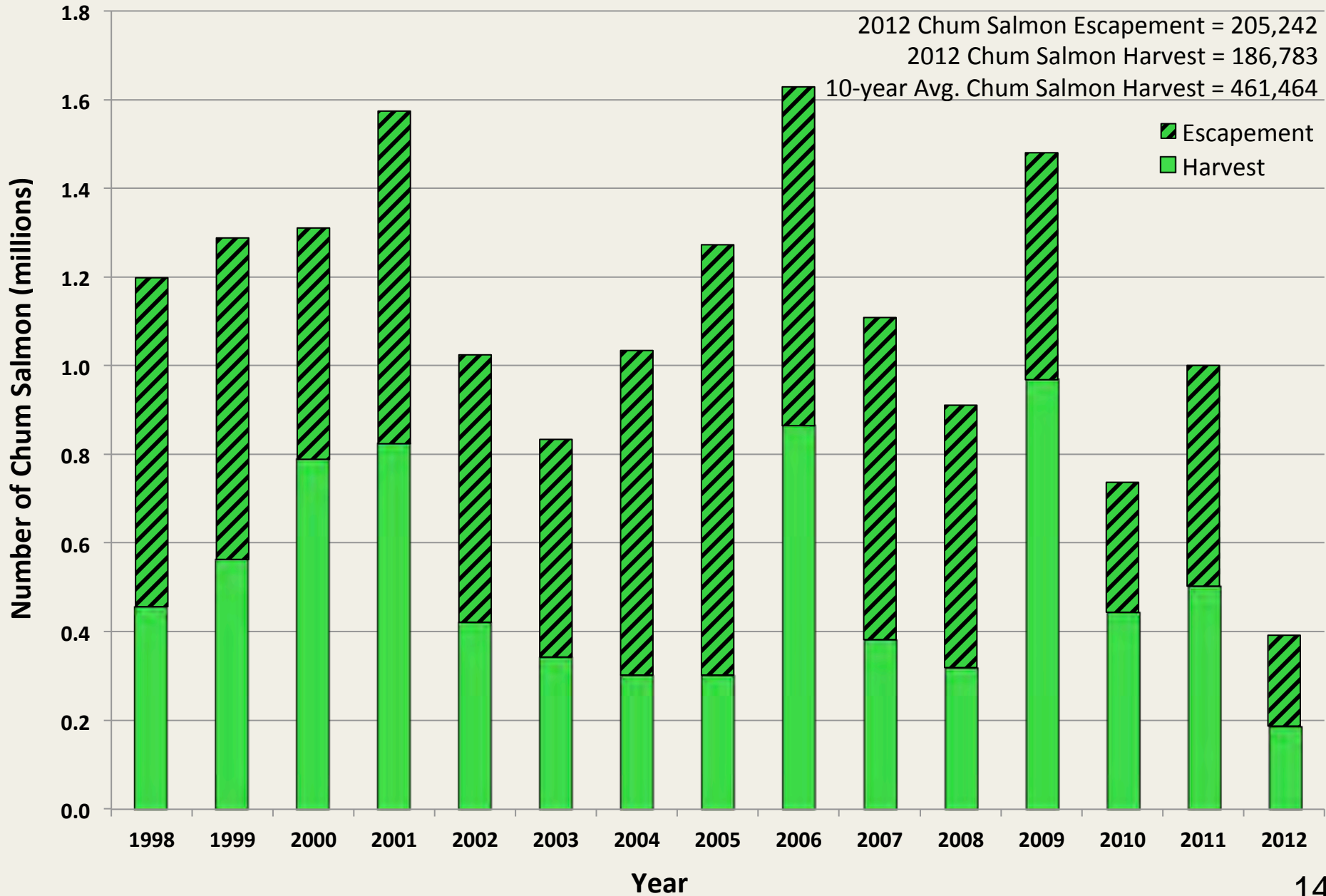
Post-June Coho Salmon Harvest, 1998–2012



Post-June Pink Salmon Harvest and Indexed Escapement, 1998–2012



Post-June Chum Salmon Harvest and Indexed Escapement, 1998–2012



Post-June Proposals

Eight proposals for the Post-June Salmon Fishery

- Modify the area managed under the *Post-June Salmon Management Plan*
Proposal 184
- Modify test fishery regulations
Proposal 185
- Modify closed waters
Proposal 186
- Modify the *Post-June Salmon Management Plan* July fishing schedule
Proposal 187–190
- Modify areas open to drift gillnet fishing
Proposal 195

