

The Southeastern District Mainland Salmon Fishery

by
Aaron Tiernan



Report to the Alaska Board of Fisheries
February 2013

Written Report: RC 3;Tab 1

Staff Comments: RC 2

Southeastern District Mainland (SEDM) Fishery

Topics to be covered:

1. Geographical description of the Southeastern District Mainland (SEDM)
2. *SEDM Salmon Management Plan*
3. 2010–2012 season summaries and fall fishery
4. Overview of proposals and issues

South Alaska Peninsula Salmon Management Area

Southeastern District Mainland

Kupreanof Point

Southeastern District

South Central District

Southwestern District

Unimak District

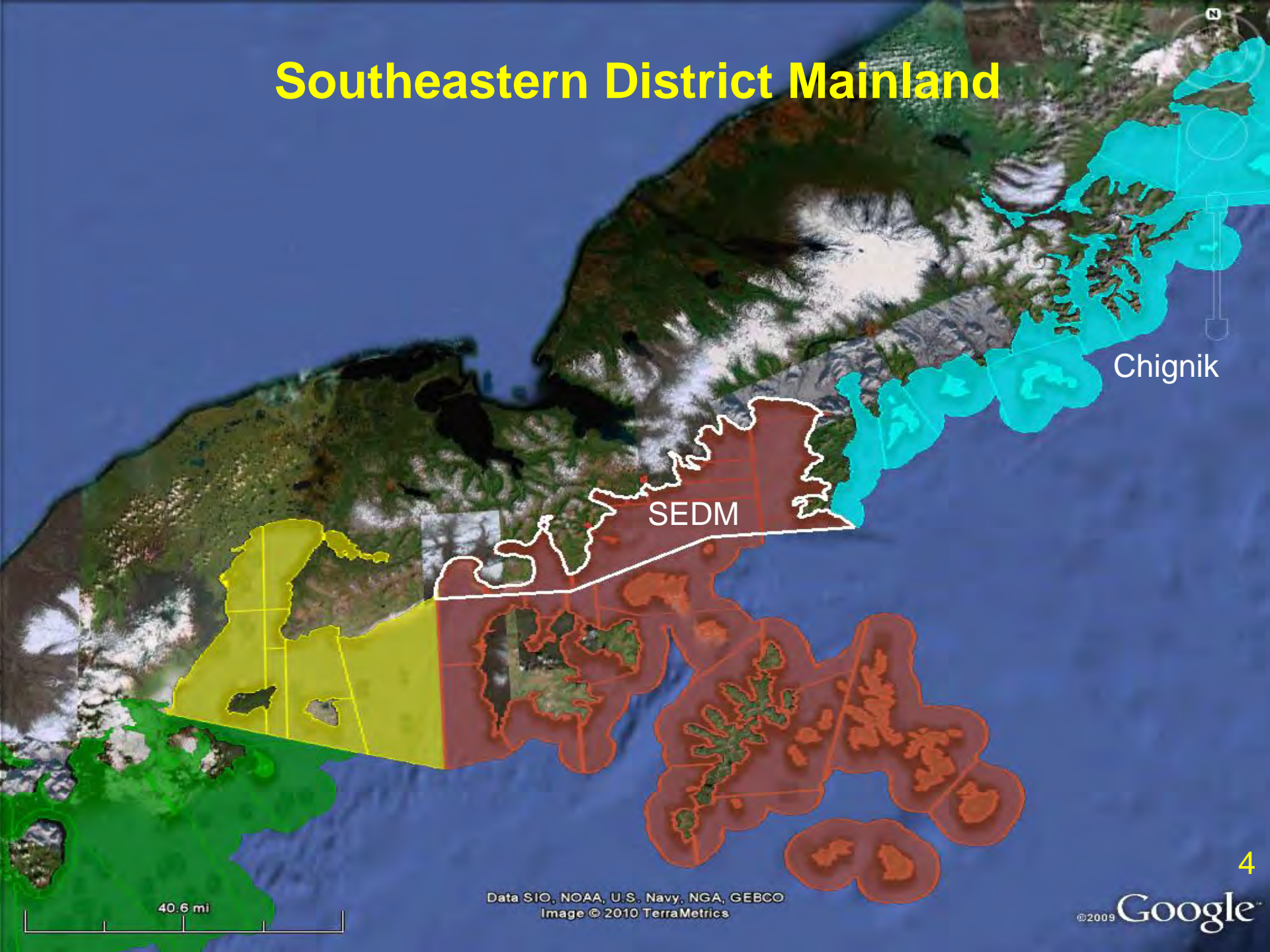
Scotch Cap

42 mi

Data SIO, NOAA, U.S. Navy, NGA, GEBCO
Image © 2010 TerraMetrics

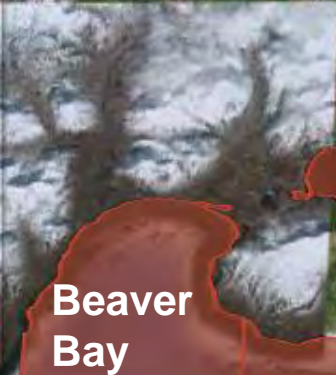
Image IBCAO

Southeastern District Mainland



Data SIO, NOAA, U.S. Navy, NGA, GEBCO
Image © 2010 TerraMetrics

Southeastern District Mainland



13.95 mi

Data SIO, NOAA, U.S. Navy, NGA, GEBCO
Image © 2010 TerraMetrics
Image © 2010 DigitalGlobe

SEDM Fishery

Topics to be covered:

1. Geographical description of the Southeastern District Mainland (SEDM)
2. *SEDM Salmon Management Plan*
3. 2010–2012 season summaries and fall fishery
4. Overview of proposals and issues

SEDM Management Plan

1. SEDM allocation is 7.6% of those sockeye salmon harvested within the Chignik Management Area.
2. June 1–July 25, 80% of the sockeye salmon caught in the SEDM are considered to be Chignik-bound (excluding the Northwest Stepovak Section after July 1).
3. Beginning July 1, the Northwest Stepovak Section is managed on sockeye salmon returns to Orzinski Lake.
4. If the Orzinski Lake escapement meets or exceeds 25,000 sockeye salmon, the Northwest Stepovak Section and Orzinski Bay may be opened concurrently as follows:
 - a. Set gillnet gear may be operated continuously until midnight July 25.
 - b. Seine gear will be operated as specified in regulations.

SEDM Management Plan

-continued-

5. From July 26–October 31, the fishery is managed for local pink, chum, and coho salmon stocks.
6. From July 26–October 31, the fishery will be closed for at least one 36-hour period within a seven-day period.

SEDM Fishery

Topics to be covered:

1. Geographical description of the Southeastern District Mainland (SEDM)
2. *SEDM salmon management plan*
3. 2010–2012 season summaries and fall fishery
4. Overview of proposals and issues

2010 SEDM Season

<u>Total sockeye salmon harvest:</u>	167,756
Chignik-bound	85,267
Local stocks	82,489

SEDM allocation:
(Harvest Allocation = 7.6%) 7.6%

Participation by gear type:

<u>Gear Type:</u>	<u>Number of Permits</u>
Set gillnet	45
Seine	16

Orzinski Lake sockeye salmon escapement = 18,039
(Escapement Goal Range: 15,000–20,000)

2011 SEDM Season

<u>Total sockeye salmon harvest:</u>	222,515
Chignik-bound	156,637
Local stocks	65,878

SEDM allocation:
(Harvest Allocation = 7.6%) 6.9%

Participation by gear type:

<u>Gear Type:</u>	<u>Number of Permits</u>
Set gillnet	52
Seine	14

Orzinski Lake sockeye salmon escapement = 16,764
(Escapement Goal Range: 15,000–20,000)

2012 SEDM Season

<u>Total sockeye salmon harvest:</u>	218,601
Chignik-bound	126,083
Local stocks	92,518

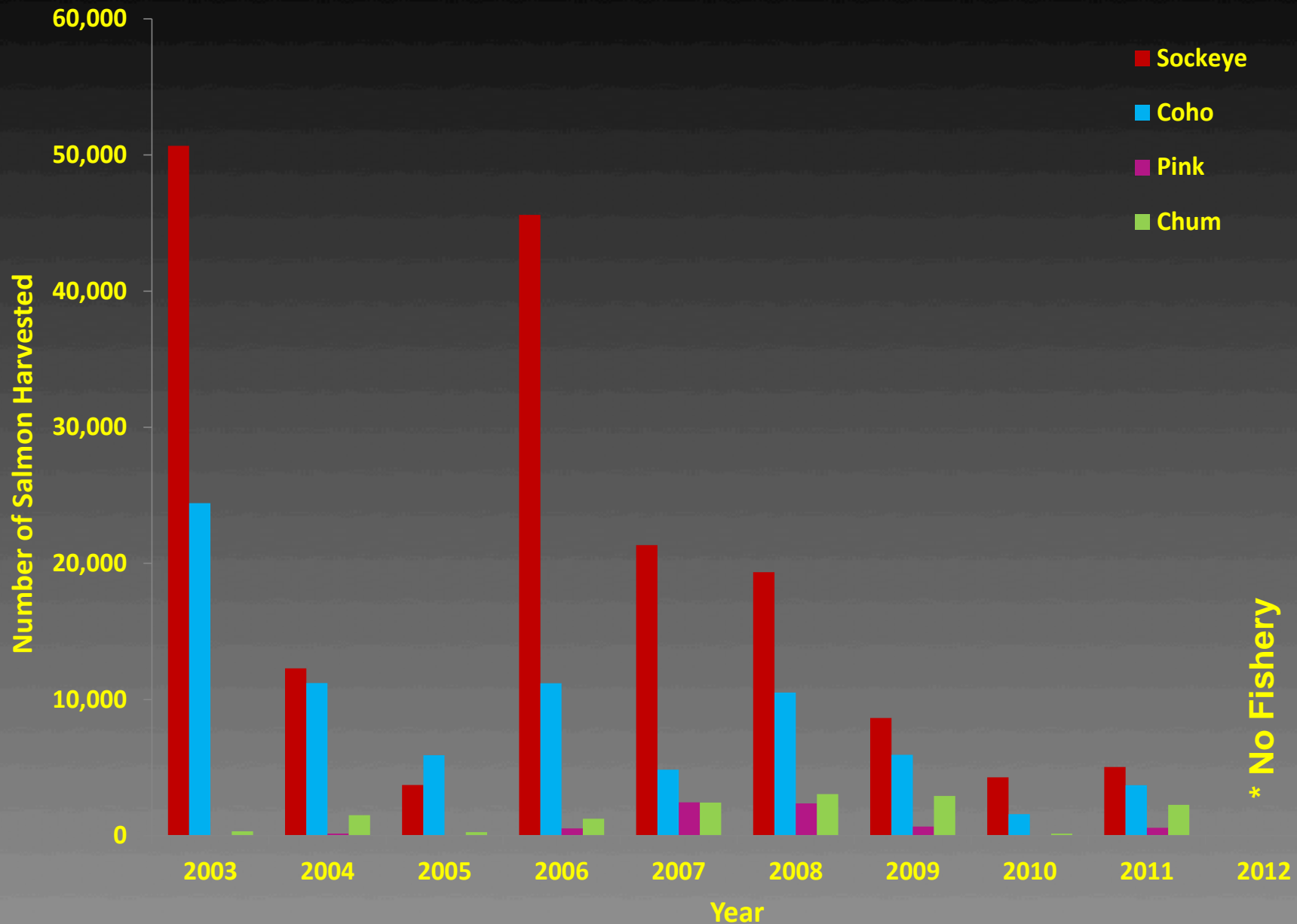
SEDM allocation:
(Harvest Allocation = 7.6%) 7.7%

Participation by gear type:

<u>Gear Type:</u>	<u>Number of Permits</u>
Set gillnet	48
Seine	17

Orzinski Lake sockeye salmon escapement = 17,243
(Escapement Goal Range: 15,000–20,000)

Salmon Harvested within SEDM from September 1 through October 31



* No Fishery

SEDM Fishery

Topics to be covered:

1. Geographical description of the Southeastern District Mainland (SEDM)
2. *SEDM salmon management plan*
3. 2010–2012 season summaries and fall fishery
4. Overview of proposals and issues

SEDM Proposals

- Changes to *SEDM Salmon Management Plan*
Proposals 173 and 176
- Fishing time during allocation period
Proposals 174 and 175
- Fishing time during the fall fishery
Proposals 177 and 178
- Gear and closed waters changes
Proposals 193 and 194

The End

