

South Unimak-Shumagin Islands June Salmon Fisheries

by

Aaron Poetter



Report to the Alaska Board of Fisheries
February 2013

Written Report: RC 3; Tab 1
Staff Comments: RC 2

South Unimak and Shumagin Islands June Salmon Fisheries

Topics to be covered:

1. Fishery location
2. Economic importance to Area M user groups
3. History of fishery
4. Current regulations
5. 2010–2012 season summaries
6. Overview of proposals and issues

South Alaska Peninsula Salmon Management Area



Kupreanof Point

Scotch Cap

42 mi

Data SIO, NOAA, U.S. Navy, NGA, GEBCO
Image IBCAO
Image © 2010 TerraMetrics

©2009 Google³

South Alaska Peninsula Salmon Management Area

Southeastern District Mainland

Southeastern District

South Central District

Southwestern District

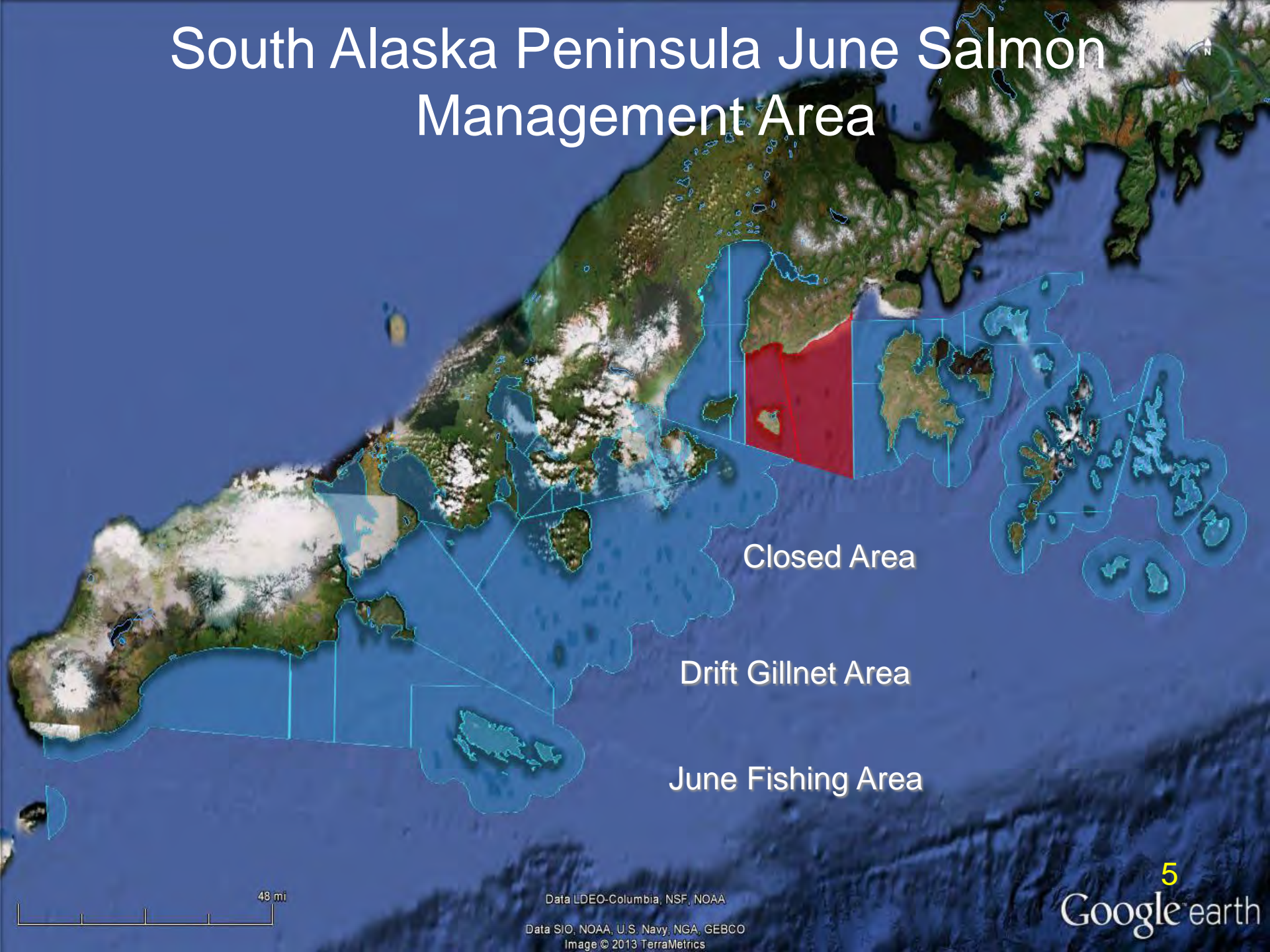
Unimak District

42 mi

Data SIO, NOAA, U.S. Navy, NGA, GEBCO
Image © 2010 TerraMetrics

Image IBCAO

South Alaska Peninsula June Salmon Management Area



Closed Area

Drift Gillnet Area

June Fishing Area

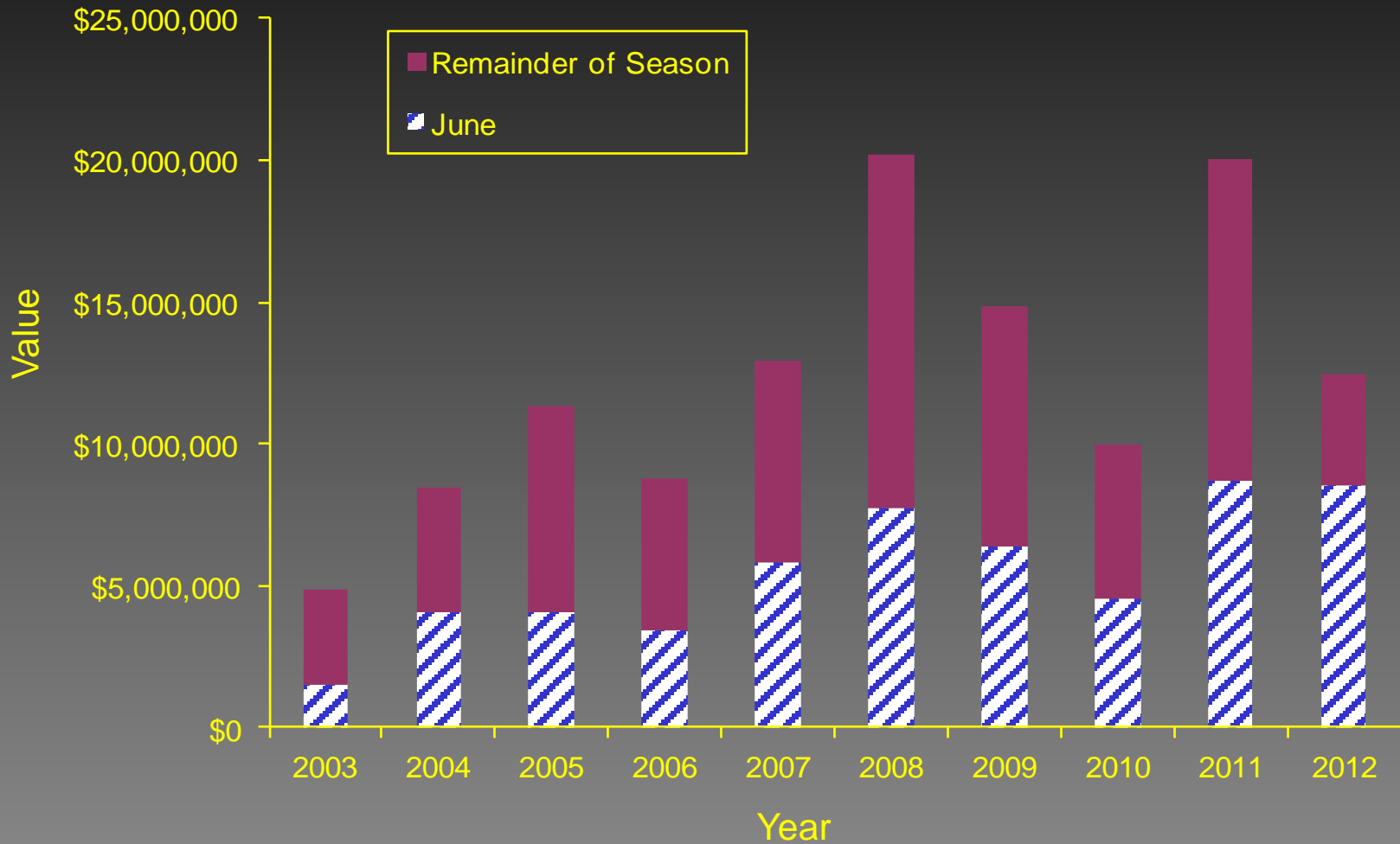
48 mi

Data LDEO-Columbia, NSF, NOAA

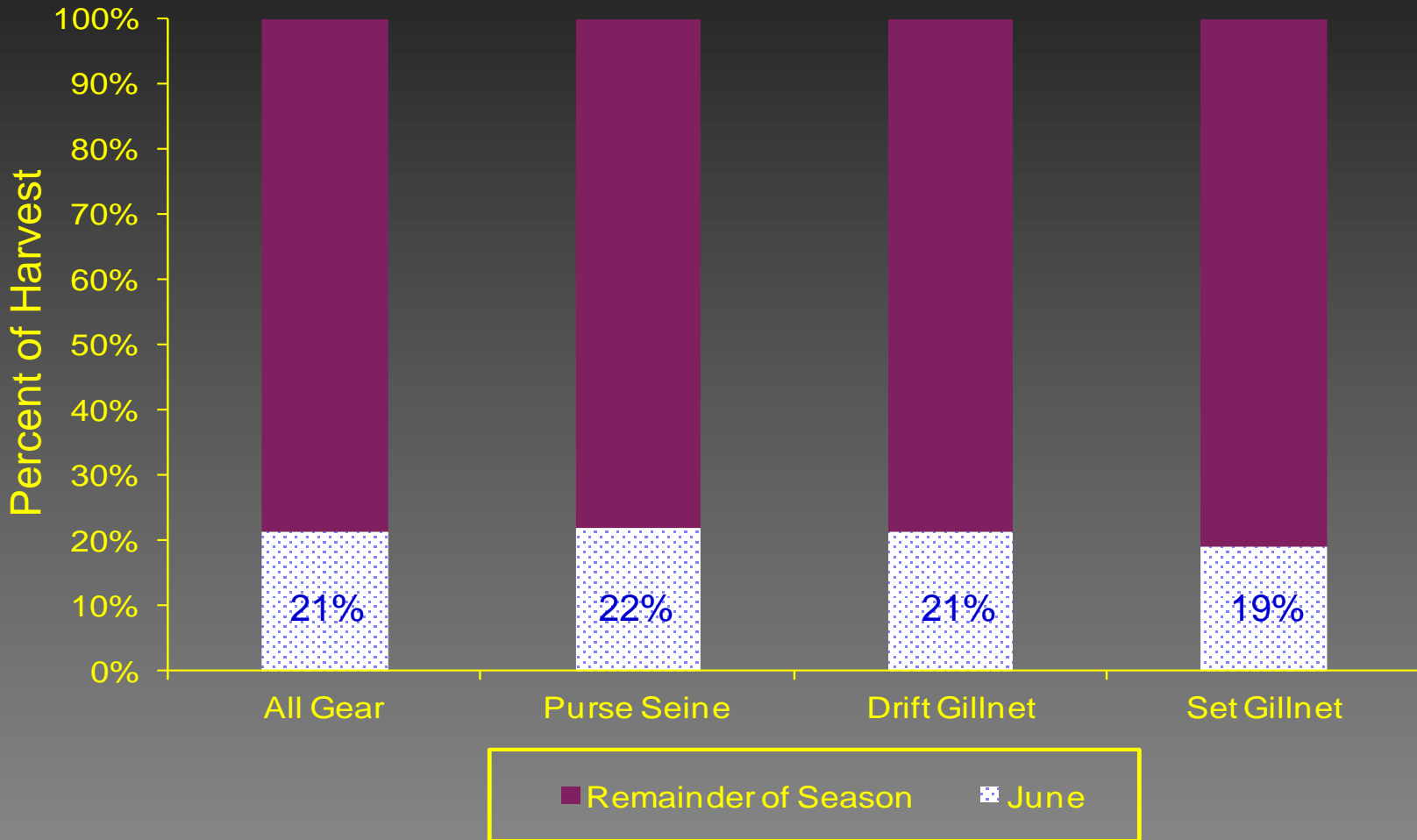
Data SIO, NOAA, U.S. Navy, NGA, GEBCO

Image © 2013 TerraMetrics

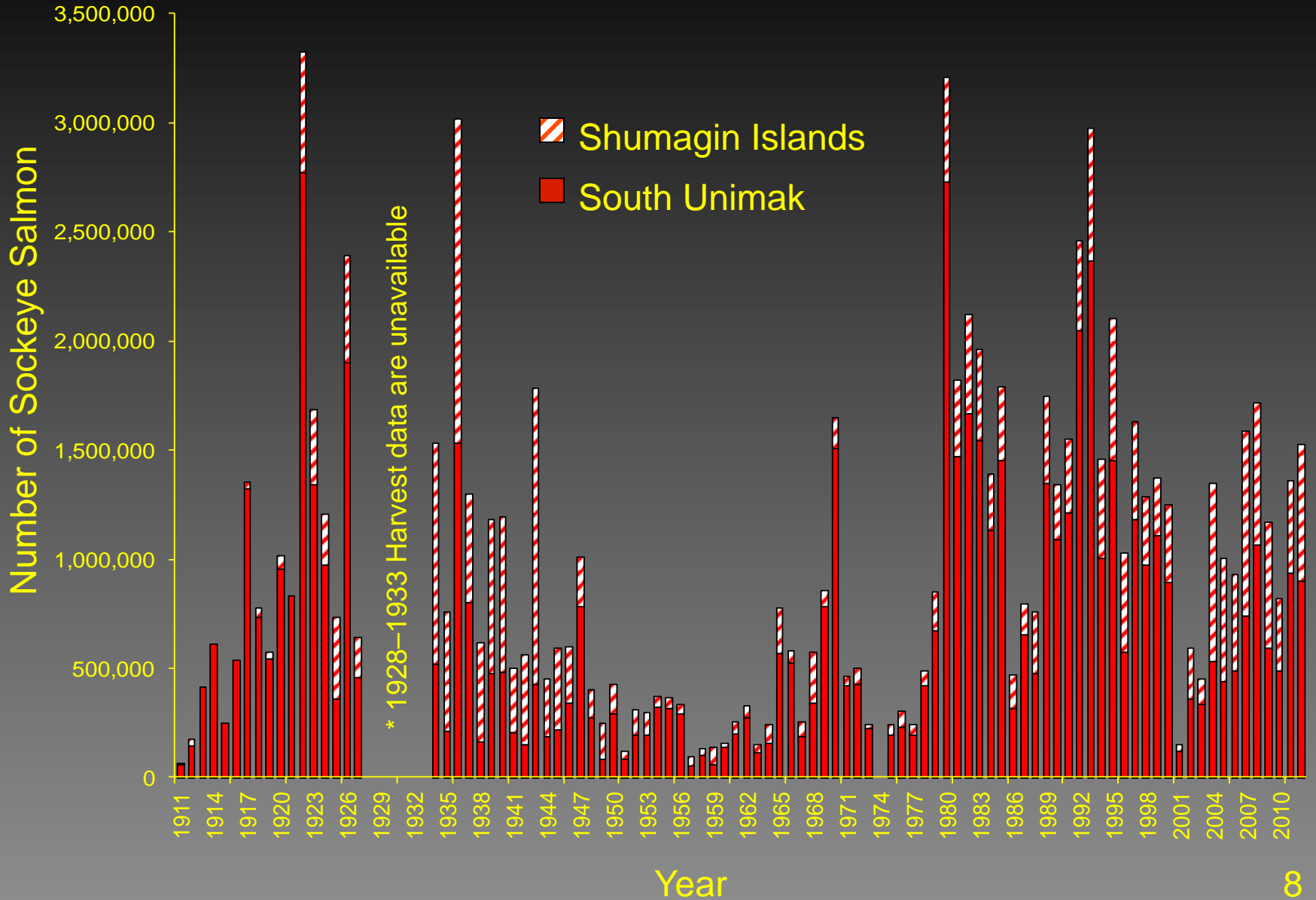
Annual South Unimak and Shumagin Islands June Fisheries Exvessel Value in Relation to the Annual Total Season Area M Value, 2003–2012



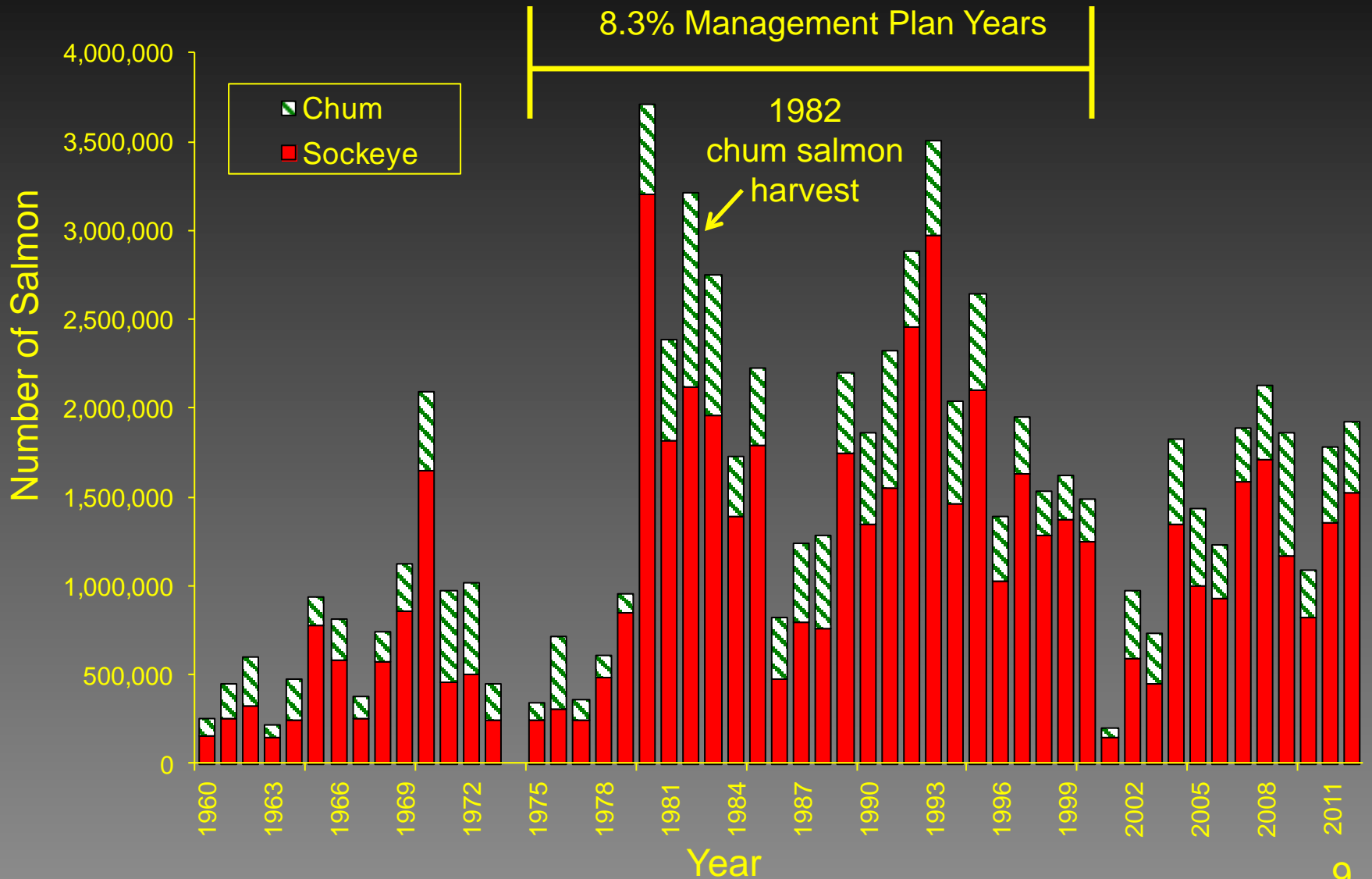
South Unimak and Shumagin Islands June Salmon Fishery Average Harvest as a Percent of Entire Area M Season Harvest, by Gear Type, 2003–2012



1911–2012 South Unimak and Shumagin Islands June Fisheries Historic Sockeye Salmon Harvest *



South Unimak and Shumagin Islands June Fisheries Sockeye and Chum Salmon Harvest, 1960–2012



Current Regulations Pertaining to the South Unimak and Shumagin Islands June Salmon Fisheries

- The season may open on June 7.
- Fishing periods will begin at 6:00 a.m., last for 88-hours in length, and close at 10:00 p.m. Periods will be separated by 32-hour closures.
- The final fishing period will end at 10:00 p.m. on June 29.
- Concurrent fishing periods will be established for all gear types.
- Fishing periods in the Unimak, Southwestern, South Central districts, and the Shumagin Islands Section run concurrently.

South Unimak and Shumagin Islands June Salmon Fishing Schedule, 2012

June							
Sunday	Monday	Tuesday	Wednesday	Thursday	Friday	Saturday	
June fishing time = 416 hours					1	2	
3	4	5	6	7	8	9	
				6:00 AM	Open 88 hours		
10	11	12	13	14	15	16	
10:00 PM		6:00 AM	Open 88 hours			10:00 PM	
17	18	19	20	21	22	23	
6:00 AM	Open 88 hours			10:00 PM		6:00 AM	
24	25	26	27	28	29	30	
Open 88 hours		10:00 PM		6:00 AM	Open 64 hours		10:00 PM

South Unimak and Shumagin Islands June Fisheries 2010–2012 Season Summaries

Year	Number of Salmon Harvested				
	King	Sockeye	Coho	Pink	Chum
2010	3,118	818,865	27	332,435	271,700
2011	3,464	1,359,441	124	723,135	423,335
2012	6,371	1,528,018	12	259,612	392,305
Average	4,318	1,235,441	54	438,394	362,447

Average effort by gear type:

Purse seine permits	= 48
Drift gillnet permits	= 118
Set gillnet permits	= 56

Average percent of June harvest:

Purse seine	= 64%
Drift gillnet	= 30%
Set gillnet	= 6%

Average exvessel value: \$7,271,573

2013 Proposals Regarding the South Unimak and Shumagin Islands June Fisheries

Addressing multiple aspects of the June salmon management plan

Proposals 179, 181, and 182

Reinstate the chum salmon harvest cap

Proposal 180

Change the season opening date

Proposal 183

