



Dungeness Crab, Octopus, Weathervane Scallop, and Shrimp Fisheries in the Westward Region -Continued-

Nicholas Sagalkin
and
Mark Stichert

Oral Report: RC 3; Tab 3
Written Report: RC 3; Tab 7
Staff Comments: RC 2; Tab 1

AREA J SCALLOP PROPOSALS



SCALLOP PROPOSALS

- **PROPOSAL 350** – Allow weathervane scallop vessels to register for multiple registration areas (**OPPOSE**).
- **PROPOSAL 352** – Open waters currently closed to commercial scallop fishing near Mitrofanina Island (**OPPOSE**).
- **PROPOSAL 353** – Open waters currently closed to commercial scallop fishing south of Unimak Island (**NEUTRAL**).
- **PROPOSAL 354** – Clarify scallop boundary line descriptions (**SUPPORT**).

Alaska Scallop Fishery

- **State and federal management**
- **Limited to 9 vessels (LE / LLP)**
- **9 scallop management areas**
- **Area specific GHs**
- **100% observer coverage**
(Except Cook Inlet)
- **Crab bycatch limits**
- **Closed waters**



Proposal 350 – Scallop Vessel Registration



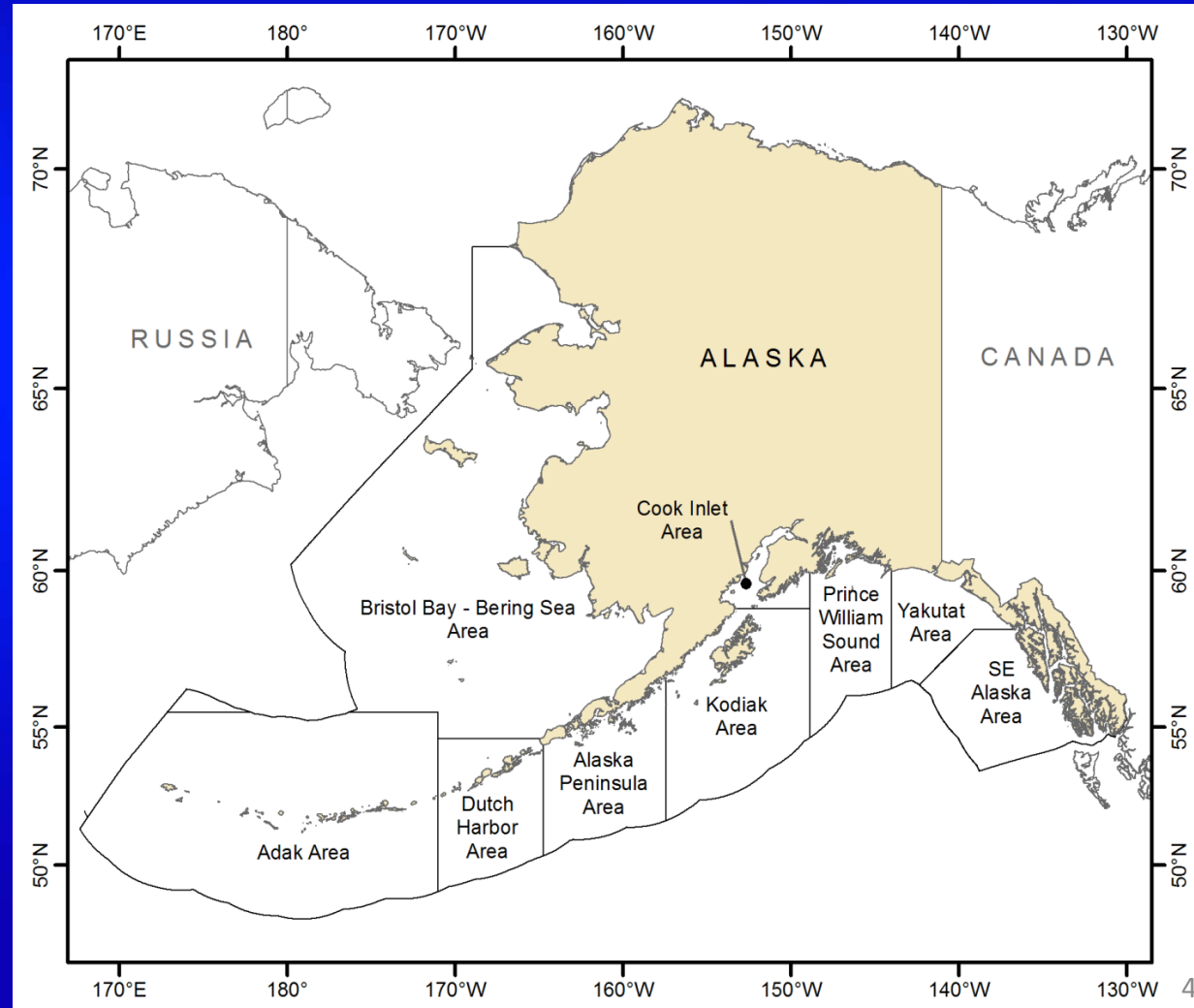
Allow vessels that carry onboard observer to register for multiple registration areas at the same time

Current Regulations

- Single area registration
- 100% observer coverage

If Adopted

- Decrease operating expenses for some vessels
- Limit observer debriefing opportunities
- May impact data quality



Scallop Observer Program

➤ Independent Contractors

➤ ADF&G Trained

- Trainee
- Certified

➤ Information Collected

- Retained/discarded scallop catch
- Processed meat weight
- Crab bycatch numbers
- Bycatch species composition
- Location/time/length/depth fished

➤ Deployment Briefings

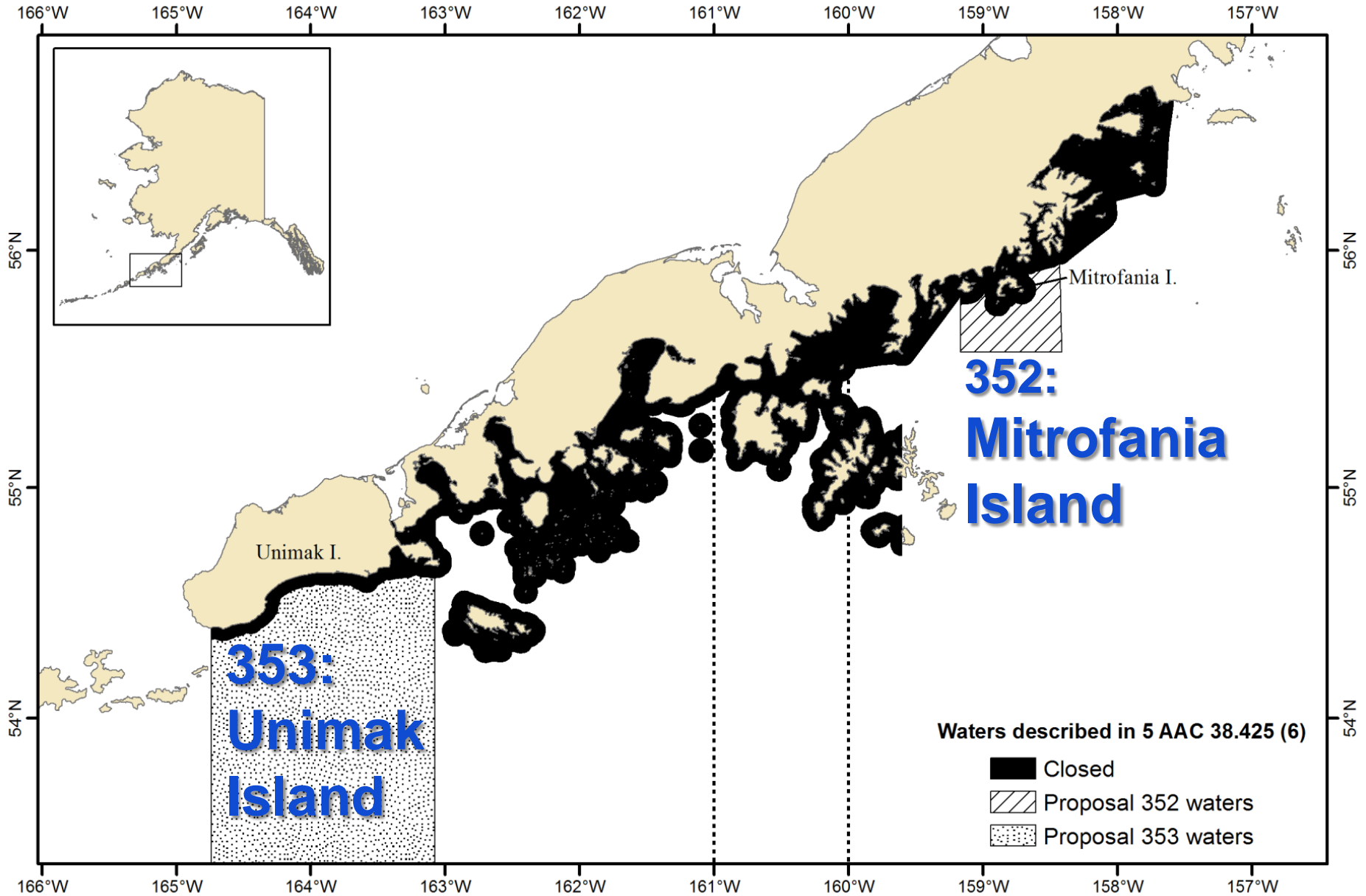
- Pre/mid/post trip debriefing

➤ Inseason and Post Season Use

- Harvest and bycatch monitoring
- GHL determination
 - Limited survey data



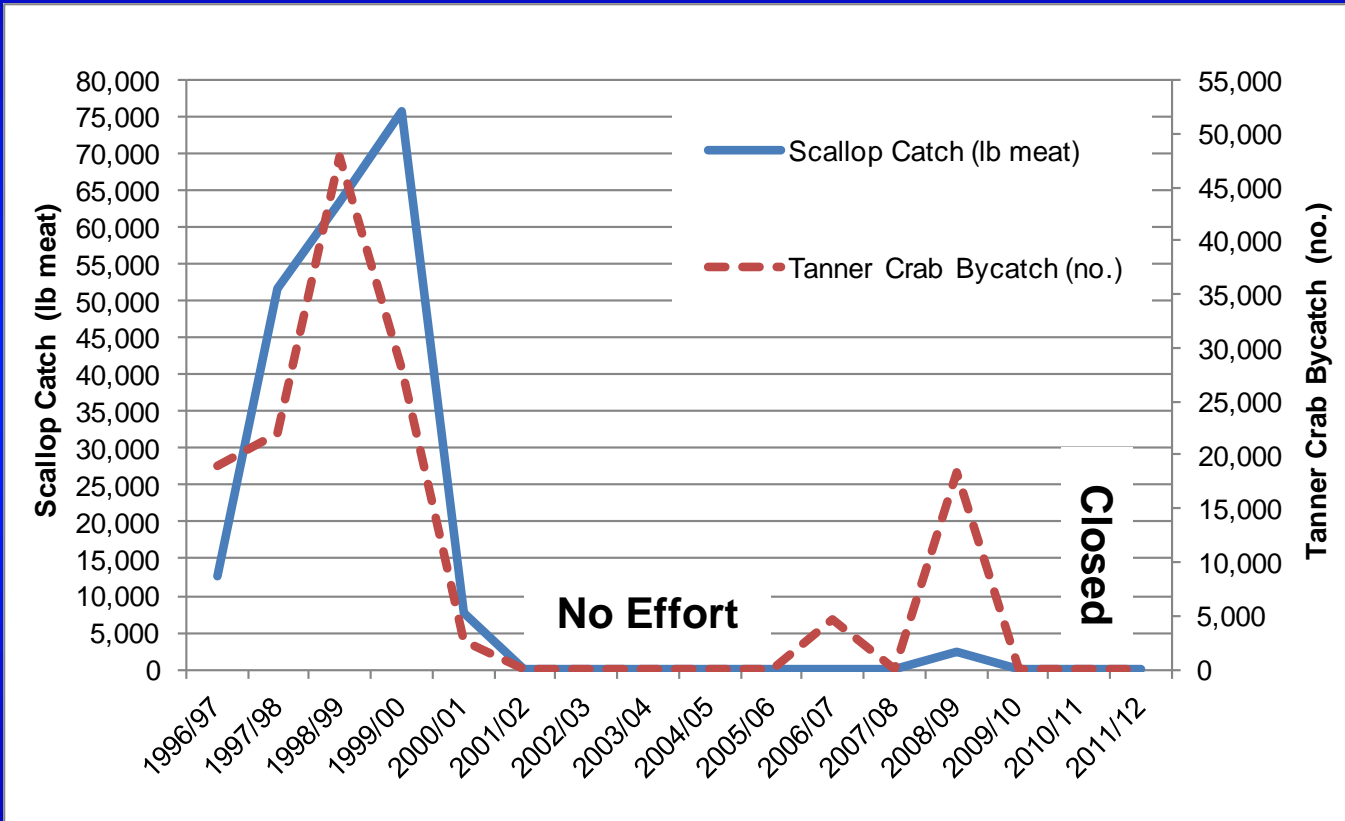
Proposals 352 and 353 – Scallop Closed Waters



Proposals 352 and 353 - Background



- Alaska Peninsula GHR = Capped at 100,000 lb
- Fishing season July 1 - February 15



- Since 2000 limited scallop fishing effort and high crab bycatch
- Fishery closed 2009/10 due to poor scallop catch and high bycatch

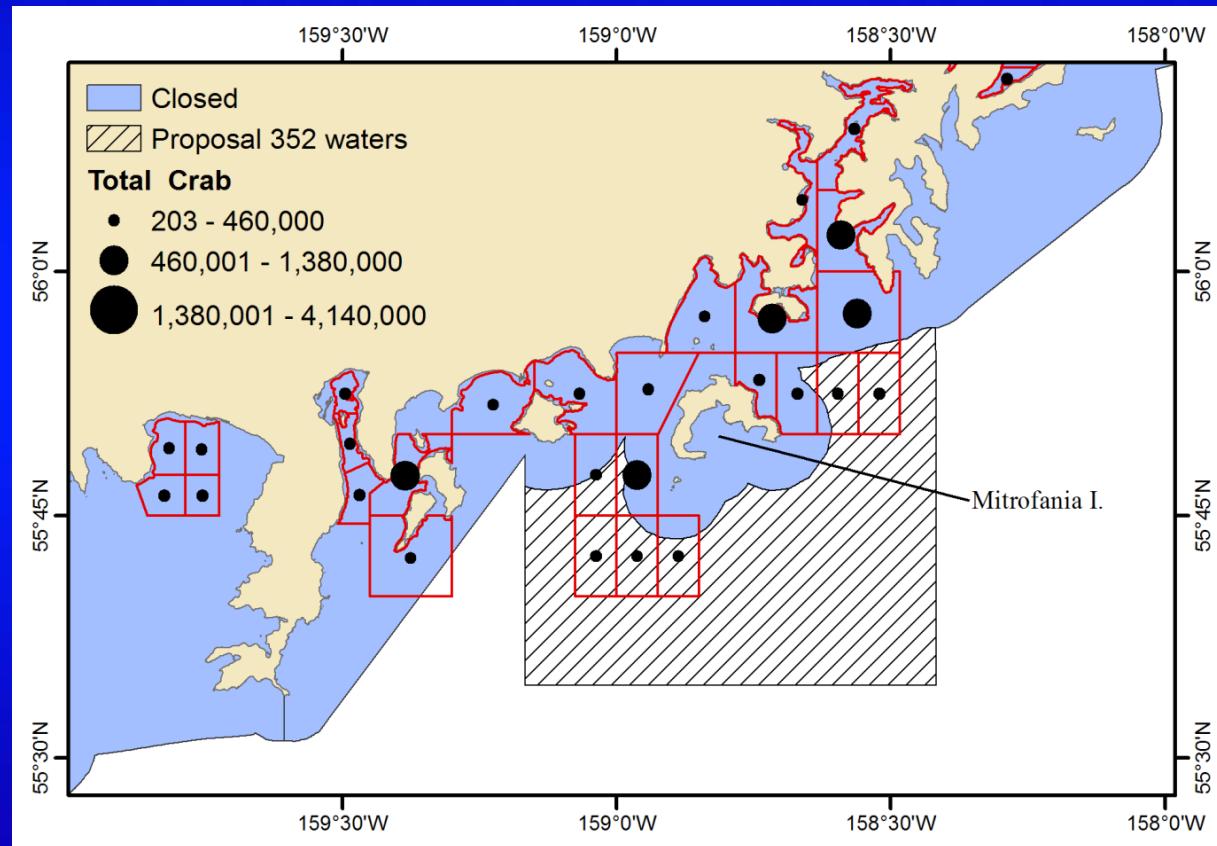
Proposal 352 – Scallop Closed Waters



Area closed in 1984 to protect declining king and Tanner crab stocks

If Adopted

- May provide additional scallop fishing opportunity
- No scallop stock data
- High Tanner crab bycatch
40 percent of all Tanner crab harvested during 2011 and 2012 Tanner seasons occurred in proposed area



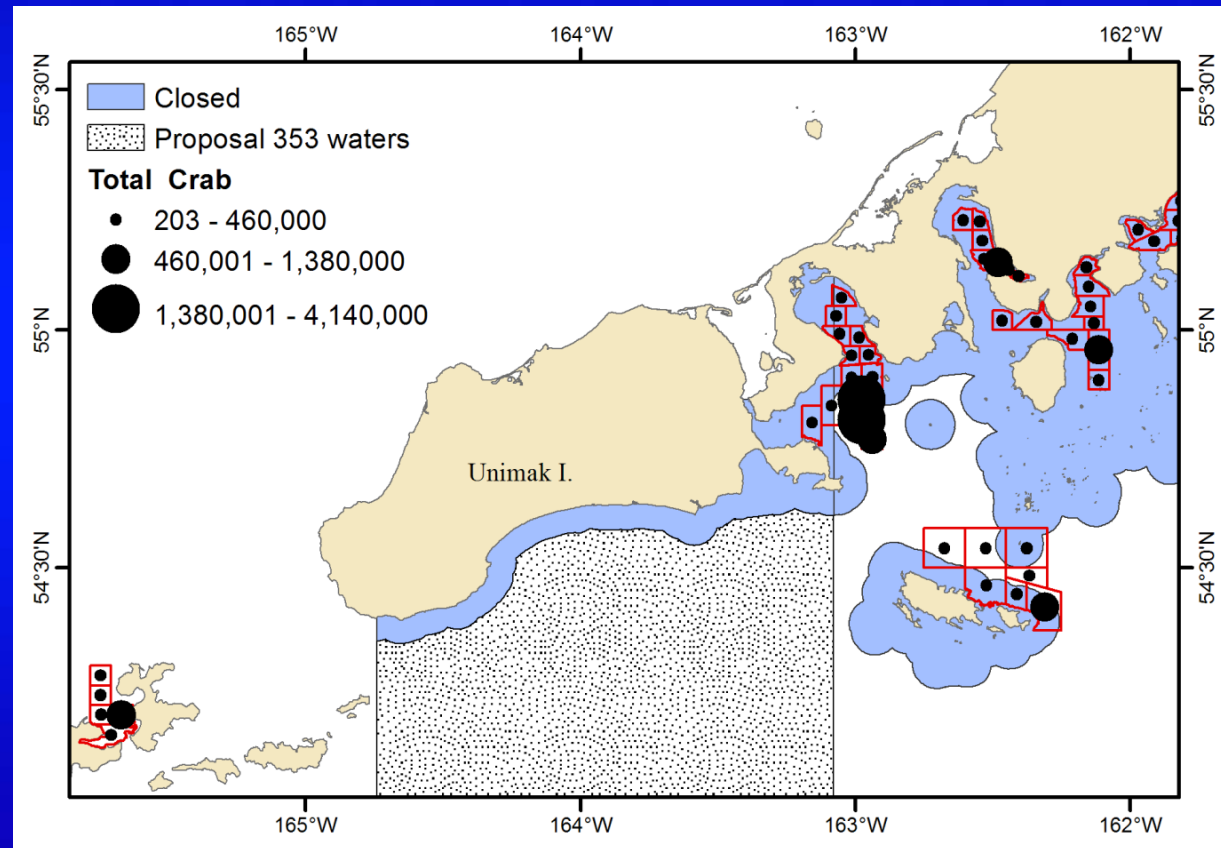
Proposal 353 – Scallop Closed Waters



Area closed in 1975 to protect declining king and Tanner crab stocks

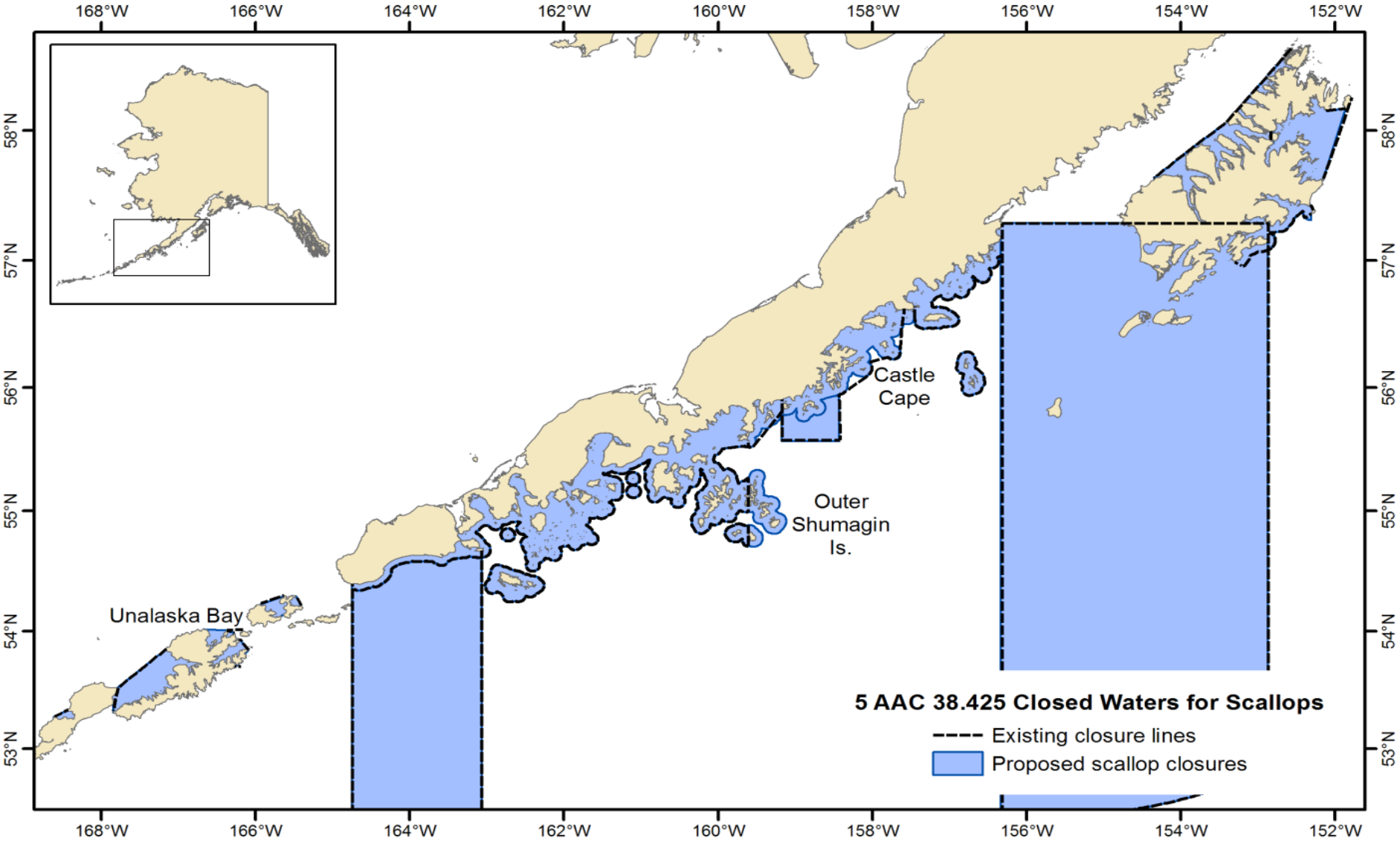
If Adopted

- May provide additional scallop fishing opportunity
- No scallop stock data
- Limited king and Tanner crab stock data



Proposal 354 – Scallop Closed Waters

Update historical scallop boundary coordinates





SHRIMP PROPOSALS

- **PROPOSAL 356** – Align shrimp pot fishery season dates with harvest caps (**SUPPORT**).
- **PROPOSAL 357** – Clarify shrimp boundary line descriptions (**SUPPORT**).



Proposal 356 – Shrimp Season Dates



Align shrimp harvest caps with fishery season dates in the North Afognak, West Afognak, and Mainland Sections of the Kodiak District

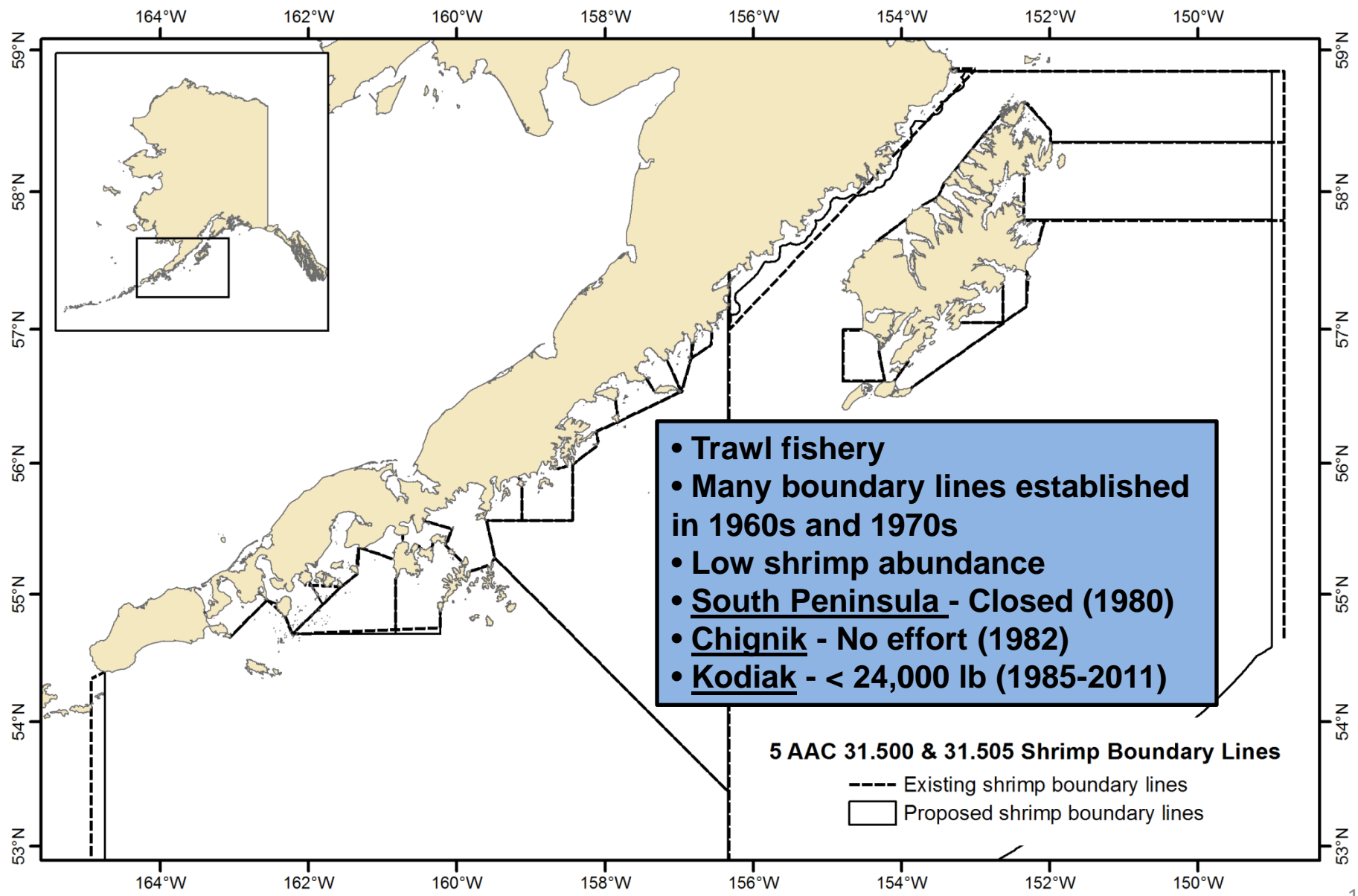
- Pot fishery
- Fishing season: May 1 – February 28
- GHR = Capped at 40,000 lb
- No more than 15,000 lb taken from a section per calendar year
- Prevent excessive harvest

Year	Vessels	Landings	Whole Pounds
1980	4	22	4,485
1981	4	7	2,919
1982	6	18	9,754
1983	12	31	18,686
1984	6	21	4,361
1985 – 1989	4	24	8,484
1990 – 1999	4	5	515
2000 – 2011	3	18	3,401



Proposal 357 – Shrimp Boundary Lines

Update historical shrimp boundary coordinates



Questions?

