

SHELLFISH REGULATIONS

SPORT AND PERSONAL USE SOUTHEAST ALASKA



License Requirements: A valid Alaska sport fishing license is required to take shellfish under personal use and sport regulations. Alaska residents 60 years or older with an ADF&G permanent ID card, residents under 18, and nonresidents under 16 years of age are exempt from these license requirements. **Alaska residents can** harvest shellfish under sport, personal use, or subsistence regulations and **nonresidents** must harvest shellfish under sport regulations.

Please note that this summary does not include subsistence regulations.

Seasons: Fishing for shellfish is open year-round except:

• **Tanner crab:**

- **June 16-June 30: Closed to sport and personal use fishing for Tanner crab**, except in the Yakutat area (Cape Suckling to Cape Fairweather) where there is no closed season for Alaska residents under personal use regulations.

• **King crab:**

- Open to residents only under personal use regulations. Check for emergency orders and/or permits with the nearest ADF&G office.

Combining Limits: Harvest, bag, possession, and pot limits for shellfish may not be added to those allowed for other fisheries (i.e. anglers may not combine gear or harvests from multiple fisheries to exceed applicable limits).

Disfiguring of Crab: Until a crab has been processed or prepared for human consumption, no one may mutilate or otherwise disfigure it in any manner that prevents determination of whether it meets the minimum size limit.

Disturbing Other Angler's Pots: Anglers may not disturb, tamper with, or pull another angler's pots without prior permission of the pots' owner.

Fishing From a Commercial Vessel: When fishing for personal use or sport shellfish from a commercially licensed vessel, special provisions may apply. This can include a prohibition from fishing for personal use or sport shellfish fisheries immediately before, during, or immediately after a commercial shellfish fishery. Please contact the local ADF&G Division of Commercial Fisheries for more information.

Furnishing Shellfish to Clients or Guests: An owner, operator, or employee of a lodge, charter vessel, or other enterprise that furnishes food, lodging, or guide services may not furnish a client or guest of that enterprise shellfish, unless: (1) the shellfish has been taken with gear deployed and retrieved by the client or guest; (2) the gear has been marked with the client or guest's name and address, as specified on page 34; and (3) the shellfish is to be consumed by the client or guest or is consumed in the presence of the client or guest.

Legal Crab: Only male crab may be retained. Male crab less than the minimum size limit and all female crab may not be possessed and must be returned unharmed to the water immediately (see page 36).

Live Holding Facilities: Live holding facilities used to pool multiple bag limits of crab by one or more persons are not allowed.

Operators and Crew of a Charter Vessel: A captain and crew of a charter vessel may not deploy, set, or retrieve their own gear in a shellfish fishery when that vessel is being chartered.

Permit for Shrimp: Anglers are required to obtain a free permit to harvest shrimp. Permits are available online at <https://store.adfg.alaska.gov> or at ADF&G offices.

- Nonresidents should obtain the Sport Shrimp permit.
- Residents should obtain the Personal Use/ Subsistence Shrimp permit.

Possession Limit: For all shellfish species in Southeast Alaska, the possession limit equals one daily bag limit.

Sale of Shellfish: It is unlawful to buy, sell, trade, or barter shellfish, their parts, or eggs caught under personal use or sport fishing regulations.

ALLOWABLE GEAR

Abalone may be taken by abalone irons, diving gear (except SCUBA and hookah gear, which are prohibited), or by hand.

Clams may be taken by rakes, shovels, hand, or manually operated clam guns. Geoducks may also be taken by residents using a hydraulic clam digger.

Crab may be taken by pots, ring nets, diving gear, hand, dip nets, and hooked or hookless hand lines.

Other Shellfish may be taken by hook and line in addition to all other gear listed above. Alaska residents may use trawls, hand jigging, and hand-operated dredges under personal use regulations.

Scallops may be taken by diving gear, dip nets, or by hand. Residents may use abalone irons under personal use regulations.

Shrimp may be taken by pots, ring nets, and trawls (trawls may be operated only by Alaska residents under personal use regulations and require a permit).

Squid may be taken with the use of not more than two squid jigs attached to a single line. See page 47 for definition of squid jig. Standard sport fishing gear described on page 7 may also be used.

SHELLFISH REGULATIONS



POT REQUIREMENTS SOUTHEAST ALASKA



ESCAPE RINGS: Each pot used to take Dungeness, Tanner, or king crab must have a minimum of two escape rings on opposite sides of the pot. Escape rings on Dungeness crab pots must be on the upper half of the vertical plane of the pot.

- **Dungeness crab escape rings:** 4 $\frac{3}{8}$ inches minimum inside diameter.
- **Tanner crab escape rings:** 4 $\frac{3}{4}$ inches minimum inside diameter.
- **King crab escape rings:** 6 $\frac{1}{4}$ inches minimum inside diameter.

ESCAPE MECHANISM: A biodegradable escape mechanism is required for crab and shrimp pots. Required escape mechanisms vary by pot construction and are divided into two categories: non-rigid mesh pots and rigid mesh pots.

BUOY MARKINGS: Shellfish pot and ring buoys must be marked with:

- Angler's first initial and last name;
- Home address; and
- The Division of Motor Vehicles registration number (AK number) of the vessel used to operate the pot or the vessel name.

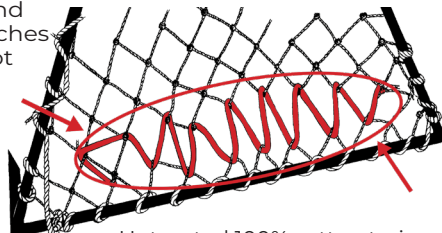
SHRIMP POT SIZE REQUIREMENTS: Any pot used to take shrimp may not have more than 4 tunnel eye openings, may not have a bottom perimeter greater than 153 inches, and may not exceed a volume of 25 cubic feet. No tunnel eye opening may exceed 15 inches in perimeter.

NON-RIGID MESH POTS

Pot sidewalls, which may include the tunnel sidewalls, must contain an opening that is laced, sewn, or secured together by a single length of untreated, 100% cotton twine, no larger than 30-thread. The cotton twine may be knotted at each end only. The opening must be within six inches of the bottom of the pot and must be parallel with it. The cotton twine may not be tied or looped around the web bars. The opening must be equal to or exceeding the following lengths listed by species.

- **Dungeness:** Opening is a minimum of 18 inches long. Or, as a substitute, the pot lid tie-down straps may be secured to the pot at one end by a single loop of untreated, 100% cotton twine, no larger than 60-thread. The pot lid must be secured so that when the twine degrades, the lid will no longer be securely closed.
- **King and Tanner:** Opening is a minimum of 18 inches long.
- **Shrimp:** Opening is a minimum of 6 inches long.

Opening at least 18 inches long (6 inches for shrimp pots) and no more than 6 inches from bottom of pot and parallel to it.

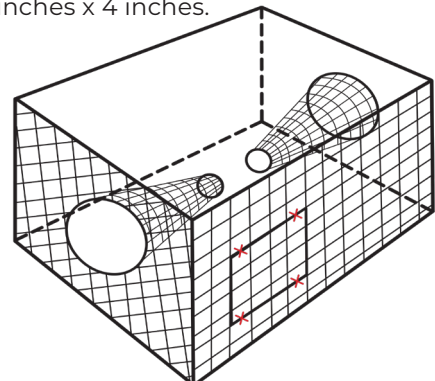


Untreated 100% cotton twine, no larger than 30-thread.

RIGID MESH POTS

Must have at least one rectangular opening in a sidewall of the pot which may include a side of the tunnel. The lower long edge of the opening must be parallel to and within six inches of the bottom of the pot. The opening may be covered with a single panel secured to the pot with no more than four single loops of untreated, 100% cotton twine, no larger than 30-thread; each single loop of cotton twine may not be laced along the opening. The panel must be attached to the pot in a manner that when the cotton twine degrades, the panel will drop away from the pot exposing the opening completely. The panel must be equal to or exceeding the dimensions listed below.

- **Dungeness:** 10 inches x 6 inches or, as a substitute, the pot lid tie-down straps may be secured to the pot at one end by a single loop of untreated, 100% cotton twine, no larger than 60-thread. The pot lid must be secured so that when the twine degrades, the lid will no longer be securely closed.
- **King and Tanner:** 12 inches x 8 inches.
- **Shrimp:** 4 inches x 4 inches.



CAUTION! PARALYTIC SHELLFISH POISONING HAS OCCURRED ON SOME ALASKAN BEACHES.

For more information, please contact (907) 269-7638 or check the State of Alaska Department of Environmental Conservation's Seafood and Shellfish webpage at <https://health.alaska.gov/dph/epi/id/pages/dod/psp/default.aspx>.

SHELLFISH REGULATIONS



POT REQUIREMENTS SOUTHEAST ALASKA



ALASKA RESIDENTS PERSONAL USE SHELLFISH REGULATIONS

CRAB

- **Dungeness Crab:** 20 males, 6½ inches minimum size, except in the waters of Thorne Bay west of the longitude of the southernmost tip of Thorne Head, the daily bag and possession limit is 5 male Dungeness crab, 6½ inches minimum size.
 - **In the Yakutat area (Cape Suckling to Cape Fairweather): Closed year-round.**
- **King Crab:** Check for emergency order and/or permits with the nearest ADF&G office.
- **Tanner Crab:** 30 males, 5½ inches minimum size.

SHRIMP

- **Shrimp:** A permit is required.
 - No bag, possession, or size restrictions except in the District 13 Sitka Area where the bag and possession limit of spot shrimp is 10 gallons (whole or deheaded).
 - **In 2024, the personal use shrimp fishery is closed in the vicinity of Juneau, Tenakee Inlet, and Hoonah Sound by emergency order. Please see the personal use shrimp permit or the emergency order for more information.**

OTHER SHELLFISH

- **Abalone:** 5 abalone, 3½ inches minimum size.
- **Geoducks:** 6 geoducks.
- **Razor Clams:** No bag, possession, or size restrictions, except Sitka Sound where razor clams may not be retained and the waters of western Kruzof Island beaches between Cape Edgecumbe and Cape Georgiana, where the bag and possession limit is 50 clams.
- **Scallops:** 5 rock scallops (*Hinnites sp.*) and 10 weathervane scallops (*Pecten sp.*), except in the Yakutat Area (between the longitude of Cape Suckling and Cape Fairweather) where the limit is 50 weathervane scallops. There are no limits for all other scallops.
- **Other Shellfish Species Not Listed Above:** No bag, possession, or size restrictions.

NUMBER OF POTS & RINGS ALLOWED FOR RESIDENTS

DUNGENESS, KING, AND TANNER CRAB

- While taking Dungeness crab, 5 pots OR 10 ring nets per person may be used, with a maximum of 10 pots OR 20 ring nets per vessel.
- While taking Tanner or king crab, no more than 4 pots OR 10 ring nets per vessel may be used (except 20 ring nets per vessel may be used in the Yakutat area).
- In the Juneau area, shellfish gear limits are established by emergency order. Please check with your local ADF&G office for this information.
- In total, no more than 5 pots per person and 10 pots per vessel may be used for taking crab regardless of pot type.

SHRIMP

- In addition to crab pots, 10 shrimp pots per person with a maximum of 20 pots per vessel may be used. Shrimp pots may be longlined.

NONRESIDENTS SPORT SHELLFISH REGULATIONS

CRAB

- **King Crab:** Closed to sport fishing.
- **Tanner and Dungeness Crab:**
 - **In combination:** 3 males.
 - **Tanner Crab:** 5½ inches minimum size.
 - **Dungeness Crab:** 6½ inches minimum size.
 - **Areas closed to the taking of Dungeness crab:**
 - Yakutat area (Cape Suckling to Cape Fairweather). See page 15.
 - Prince of Wales: Klawock/Shinaku Inlets, Coffman Cove, and Whale Pass. See page 29.

SHRIMP

- **Shrimp:** A permit is required. 3 pounds or quarts (whole or deheaded), no size restrictions.
 - **Areas closed to the taking of shrimp:**
 - Ketchikan: East of a line from Indian Point to the northeastern most tip of Betton Island to Survey Point. See page 32.
 - Prince of Wales: Twelve-Mile Arm. See page 29.
 - Sitka Sound Special Use Area: See page 24.
 - **In 2024, the sport shrimp fishery is closed in the vicinity of Juneau, Tenakee Inlet, and Hoonah Sound by emergency order. Please see the shrimp permit or the emergency order for more information.**

OTHER SHELLFISH

- **Abalone:** Closed year-round.
- **Geoducks:** Closed year-round.
- **Razor Clams:** 10 razor clams, except Sitka Sound where razor clams may not be retained.
- **Scallops:** 5 rock scallops (*Hinnites sp.*) and 10 weathervane scallops (*Pecten sp.*). There are no limits for all other scallops.
- **Other Shellfish Species Not Listed Above:** No bag, possession, or size restrictions.

NUMBER OF POTS & RINGS ALLOWED FOR NONRESIDENTS

DUNGENESS AND TANNER CRAB

- While taking Dungeness crab, 4 crab pots OR 10 ring nets per person may be used, with a maximum of 10 crab pots OR 20 ring nets per vessel.
- While taking Tanner crab, no more than 4 crab pots OR 10 ring nets per vessel may be used.
- In total, no more than 4 pots per person and 10 pots per vessel may be used for taking shellfish regardless of pot type.

SHRIMP

- In addition to crab pots, 5 shrimp pots per person with a maximum of 10 pots per vessel may be used. Shrimp pots may NOT be longlined.

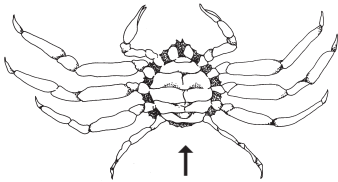
SHELLFISH REGULATIONS

CRAB ID AND MEASUREMENTS

TANNER CRAB

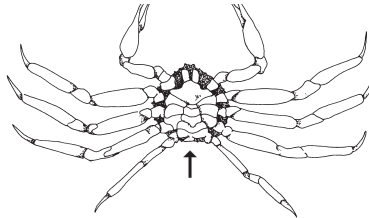
Minimum size 5½ inches

FEMALE NO HARVEST ALLOWED

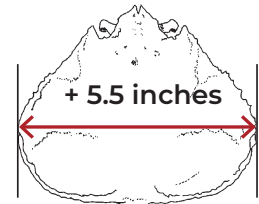


Wide abdominal flap covers most of underside (females usually smaller than 5½ inches)

MALE



Narrow abdominal flap

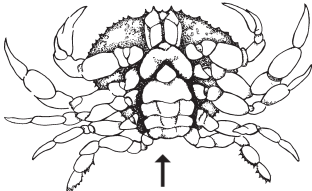


Width measurement of Tanner crab is the straight-line distance across the carapace, **including** spines.

DUNGENESS CRAB

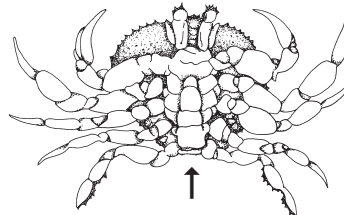
Minimum size 6½ inches

FEMALE NO HARVEST ALLOWED

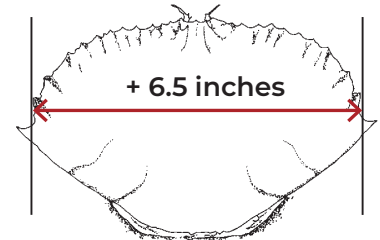


Wide abdominal flap covers most of underside

MALE



Narrow abdominal flap

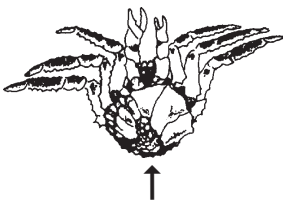


Width measurement of Dungeness crab is the straight-line distance across the carapace, **NOT** including spines.

KING CRAB

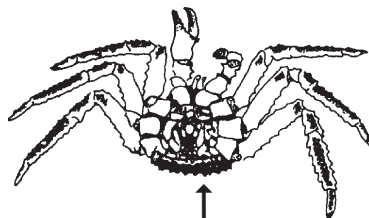
Minimum size 7 inches

FEMALE NO HARVEST ALLOWED



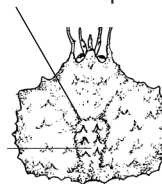
Wide abdominal flap covers most of underside

MALE



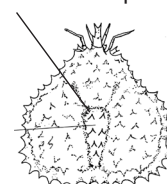
Narrow abdominal flap

6 prominent spines on mid-dorsal plate



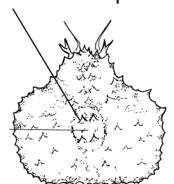
**RED
KING CRAB**

5 to 9 spines on mid-dorsal plate



**BROWN
KING CRAB**

4 prominent spines on mid-dorsal plate



**BLUE
KING CRAB**