

GENERAL REGULATIONS - COOK INLET AND KACHEMAK BAY

Inclusive waters: Salt waters of Cook Inlet west of Gore Point and north of Cape Douglas, including Kachemak Bay and the Barren Islands.

Fishing is open year-round for all species unless otherwise noted below or in special regulations.

Check for emergency orders online at www.adfg.alaska.gov/sf/EONR prior to fishing.

KING SALMON

- **Summer Fisheries (April 1-August 31):**
 - 20 inches or longer:
 - There is a combined annual limit of 5 king salmon 20 inches or longer from the waters of the following areas: Cook Inlet Salt Waters, West Cook Inlet, Susitna River Drainage, Knik Arm, Anchorage Bowl, and Kenai Peninsula.
 - If you retain a king salmon 20 inches or longer, you must immediately record that harvest. See page 5 for recording instructions.
 - A king salmon 20 inches or longer that is removed from salt water must be retained and becomes part of the bag limit of the person who originally hooked the fish. You must not remove a king salmon 20 inches or longer from the water before releasing it.
- **North of the latitude of Bluff Point (59°40' N):**
 - See Special King Salmon Management regulations on page 69.
 - **April 1-June 19: Please check emergency orders for king salmon closures or contact the local ADF&G office for more info.**
 - **June 20-August 15: Closed to king salmon fishing. This restriction will be in place annually until the Kenai River late-run king salmon meets the recovery goal outlined in the action plan established by the BOF.**
 - **April 1-June 19:** 1 per day, 1 in possession (of any size).
- **South of the latitude of Bluff Point (59°40' N):**
 - **Please check emergency orders for king salmon closures or contact the local ADF&G office for more info.**
 - 2 per day, 2 in possession (of any size).
- **Winter Fishery (September 1-March 31):**
 - **All Cook Inlet and Kachemak Bay salt waters:**
 - 2 per day, 2 in possession (of any size).
 - No annual limit in effect; recording of king salmon harvest is not required during this time, but a king stamp is required.

RAINBOW/STEELHEAD TROUT

- Catch-and-release fishing only. All rainbow/steelhead trout caught must be released immediately.

OTHER SALMON

- 6 per day, 6 in possession, only 3 per day, 3 in possession may be coho salmon.
- Pink salmon taken in a sport fishery may be used as bait, but are part of your bag limit.

DOLLY VARDEN

- 5 per day, 5 in possession.

SPINY DOGFISH

- 5 per day, 5 in possession.

LINGCOD

July 1-December 31: 1 per day, 1 in possession, must be at least 35 inches long with head attached or 28 inches from tip of tail to front of dorsal fin with head removed.

ROCKFISH

3 per day, 6 in possession, only 1 per day, 2 in possession may be nonpelagic (see the chart on page 90).

As of January 1, 2020, anglers must carry a deepwater release device onboard their vessel and have it readily available when sport fishing in salt water and will be required to use the device to release rockfish that are not harvested at depth of capture or 100 feet. For more information on deepwater release devices, see page 91.

Examples of Rockfish Release Devices



HALIBUT

Pacific halibut fisheries are managed by the federal government under international treaty. See page 7 for federal contact information.

- **Season: February 1-December 31.**
- **Unguided anglers:** 2 per day, 4 in possession.
- **Consult federal regulations for the following:**
 - Bag, possession and size limits, and other regulations for guided (charter) anglers.
- **Filleting requirements for fish cleaned at sea:**
 - No person shall possess on board a vessel, including charter vessels and pleasure craft used for fishing, Pacific halibut that have been filleted, mutilated, or otherwise disfigured in any manner, except that each Pacific halibut may be cut into no more than 2 ventral pieces, 2 dorsal pieces, and 2 cheek pieces, with a patch of skin on each piece, naturally attached.

SHARKS (EXCEPT SPINY DOGFISH)

- 1 per day, 1 in possession. There is an annual limit of 2 sharks. Any shark harvested must be recorded. See page 5 for recording instructions.

OTHER FINFISH

- No limit.

SHELLFISH

- See page 70.

METHODS AND MEANS - COOK INLET AND KACHEMAK BAY

UNDERWATER SPEAR:

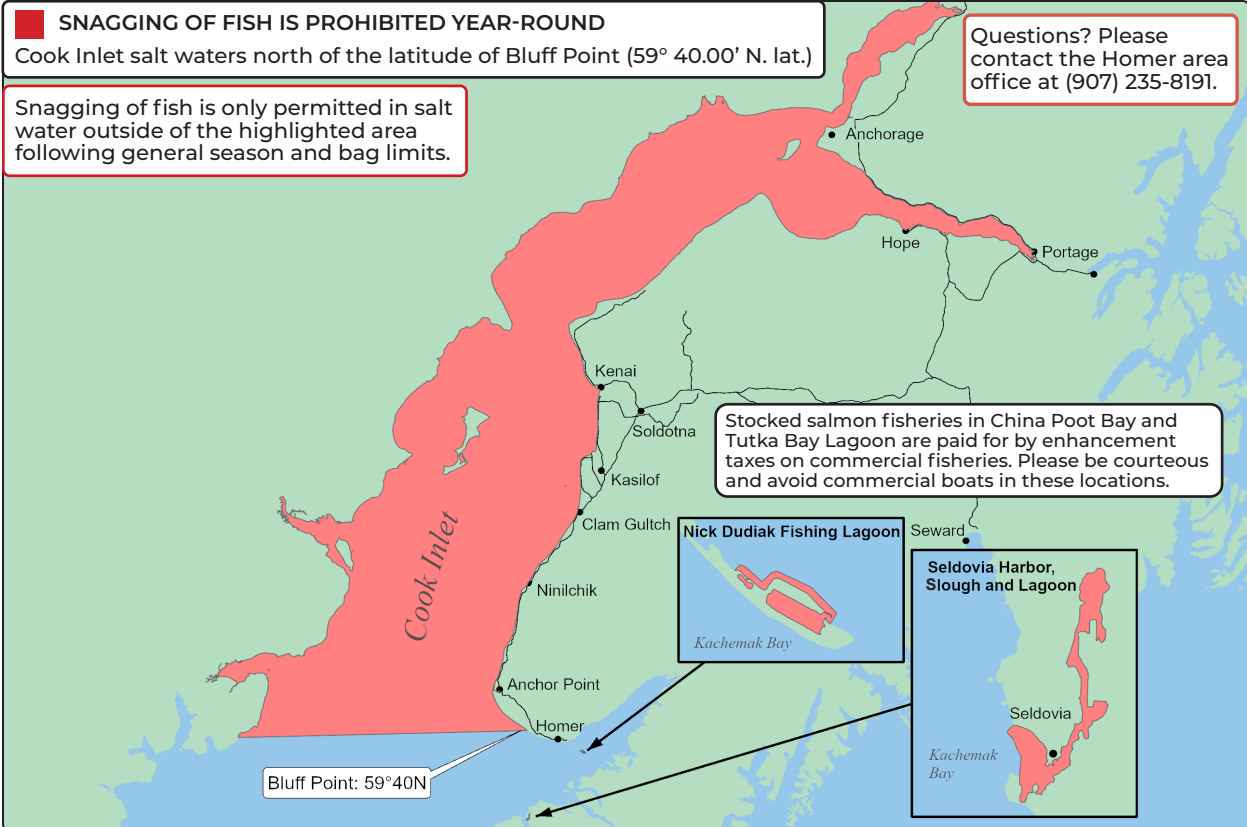
In salt water, spears and spearguns may be used to take fish, subject to applicable seasons and bag limits, by persons who are completely submerged or while swimming on the surface, provided the spear or speargun is not tipped with an explosive charge.

SPORT FISHING GEAR FOR HERRING & HOOLIGAN:

- In salt water, herring and smelt may be taken with the use of 15 or fewer unbaited, single or multiple hooks attached to a single line.

GAFFS:

- A gaff may not be used to puncture any fish intended or required to be released.



METHODS AND MEANS - COOK INLET AND KACHEMAK BAY (CONT.)

SNAGGING:

- **Snagging is prohibited. You may not intentionally snag or attempt to snag any species of fish:**
 - Year-round in Cook Inlet north of a line extending west from Bluff Point. Year-round in the Nick Dudiak Fishing Lagoon (see special regulations below).

January 1-June 23: In the Seldovia Harbor, Slough, and Lagoon.

- **Snagging is Allowed:**
 - Year-round in Cook Inlet south of a line extending west from the latitude of Bluff Point (except for the Nick Dudiak Fishing Lagoon).

SPECIAL REGULATIONS - COOK INLET AND KACHEMAK BAY

FISH CREEK:

- See page 35.

NICK DUDIAK FISHING LAGOON AREA (THE FISHING HOLE)

- Along the east side of the Homer Spit, from the Homer City Dock near the entrance of the Homer Boat Harbor to ADF&G markers about 200 yards northwest of the entrance to the Nick Dudiak Fishing Lagoon area (including the Homer Boat Harbor and the fishing lagoon) to a distance of 300 feet from shore:

- King salmon:
 - 2 per day, 2 in possession, no size limit.
 - **April 1-August 31:** king salmon 20 inches or longer must be recorded (see page 5).

Nick Dudiak Fishing Lagoon continued...

- Other salmon (including coho salmon) in combination:
 - 6 per day, 6 in possession.
- **Snagging is only allowed by emergency order.**
- Weights, bobbers, or any flotation device (including pieces of foam or marshmallows) following a hook or hooks may not be used when these waters are closed to snagging.



NICK DUDIAK LAGOON YOUTH-ONLY KING AND COHO SALMON FISHERIES:

- Youth-Only Fishery area is only for anglers 15 years of age or younger and is marked with signs.
- The Youth-Only Fishery is on the first Saturday in June and August. In 2024, this will be June 1 and August 3.

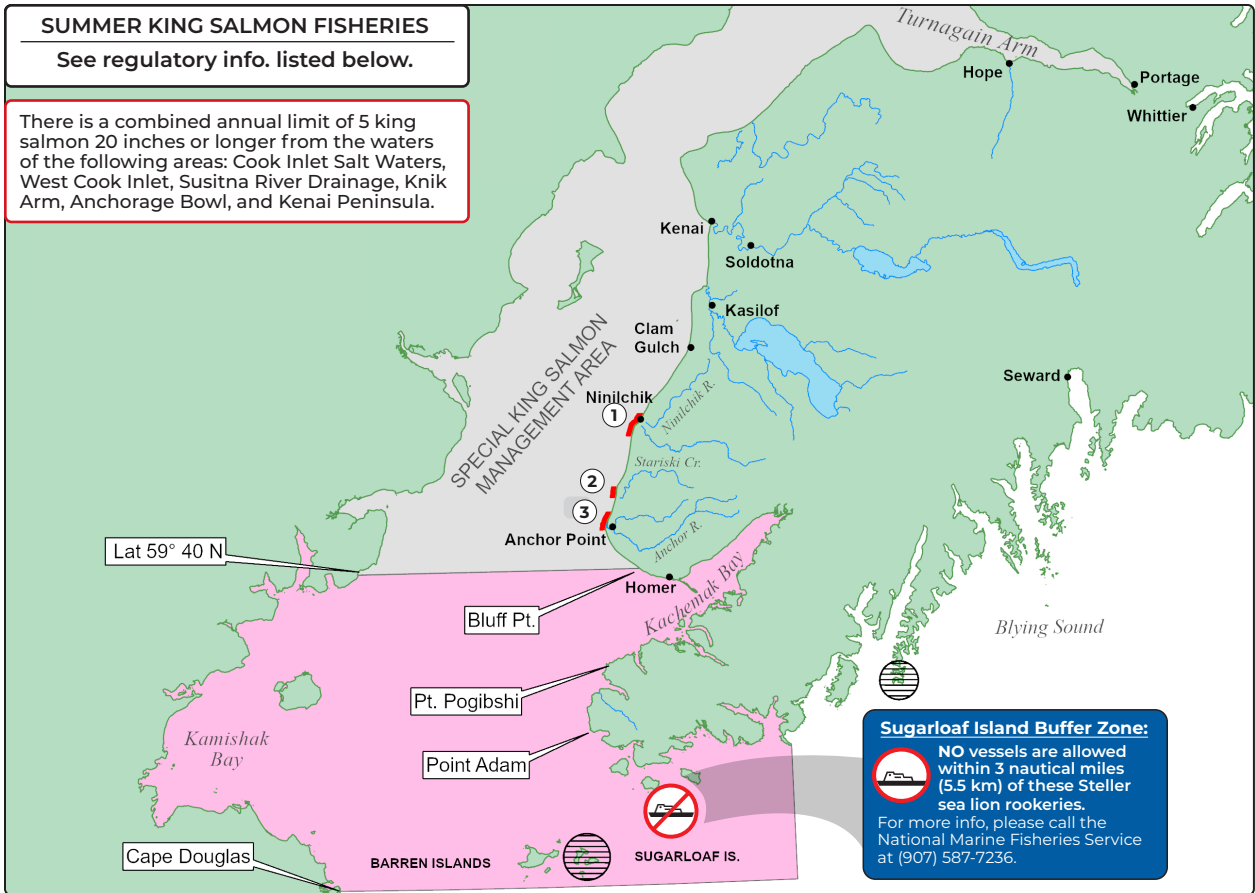
HOMER BARGE BASIN - located on the Homer Spit: **Closed year-round to all sport fishing.**

SELDOVIA HARBOR, SLOUGH AND LAGOON:

- **January 1-June 23:** Closed to snagging and spear fishing.
- **King salmon:** 2 per day, 2 in possession, no size limit.
- **April 1-August 31:** King salmon 20 inches or longer must be recorded (see page 5).
- **All other species:** See page 67.

TUTKA BAY LAGOON:

- The marine waters of Tutka Bay Lagoon within 100 yards of the Tutka Bay Lagoon hatchery net pens: **Closed year-round to sport fishing for all species.**



Sugarloaf Island Buffer Zone:
 NO vessels are allowed within 3 nautical miles (5.5 km) of these Steller sea lion rookeries.
 For more info, please call the National Marine Fisheries Service at (907) 587-7236.

REGULATIONS FOR SPECIAL KING SALMON MANAGEMENT AREA (APRIL 1-AUGUST 31)

Inclusive waters: All salt waters north of the latitude of Bluff Point.

- **April 1-August 31:** The following regulations apply:
 - Anglers may not continue fishing for king salmon within the Special King Salmon Management Area after harvesting a king salmon 20 inches or longer.
 - Guides may not sport fish while a client is present or within the guide's control or responsibility, unless the guide is providing assistance to a client with a disability as defined in the Americans with Disabilities Act.
 - **April 1-July 15:** The following salt water areas ①, ②, and ③ surrounding stream mouths are Conservation Zones and are **closed to all sport fishing from a boat. Sport fishing for all species other than king salmon is allowed from shore except within 200 yards of stream mouths.**
- ① About 1 mile north of the Ninilchik River (60°03.99'N) to ADF&G markers 2 miles south of Deep Creek (60°00.68'N), and within 1 mile of shore.
- ② From the latitude of an ADF&G marker located 1 mile north of Stariski Creek (59°54.37'N) to the latitude of an ADF&G marker located 1 mile south of Stariski Creek (59°52.98'N), and within 1 mile of shore; and
- ③ From the latitude of ADF&G markers 2 miles north of the Anchor River (59°48.92'N) to the latitude of the Anchor Point Light (59°46.14'N) about 1 3/4 miles south of the Anchor River, and within 1 mile of shore.

SUMMER KING SALMON FISHERY - April 1-August 31:

- King salmon: **Please check emergency orders for king salmon closures or contact the local ADF&G office for more info.**
- **North of Bluff Point 59°40'N to 60°03.99'N (Special King Salmon Management Area):**
 - See page 67 for bag limits. Note: See special regulations above.
- **South of Bluff Point (59°40'N) to 60°03.99'N:**
 - See page 67 for bag limits.

WINTER KING SALMON FISHERY - September 1-March 31:

- **Inclusive waters:** ALL of Cook Inlet and Kachemak Bay salt waters.
- King salmon:
 - 2 per day, 2 in possession (any size).
 - **September 1-March 31:** No annual limit in effect. Harvest of king salmon does not need to be recorded in this area during this time, but a king stamp is required.

...continued

TANNER CRAB LIMITED FISHERY

COOK INLET AND NORTH GULF COAST WATERS

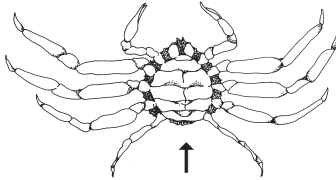
- A permit is required and is available online at <https://store.adfg.alaska.gov>
- **Only whole crab, cooked or uncooked, may be taken off a vessel.**
- See the permit for additional stipulations.
- See page 84 for gear and other requirements.
- See page 10 for charter vessel regulations.
- **Season: October 1-February 28.**
 - Male crabs only, 4½ inch minimum, 3 per day, 3 in possession.
 - May operate 1 pot or one ring net per vessel.

Tanner crab permits must be reported online at <https://harvest.adfg.alaska.gov>.

There is an annual limit of 20 crabs per person.

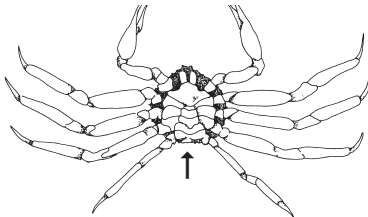


FEMALE NO HARVEST ALLOWED



Wide abdominal flap covers most of underside (females are usually smaller than legal size)

MALE

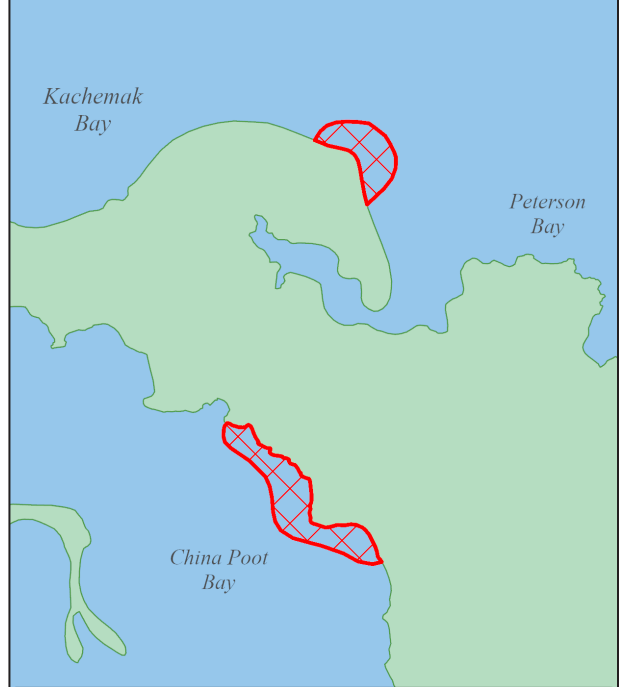


Narrow abdominal flap



Width measurement of Tanner crab is the straight-line distance across the carapace, **including** spines.

CHINA POOT AND PETERSON BAY



Areas closed to the harvest of all shellfish

OTHER SHELLFISH

CHINA POOT AND PETERSON BAY (KACHEMAK BAY):

- Intertidal beaches between ADF&G markers along Shipwreck Cove and around Otter Rock:
 - **Closed to the harvest of all shellfish.**

DUNGENESS CRAB

- Season: **Closed.**

KING CRAB

- Season: **Closed.**

LITTLENECK AND BUTTER CLAMS

- Season: **Closed.**

RAZOR CLAMS

- **Check for emergency orders online at www.adfg.alaska.gov/sf/EONR prior to heading out to go clamming.**
- East side Cook Inlet beaches from the mouth of the Kenai River south to the tip of the Homer Spit:
 - **Closed to all clamming.**
- Rest of Cook Inlet:
 - 10 gallons per day and 10 gallons in possession.
 - All razor clams dug must be retained.

SHRIMP

- Season: **Closed.**

OTHER SHELLFISH

- No limit.