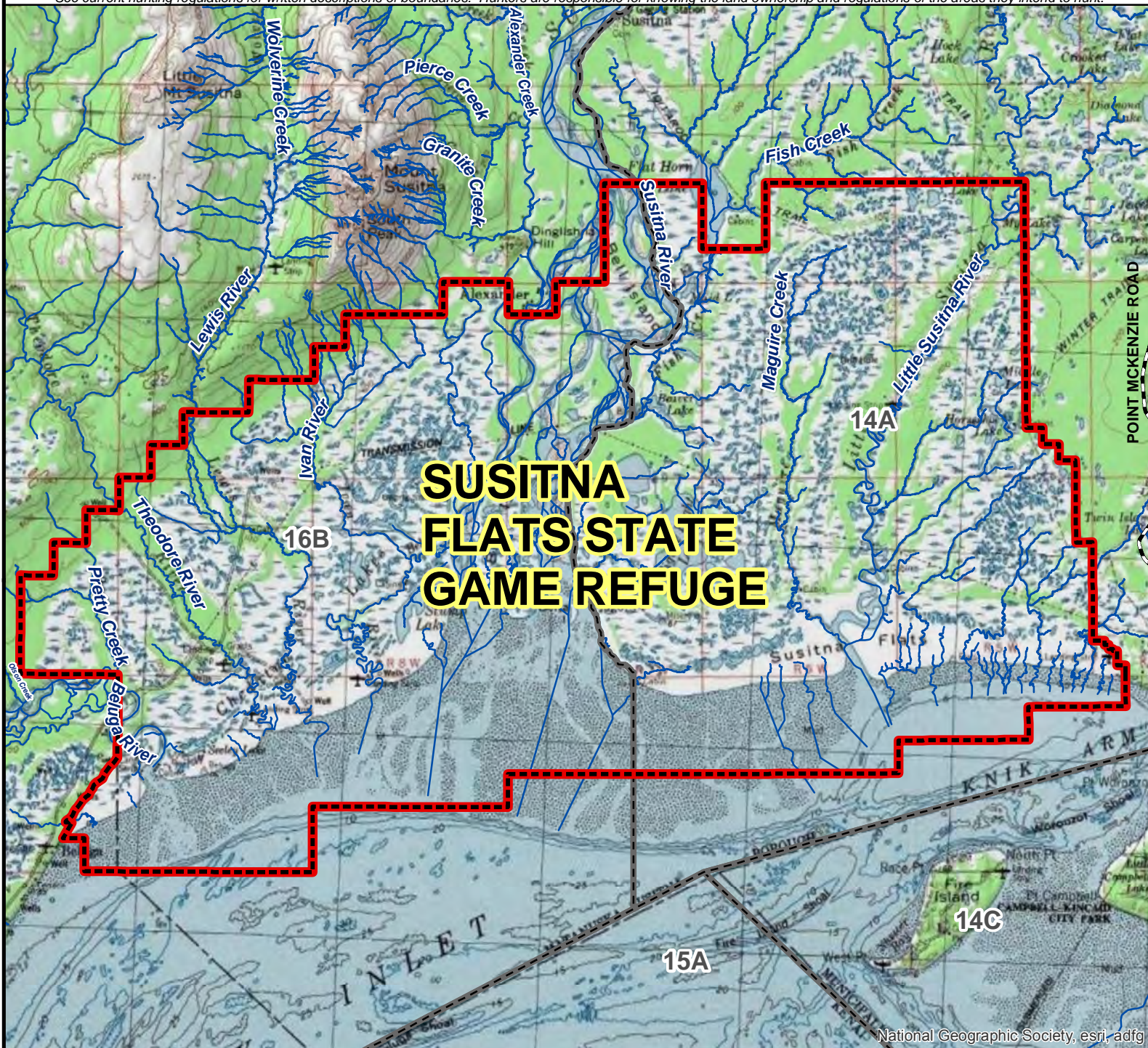


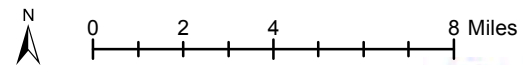
Units 14A and 16B Susitna Flats State Game Refuge

This map is intended for hunt planning use, not for determining legal property or regulatory boundaries. Content is compiled from various sources and is subject to change without notice. See current hunting regulations for written descriptions of boundaries. Hunters are responsible for knowing the land ownership and regulations of the areas they intend to hunt.



National Geographic Society, esri, adfg

AREA DESCRIPTION: Units 14A and 16B, Susitna Flats State Game Refuge has restrictions regarding use of motorized vehicles and aircraft (for details, see refuge General Permit requirements at <http://www.adfg.alaska.gov/index.cfm?adfg=uselicense.gpareas> or call (907) 861-3200, (907) 861-2112): a) Refuge Lands: the use off-road vehicles are prohibited except that those weighing less than 1,000 lbs. GVW (including ATVs and snow machines) may be used on refuge lands Nov 9 – Mar 31 provided there is at least a 12-inch snow cover and sufficient ground frost to prevent penetration of or disturbance to the soil surface or plant roots. If operating on frozen waterways the ice cover must be of sufficient thickness to support the weight-bearing load of the off-road vehicle. If operating on the Enstar Gas Pipeline right-of-way, or the marked trails to Figure Eight Lake or Flat Horn Lake, the 12-inch snow cover requirement is waived but there must be sufficient ground frost to prevent penetration of or disturbance to the soil surface or plant roots. b) Aircraft: Landing is prohibited Apr 1 – May 15 in the High Density Spring Waterfowl Staging Area (defined roughly as the coastal marsh seaward of the forested bluff edge).



- State Game Refuge
- Subunit Boundary
- National Park/Monument
- National Wildlife Refuge
- Military Closure
- Other State Areas

