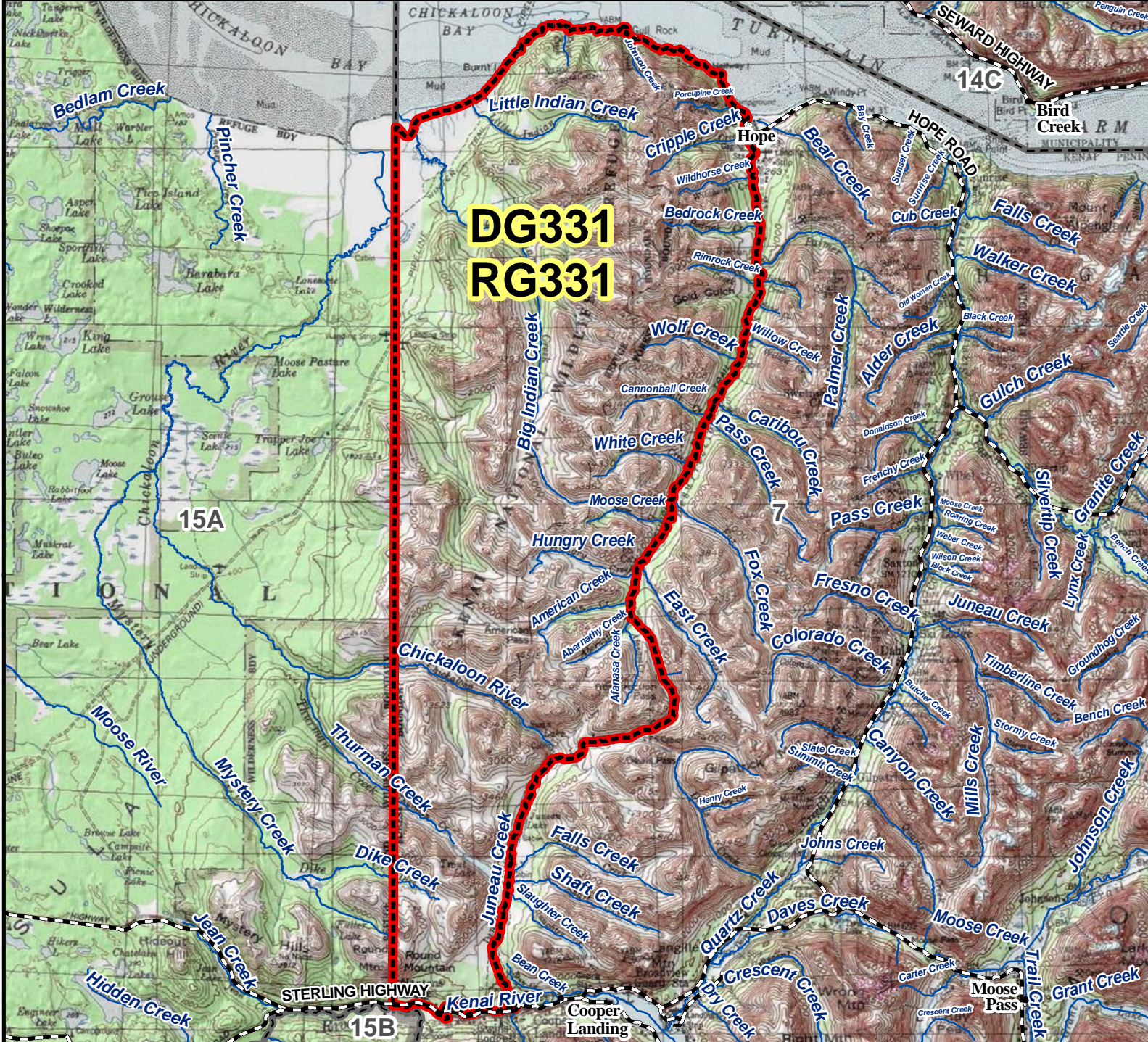


DG331 RG331 Mountain Goat Drawing and Registration Permit Hunt



AREA DESCRIPTION: Unit 7, Resurrection Creek West, that portion beginning at the northwest corner of Unit 7 at Chickaloon Bay, then south along the western boundary of Unit 7 (W150°) to the Kenai River, then easterly along the north bank of the Kenai River to the confluence of Juneau Creek, then north up Juneau Creek to its headwaters, then across the saddle to the headwaters of Resurrection Creek, then northerly down Resurrection Creek to Turnagain Arm, then westerly along the south shore of Turnagain Arm to the point of origin.

