

Pilot Station Test Fishery—2014 MSA

Stratum 1, June 1—11, 2014

Stratum 2, June 12—20, 2014

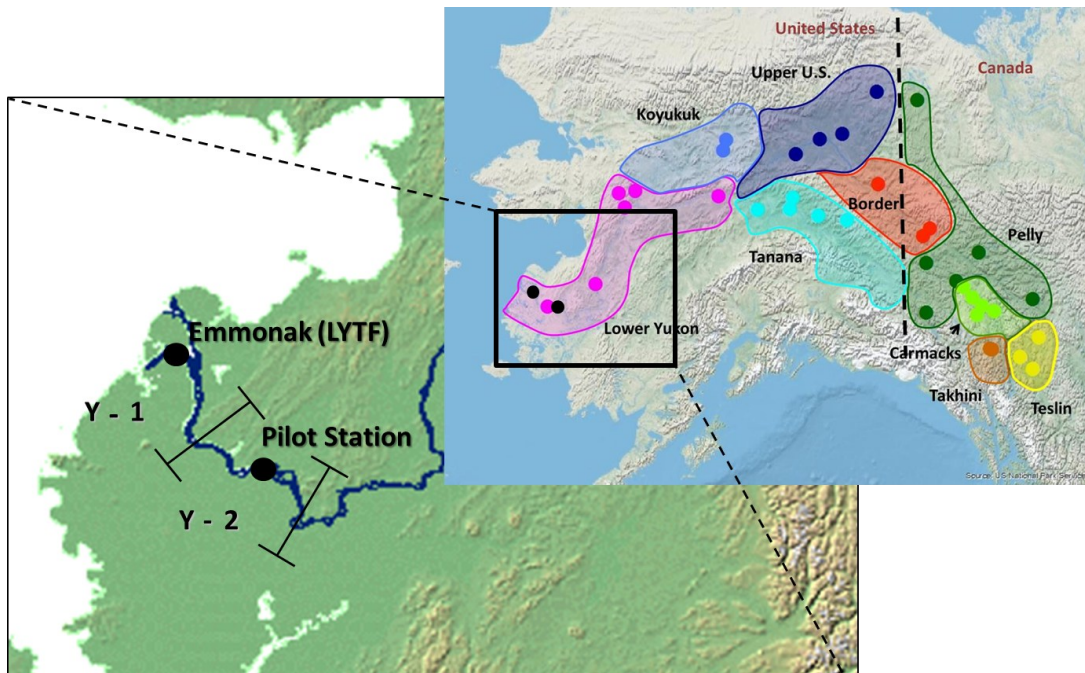
Estimates provided inseason and are to be considered preliminary

Reporting Group	Pilot Cumulative				Pilot Stratum 1				Pilot Stratum 2			
	June 1 - 20				June 1 - 11				June 12 - 20			
	Est	S.D.	CV	90%CI	Est	S.D.	CV	90%CI	Est	S.D.	CV	90%CI
Country												
United States	0.488	0.048	0.098	(0.413-0.571)	0.503	0.070	0.139	(0.392-0.621)	0.479	0.057	0.119	(0.390-0.575)
Canada	0.512	0.048	0.094	(0.429-0.587)	0.497	0.070	0.140	(0.379-0.608)	0.521	0.057	0.109	(0.425-0.610)
Broad-scale												
Lower Yukon	0.136	0.025	0.187	(0.096-0.180)					0.195	0.037	0.189	(0.137-0.258)
Middle Yukon	0.352	0.049	0.140	(0.276-0.438)					0.284	0.057	0.200	(0.197-0.382)
Canada	0.512	0.048	0.094	(0.429-0.587)					0.521	0.057	0.109	(0.425-0.610)
Fine-scale												
Lower Yukon	0.136	0.025	0.187	(0.096-0.180)								
Koyukuk	0.027	0.033	1.241	(0.000-0.095)								
Tanana	0.273	0.044	0.162	(0.200-0.345)								
Upper U.S.	0.053	0.045	0.844	(0.000-0.138)								
Canada	0.512	0.048	0.094	(0.429-0.587)								

Insufficient sample size

Insufficient sample size

Note- Estimated proportional contributions (Est), standard deviations (S.D.), coefficient of variation (CV), and 90% credibility intervals (90% CI) by reporting group of Chinook salmon caught in the District Y-2 Pilot Station Test Fishery, 2014



Above— Map showing locations of the Lower Yukon Test Fishery (LYTF) and Pilot station sonar site relative to the fine scale reporting regions used in MSA.