

Alaska Mariculture Program Update



Cynthia Pring-Ham
Mariculture Program Manager
Alaska Dept. of Fish and Game

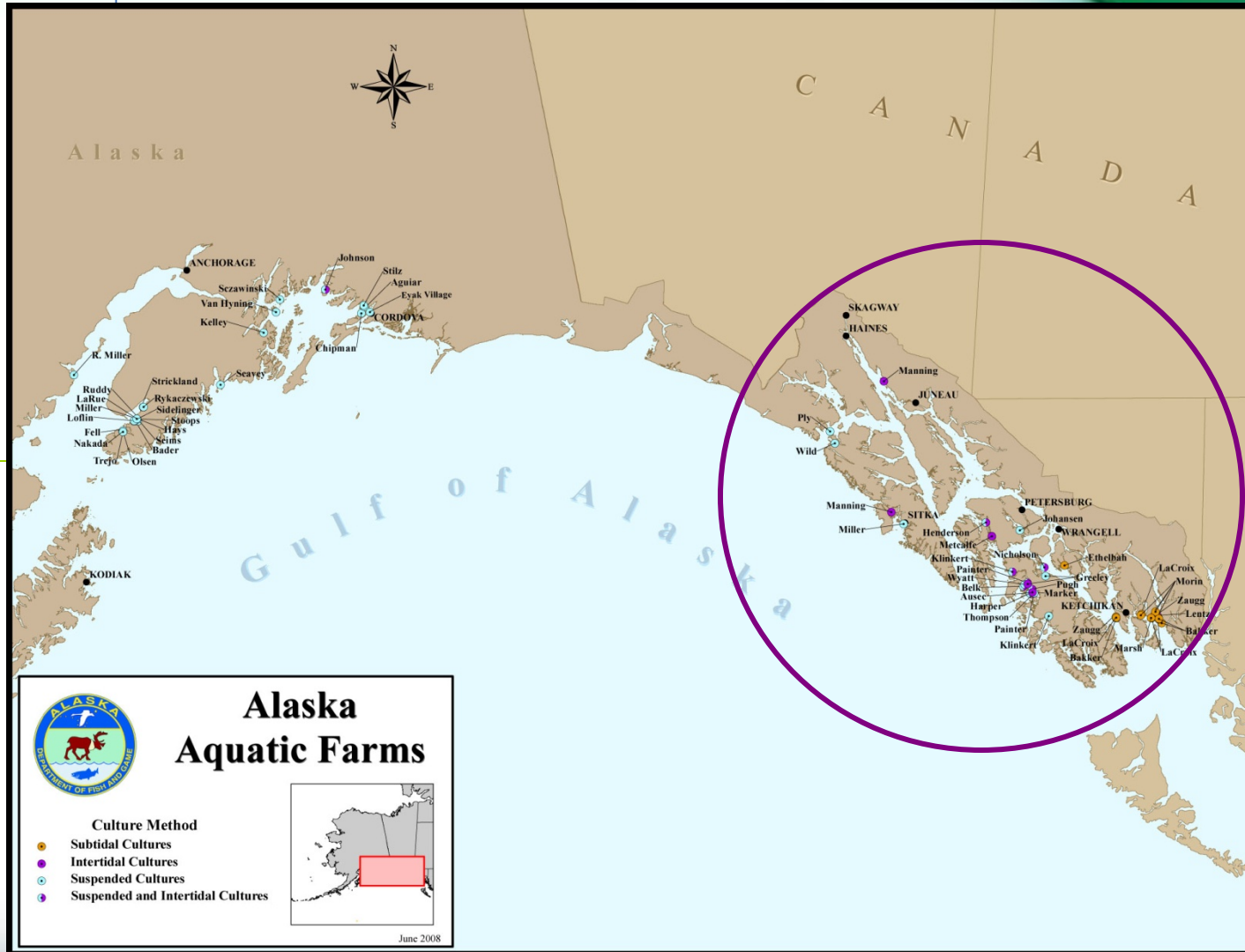
Board of Fisheries Shellfish Meeting
Petersburg, January 2009



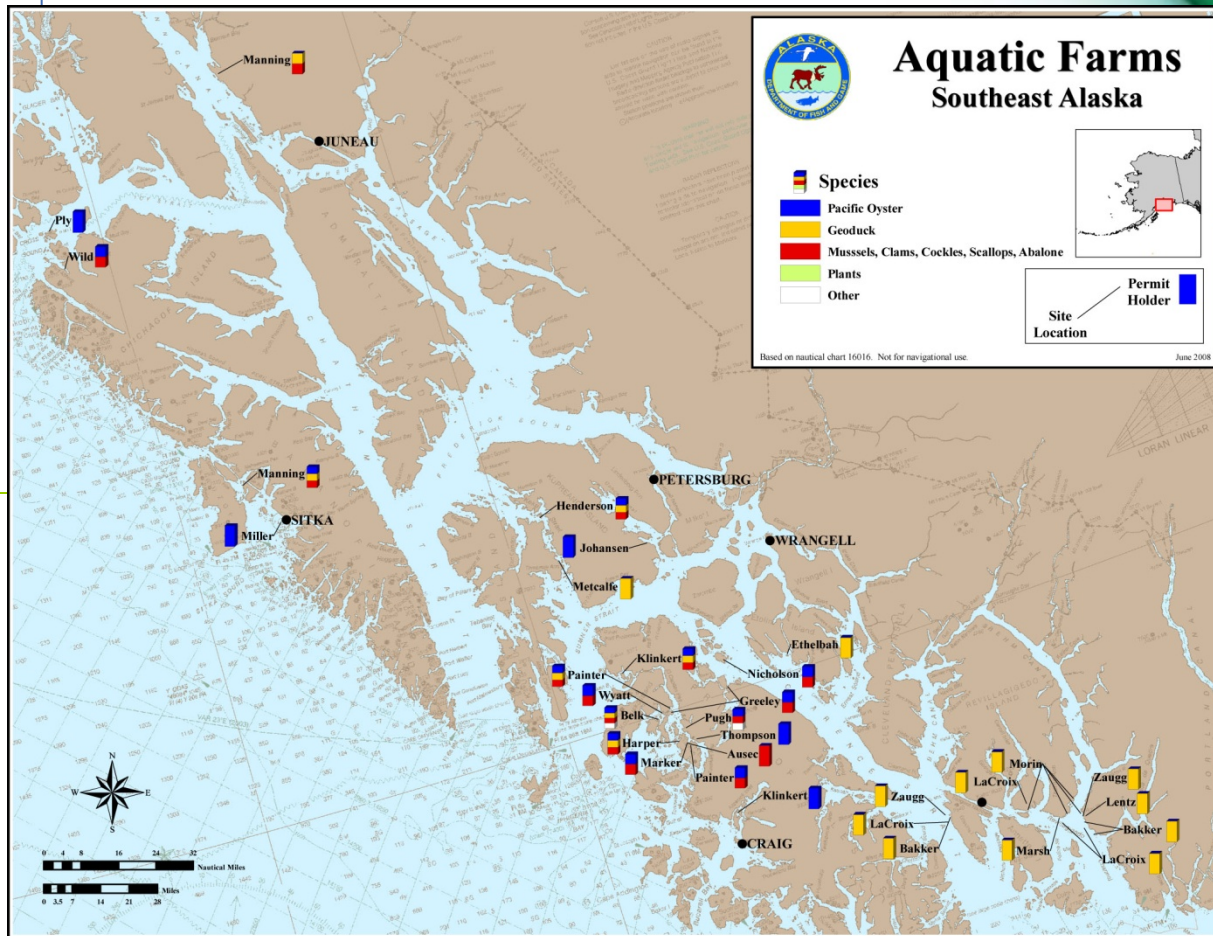
Mariculture Program Beginnings The Aquatic Farm Act

- Aquatic Farm Act – 1988
 - Issue permits to operate aquatic farms and shellfish hatcheries
 - Contribute to state's economy
 - Provide year-round supplies of premium quality Alaskan shellfish and aquatic plants

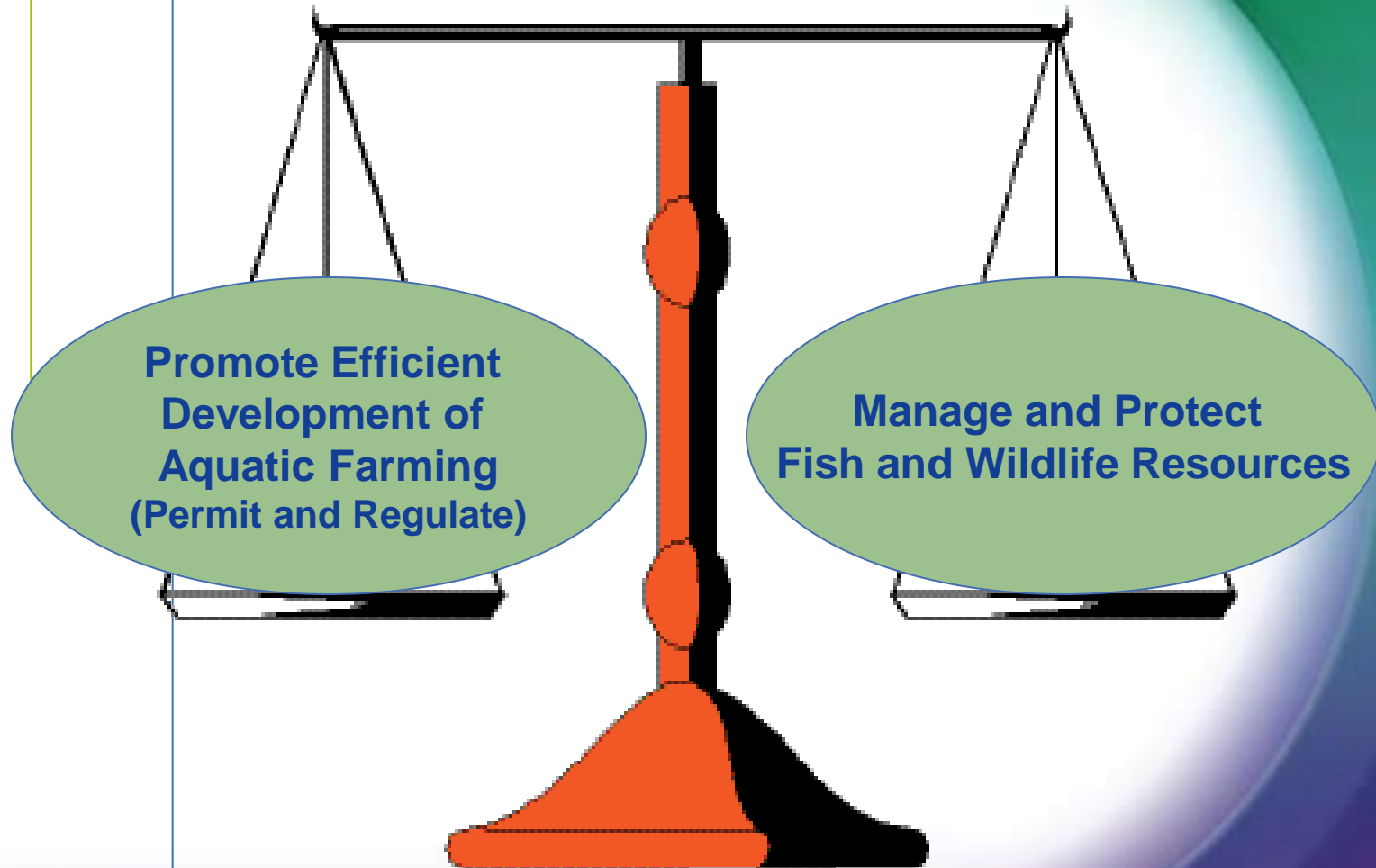
Aquatic Farm Site Locations



Southeast Aquatic Farms - Species Approved for Culture



ADF&G Missions



How does one apply for a farm site?

- Opening - Every Two Years
 - Next one - January 1 - April 30, 2009
 - Multiagency Application and Batch Review Process
 - 9 - 15 months (suspended and intertidal) to 24 months (subtidal/on bottom)
- Over the Counter
 - Designated areas (HB208)
 - Available
 - Suspended culture: 76 areas/710 acres
 - Intertidal culture: 8 areas/55 acres
 - Subtidal culture: 0 acres
 - Pre-authorized Sites
 - Suspended culture: 11 sites = 45 acres
 - 3 - 6 months (suspended) to 12 months if survey required (intertidal or subtidal/on bottom)

Aquatic Farm Permitting

Statewide Batch Process Method

DNR
CONSISTENCY
REVIEW
AND LEASE

ADF&G
OPERATION
PERMITS

DEC
Water
Classification
Shipper and Harvest
Permits

Aquatic Farm Permits - Oysters



92%

Aquatic Farm Permits – Littleneck Clams & Mussels



8%

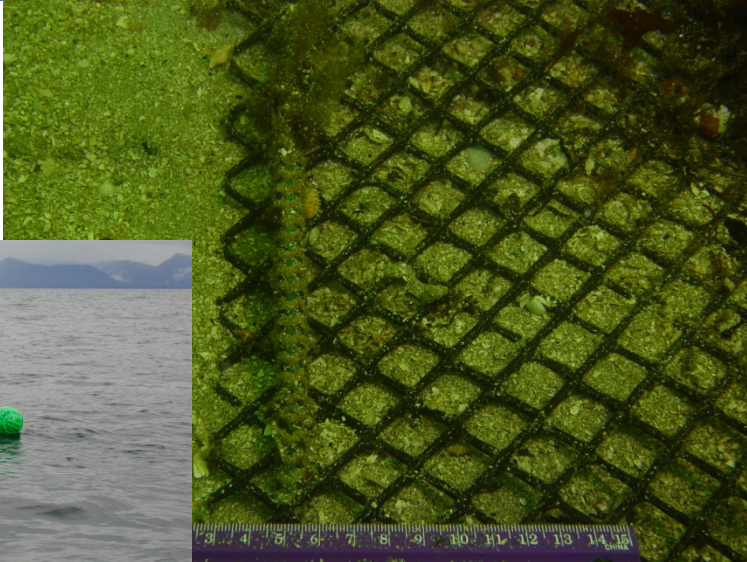


<1%

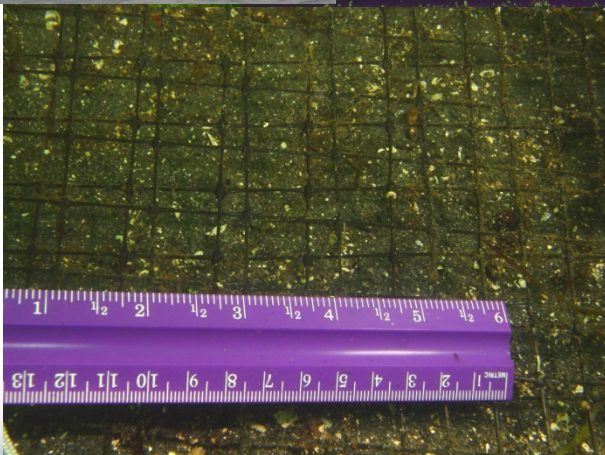


Aquatic Farm Permits - Geoducks

SUBTIDAL



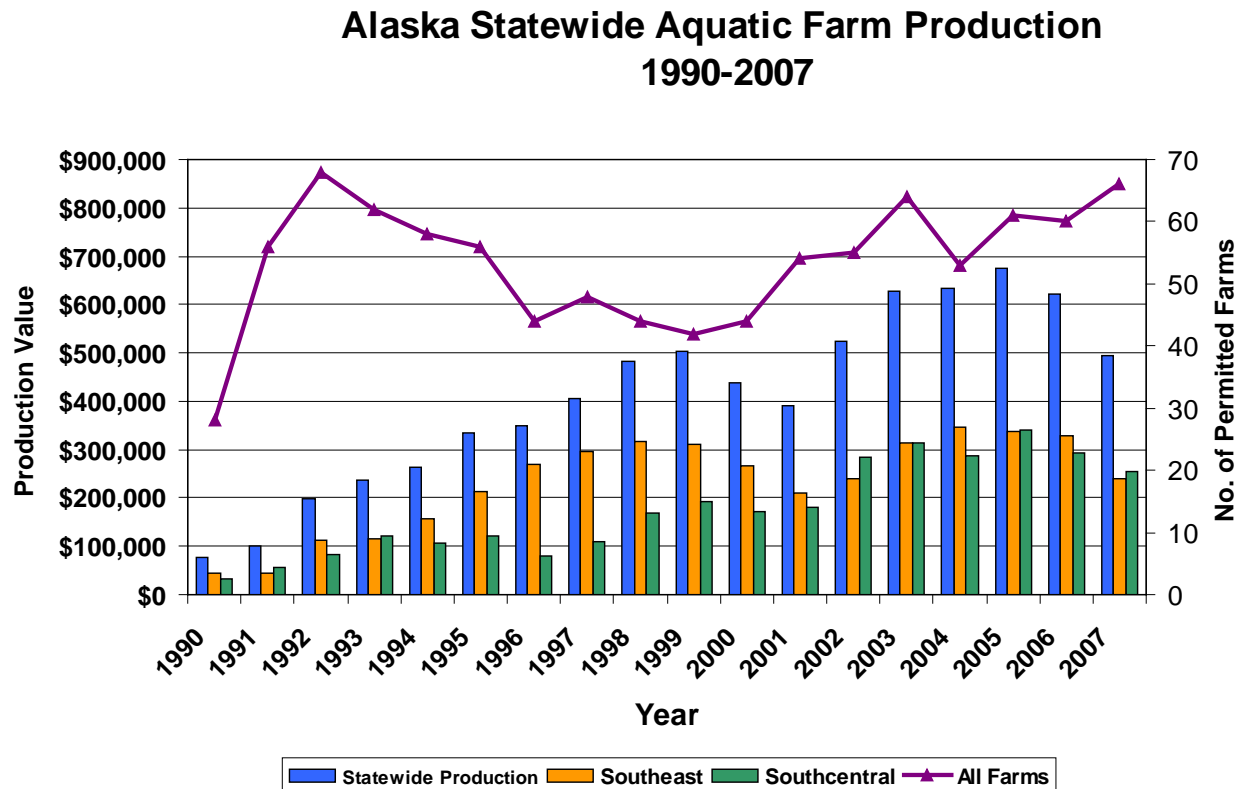
INTERTIDIAL



Aquatic Farm Permits - Cockles



Statewide Aquatic Farm Production

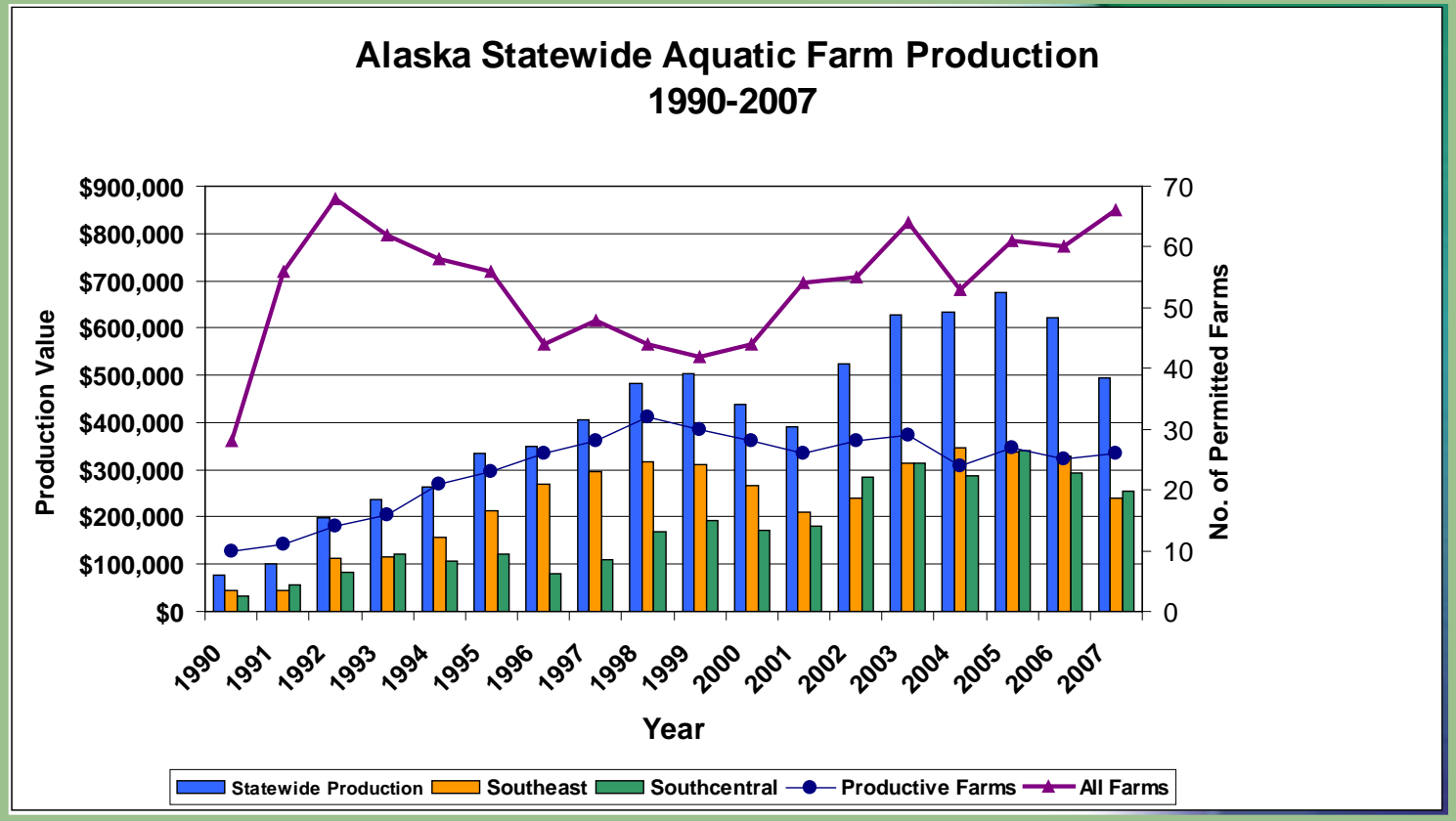


Statewide

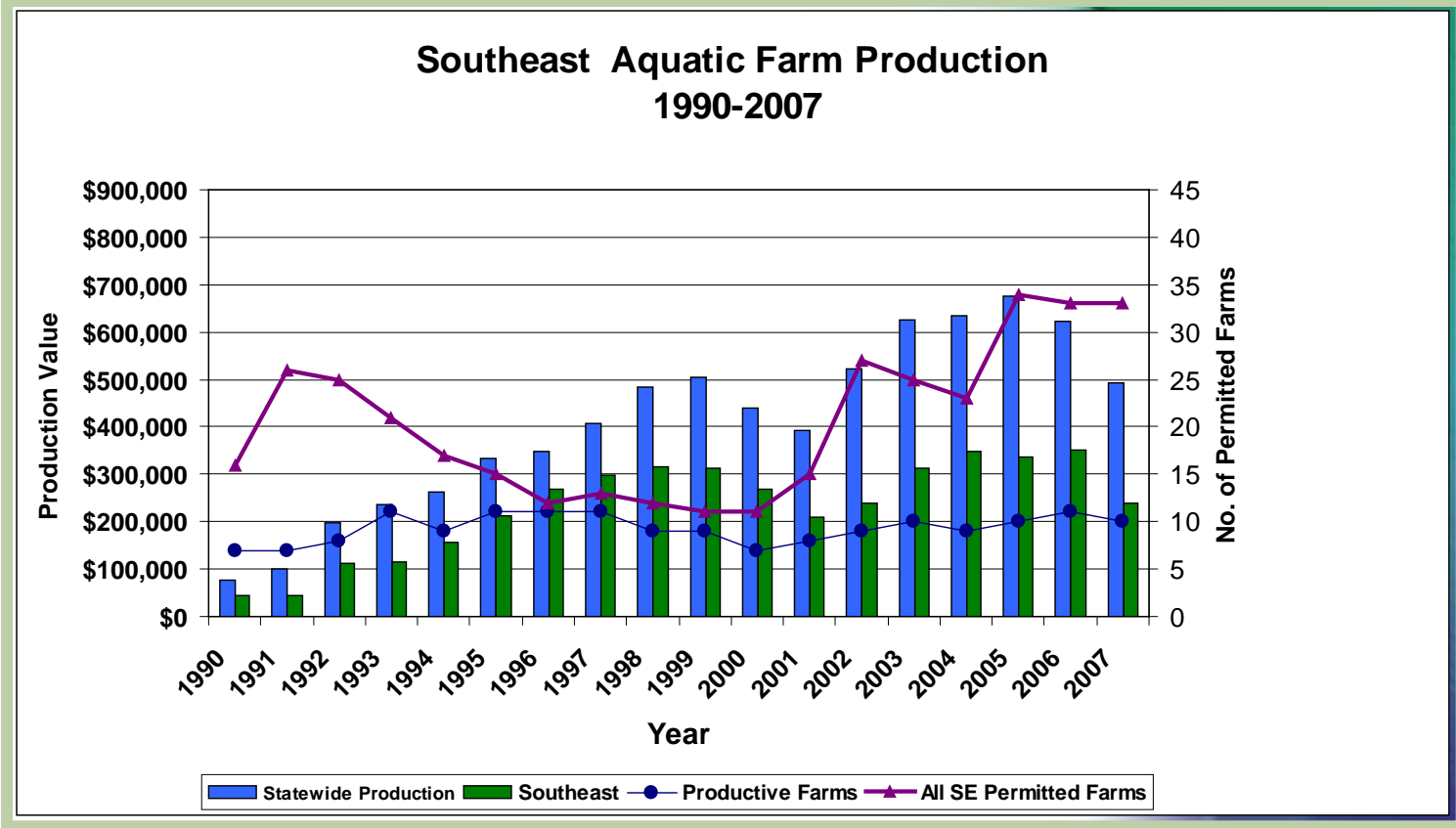
- 66 active permits
- \$493,458 value
- 325 acres

Statewide Aquatic Farm Production

Statewide
30% of
farms are
productive



Southeast Aquatic Farm Production

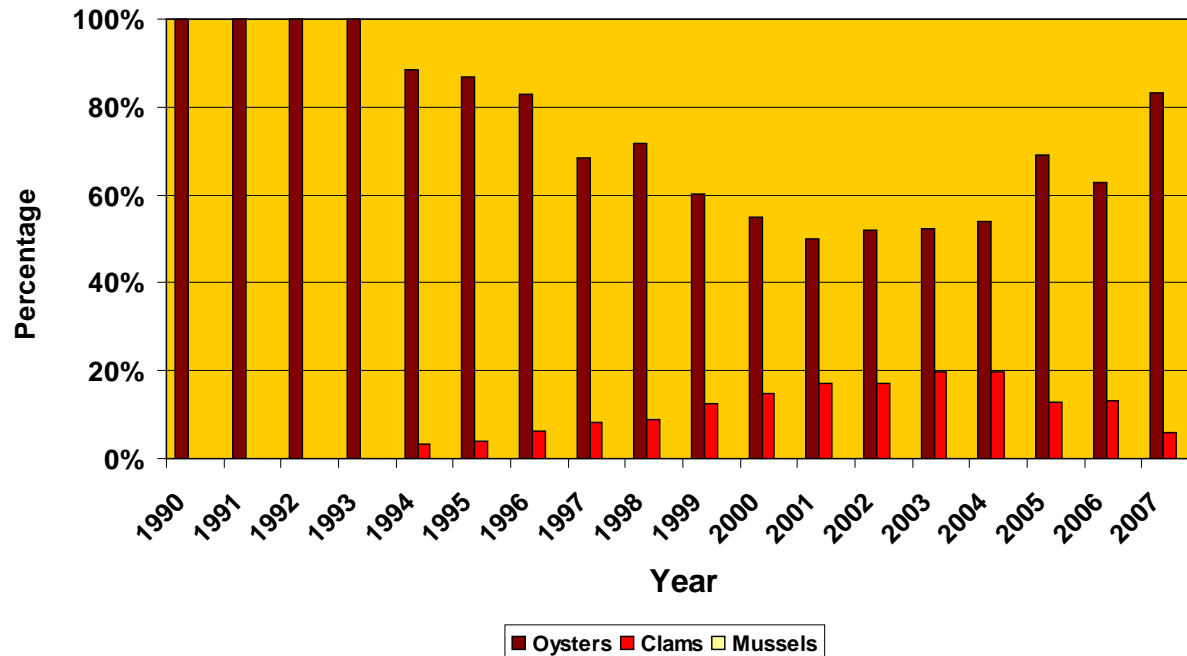


Southeast

- 48% of total production in SE
- 50% of active permits in SE
- 30% in SE productive
- 65% of total acres in SE

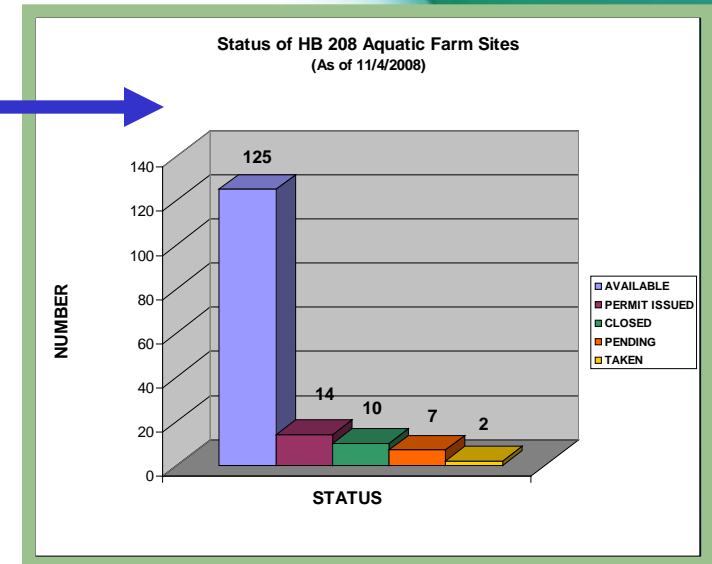
Southeast Production by Species

**Southeast Aquatic Farm Percentage Production By Species
1990-2007**



Status of Sites Applied for within HB 208 Areas

- 158 designated areas made available for lease by DNR in 2003
- Status
20% Taken – DNR/OTC Program
 - 14 sites permitted
 - 10 sites closed or withdrawn
 - 7 sites pending
 - 2 sites taken
- Problems
 - Remote Locations
 - Biomass Survey and Fee Not Paid (intertidal and subtidal only)
 - Applicant or permit holder change mind or have incomplete information



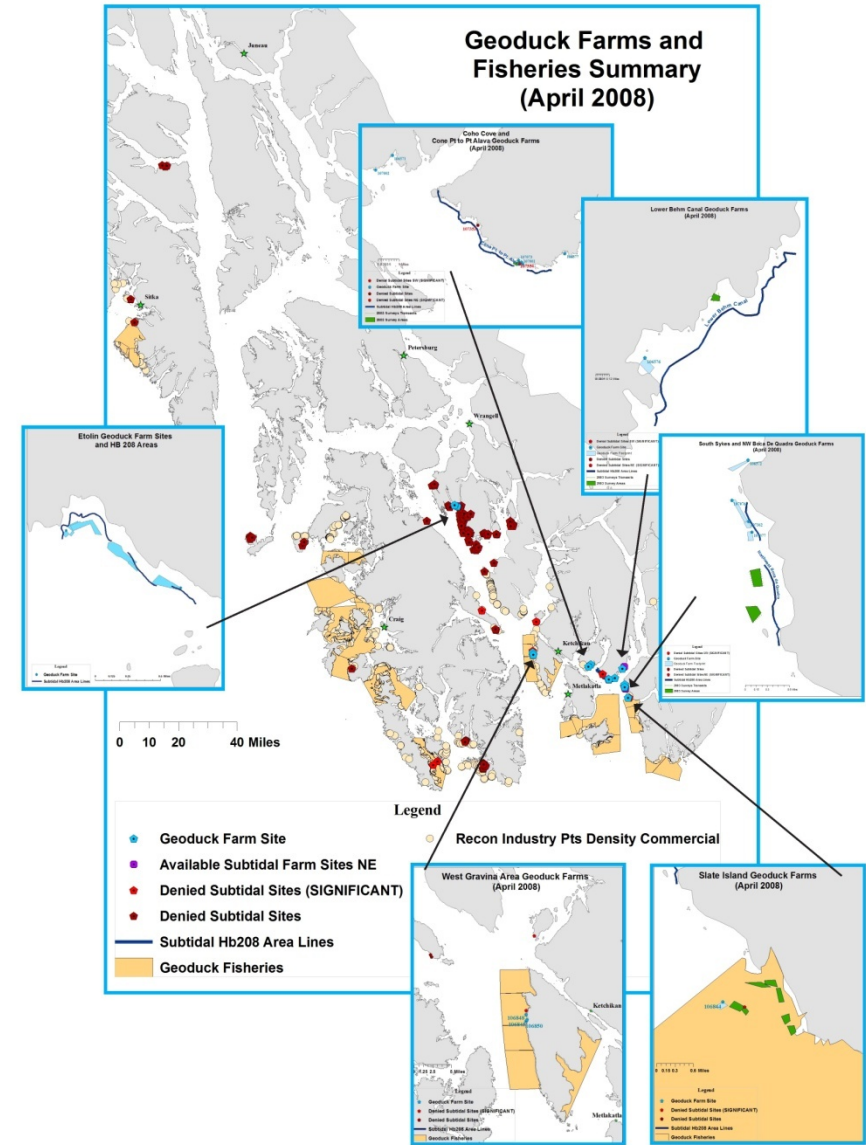
Geoduck Farming

- 22 Farm Sites
 - 5 intertidal and 17 subtidal
 - No production yet



Subtidal Geoduck Farm Provisions

- Insignificant Wild Stock Threshold
 - No more than 2000 lbs of geoduck per acre
 - Determined by Biomass Survey
 - Payment of Survey Fee with Application
 - \$5,000 cap/farm site
- Restoration of Wild Stock Harvested
 - Notification of Landings
 - Record of No. of Geoduck Harvested
 - Security
 - Assurance for performance
 - Certificate of Deposit Established between State of Alaska and Permit Holder
 - Return at Termination when provision met



Future Activities



Alutiiq Pride Shellfish
Hatchery Management Plan



ArcGIS Farm Review Software Application



Mariculture Development
Zones



OceansAlaska Research
Advisory Coordination

Questions



Photo by David Petree, ADF&G
Kahli Cove, SE Alaska