

Division of Wildlife Conservation
Eddie Grasser, Director
Region I – Southeast Alaska
802 3rd Street
Douglas, AK 99824-5412
(907) 465-4265



Alaska Department of Fish and Game
Doug Vincent-Lang, Commissioner
PO Box 115526
Juneau, AK 99811-5526
www.adfg.alaska.gov

Advisory Announcement

For Immediate Release: July 23, 2020

CONTACT: Carl H. Koch
Assistant Area Management Biologist
(907) 465-4329
Carl.Koch@alaska.gov

CLOSURE TO MOUNTAIN GOAT HUNTING BETWEEN THE KICKING HORSE RIVER AND DAVIDSON GLACIER (RG026)

(DOUGLAS)- The Alaska Department of Fish and Game announces the western shore of the Chilkat Inlet, from the Kicking Horse River/ Garrison Glacier south to the northern border of the Davidson Glacier (see map below) is closed to mountain goat hunting. An emergency order (01-02-20) was issued to close the goat hunting season in this area at **11:59 pm on Friday, July 31, 2020**.

Biologists observed 48 goats (42 adults, 6 kids) during an aerial survey conducted on September 28, 2016. Subsequent surveys have resulted in lower numbers of observed goats. On September 17, 2019, under conditions similar to the fall 2016 survey, 40% fewer goats (25 adults, 4 kids) were observed. Due to the vulnerability of goats in this area, an emergency order is being issued.

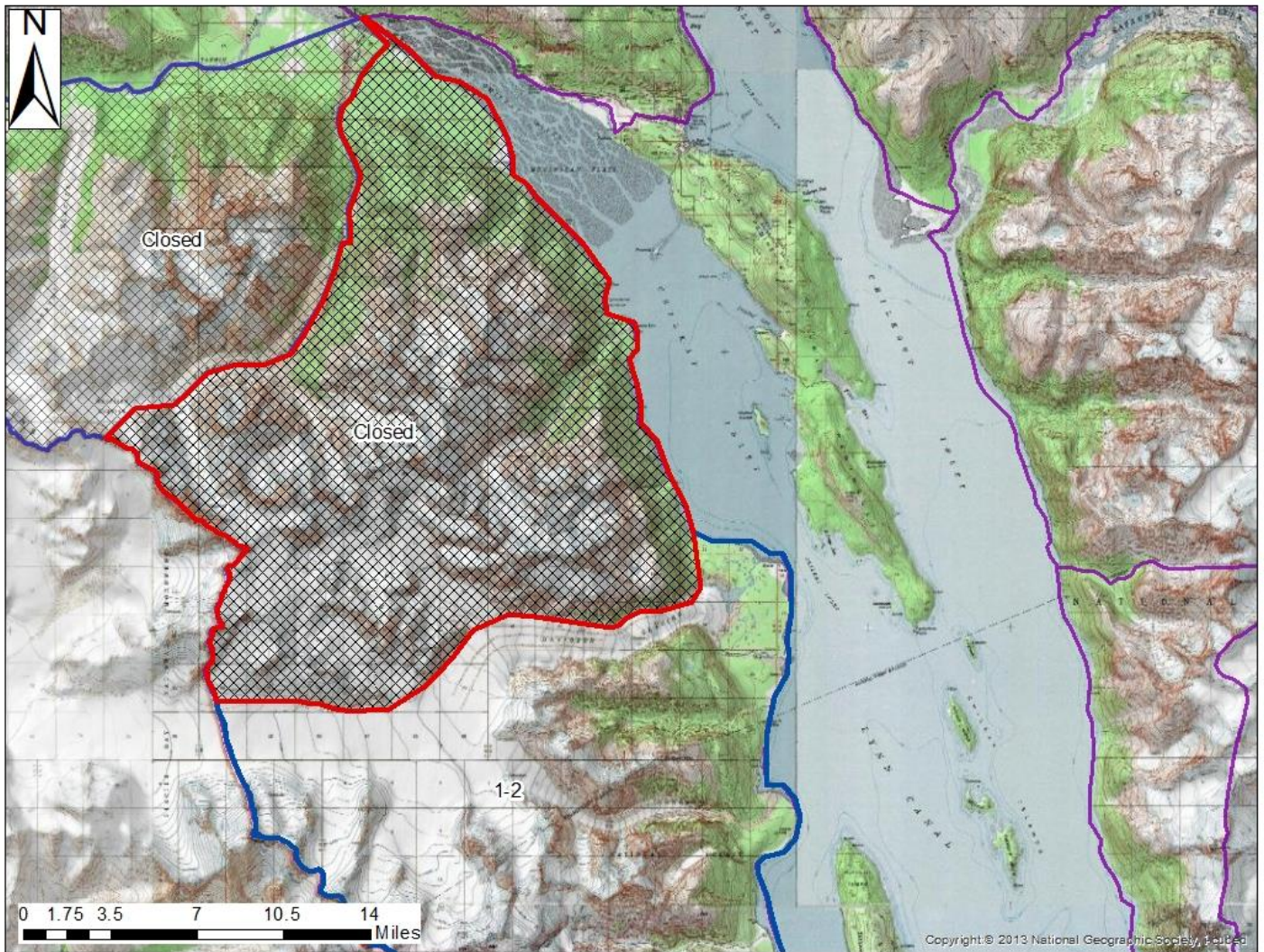
Those portions of Unit 1D not affected by emergency orders will remain open until the harvest guidelines are reached or the seasons come to their scheduled conclusions.

Biologists with the Alaska Department of Fish and Game encourage hunters to target male goats to allow for a higher sustainable harvest. Hunters with questions about goat hunting can contact Carl Koch, in the Douglas Area Office at 907-465-4329.

Division of Wildlife Conservation
Eddie Grasser, Director
Region I – Southeast Alaska
802 3rd Street
Douglas, AK 99824-5412
(907) 465-4265



Alaska Department of Fish and Game
Doug Vincent-Lang, Commissioner
PO Box 115526
Juneau, AK 99811-5526
www.adfg.alaska.gov



####