

Division of Wildlife Conservation  
Eddie Grasser, Director  
Douglas  
PO Box 110024  
Juneau, AK 99811-0024



Alaska Department of Fish and Game  
Doug Vincent-Lang, Commissioner  
PO Box 115526  
Juneau, AK 99811-5526  
www.adfg.alaska.gov

## PRESS RELEASE

*For Immediate Release: July 24, 2019*

### CONTACT:

Roy Churchwell, Area Management Biologist  
(907) 465-4266

## Portion of Unit 5A Closed to Mountain Goat Hunting

Biologists with the Alaska Department of Fish & Game in Douglas announce a closure to a portion of the mountain goat hunting season under the state registration permit hunt RG170 in Unit 5A. The closed area begins on the west shore of Harlequin Lake and the western edge of the Yakutat Glacier; then west of Harlequin Lake and Yakutat Glacier to Yakutat Bay and Disenchantment Bay; and south of Russell and Nunatak Fjords. Hunters are reminded that the Nunatak Bench area remains closed to mountain goat hunting.

Aerial surveys conducted during 2006-2011 in this area indicate a significant decline in goat numbers. The following are survey results by year: 2006 (122 goats), 2007 (66 goats), 2008 (57 goats), 2009 (48 goats), 2010 (12 goats), and 2011 (38 goats) observed between Harlequin Lake and the Hubbard Glacier. The department and the US Forest Service conducted a survey September 2016 and observed 19 total goats (16 adults, 3 kids). The consistently low number of goats detected suggests the areas' goat population remains depressed. Any harvest of goats in this area could have long term negative effects on the health and hinder recovery of this population. Due to the vulnerability of goat in the area, it necessary to close this season before it opens. The US Forest Service has planned surveys in September of this year. If counts come back favorable, we will reconsider this closure.

**An Emergency Order (01-01-19) has been issued that will close the mountain goat hunting season in this area on Wednesday, 31 July 2019 @ 11:59 pm.**

All other mountain goat hunting regulations in Unit 5A, including the Brabazon Range east of Harlequin Lake and Yakutat Glacier, remain unchanged and are not affected by this Emergency Order. Yakutat residents are reminded that this does not affect the federal subsistence season.

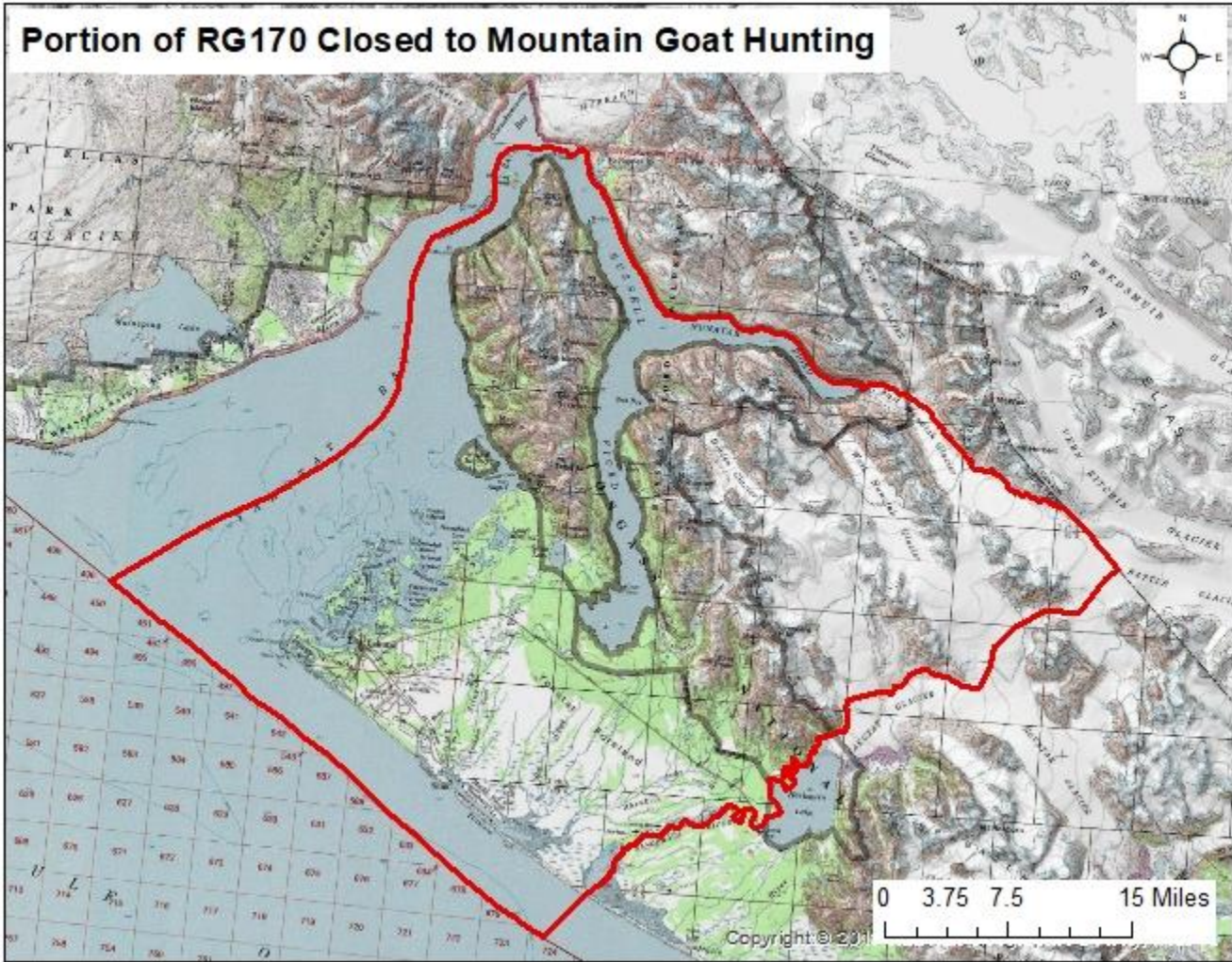
Please call the Douglas Area office at (907) 465-4265 for more information.

Division of Wildlife Conservation  
Eddie Grasser, Director  
Douglas  
PO Box 110024  
Juneau, AK 99811-0024



Alaska Department of Fish and Game  
Doug Vincent-Lang, Commissioner  
PO Box 115526  
Juneau, AK 99811-5526  
www.adfg.alaska.gov

### Portion of RG170 Closed to Mountain Goat Hunting



###