

COPPER BASIN AREA MOOSE & CARIBOU PROPOSALS

**Special Meeting of the Board of Game on
Copper Basin Area Hunting & Subsistence**



18–21 March 2017

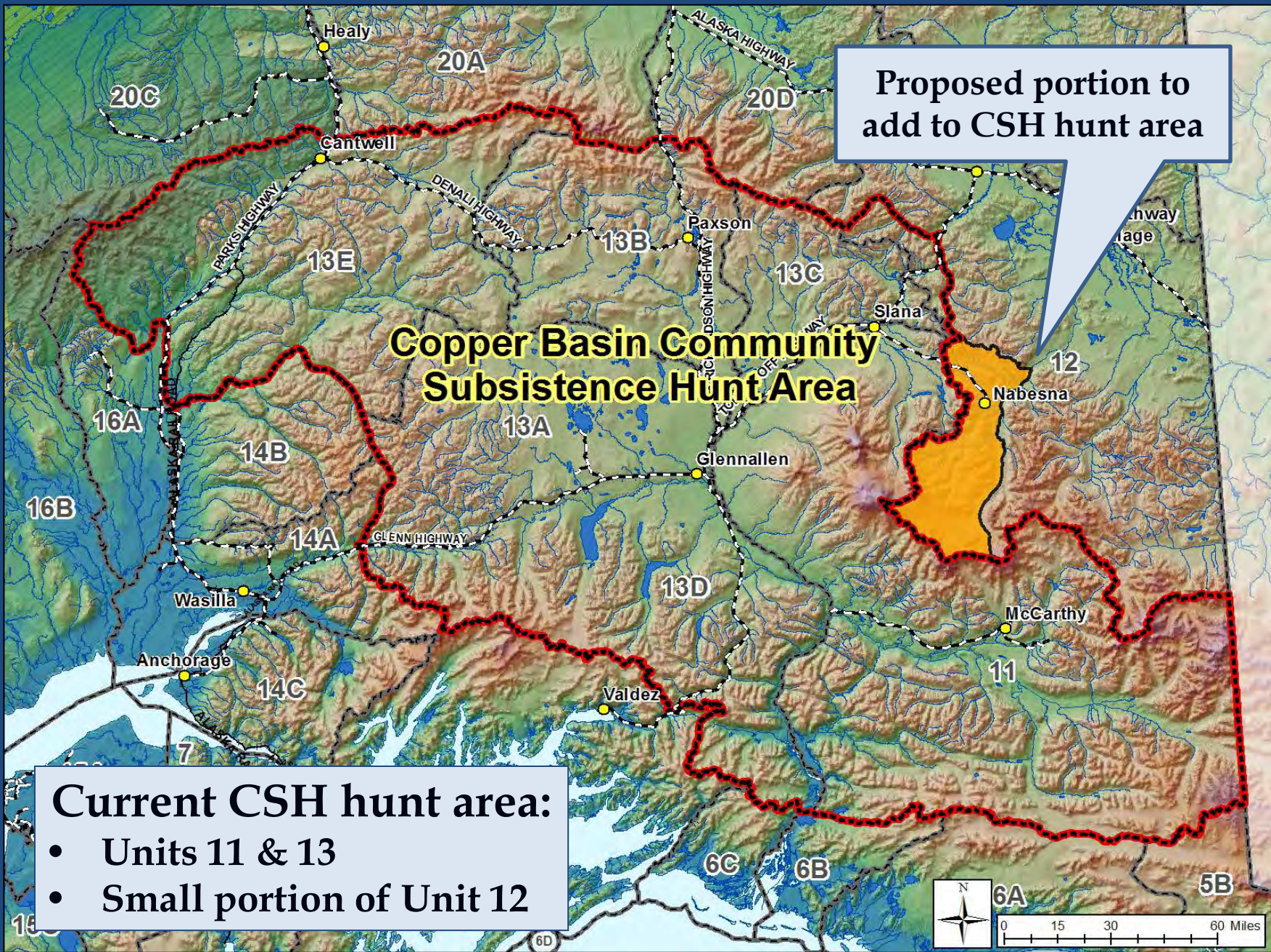


Expand the Copper Basin Community Subsistence Harvest (CSH) hunt area by adding a portion of Unit 12

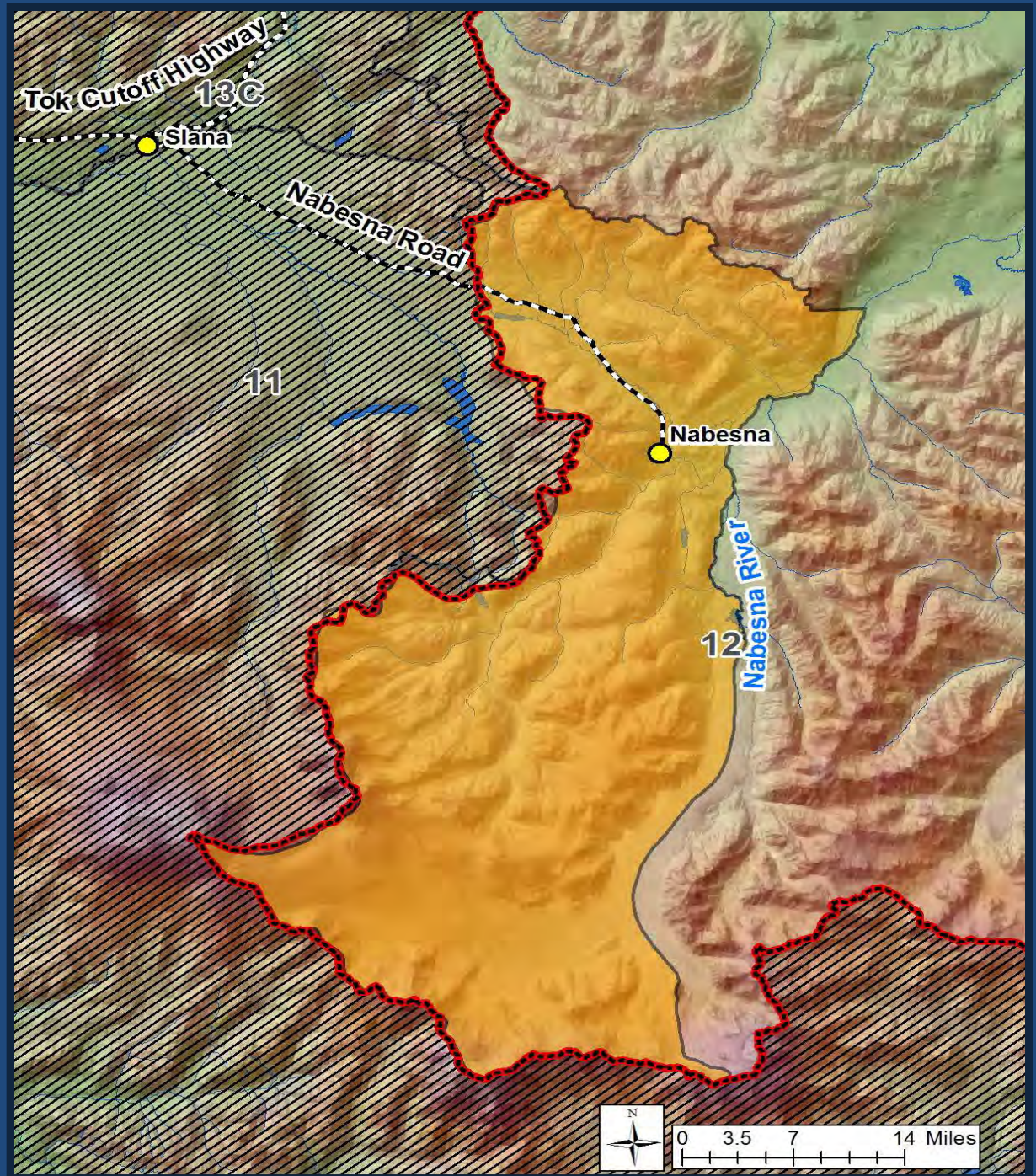
Department Recommendation:

- ❑ **NEUTRAL** on the allocation
 - ❑ expanding hunt area for moose
 - ❑ establishing a CSH moose season
- ❑ **OPPOSED** to establishing a CSH caribou season

Upper Tanana/Fortymile AC



Approx. 1,200 mi²
~65% of area >5000 ft.



Current CSH Moose Hunt

Units 11 & 13

- ❑ August 20–September 20
- ❑ 1 antlered bull
 - Up to 100 “any-bull” moose
 - “Any-bull” quota by subunit
 - Once achieved – antler-restricted

Unit 12

- ❑ August 24–28 & September 8–17
- ❑ 1 bull with S/F, 50”, or 4 BT
- ❑ Same as harvest ticket season

Proposed Moose Season

- ❑ August 20–September 17
- ❑ 1 bull with S/F, 50”, or 3 BT
- ❑ Registration permit
- ❑ All of Nabesna Road

CSH Moose Participation & Harvest, RY2009, 2011–2016

Regulatory Year	Number of Groups	Number of Communities Participating	Number of Households	Number of Individual Participants	Total Number of Moose Harvested
2009	1	19	246	378	100 (68 any bulls)
2011	9	31	416	814	86 (59 any bulls)
2012	19	29	460	969	98 (73 any bulls)
2013	45	41	955	2,066	156 (81 any bull)
2014	43	41	893	1,771	150 (77 any bull)
2015	43	43	1,039	1,984	171 (92 any bull)
2016	73	48	1,527	3,400	201 (114 any bull)

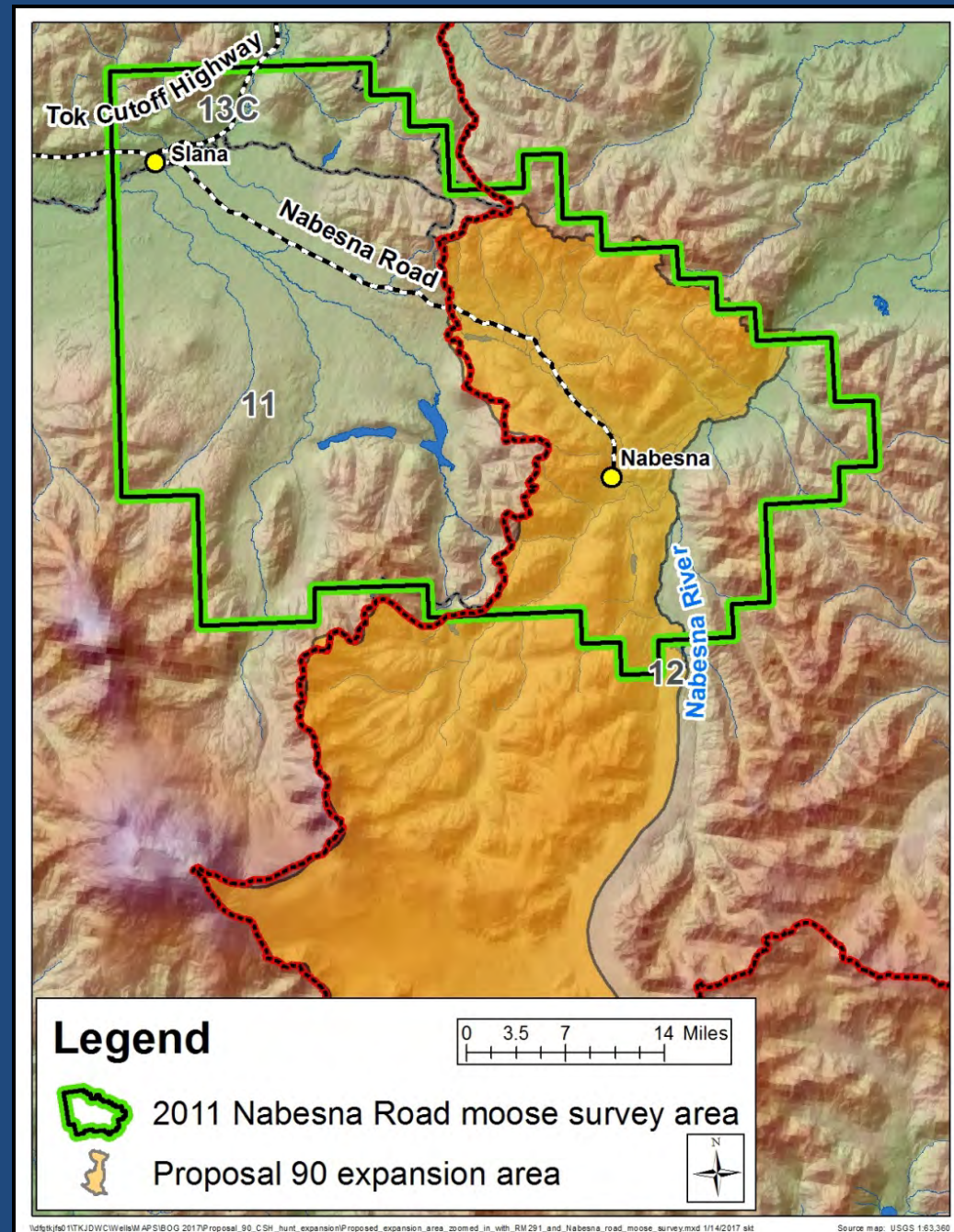
Nabesna Road (Unit 11)
3 reported hunting; 1 bull harvested

2011 Nabesna Road survey

- Bull:cow ratio = 35:100
(objective = 25:100)
- Density = 0.8 moose/mi²

Harvest in proposed area (2012-2016)

- Mean = 8 bulls per year
- Harvestable surplus estimate = 12–16 bulls



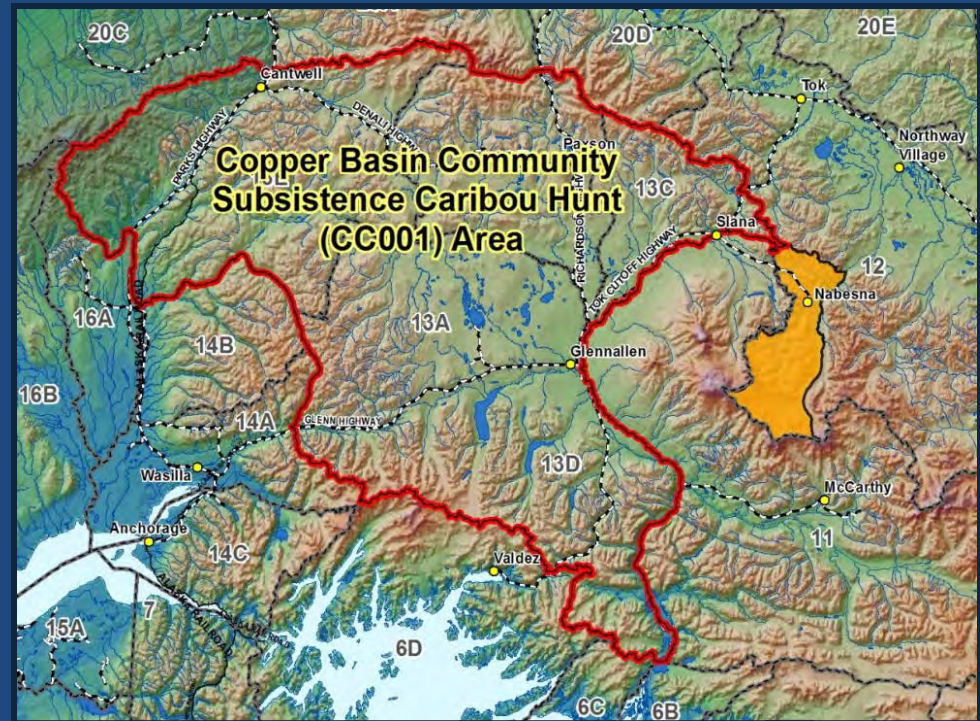
CSH Caribou Hunt (cc001)

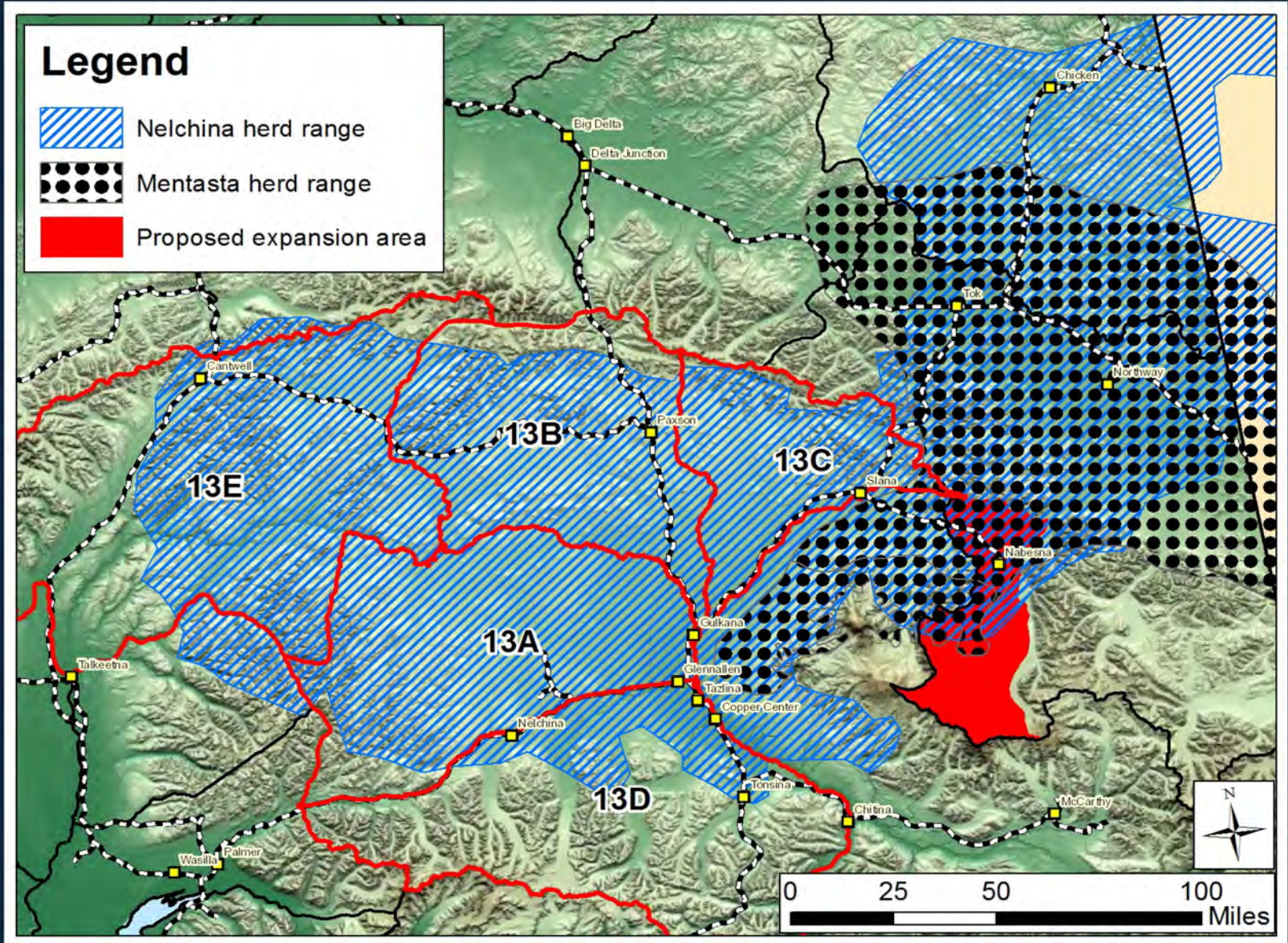
Unit 13

- August 10–September 20 & October 21–March 31
- 1 caribou/household
- Alter by emergency order

Units 11 & 12

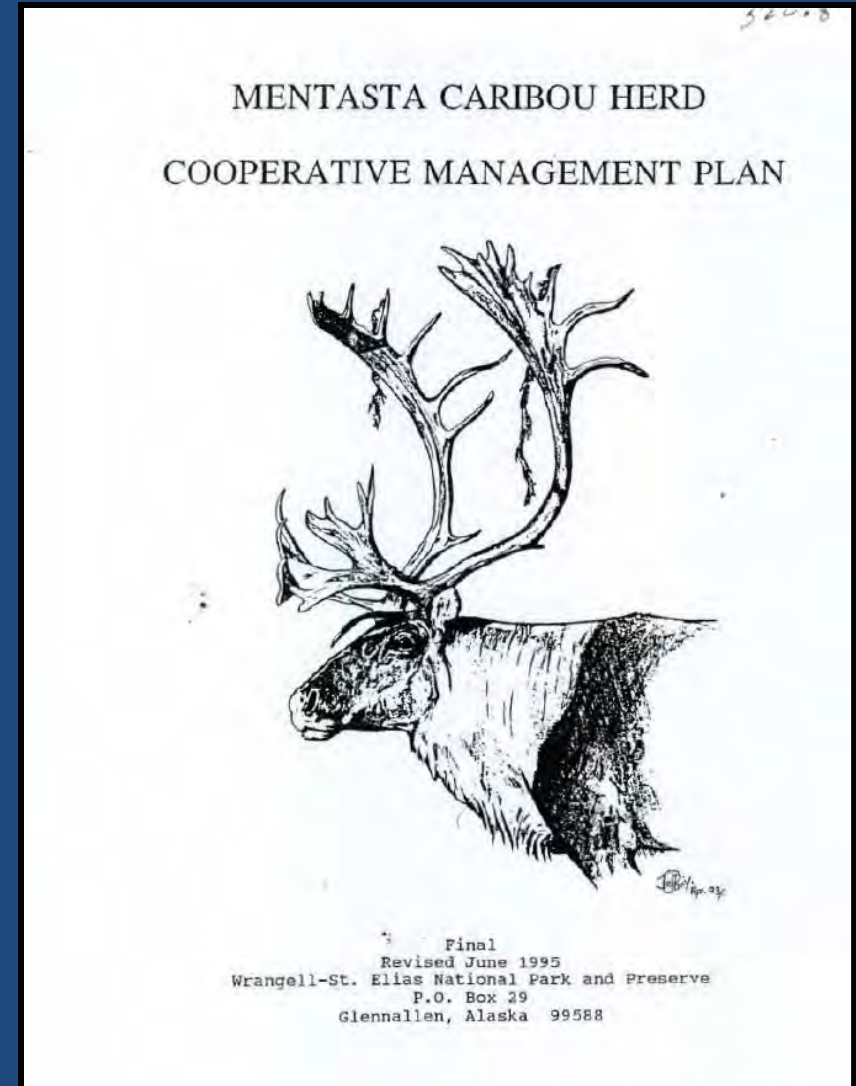
- No open season





Mentasta Caribou Herd

- ❑ No hunting since 1992
- ❑ 1995 plan specifies harvest strategy
- ❑ Recent population estimates: 300–500 caribou



Expand the Copper Basin Community Subsistence Harvest (CSH) hunt area by adding a portion of Unit 12

Department Recommendation:

- ❑ **NEUTRAL** on the allocation
 - ❑ expanding hunt area for moose
 - ❑ establishing a CSH moose season
- ❑ **OPPOSED** to establishing a CSH caribou season

Upper Tanana/Fortymile AC

Clarify the communities eligible for the 100
“any-bull” quota
and
extend the season for the community subsistence
harvest hunt for moose in the Copper Basin Area

Department Recommendation: **NEUTRAL**

Public Proposal

Proposed Moose Hunt Structure - Unit 11

Residents

August 10–September 20-25

- **CSH (CM300):** 1 bull per person; 1 any-bull per every 3 households; up to 100 any bulls may be harvested by **members of the eligible communities identified in 5 AAC 92.074(d)**; remaining bulls must be spike/fork, 50-inches, or 3 or more brow tines on at least one side.

August 20–September 20

- **Harvest Ticket:** 1 bull with spike/fork, 50-inch, or 3 or more brow tines on at least one side
- **DM324:** 1 bull by permit; up to 5 permits annually

August 20–September 17

- **RM291:** 1 bull with spike/fork, 50-inches, or 3 or more brow tines on at least one side

Proposed CSH Moose Hunt Structure - Unit 12

Subsistence Only

~~August 24–August 28 & September 8–September 17~~

August 24–September 25

- **CSH (CM300):** 1 bull with spike/fork, 50-inches, or 4 or more brow tines on at least one side per household by **members of the eligible communities identified in 5 AAC 92.074(d)**.

Proposed Moose Hunt Structure - Unit 13

Residents

August 20–September 20-25

- **CSH (CM300):** 1 bull per person; 1 any-bull per every 3 households; up to 100 any bulls may be harvested by **members of the eligible communities identified in 5 AAC 92.074(d)**; remaining bulls must be spike/fork, 50-inches, or 4 or more brow tines on at least one side.

September 1–September 20

- **Harvest Ticket:** 1 bull with spike/fork, 50-inches, or 4 or more brow tines on at least one side
- **DM324:** 1 bull by permit; up to 5 permits annually

October 1–October 31 & March 1–March 31

- **DM325:** 1 antlerless moose by permit; up to 200 permits

December 1–December 31

- **CM301:** 1 bull by **members of the eligible communities identified in 5 AAC 92.074(d)**; (not implemented since 2014)
- **RM319:** 1 bull (not implemented since 2014)

Clarify the communities eligible for the 100
“any-bull” quota
and
extend the season for the community subsistence
harvest hunt for moose in the Copper Basin Area

Department Recommendation: **NEUTRAL**

Public Proposal

Modify the amount reasonably necessary for subsistence (ANS) for moose by making a specific ANS finding for that cohort of moose that do not meet antler restrictions within the CSH area.

Department Recommendation: **NEUTRAL**

Ahtna Tene Nené

Current Regulations

- ▣ Positive customary and traditional use finding for moose with ANS of:
 - Unit 13: 300-600 moose
 - Unit 12: 60-70 moose
 - Unit 11: 30-40 moose

Proposed Regulations

- ▣ Designate a portion of the ANS for each unit as a specific ANS for moose that do not meet antler restrictions for other resident hunts in the area

Current Regulations

- ▣ In the Copper Basin CSH hunt area, excluding Unit 12, up to 100 bulls that do not meet general season antler restrictions may be harvested by CSH hunters.
- ▣ An “any bull” draw hunt is available for resident hunters in Unit 13 (DM324).
- ▣ An antlerless moose hunt is available for resident hunters in Unit 13 (DM325).
- ▣ General season antler restrictions include spike/fork, 50-inch antlers, or antlers with 4 or more brow tines on one side.

CSH Moose Participation & Harvest, RY2009, 2011–2016

Regulatory Year	Number of Groups	Number of Communities Participating	Number of Households	Number of Individual Participants	Total Number of Moose Harvested
2009	1	19	246	378	100 (68 any bulls)
2011	9	31	416	814	86 (59 any bulls)
2012	19	29	460	969	98 (73 any bulls)
2013	45	41	955	2,066	156 (81 any bull)
2014	43	41	893	1,771	150 (77 any bull)
2015	43	43	1,039	1,984	171 (92 any bull)
2016	73	48	1,527	3,400	201 (114 any bull)

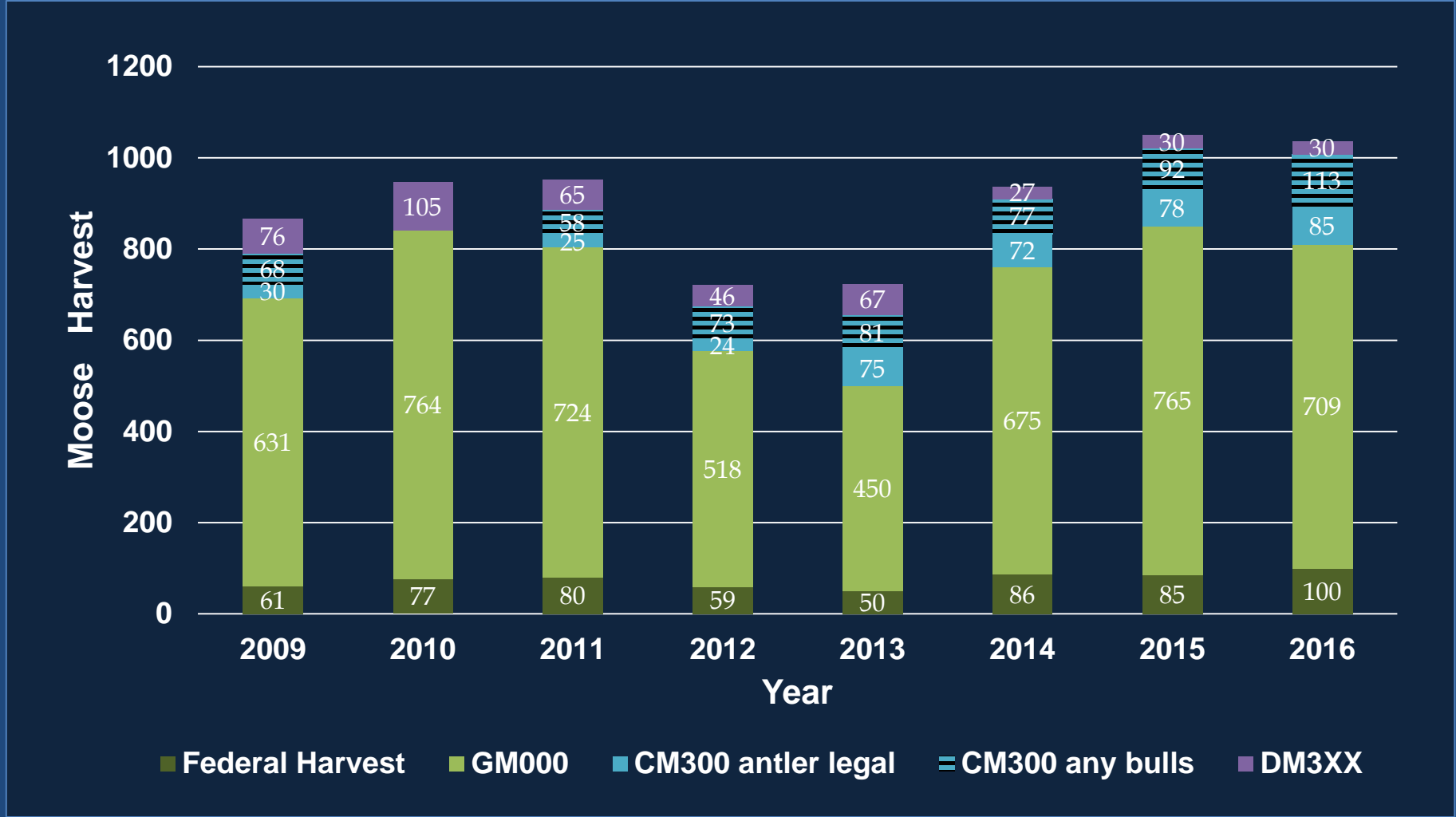
Unit 13 Moose Harvest by Hunt, RY 2009, 2011–2016

Regulatory Year	CM300 Harvest	GM000 Harvest	FM1301 Harvest	Draw Permit Harvest	Total Harvest
2009	98	631	61	76	866
2011	83	724	80	65	952
2012	97	518	59	46	720
2013	156	450	50	67	723
2014	149	675	86	27	937
2015	170	765	85	30	1,050
2016	201	709	100	30	1,040

Proposal 1

11, 12, 13 Moose

Unit 13 Moose Harvest by Hunt, RY 2009, 2011–2016



Modify the amount reasonably necessary for subsistence (ANS) for moose by making a specific ANS finding for that cohort of moose that do not meet antler restrictions within the CSH area.

Department Recommendation: **NEUTRAL**

Ahtna Tene Nené

Eliminate the community subsistence harvest
hunt for moose in the Copper Basin Area
and
replace with a Tier II hunt

Department Recommendation: **NEUTRAL**

Public Proposal

Proposed Moose Hunt Structure

Residents

August 20–September 20

- ~~CSH (CM300)~~ **Tier II: 100 any bull permits (1 per household)**; remaining Tier II hunters may harvest spike/fork, 50-inches, or 4 or more brow tines on at least one side.

September 1–September 20

- **Harvest Ticket:** 1 bull with spike/fork, 50-inches, or 4 or more brow tines on at least one side
- **DM324:** 1 bull by permit; up to 5 permits annually

October 1–October 31 & March 1–March 31

- **DM325:** 1 antlerless moose by permit; up to 200 permits

December 1–December 31

- ~~CM301 & RM319:~~ 1 bull (not implemented since 2014)

Eliminate the community subsistence harvest
hunt for moose in the Copper Basin Area
and
replace with a Tier II hunt

Department Recommendation: **NEUTRAL**

Public Proposal

Modify the community subsistence harvest hunt permit conditions for the Copper Basin Community Subsistence Hunt

Department Recommendation: **NEUTRAL**

Ahtna Tene Nené

This proposal seeks to amend the department's authority under 5AAC 92.072 to issue community-based subsistence harvest permits and reports in 5AAC 92.074(d) as follows:

- 1) Clarify that the community subsistence hunt (CSH) is intended for “communities” that are engaged in the community-based pattern of subsistence hunting rather than any group of 25 residents without any link to other members besides the desire to take advantage of increased harvest opportunity through participation in the CSH regulations;

- 2) Require each community that wishes to establish a CSH to make a proposal to the board that includes that community's subsistence hunting area and a pattern of community-based subsistence use of the area;

- 3) Require the board to determine that a community is eligible before the department can issue a CSH permit to that community;

- 4) Amend reporting requirements to allow waivers for communities that demonstrate a long-term, consistent pattern of use for communities that have successfully completed five years of reporting;
- 5) Eliminate the restriction of only issuing one locking tag to harvest an any bull moose for every three households in a CSH community;

- 6) Require each community to demonstrate a quota or other allocation that is the amount necessary for subsistence (ANS) uses for the community and a season or other methods, means etc. that is necessary to provide a reasonable opportunity for the community's subsistence uses; and
- 7) Adds a stipulation that participants may only change groups every three years.

Modify the community subsistence harvest hunt permit conditions for the Copper Basin Community Subsistence Hunt

Department Recommendation: **NEUTRAL**

Ahtna Tene Nené

- 1) Establish Tier I moose hunt and change application process for Tier I caribou;
- 2) Apply new process to Tier I moose permit application

Department Recommendation: **NEUTRAL**

Ahtna Tene Nené

Proposed Caribou Hunt Structure

Residents Only

August 10–September 20 & October 21–March 31

- **CSH (CC001):** 1 caribou per household; unlimited participation; extensive hunt requirements; up to 300 caribou may be taken
- **Tier I registration (RC566):** 1 caribou per household; unlimited number of permits; must hunt moose in Unit 13; **Must demonstrate the household is engaged in a subsistence pattern of use including reliance upon a wide diversity of fish and game resources from Unit 13 that provides substantial economic, cultural, social, and nutritional elements of the household's way of life and other criteria listed in 5AAC 99.010(b).**

August 20–September 20 & October 21–March 31

- **Draw (DC485):** up to 5,000 permits

August 1-September 30 & October 21-March 31

- **Federal permits:** 2 caribou per person on federal lands for residents of Units 11, 12, 13, 20A, 20D

Proposed Moose Hunt Structure

Residents Only

August 20–September 20

- **CSH (CM300):** 1 bull per person; 1 any-bull per every 3 households; up to 100 any bulls may be harvested by hunt participants; remaining bulls must be spike/fork, 50-inches, or 4 or more brow tines on at least one side.

September 1–September 20

- **Harvest Ticket:** 1 bull with spike/fork, 50-inches, or 4 or more brow tines on at least one side
- **DM324:** 1 bull by permit; up to 5 permits annually

October 1–31 & March 1–31

- **DM325:** 1 antlerless moose by permit; up to 200 permits

December 1–December 31

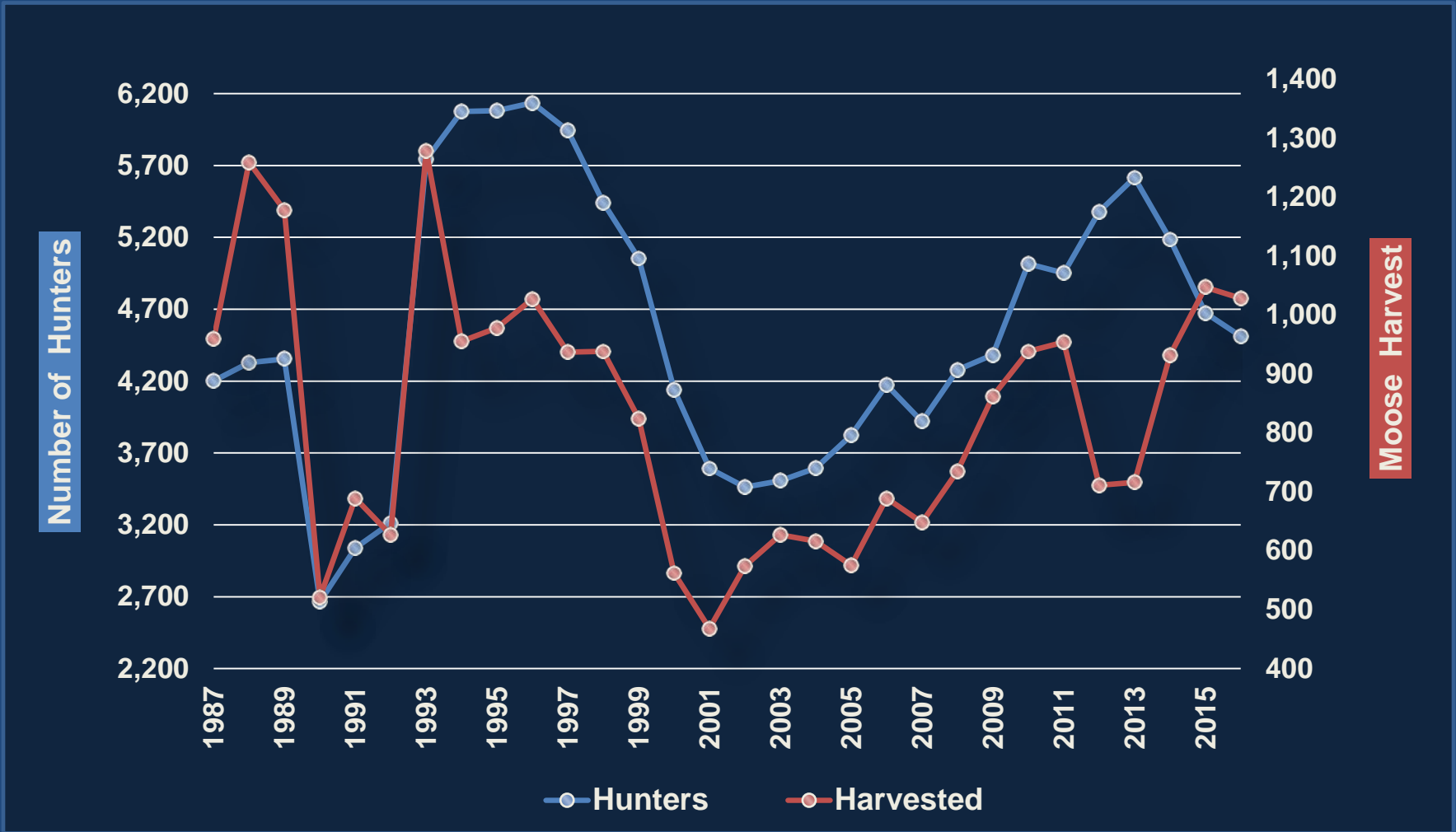
- **CM301 & RM319:** 1 bull (not implemented since 2014)

Tier I Registration: 1 moose per household; unlimited number of permits; Must demonstrate the household is engaged in a subsistence pattern of use including reliance upon a wide diversity of fish and game resources from Unit 13 that provides substantial economic, cultural, social, and nutritional elements of the household's way of life and other criteria listed in 5AAC 99.010(b).

Proposal 32

13 Moose & Caribou

Unit 13 Moose Hunters & Reported Harvest State & Federal Hunts



- 1) Establish Tier I moose hunt and change application process for Tier I caribou;
- 2) Apply new process to Tier I moose permit application

Department Recommendation: **NEUTRAL**

Ahtna Tene Nené

Eliminate the community subsistence harvest hunt for moose in the Copper Basin Area *and* the December registration hunt for moose in Unit 13
and
modify the number of available drawing permits

Department Recommendation: **NEUTRAL**

Matanuska Valley AC

Proposed Change to Moose Hunt Structure

Residents

~~August 20–September 20~~

- ~~■ CSH (CM300) — 1 bull per person; 1 any-bull per every 3 households; up to 100 any bulls may be harvested by hunt participants; remaining bulls must be spike/fork, 50-inches, or 4 or more brow tines on at least one side~~

September 1–September 20

- **Harvest Ticket:** 1 bull with spike/fork, 50-inches, or 4 or more brow tines
- **DM324:** 1 bull by permit; up to 5 **100** permits annually

October 1–31 & March 1–31

- **DM325:** 1 antlerless moose by permit; up to 200 permits

~~December 1–December 31~~

- ~~■ **CM301 & RM319:** 1 bull (not implemented since 2014)~~

Proposed Change to Moose Hunt Structure (Continued)

Nonresidents

September 1–September 20

- **DM335–DM339**: 1 bull with 50-inch antlers or 4 or more brow tines on at least one side (up to ~~450~~ **100** permits)

2016 Moose Harvest by Hunt

	<u>Reports</u>	<u>Harvest</u>	<u>Success</u>
General Season	3,669	709	19%
Draw	57	30	53%
CSH	936	201	21%
Federal	681	100	15%
2016 Preliminary Harvest:		1,040	

Amount Necessary For Subsistence: 300-600

Eliminate the community subsistence harvest hunt for moose in the Copper Basin Area *and* the December registration hunt for moose in Unit 13
and
modify the number of available drawing permits

Department Recommendation: **NEUTRAL**

Matanuska Valley AC

A) Eliminate the community subsistence harvest hunt for moose in the Copper Basin Area

or

B) Modify season dates and eliminate “any bull” tags

Department Recommendation: **NEUTRAL**

Public Proposal

A) Proposed Change to Moose Hunt Structure

Residents

August 20-September 20

- ~~CSH (CM300): 1 bull per person; 1 any-bull per every 3 households; up to 100 any bulls may be harvested by hunt participants; remaining bulls must be spike/fork, 50-inches, or 4 or more brow tines on at least one side~~

September 1–September 20

- **Harvest Ticket:** 1 bull with spike/fork, 50-inches, or 4 or more brow tines on at least one side
- **DM324:** 1 bull by permit; up to 5 permits annually

October 1–31 & March 1–31

- **DM325:** 1 antlerless moose by permit; up to 200 permits

December 1–December 31

- ~~CM301 & RM319:~~ 1 bull (not implemented since 2014)

B) Proposed Change to Moose Hunt Structure

Residents

~~August 20~~ *September 1–September 20*

- **CSH (CM300):** ~~any bulls may be harvested by hunt participants;~~ remaining bulls must be **1 bull with spike/fork, 50-inches, or 4 or more brow tines on at least one side**
- **Harvest Ticket:** 1 bull with spike/fork, 50-inches, or 4 or more brow tines on at least one side
- **DM324:** 1 bull by permit; up to 5 permits annually

October 1–31 & March 1–31

- **DM325:** 1 antlerless moose by permit; up to 200 permits

December 1–December 31

- **CM301 & RM319:** 1 bull (not implemented since 2014)

A) Eliminate the community subsistence harvest hunt for moose in the Copper Basin Area

or

B) Modify season dates and eliminate “any bull” tags

Department Recommendation: **NEUTRAL**

Public Proposal

- A) Eliminate the community subsistence harvest hunt for moose in the Copper Basin Area
- or
- B) Modify season dates and bag limit

Department Recommendation: **NEUTRAL**

Public Proposal

(A) Proposed Change to Moose Hunt Structure

Residents

~~August 20–September 20~~

- ~~■ CSH (CM300) — 1 bull per person; 1 any-bull per every 3 households; up to 100 any bulls may be harvested by hunt participants; remaining bulls must be spike/fork, 50-inches, or 4 or more brow tines on at least one side~~

September 1–September 20

- **Harvest Ticket:** 1 bull with spike/fork, 50-inches, or 4 or more brow tines
- **DM324:** 1 bull by permit; up to 5 permits annually

October 1–31 & March 1–31

- **DM325:** 1 antlerless moose by permit; up to 200 permits

December 1–December 31

- ~~■ **CM301 & RM319:** 1 bull (not implemented since 2014)~~

(B) Proposed Change to Moose Hunt Structure

Residents

August 20–September 1–September 20

- **CSH (CM300):** 1 bull with spike/fork, 50-inches, or 4 or more brow tines; **1 moose per group; meat distributed by group coordinator**
- **Harvest Ticket:** 1 bull with spike/fork, 50-inches, or 4 or more brow tines on at least one side
- **DM324:** 1 bull by permit; up to 5 permits annually

October 1–October 31 & March 1–March 31

- **DM325:** 1 antlerless moose by permit; up to 200 permits

December 1–December 31

- **CM301 & RM319:** 1 bull (not implemented since 2014)

Bull-to-Cow ratios observed in Unit 13

Regulatory Year	Bulls:100 Cows				
	13A	13B	13C	13D	13E
2012	26	34	30	67	39
2013	21	39	44	89	30
2014	28	35	37	69	33
2015	25	37	30	58	30
2016	20	34	34	89	39

- A) Eliminate the community subsistence harvest hunt for moose in the Copper Basin Area
- or
- B) Modify season dates and bag limit

Department Recommendation: **NEUTRAL**

Public Proposal

Modify the season dates for the community subsistence harvest hunt for moose in the Copper Basin Area

Department Recommendation: **NEUTRAL**

Public Proposal

Proposed Moose Hunt Structure

Residents

September 1–September 20

- **Harvest Ticket:** 1 bull with spike/fork, 50-inches, or 4 or more brow tines
- **DM324:** 1 bull by permit; up to 5 permits annually

October 1–31 & March 1–31

- **DM325:** 1 antlerless moose by permit; up to 200 permits

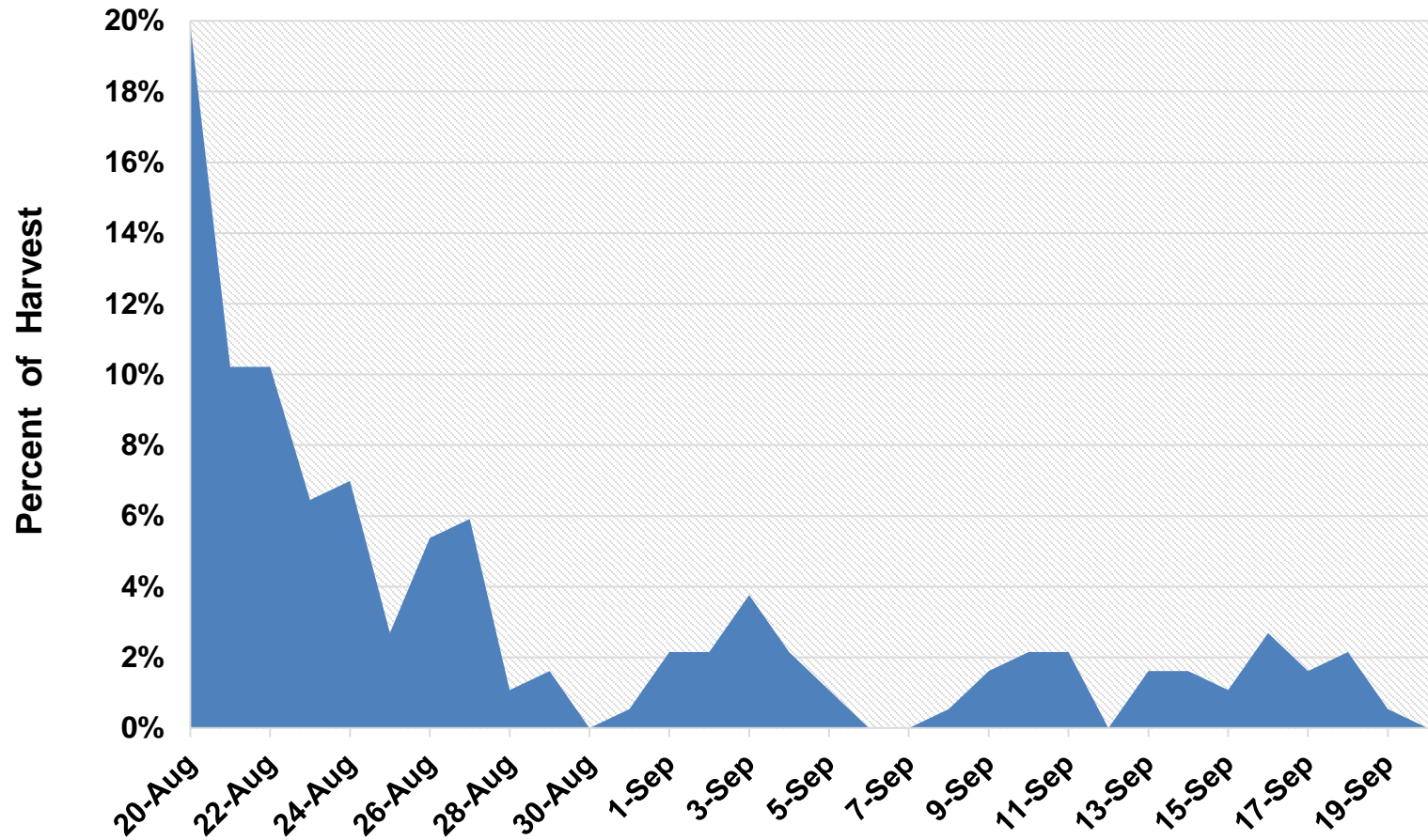
November 15–November 20

- **CSH (CM300):** 1 bull per person; 1 any-bull per every 3 households; up to 100 any bulls may be harvested by hunt participants; remaining bulls must be spike/fork, 50-inches, or 4 or more brow tines on at least one side

December 1–December 31

- **CM301 & RM319:** 1 bull (not implemented since 2014)

2016 CSH Moose Harvest Chronology



Modify the season dates for the community subsistence harvest hunt for moose in the Copper Basin Area

Department Recommendation: **NEUTRAL**

Public Proposal

- A) Eliminate the community subsistence harvest hunt for moose in the Copper Basin Area
- or
- B) Modify the season dates

Department Recommendation: **NEUTRAL**

Public Proposal

A) Proposed Moose Hunt Structure

Residents

~~August 20-September 20~~

- ~~▪ CSH (CM300) – 1 bull per person; 1 any-bull per every 3 households; up to 100 any bulls may be harvested by hunt participants; remaining bulls must be spike/fork, 50-inches, or 4 or more brow tines on at least one side~~

September 1–September 20

- **Harvest Ticket:** 1 bull with spike/fork, 50-inches, or 4 or more brow tines on at least one side
- **DM324:** 1 bull by permit; up to 5 permits annually

October 1–31 & March 1–31

- **DM325:** 1 antlerless moose by permit; up to 200 permits

December 1–December 31

- ~~▪ **CM301 & RM319:** 1 bull (not implemented since 2014)~~

(B) Proposed Moose Hunt Structure

Residents

September 1–September 20

- **Harvest Ticket:** 1 bull with spike/fork, 50-inches, or 4 or more brow tines
- **DM324:** 1 bull by permit; up to 5 permits annually

After general season hunt

- **CSH (CM300):** 1 bull per person; 1 any-bull per every 3 households; up to 100 any bulls may be harvested by hunt participants; remaining bulls must be spike/fork, 50-inches, or 4 or more brow tines on at least one side

October 1–October 31 & March 1–March 31

- **DM325:** 1 antlerless moose by permit; up to 200 permits

December 1–December 31

- **CM301 & RM319:** 1 bull (not implemented since 2014)

- A) Eliminate the community subsistence harvest hunt for moose in the Copper Basin Area
- or
- B) Modify the season dates

Department Recommendation: **NEUTRAL**

Public Proposal

A) Modify the season dates and hunt conditions for the community subsistence harvest hunt for moose in the Copper Basin Area

or

B) Eliminate the CSH and increase number of draw permits available

Department Recommendation: **NEUTRAL**

Public Proposal

A) Proposed CSH Moose Hunt Structure

Residents

~~August 2010–September 20~~ *August 25*

- **CSH (CM300):** 1 bull per person; 1 any-bull per every 3 households; up to 100 any bulls may be harvested by hunt participants; remaining bulls must be spike/fork, 50-inches, or 4 or more brow tines on at least one side; *destroy trophy value of antlers*
- *Participants cannot hunt general season for moose*

September 1–September 20

- **Harvest Ticket:** 1 bull with spike/fork, 50-inches, or 4 or more brow tines on at least one side
- **DM324:** 1 bull by permit; up to 5 permits annually

October 1–October 31 & March 1–March 31

- **DM325:** 1 antlerless moose by permit; up to 200 permits

December 1–December 31

- ~~**CM301 & RM319:**~~ 1 bull (not implemented since 2014)

B) Proposed Moose Hunt Structure

Residents

August 20–September 20

- ~~CSH (CM300)~~

September 1–September 20

- **Harvest Ticket:** 1 bull with spike/fork, 50-inches, or 4 or more brow tines on at least one side
- **DM324:** 1 bull by permit; > 5 permits annually

October 1–October 31 & March 1–March 31

- **DM325:** 1 antlerless moose by permit; >200 permits

December 1–December 31

- ~~CM301 & RM319:~~ 1 bull (not implemented since 2014)

Nonresidents

September 1–September 20

- **DM335–DM339:** 1 bull with 50-inch antlers or 4 or more brow tines on at least one side (up to 150 permits; effect on NR Draws permits unspecified)

A) Modify the season dates and hunt conditions for the community subsistence harvest hunt for moose in the Copper Basin Area

or

B) Eliminate the CSH and increase number of draw permits available

Department Recommendation: **NEUTRAL**

Public Proposal

Eliminate the community subsistence harvest hunt
for moose in the Copper Basin Area
and
replace with Tier II *or* registration hunt

Department Recommendation: **NEUTRAL**

Public Proposal

Proposed Moose Hunt Structure

Residents

August 20–September 20

- ~~CSH (CM300): CSH (CM300) — 1 bull per person; 1 any-bull per every 3 households; up to 100 any bulls may be harvested by hunt participants; remaining bulls must be spike/fork, 50-inches, or 4 or more brow tines on at least one side~~
- **Tier II or Registration hunt with registration available locally**

September 1–September 20

- **Harvest Ticket:** 1 bull with spike/fork, 50-inches, or 4 or more brow tines on at least one side
- **DM324:** 1 bull by permit; up to 5 permits annually

October 1–October 31 & March 1–March 31

- **DM325:** 1 antlerless moose by permit; up to 200 permits

December 1 – December 31

- ~~CM301 & RM319:~~ 1 bull (not implemented since 2014)

Eliminate the community subsistence harvest hunt
for moose in the Copper Basin Area
and
replace with Tier II *or* registration hunt

Department Recommendation: **NEUTRAL**

Public Proposal

Eliminate the community subsistence harvest
hunt for moose in the Copper Basin Area
and
Replace with registration hunt

Department Recommendation: **NEUTRAL**

Alaska Outdoor Council

Proposed Moose Hunt Structure

Residents

August 25–September 20 & December 1–December 31

- **Registration Hunt:** 1 bull per household every 3 regulatory years; up to 100 any bulls annually; general season antler restrictions apply for permit holders after any bull quota is met; no restriction when not participating in the registration hunt.

September 1–September 20

- **Harvest Ticket:** 1 bull with spike/fork, 50-inches, or 4 or more brow tines
- **DM324:** 1 bull by permit; up to 5 permits annually

October 1–October 31 & March 1–March 31

- **DM325:** 1 antlerless moose by permit; up to 200 permits

December 1–December 31

- ~~CM301 & RM319:~~ 1 bull (not implemented since 2014)

Considerations

- ❑ Expect high participation
- ❑ Harvest may not be sustainable
- ❑ Concerned over the ability to manage hunt

Eliminate the community subsistence harvest
hunt for moose in the Copper Basin Area
and
replace with registration hunt

Department Recommendation: **NEUTRAL**

Alaska Outdoor Council

Change the antler restrictions for the general season moose hunt in Unit 13 to spike/fork antlers or 4 or more brow tines on at least one side only

Department Recommendation:

- ❑ **NEUTRAL** on the allocation
- ❑ **OPPOSED** to limiting Unit 13 general season moose harvest to only spike-fork or 4 or more brow tines on at least one side

Public Proposal

Proposed Change to Moose Hunt Structure

Residents

August 20–September 20

- **CSH (CM300):** 1 bull per person; 1 “any bull” per every 3 households; up to 100 any bulls may be harvested by hunt participants; remaining bulls must be spike/fork, 50-inches, or 4 or more brow tines on at least one side

September 1–September 20

- **Harvest Ticket:** 1 bull with spike/fork, ~~50-inches~~, or 4 or more brow tines
- **DM324:** 1 bull by permit; up to 5 permits annually

October 1–October 31 & March 1–March 31

- **DM325:** 1 antlerless moose by permit; up to 200 permits

December 1–December 31

- **CM301 & RM319:** 1 bull (not implemented since 2014)

General season moose harvest in Unit 13

Regulatory Year	Moose with 4 or more brow tines on at least one side	Moose with antlers 50" or greater	Moose with antlers 50" or greater and 4 or more brow tines on at least one side ^a
2012	153	217	89
2013	118	192	54
2014	257	345	131
2015	287	436	191
2016 ^b	263	332	151

^a Some reports do not include both antler width data and number of brow tines.

^b Harvest data is not finalized

Change the antler restrictions for the general season moose hunt in Unit 13 to spike/fork antlers or 4 or more brow tines on at least one side only

Department Recommendation:

- ❑ **NEUTRAL** on the allocation
- ❑ **OPPOSED** to limiting Unit 13 general season moose harvest to only spike-fork or 4 or more brow tines on at least one side

Public Proposal

Change the antler restrictions for the general season moose hunt in Unit 13 to spike/fork, 50", 3 or more brow tines on each side, or 4 or more brow tines on at least one side

Department Recommendation:

- ❑ **OPPOSED** to increased harvest of mid-class bulls unitwide

Public Proposal

Proposed Change to Moose Hunt Structure

Residents

August 20–September 20

- **CSH (CM300):** 1 bull per person; 1 “any bull” per every 3 households; up to 100 any bulls may be harvested by hunt participants; remaining bulls must be spike/fork, 50-inches, or 4 or more brow tines on at least one side

September 1–September 20

- **Harvest Ticket:** 1 bull with spike/fork, 50-inches, **3 brow tines on each side (3x3)**, or 4 or more brow tines on at least one side
- **DM324:** 1 bull by permit; up to 5 permits annually

October 1–October 31 & March 1–March 31

- **DM325:** 1 antlerless moose by permit; up to 200 permits

December 1–December 31

- **CM301 & RM31:** 1 bull (not implemented since 2014)

2016 Composition survey in Trend Count Area 13

(13A; 581 mi²)

Total Bulls Observed:	159
Bulls 50" or greater:	0 (0%)
Spike/fork bulls:	33 (21%)
3x3 bulls:	14 (9%)
Bulls:100 Cows:	20

Change the antler restrictions for the general season moose hunt in Unit 13 to spike/fork, 50", 3 or more brow tines on each side, or 4 or more brow tines on at least one side

Department Recommendation:

- **OPPOSED** to increased harvest of mid-class bulls unitwide

Public Proposal

Change the antler restrictions for the general season moose hunt in Unit 13 to 36" antlers or larger

Department Recommendation:

- **OPPOSED** to increasing harvest of mid-class and large-class bulls unitwide, with no protection for age classes beyond 2 yrs

Public Proposal

Proposed Change to Moose Hunt Structure

Residents

August 20–September 20

- **CSH (CM300):** 1 bull per person; 1 “any bull” per every 3 households; up to 100 any bulls may be harvested by hunt participants; remaining bulls must be spike/fork, 50-inches, or 4 or more brow tines on at least one side

September 1–September 20

- **Harvest Ticket:** 1 bull with spike/fork, ~~50-inches, or 4 or more brow tines on at least one side~~ **36-inch antlers or larger**
- **DM324:** 1 bull by permit; up to 5 permits annually

October 1–October 31 & March 1–March 31

- **DM325:** 1 antlerless moose by permit; up to 200 permits

December 1–December 31

- **CM301 & RM319:** 1 bull (not implemented since 2014)

General Season Moose Harvest in Unit 13

Regulatory Year	Moose with antlers 50" or wider	Total Harvest	Percent of Harvest
2012	217	518	42%
2013	192	450	43%
2014	345	674	51%
2015	436	765	57%
2016	332	701	47%

Bull-to-Cow Ratios Observed in Unit 13

Regulatory Year	Bulls:100 Cows				
	13A	13B	13C	13D	13E
2012	26	34	30	67	39
2013	21	39	44	89	30
2014	28	35	37	69	33
2015	25	37	30	58	30
2016	20	34	34	89	39

Change the antler restrictions for the general season moose hunt in Unit 13 to 36" antlers or larger

Department Recommendation:

- **OPPOSED** to increasing harvest of mid-class and large-class bulls unitwide, with no protection for age classes beyond 2 yrs

Public Proposal

- 1) Eliminate the community subsistence harvest hunt for moose in the Copper Basin Area;
- 2) Change the general season dates (GM000); *and*
- 3) Adopt a registration hunt

Department Recommendation: **NEUTRAL**

Public Proposal

Proposed Change to Moose Hunt Structure

Residents

~~August 20–September 20~~

- ~~▪ **CSH (CM300):** 1 bull per person; 1 “any bull” per every 3 households; up to 100 any bulls may be harvested by hunt participants; remaining bulls must be spike/fork, 50-inches, or 4 or more brow tines on at least one side.~~

~~August 20–September 4–20~~

- ~~▪ **Harvest Ticket:** 1 bull with spike/fork, 50-inches, or 4 or more brow tines on at least one side (Unit 11 retains spike/fork, 50-inches, or 3 or more brow tines).~~

September 1–September 20

- **DM324:** 1 bull by permit; up to 5 permits annually

October 1–31 & March 1–31

- **DM325:** 1 antlerless moose by permit; up to 200 permits

December 1–December 31

- ~~▪ **CM301 & RM319:** 1 bull (not implemented since 2014)~~

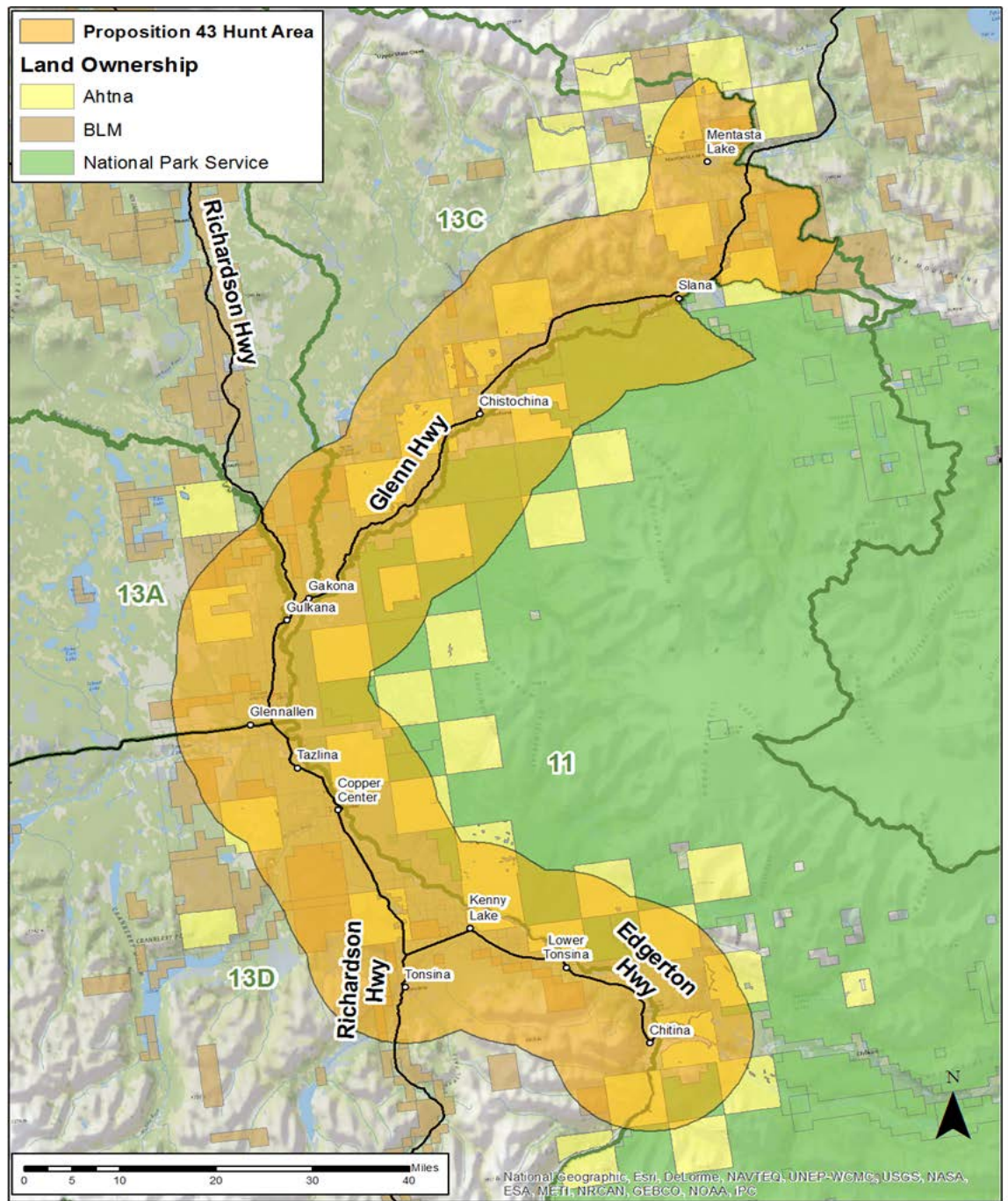
Proposed Change to Moose Hunt Structure (continued)

Residents

November 15–November 30

- **Registration hunt:** 1 “any bull” per permit; one registration permit per hunter; permits available starting October 1st.
 - Online first come, first serve registration:
 - Unit 11 up to 20 permits
 - Unit 13A West; up to 20 permits
 - Unit 13A East; up to 20 permits
 - Unit 13B; up to 50 permits
 - Unit 13C; up to 75 permits
 - Unit 13D; up to 75 permits
 - Unit 13E; up to 75 permits
 - In person, in Glennallen:
 - “Copper Valley Permit Area”; up to 500 permits

Proposed Hunt Area



- 1) Eliminate the community subsistence harvest hunt for moose in the Copper Basin Area;
- 2) change the general season dates (GM000); *and*
- 3) adopt a registration hunt

Department Recommendation: **NEUTRAL**

Public Proposal

Close the nonresident moose season in Unit 13

Department Recommendation: **NEUTRAL**

Resident Hunters of Alaska

Proposed Change to Moose Hunt Structure

Residents

August 20–September 20

- **CSH (CM300):** 1 bull per person; 1 “any bull” per every 3 households; up to 100 any bulls may be harvested by hunt participants; remaining bulls must be spike/fork, 50-inches, or 4 or more brow tines on at least one side

September 1–September 20

- **Harvest Ticket:** 1 bull with spike/fork, 50-inches, or 4 or more brow tines on at least one side
- **DM324:** 1 bull by permit; up to 5 permits annually

October 1–October 31 & March 1–March 31

- **DM325:** 1 antlerless moose by permit; up to 200 permits

December 1–December 31

- **CM301 & RM319:** 1 bull (not implemented since 2014)

Nonresidents

September 1–September 20

- ~~**DM335-DM339:** 1 bull with 50-inch antlers or 4 or more brow tines on at least one side (up to 150 permits)~~

Unit 13 Nonresident draw permits (DM335-339)

Year	Apps Received	Permits Issued	Total Harvest	Total Hunted	Success (Percent)
2009	224	50	12	33	36%
2010	393	110	13	60	22%
2011	428	65	16	35	46%
2012	751	105	9	57	16%
2013	873	105	18	60	30%
2014	905	115	20	69	29%
2015	1,205	115	23	60	38%
2016	517	115	21	58	36%
Annual Average	662	98	17	54	31%

Close the nonresident moose season in Unit 13

Department Recommendation: **NEUTRAL**

Resident Hunters of Alaska

Eliminate current caribou hunt structure in Unit 13
and
replace with registration hunt

Department Recommendation:

- ❑ **OPPOSED** to limiting ability to maximize caribou harvest prior to September 21st in Unit 13 during years of high caribou population

Public Proposal

Proposed Caribou Hunt Structure

Residents only

~~August 10–September 20 & October 21–March 31~~

- ~~**CSH (CC001):** 1 caribou per household; unlimited participation; extensive hunt requirements; up to 300 caribou may be taken~~
- ~~**Tier I registration (RC566):** 1 caribou per household; unlimited participation; must hunt moose in Unit 13~~

~~August 20–September 20 & October 21–March 31~~

- ~~**Draw (DC485):** up to 5,000 permits~~

August 1–September 30 & October 21–March 31

- **Federal permits:** 2 caribou per person on federal lands for residents of Units 11, 12, 13, 20A, 20D

Proposed Caribou Hunt Structure (continued)

Residents only

August 10–September 20 & October 21–March 31

- **Registration Hunt:** 1 caribou per regulatory year; up to 3,000 permits issued per period; 18 periods available (~1 week each during the fall; ~2 weeks each during the winter)
 - Registration is online; first come, first serve
 - Hunters may register for one hunt period at a time (honor system).
 - Hunters may register for additional period(s) that have permits available AFTER their current period has ended if they were unsuccessful.
 - Registration begins July 1

Chronology of State Nelchina Caribou Harvest

Year	Total Harvest	August 10 – September 20	October 20 – December 31	January 1 – March 31
2009	405	74%	16%	9%
2010	1,905	33%	67%	-
2011	2,032	89%	11%	-
2012	3,697	75%	18%	7%
2013 ^a	2,997	100%	-	-
2014	2,701	86%	10%	4%
2015	3,377	96%	4%	<1%
2016 ^b	4,941	81%	16%	3%

^a No winter hunt.

^b Fall season extended to 9/30/16; harvest is not finalized.

Eliminate current caribou hunt structure in Unit 13
and
replace with registration hunt

Department Recommendation:

- ❑ **OPPOSED** to limiting ability to maximize caribou harvest prior to September 21st in Unit 13 during years of high caribou population

Public Proposal

- 1) Eliminate the community subsistence harvest hunt for caribou in the Copper Basin Area (CC001);
- 2) Change bag limit for Tier I caribou (RC566); *and*
- 3) Change season dates for draw hunt (DC485)

Department Recommendation:

- **NEUTRAL** on the allocation
- **OPPOSED** to limiting ability to maximize caribou harvest prior to September 21st in Unit 13 during years of high caribou population.

Public Proposal

Proposed Caribou Hunt Structure

Residents only

August 10–September 20 & October 21–March 31

- ~~CSH (CC001): 1 caribou per household; unlimited participation; extensive hunt requirements; up to 300 caribou may be taken~~
- **Tier I registration (RC566): 4 Up to 2** caribou per household; unlimited participation; must hunt moose in Unit 13.

~~*August 20–September 20 & October 21–March 31*~~

- **Draw (DC485):** up to 5,000 permits

August 1–September 30 & October 21–March 31

- **Federal permits:** 2 caribou per person on federal lands for residents of Units 11, 12, 13, 20A, 20D

Chronology of State Nelchina Caribou Harvest

Year	Total Harvest	August 10 – September 20	October 20 – December 31	January 1 – March 31
2009	405	74%	16%	9%
2010	1,905	33%	67%	-
2011	2,032	89%	11%	-
2012	3,697	75%	18%	7%
2013 ^a	2,997	100%	-	-
2014	2,701	86%	10%	4%
2015	3,377	96%	4%	<1%
2016 ^b	4,941	81%	16%	3%

^a No winter hunt.

^b Fall season extended to 9/30/16; harvest is not finalized.

- 1) Eliminate the community subsistence harvest hunt for caribou in the Copper Basin Area (CC001);
- 2) Change bag limit for Tier I caribou (RC566); *and*
- 3) Change season dates for draw hunt (DC485)

Department Recommendation:

- ❑ **NEUTRAL** on the allocation
- ❑ **OPPOSED** to limiting ability to maximize caribou harvest prior to September 21st in Unit 13 during years of high caribou population.

Public Proposal

Eliminate the community subsistence harvest hunt
for moose in the Copper Basin Area
and
remove the requirement for Tier I caribou hunters to
hunt moose in Unit 13

Department Recommendation: **NEUTRAL**

Public Proposal

Proposed Moose Hunt Structure

Residents

August 20-September 20

- ~~CSH (CM300): 1 bull per person; 1 “any bull” per every 3 households; up to 100 any bulls may be harvested by hunt participants; remaining bulls must be spike/fork, 50-inches, or 4 or more brow tines on at least one side~~

September 1-September 20

- **Harvest Ticket:** 1 bull with spike/fork, 50-inches, or 4 or more brow tines on at least one side
- **DM324:** 1 bull by permit; up to 5 permits annually

October 1-October 31 and March 1-March 31

- **DM325:** 1 antlerless moose by permit; up to 200 permits

December 1-December 31

- ~~CM301 & RM319:~~ 1 bull (not implemented since 2014)

Proposed Caribou Hunt Structure

Residents only

August 10–September 20 & October 21–March 31

- **CSH (CC001):** 1 caribou per household; unlimited participation; extensive hunt requirements; up to 300 caribou may be taken
- **Tier I registration (RC566):** 1 caribou per household; unlimited participation; ~~must hunt moose in Unit 13.~~

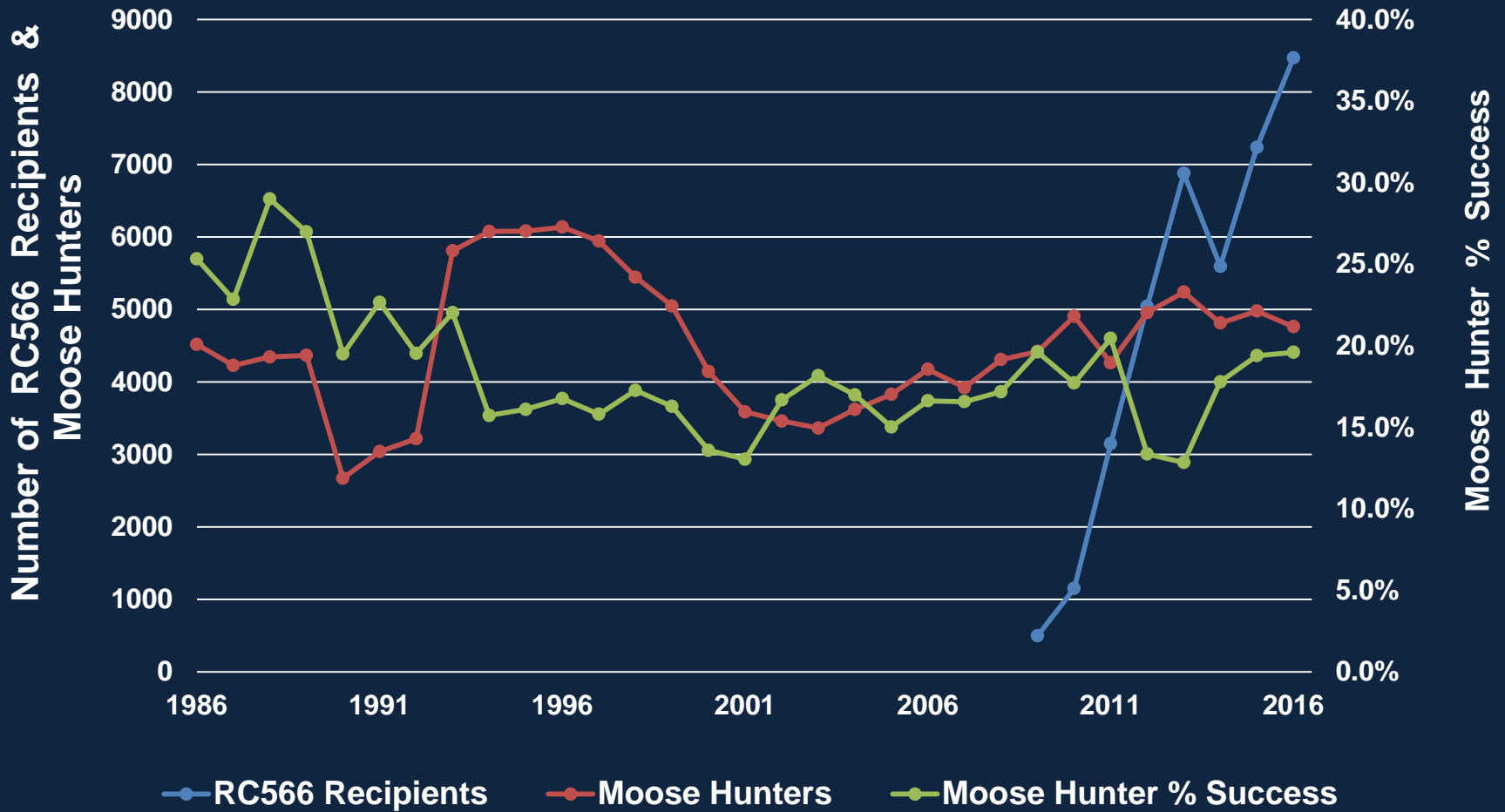
August 20–September 20 & October 21–March 31

- **Draw (DC485):** up to 5,000 permits

August 1–September 30 & October 21–March 31

- **Federal permits:** 2 caribou per person on federal lands for residents of Units 11, 12, 13, 20A, 20D

RC566 Recipients & Moose Hunters in Unit 13 vs. Moose Hunter % Success in State Hunts



Demand for RY2016 Nelchina Caribou Permits

Hunt	Eligible Permit Applications
Tier I (RC566) – 1 per household	8,470
CSH (CC001) – 1 per household	1,006
Draw (DC485) – 1 per person; up to 5,000	12,793
Total Applications:	22,269

Eliminate the community subsistence harvest hunt
for moose in the Copper Basin Area
and
remove the requirement for Tier I caribou hunters to
hunt moose in Unit 13

Department Recommendation: **NEUTRAL**

Public Proposal

- 1) Clarify the communities eligible for the community subsistence harvest hunt for caribou in the Copper Basin Area (CC001)
- 2) Increase the bag limit; *and*
- 3) Extend the season

Department Recommendation: **NEUTRAL**

Ahtna Tene Nené

Proposed Change to Caribou Hunt Structure

Residents only

August 10–September 20 30 & October 21–March 31

- **CSH (CC001):** 4 2 caribou per household; unlimited participation; extensive hunt requirements; up to 300 caribou may be taken by members of the eligible community identified pursuant 5 AAC 92.074(d).
- **Tier I registration (RC566):** 1 caribou per household; unlimited participation; must hunt moose in Unit 13

August 20–September 20 & October 21–March 31

- **Draw (DC485):** up to 5,000 permits

August 1–September 30 & October 21–March 31

- **Federal permits:** 2 caribou per person on federal lands for residents of Units 11, 12, 13, 20A, 20D

- 1) Clarify the communities eligible for the community subsistence harvest hunt for caribou in the Copper Basin Area (CC001)
- 2) Increase the bag limit; *and*
- 3) Extend the season

Department Recommendation: **NEUTRAL**

Ahtna Tene Nené

Extend seasons and change bag limits for all
Unit 13 caribou hunts
and
establish a youth hunt

Department Recommendation: **NEUTRAL**

Public Proposal

Proposed Change to Caribou Hunt Structure

Residents only

August 1–August 20

- **Youth Hunt**

August 10–September 20 and October 21–March 31

- **CSH (CC001):** 1 caribou per household; 1 additional caribou per household starting October 1st; unlimited participation; stringent hunt requirements; up to 300 caribou may be taken.
- **Tier I registration (RC566):** 1 caribou per household; 1 additional caribou per household starting October 1st; unlimited participation; must hunt moose in Unit 13.
- **Draw (DC485):** up to 5,000 permits; 1 caribou; 1 additional caribou per permit starting October 1st.

Extend seasons and change bag limits for all
Unit 13 caribou hunts
and
establish a youth hunt

Department Recommendation: **NEUTRAL**

Public Proposal

Eliminate draw hunt for caribou in Unit 13 (DC485)
and
remove the requirement that Tier I caribou hunters
hunt moose in Unit 13

Department Recommendation: **NEUTRAL**

Public Proposal

Proposed Change to Caribou Hunt Structure

Residents only

August 10–September 20 & October 21–March 31

- **CSH (CC001):** 1 caribou per household; unlimited participation; extensive hunt requirements; up to 300 caribou may be taken
- Tier I registration (RC566): 1 caribou per household; unlimited participation; **must hunt moose in Unit 13**

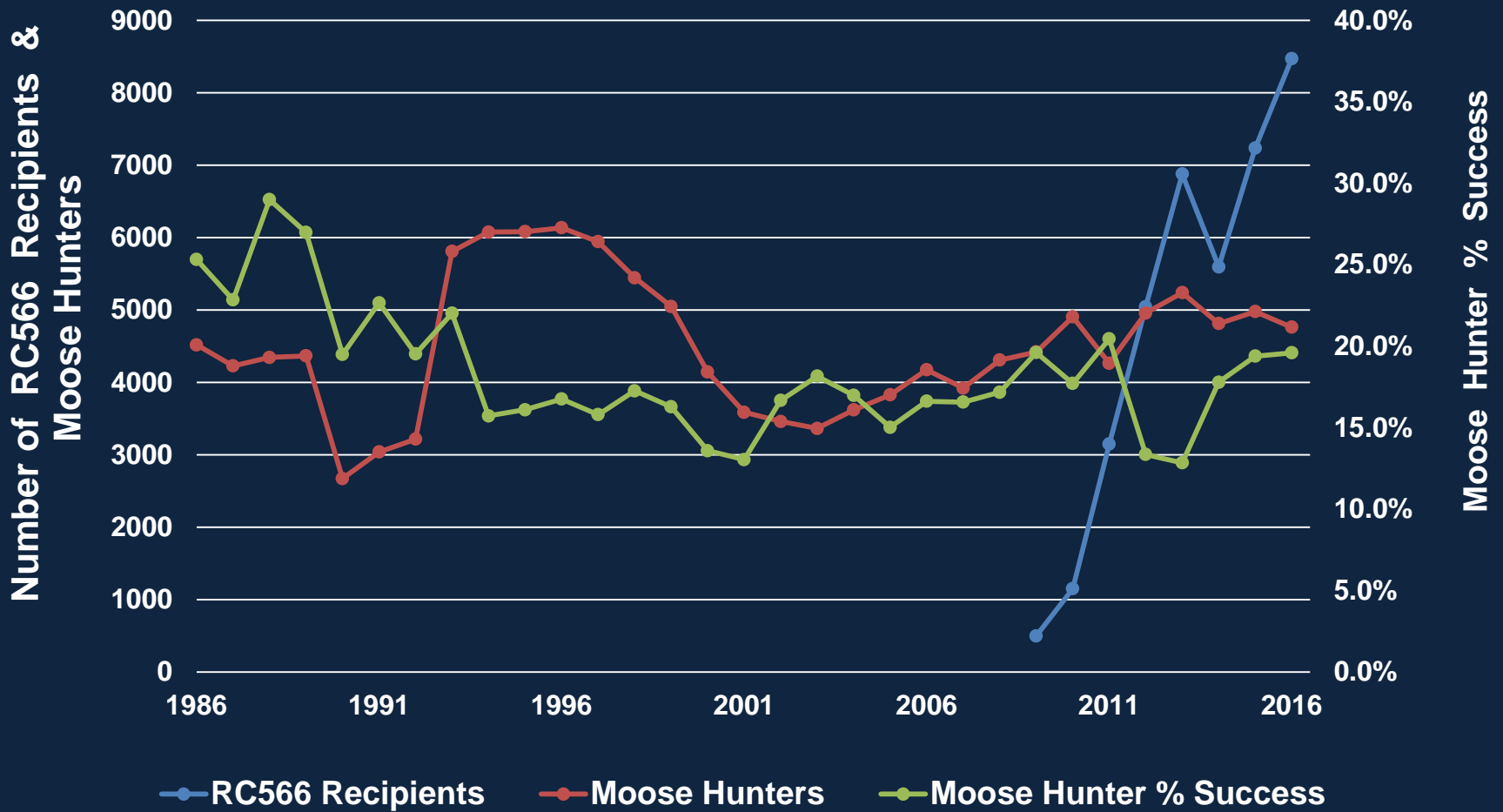
~~*August 20–September 20 & October 21–March 31*~~

- ~~▪ **Draw (DC485):** up to 5,000 permits~~

August 1–September 30 & October 21–March 31

- **Federal permits:** 2 caribou per person on federal lands for residents of Units 11, 12, 13, 20A, 20D

RC566 Recipients & Moose Hunters in Unit 13 vs. Moose Hunter % Success in State Hunts



Demand for RY2016 Nelchina Caribou Permits

Hunt	Eligible Permit Applications
Tier I (RC566) – 1 per household	8,470
CSH (CC001) – 1 per household	1,006
Draw (DC485) – 1 per person; up to 5,000	12,793
Total Applications:	22,269

Eliminate draw hunt for caribou in Unit 13 (DC485)
and
remove the requirement that Tier I caribou hunters
hunt moose in Unit 13

Department Recommendation: **NEUTRAL**

Public Proposal

Remove the requirement that Tier I caribou hunters hunt moose in Unit 13

Department Recommendation: **NEUTRAL**

Public Proposal

Proposed Change to Caribou Hunt Structure

Residents only

August 10–September 20 & October 21–March 31

- **CSH (CC001):** 1 caribou per household; unlimited participation; extensive hunt requirements; up to 300 caribou may be taken
- **Tier I registration (RC566):** 1 caribou per household; unlimited participation; must hunt moose in Unit 13.

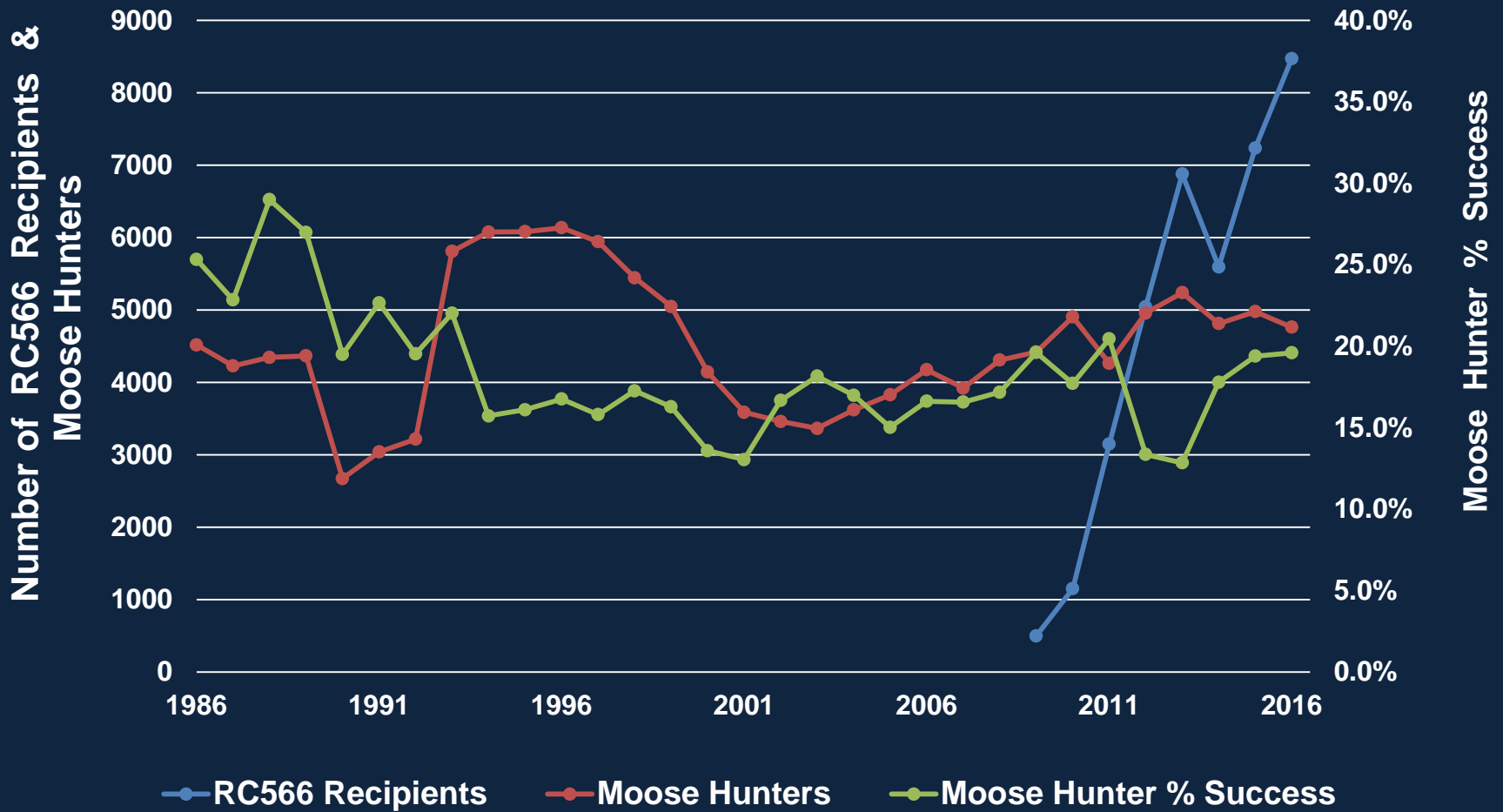
August 20–September 20 & October 21–March 31

- **Draw (DC485):** up to 5,000 permits

August 1–September 30 & October 21–March 31

- **Federal permits:** 2 caribou per person on federal lands for residents of Units 11, 12, 13, 20A, 20D

RC566 Recipients & Moose Hunters in Unit 13 vs. Moose Hunter % Success in State Hunts



Demand for RY2016 Nelchina Caribou Permits

Hunt	Eligible Permit Applications
Tier I (RC566) – 1 per household	8,470
CSH (CC001) – 1 per household	1,006
Draw (DC485) – 1 per person; up to 5,000	12,793
Total Applications:	22,269

Remove the requirement that Tier I caribou hunters hunt moose in Unit 13

Department Recommendation: **NEUTRAL**

Public Proposal

Remove the requirement that Tier I caribou hunters hunt moose in Unit 13

Department Recommendation: **NEUTRAL**

Public Proposal

Remove the requirement that Tier I caribou hunters
hunt moose in Unit 13

and

change the season dates for caribou draw permits
in Unit 13 (DC485)

Department Recommendation: **NEUTRAL**

Public Proposal

Proposed Change to Caribou Hunt Structure

Residents only

August 10–September 20 & October 21–March 31

- **CSH (CC001):** 1 caribou per household; unlimited participation; extensive hunt requirements; up to 300 caribou may be taken
- **Tier I registration (RC566):** 1 caribou per household; unlimited participation; ~~must hunt moose in Unit 13.~~

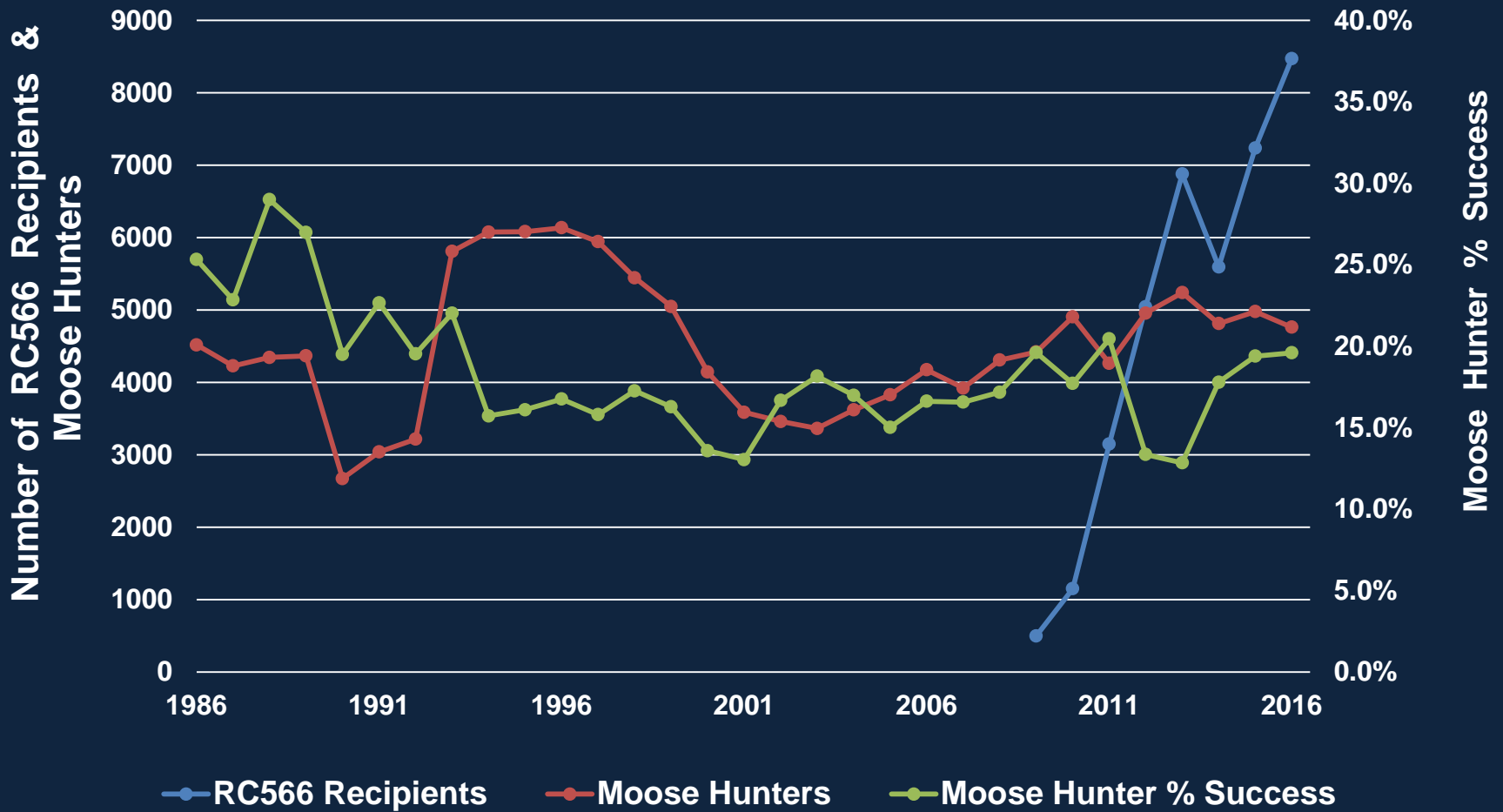
August 20–September 20 & October 21–March 31

- **Draw (DC485):** up to 5,000(?) permits issued for 2-week hunt periods per permit.

August 1–September 30 & October 21–March 31

- **Federal permits:** 2 caribou per person on federal lands for residents of Units 11, 12, 13, 20A, 20D

RC566 Recipients & Moose Hunters in Unit 13 vs. Moose Hunter % Success in State Hunts



Demand for RY2016 Nelchina Caribou Permits

Hunt	Eligible Permit Applications
Tier I (RC566) – 1 per household	8,470
CSH (CC001) – 1 per household	1,006
Draw (DC485) – 1 per person; up to 5,000	12,793
Total Applications:	22,269

Remove the requirement that Tier I caribou hunters
hunt moose in Unit 13

and

change the season dates for caribou draw permits
in Unit 13 (DC485)

Department Recommendation: **NEUTRAL**

Public Proposal

Change the season dates for caribou draw permits in Unit 13 (DC485)

Department Recommendation: **NEUTRAL**

Public Proposal

Proposed Change to Caribou Hunt Structure

Residents only

August 10–September 20 & October 21–March 31

- **CSH (CC001):** 1 caribou per household; unlimited participation; extensive hunt requirements; up to 300 caribou may be taken
- **Tier I registration (RC566):** 1 caribou per household; unlimited participation; must hunt moose in Unit 13

August 20–September 20 & ~~October 21–March 31~~

- **Draw (DC485):** up to 5,000 permits

August 1–September 30 & October 21–March 31

- **Federal permits:** 2 caribou per person on federal lands for residents of Units 11, 12, 13, 20A, 20D

Change the season dates for caribou draw permits in Unit 13 (DC485)

Department Recommendation: **NEUTRAL**

Public Proposal

Eliminate the community hunt in Unit 13 for moose and caribou effective January 1, 2017

Department Recommendation: **NEUTRAL**

Copper Basin AC

Stated Issues:

- ❑ Enforcement
- ❑ Crowding and garbage
- ❑ Impacts on other species other than moose & caribou

Current Caribou Hunt Structure

Residents only

August 10–September 20 & October 21–March 31

- **CSH (CC001):** 1 caribou per household; unlimited participation; extensive hunt requirements; up to 300 caribou may be taken
- **Tier I registration (RC566):** 1 caribou per household; unlimited participation; must hunt moose in Unit 13.

August 20–September 20 & October 21–March 31

- **Draw (DC485):** up to 5,000 permits

August 1–September 30 & October 21–March 31

- **Federal permits:** 2 caribou per person on federal lands for residents of Units 11, 12, 13, 20A, 20D

Proposed Caribou Hunt Structure

Residents only

August 10–September 20 & October 21–March 31

- ~~CSH (CC001): 1 caribou per household; unlimited participation; extensive hunt requirements; up to 300 caribou may be taken~~
- **Tier I registration (RC566):** 1 caribou per household; unlimited participation; must hunt moose in Unit 13

August 20–September 20 & October 21–March 31

- **Draw (DC485)** – up to 5,000 permits

August 1–September 30 & October 21–March 31

- **Federal permits:** 2 caribou per person on federal lands for residents of Units 11, 12, 13, 20A, 20D

Current Moose Hunt Structure

Residents

August 20–September 20

- **CSH (CM300):** 1 bull per person; 1 any-bull per every 3 households; up to 100 any bulls may be harvested by hunt participants; remaining bulls must be spike/fork, 50-inches, or 4 or more brow tines on at least one side.

September 1–September 20

- **Harvest Ticket:** 1 bull with spike/fork, 50-inches, or 4 or more brow tines on at least one side
- **DM324:** 1 bull by permit; up to 5 permits annually

October 1–31 & March 1–31

- **DM325:** 1 antlerless moose by permit; up to 200 permits

Current Moose Hunt Structure (continued)

Residents (cont'd)

December 1–December 31

- **CM301 & RM319:** 1 bull (not implemented since 2014)

August 1-September 20

- **Federal permits :** 1 bull per household in 13E or 1 bull per person in the remainder of Unit 13; by permit on federal lands for residents of Units 12, 13, 20A, 20D.

Proposed Moose Hunt Structure

Residents

August 20–September 20

- ~~CSH (CM300): 1 bull per person; 1 any-bull per every 3 households; up to 100 any bulls may be harvested by hunt participants; remaining bulls must be spike/fork, 50-inches, or 4 or more brow tines on at least one side~~

September 1–September 20

- **Harvest Ticket:** 1 bull with spike/fork, 50-inches, or 4 or more brow tines on at least one side
- **DM324:** 1 bull by permit; up to 5 permits annually

October 1–31 & March 1–31

- **DM325:** 1 antlerless moose by permit; up to 200 permits

December 1–December 31

- ~~CM301 & RM319:~~ 1 bull (not implemented since 2014)

Eliminate the community hunt in Unit 13 for moose and caribou effective January 1, 2017

Department Recommendation: **NEUTRAL**

Copper Basin AC

Stated Issues:

- ❑ Enforcement
- ❑ Crowding and garbage
- ❑ Impacts on other species other than moose & caribou

Eliminate the community subsistence harvest hunts for the Copper Basin Area

Department Recommendation: **NEUTRAL**

Anchorage AC

Stated Issues:

- ❑ Hunt is not meeting objectives
 - ❑ Impacts workload of staff
-

Eliminate the community subsistence harvest hunts for the Copper Basin Area

Department Recommendation: **NEUTRAL**

Public Proposal

Stated Issue:

- System is being taken advantage of
-

Eliminate the community subsistence harvest
hunts for the Copper Basin Area

Department Recommendation: **NEUTRAL**

Public Proposal

Stated Issue: Unspecified

Eliminate the community subsistence harvest hunts for the Copper Basin Area

Department Recommendation: **NEUTRAL**

Public Proposal

Stated Issues:

- ❑ Overharvest
- ❑ Not being used as intended

Eliminate the community subsistence harvest hunts for the Copper Basin Area

Department Recommendation: **NEUTRAL**

Public Proposal

Stated Issues:

- ❑ Overharvest
- ❑ Inaccurate reporting

Eliminate the community subsistence harvest hunt for moose in the Copper Basin Area

and

retain general season with spike/fork, 50-inch antlers or 4 or more brow tines on at least one side only

Department Recommendation: **NEUTRAL**

Ahtna Tene Nené

Proposed Change to Moose Hunt Structure

Residents

~~August 20–September 20~~

- ~~▪ CSH (CM300): 1 bull per person; 1 any-bull per every 3 households; up to 100 any bulls may be harvested by hunt participants; remaining bulls must be spike/fork, 50-inches, or 4 or more brow tines on at least one side.~~

September 1–September 20

- **Harvest Ticket:** 1 bull with spike/fork, 50-inches, or 4 or more brow tines on at least one side
- DM324: 1 bull by permit; up to 5 permits annually

October 1–October 31 & March 1–March 31

- DM325: 1 antlerless moose by permit; up to 200 permits

December 1–December 31

- ~~▪ CM301 & RM319: 1 bull (not implemented since 2014)~~

Nonresidents

September 1–September 20

- **DM335-DM339:** 1 bull with 50-inch antlers or 4 or more brow tines on at least one side (up to 150 permits)

Eliminate the community subsistence harvest hunt for moose in the Copper Basin Area

and

retain general season with spike/fork, 50-inch antlers or 4 or more brow tines on at least one side only

Department Recommendation: **NEUTRAL**

Ahtna Tene Nené

- A) Eliminate the community subsistence harvest hunt for moose in the Copper Basin Area
- or*
- B) Change the bag limit and hunt area

Department Recommendation: **NEUTRAL**

Public Proposal

A) Proposed Moose Hunt Structure

Residents

August 20-September 20

- ~~CSH (CM300) — 1 bull per person; 1 “any bull” per every 3 households; up to 100 any bulls may be harvested by hunt participants; remaining bulls must be spike/fork, 50-inches, or 4 or more brow tines on at least one side~~

September 1–20 September

- **Harvest Ticket:** 1 bull with spike/fork, 50-inches, or 4 or more brow tines on at least one side
- **DM324:** 1 bull by permit; up to 5 permits annually

October 1–October 31 & March 1–March 31

- **DM325:** 1 antlerless moose by permit; up to 200 permits

December 1–December 31

- ~~**CM301 & RM319:** 1 bull (not implemented since 2014)~~

(B) Proposed Moose Hunt Structure

Residents

August 20–September 20

- **CSH (CM300):** ~~1 bull per person; 1 “any bull” per every 3 households; up to 100 any bulls may be harvested by hunt participants; participants must hunt within 50 miles of their community of residence~~ remaining bulls must be spike/fork, 50-inches, or 4 or more brow tines on at least one side.

September 1–September 20

- **Harvest Ticket:** 1 bull with spike/fork, 50-inches, or 4 or more brow tines on at least one side
- **DM324:** 1 bull by permit; up to 5 permits annually

October 1–October 31 & March 1–March 31

- **DM325:** 1 antlerless moose by permit; up to 200 permits

December 1–December 31

- **CM301:** 1 bull **participants must hunt within 50 miles of their community of residence** (not implemented since 2014)
- **RM319:** 1 bull (not implemented since 2014)

- A) Eliminate the community subsistence harvest hunt for moose in the Copper Basin Area
- or*
- B) Change the bag limit and hunt area

Department Recommendation: **NEUTRAL**

Public Proposal

Eliminate the community subsistence harvest hunt for moose in the Copper Basin Area

Department Recommendation: **NEUTRAL**

Denali AC

Stated Issues:

- ❑ Overharvest
- ❑ Hunt is difficult to maintain and is unnecessary
- ❑ Any bull reporting is inaccurate

Current Moose Hunt Structure

Residents

August 20–September 20

- **CSH (CM300):** 1 bull per person; 1 any-bull per every 3 households; up to 100 any bulls may be harvested by hunt participants; remaining bulls must be spike/fork, 50-inches, or 4 or more brow tines on at least one side

September 1–September 20

- **Harvest Ticket:** 1 bull with spike/fork, 50-inches, or 4 or more brow tines on at least one side
- **DM324:** 1 bull by permit; up to 5 permits annually

October 1–31 & March 1–31

- **DM325:** 1 antlerless moose by permit; up to 200 permits

December 1–December 31

- **CM301 & RM319:** 1 bull (not implemented since 2014)

Proposed Moose Hunt Structure

Residents

~~August 20–September 20~~

- ~~▪ **CSH (CM300):** 1 bull per person; 1 any-bull per every 3 households; up to 100 any bulls may be harvested by hunt participants; remaining bulls must be spike/fork, 50-inches, or 4 or more brow tines on at least one side~~

September 1–September 20

- **Harvest Ticket:** 1 bull with spike/fork, 50-inches, or 4 or more brow tines on at least one side
- **DM324:** 1 bull by permit; up to 5 permits annually

October 1–31 & March 1–31

- **DM325:** 1 antlerless moose by permit; up to 200 permits

December 1–December 31

- ~~▪ **CM301 & RM319:** 1 bull (not implemented since 2014)~~

Population Objectives & Current Estimates

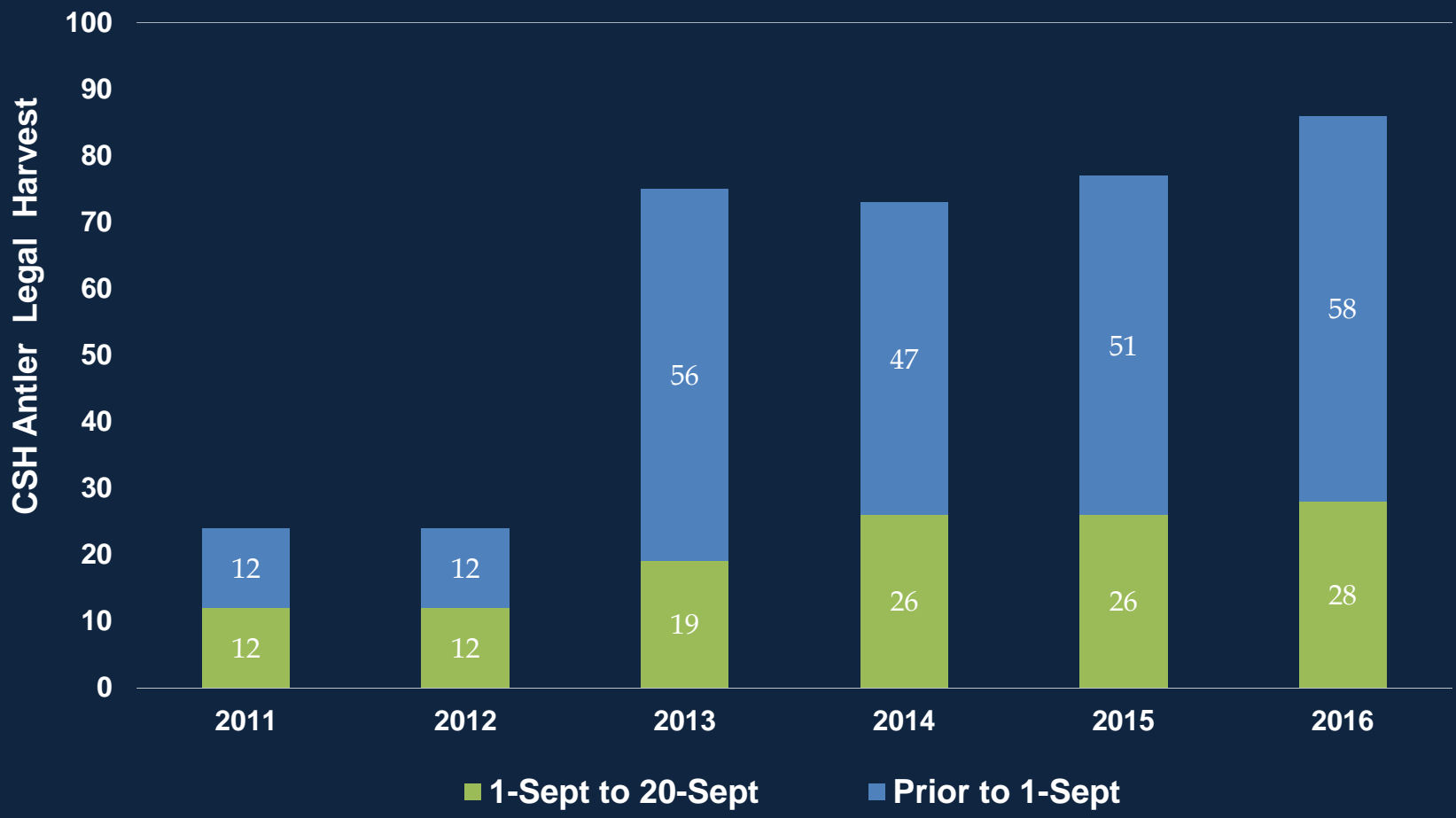
Subunit	Population	Harvest	Bull-to-cow
13A	3,500-4,200	210-420	25 : 100
2015	3,568	335	25 : 100
13B	5,300-6,300	310-620	25 : 100
2015	4,760 (+530)	243	37 : 100
13C	2,000-3,000	155-350	25 : 100
2015	2,184	115	30 : 100
13D*	1,200-1,900	75-190	No obj.
2015	948	78	58 : 100
13E	5,000-6,000	300-600	25 : 100
2015	5,085	192	30 : 100

*13D is outside of wolf predation control area

Bull-to-Cow ratios observed in Unit 13

Regulatory Year	Bulls:100 Cows				
	13A	13B	13C	13D	13E
2012	26	34	30	67	39
2013	21	39	44	89	30
2014	28	35	37	69	33
2015	25	37	30	58	30
2016	20	34	34	89	39

Antler-Legal Moose Harvested by CSH Hunters Before & After September 1



Eliminate the community subsistence harvest hunt for moose in the Copper Basin Area

Department Recommendation: **NEUTRAL**

Denali AC

Stated Issues:

- ❑ Overharvest
- ❑ Hunt is difficult to maintain and is unnecessary
- ❑ Any bull reporting is inaccurate

Eliminate the community subsistence harvest hunt for moose in the Copper Basin Area

Or

Conduct population survey and divide CM300 permits among Unit 13 subunits proportionally to the population of moose in each area

Department Recommendation: **NEUTRAL**

Public Proposal

Proposed Change to Moose Hunt Structure

Residents

August 20-September 20

- ~~CSH (CM300): 1 bull per person; 1 any-bull per every 3 households; up to 100 any bulls may be harvested by hunt participants; remaining bulls must be spike/fork, 50-inches, or 4 or more brow tines on at least one side~~

September 1-September 20

- **Harvest Ticket:** 1 bull with spike/fork, 50-inches, or 4 or more brow tines on at least one side
- **DM324:** 1 bull by permit; up to 5 permits annually

October 1-31 & March 1-31

- **DM325:** 1 antlerless moose by permit; up to 200 permits

December 1-December 31

- ~~CM301 & RM319:~~ 1 bull (not implemented since 2014)

Eliminate the community subsistence harvest hunt for moose in the Copper Basin Area

Or

Conduct population survey and divide CM300 permits among Unit 13 subunits proportionally to the population of moose in each area

Department Recommendation: **NEUTRAL**

Public Proposal

Eliminate the community subsistence harvest hunt for moose in the Copper Basin Area

Department Recommendation: **NEUTRAL**

Public Proposal

Stated Issue:

- Competition with non-local hunters
-

Eliminate the community subsistence harvest hunt for moose in the Copper Basin Area

Department Recommendation: **NEUTRAL**

Public Proposal

Stated Issues:

- ❑ Overharvest
- ❑ CSH creates an unfair advantage

Eliminate the community subsistence harvest hunt for moose in the Copper Basin Area

Department Recommendation: **NEUTRAL**

Public Proposal

Stated Issue:

- Allocation or overharvest
-

Eliminate the community subsistence harvest hunt for moose in the Copper Basin Area and issue more drawing tags

Department Recommendation: **NEUTRAL**

Public Proposal

Stated Issue:

- Participation based on longer season and any-bull option
-

Eliminate the community subsistence harvest hunt for caribou in the Copper Basin Area (CC001)

Department Recommendation: **NEUTRAL**

Public Proposal

Stated Issues:

- ❑ Hunt is not meeting objectives
 - ❑ Impacts workload of staff
-

Eliminate the community subsistence harvest hunt for caribou in the Copper Basin Area (CC001)

Department Recommendation: **NEUTRAL**

Alaska Outdoor Council

Stated Issues:

- ❑ Hunt is not meeting objectives
- ❑ Impacts workload of staff