

Kenai Peninsula GMUs 7&15

Soldotna

Area Biologist: Jeff Selinger

Technicians: Larry Lewis and Kurt Strausbaugh

Program Technician: Lynn Smith

Homer

Asst. Area Biologist: Jason Herreman

Program Technician: Carolyn Bunker

Research Biologist: Thomas McDonough

Asst. Research Biologist: Oriana Badajos:

Kenai Peninsula GMUs 7&15

Soldotna (Moose Research Center)

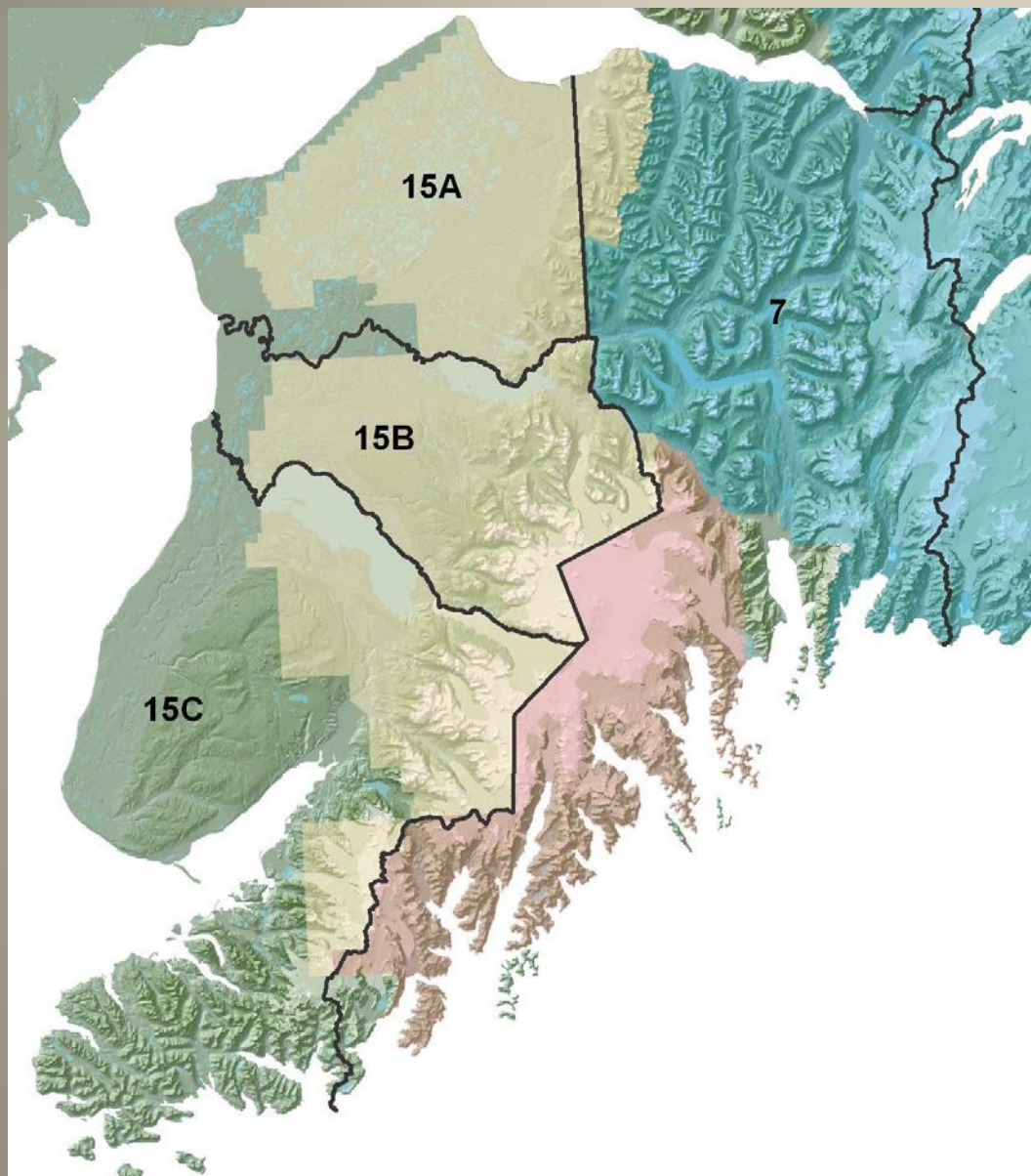
MRC Director: John Crouse

Research Biologist: Dan Thompson

Technician: Vacant

GIS Specialist: Liz Solomon

Kenai Peninsula GMUs 7 & 15



- 8,400 miles²
- Land ownership
 - ▶ 71% Federal
 - ▶ 29% State/Private/Borough/Native
- Human Population
 - ▶ >50,000

Furbearers

- Wolf louse infestation (1982)
- Lynx trapping/hunting closed
- Ave annual lynx harvest 307 (2008-2013, high: 465)
- five trapping/furbearer proposals

Furbearer average annual harvest (2009/10 – 2013/14)

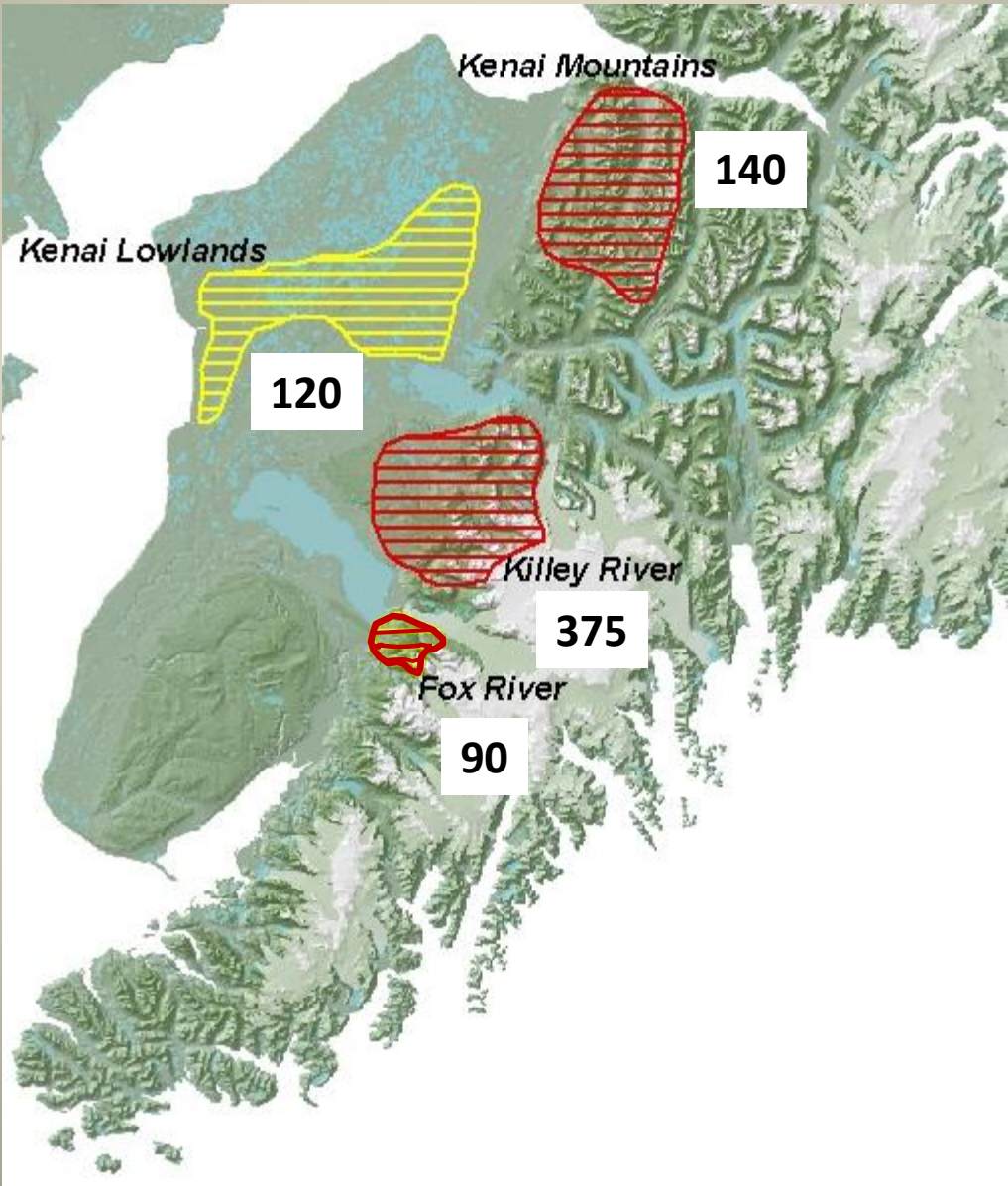
- Marten: 132
- Beaver: 96
- Wolverine: 14
- Otter: 47
- Wolf: 40

Caribou

- 4 small herds
- All were reintroduced
- No caribou proposals



Kenai Peninsula Caribou Herds

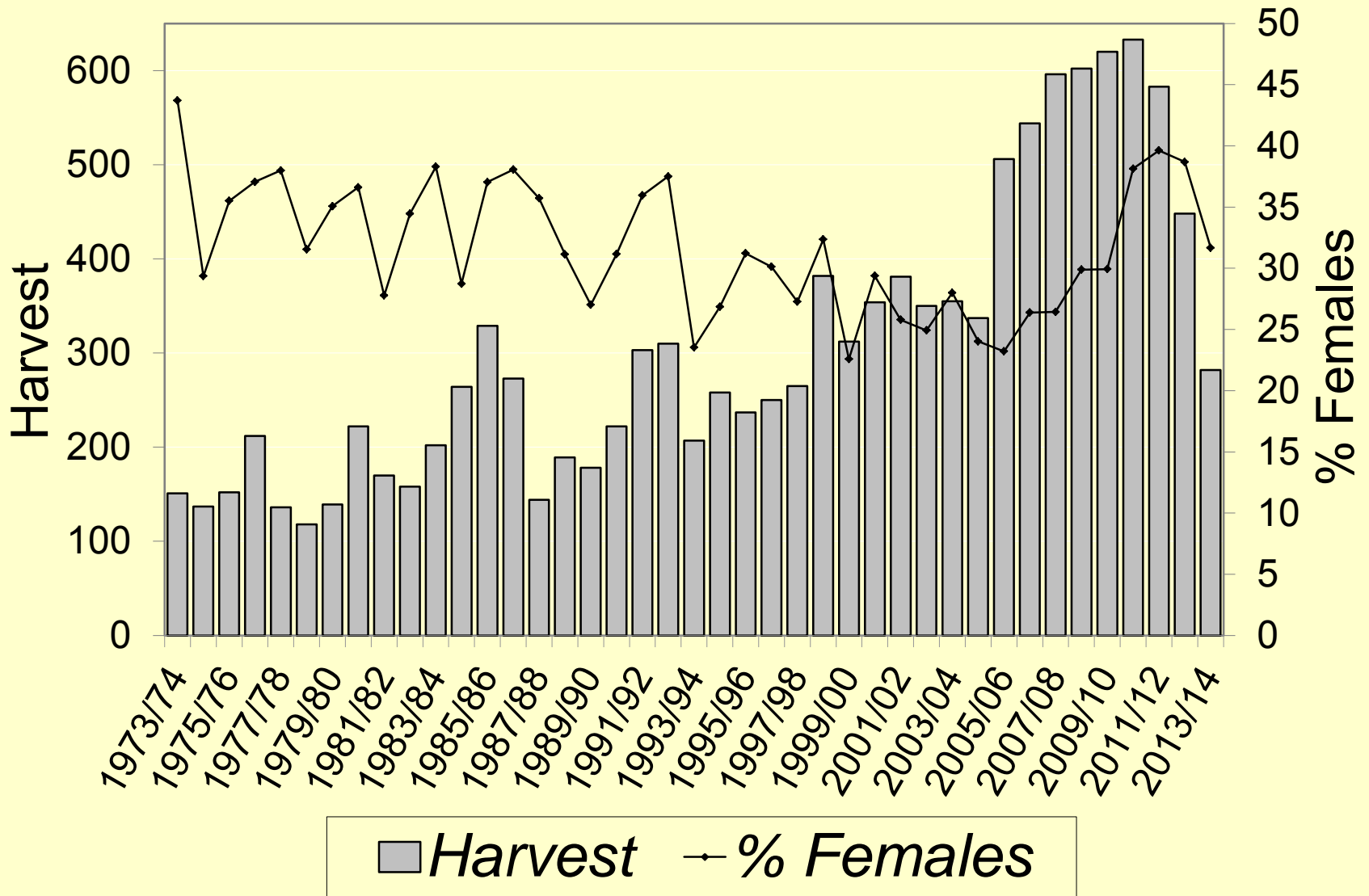


Black Bears

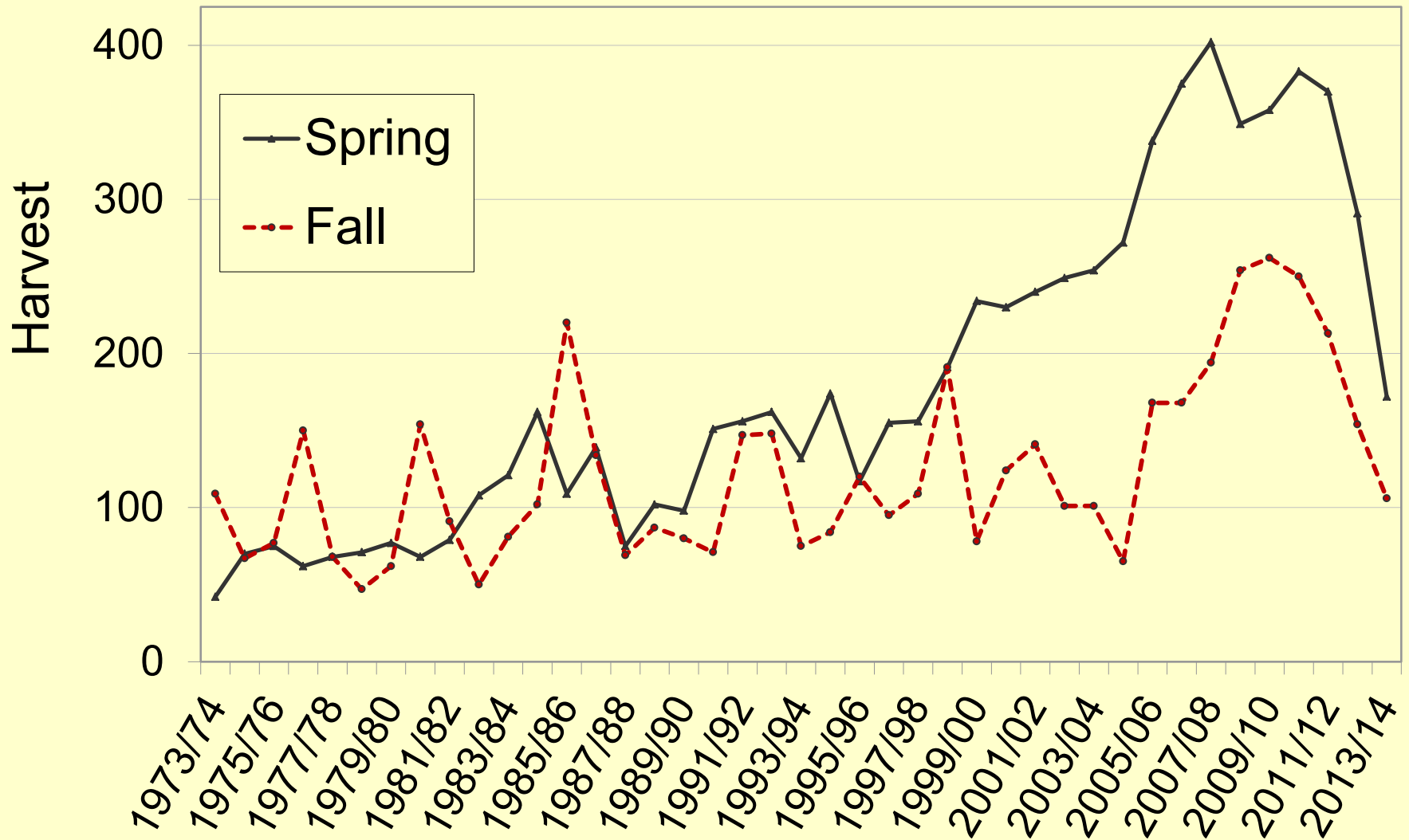


- Population size: >3000
- Harvest peaked in 2010 (633) and steadily declined since
- Genetic study s. Kachemak Bay
- No black bear proposals

Black Bear Harvest and % Females in GMUs 7 & 15 (1973/74 - 2013/14)



Black Bear Harvest in GMUs 7&15 1973/74 - 2013



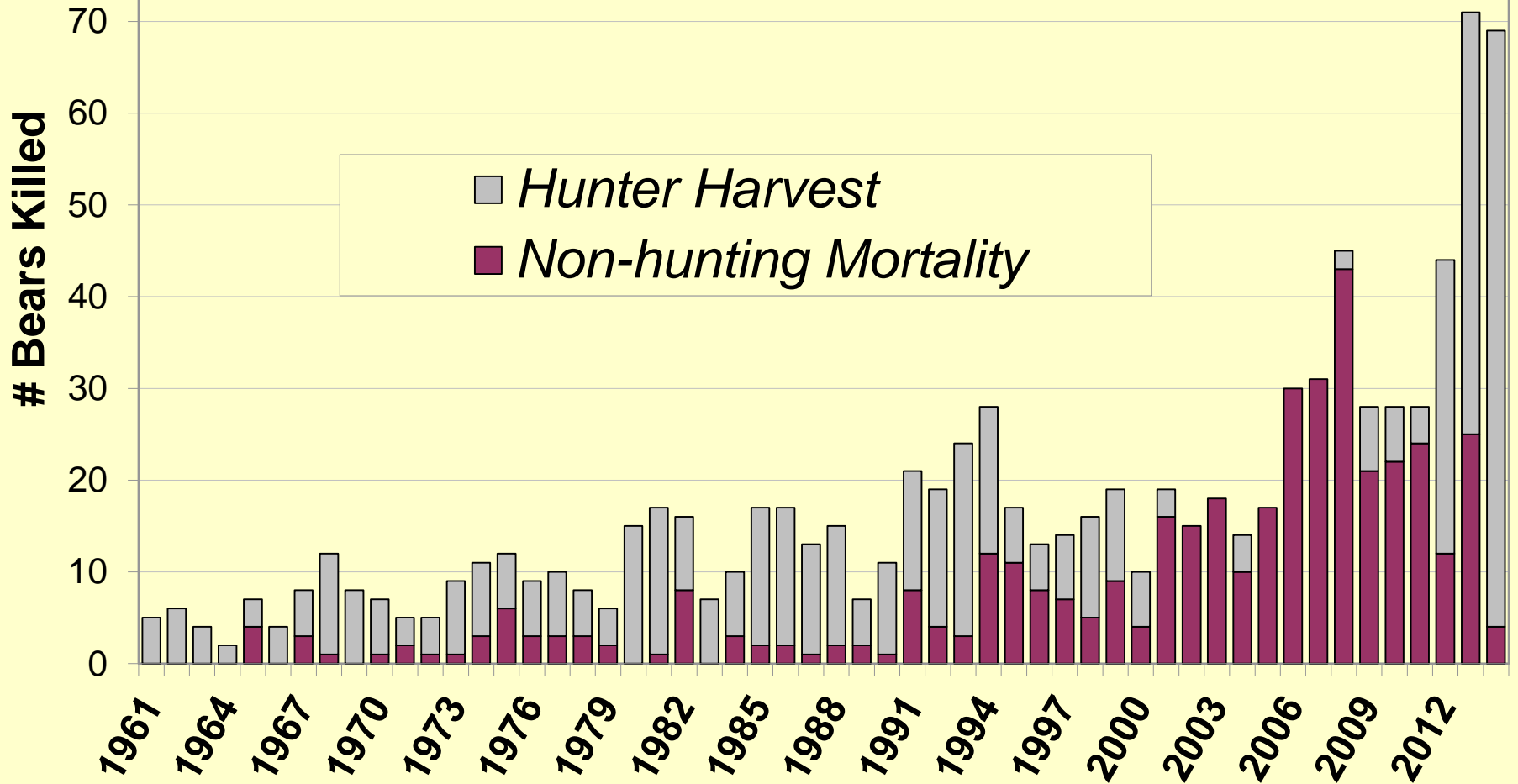
Brown Bears

- Liberalized seasons/bag 2012-2014
- Since liberalizing the hunt we believe the population has decreased
- Bear human conflicts have also decreased
- 5 brown bear proposals

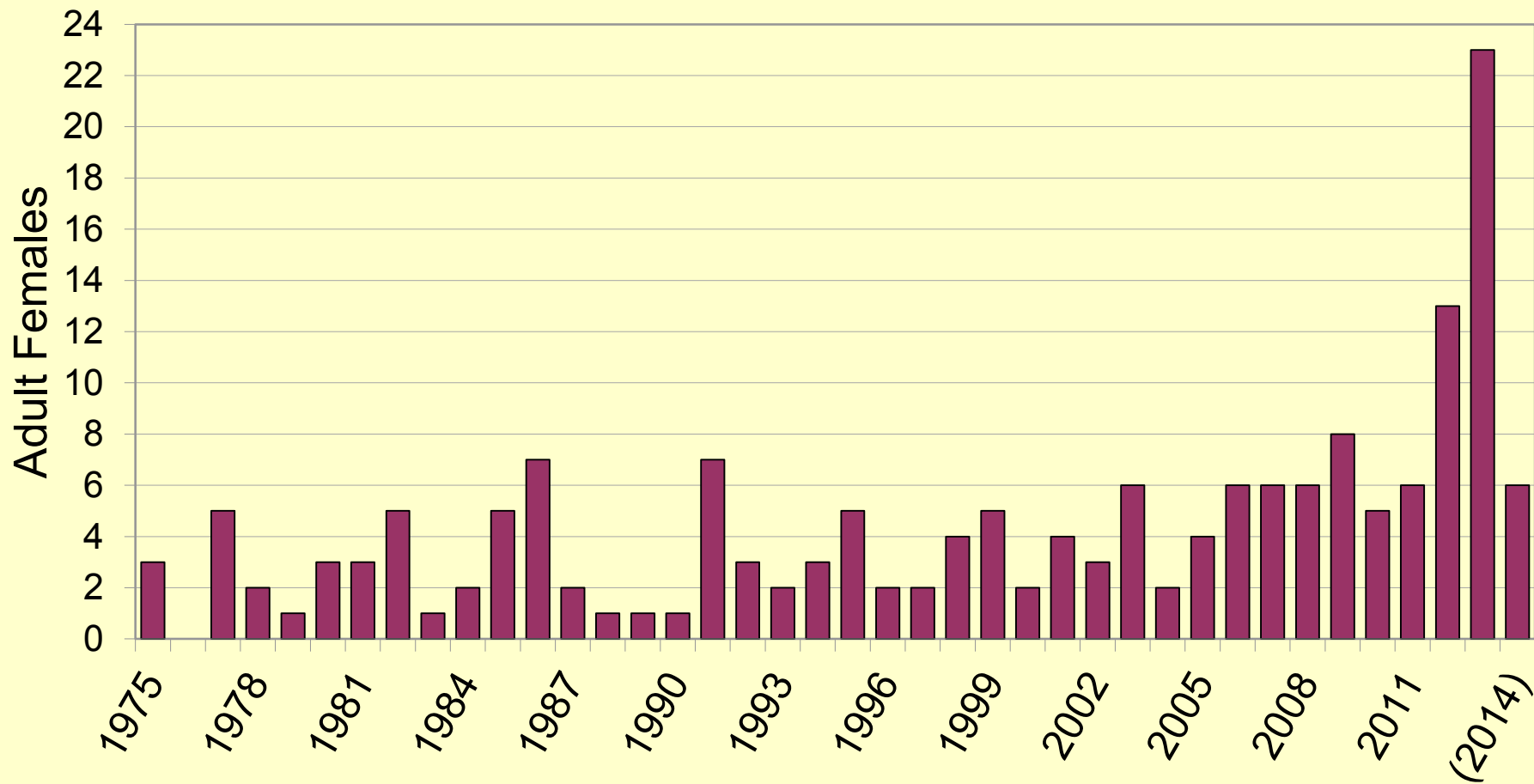


Human-caused brown bear mortalities in GMUs 7 & 15, 1961-2014

.....General Season..... Reg. Season Draw R D



Adult Female Brown Bear Mortality (≥ 5 years old) in GMUs 7 & 15, 1975-2014



Wildlife Conservation Community Program

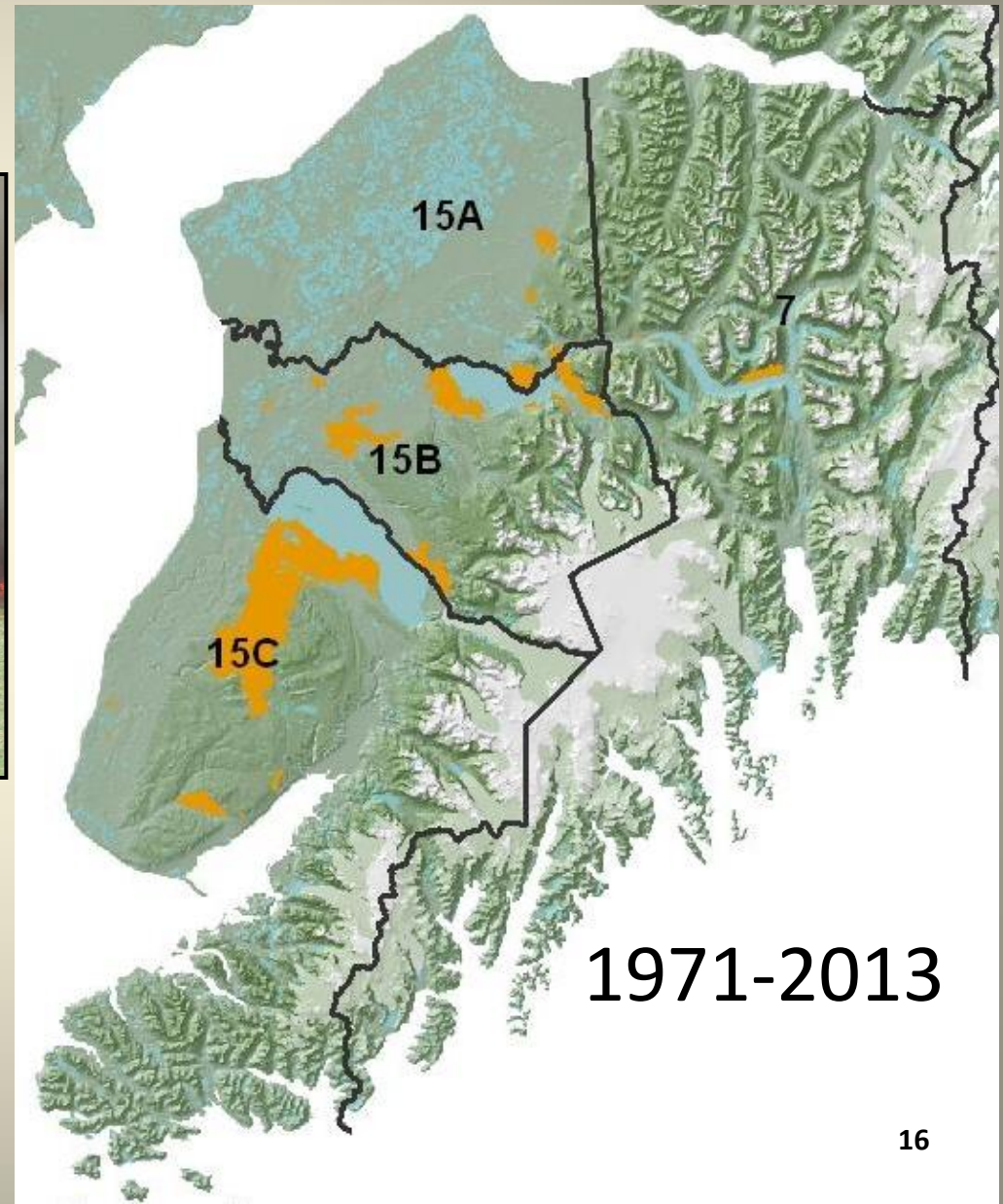


Moose

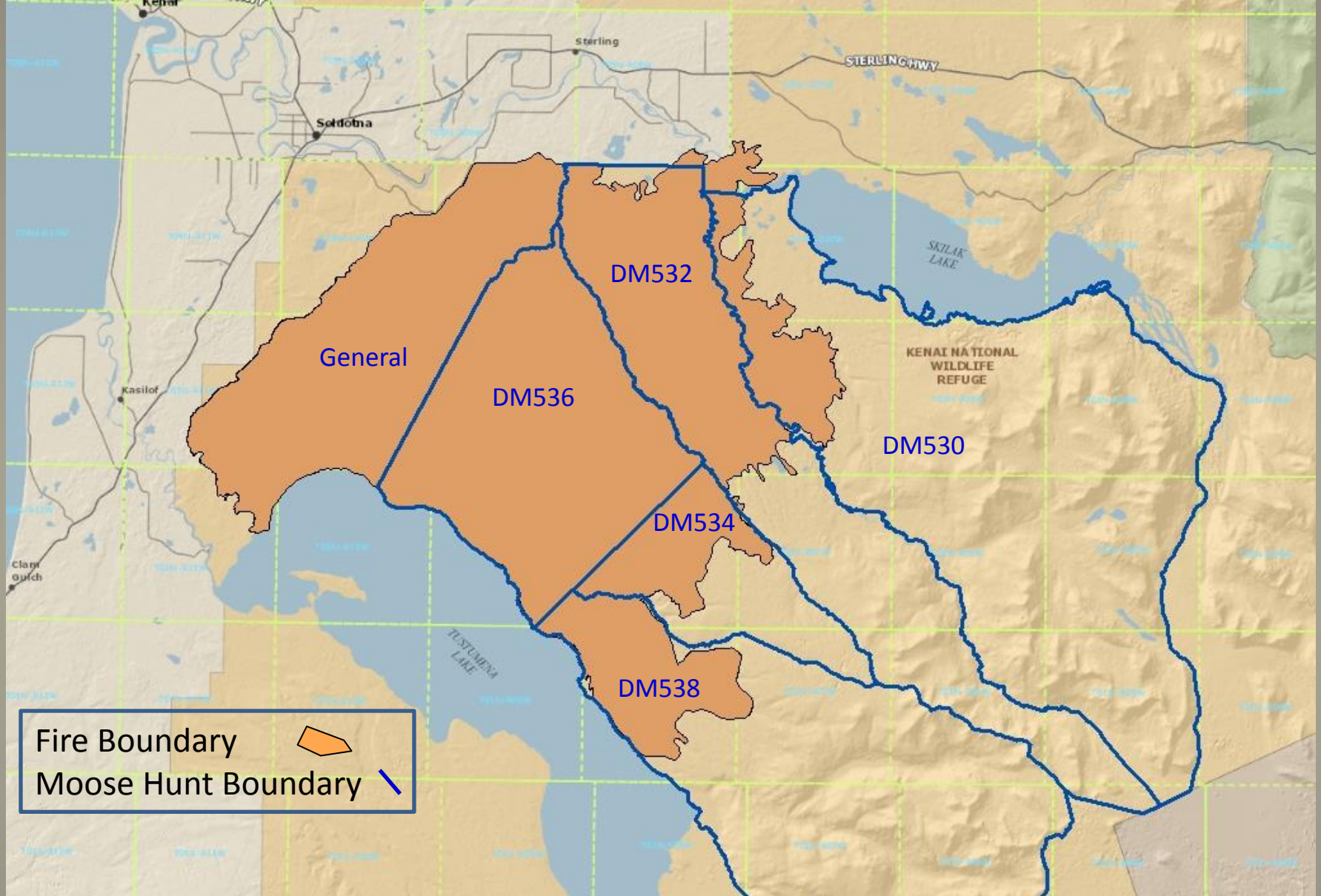
- Spike-Fork 50" antler restriction 1987-2010
- 4 brow tines or ≥ 50 " antler restriction 2011-2012
- Spike, 50/4 antler restriction 2013-2014
- Population Size Trends
 - ▶ 15A Declining
 - ▶ 15B ?????
 - ▶ 15C Stable
 - ▶ 7 Declining
- 13 moose proposals



Kenai Peninsula Fire History



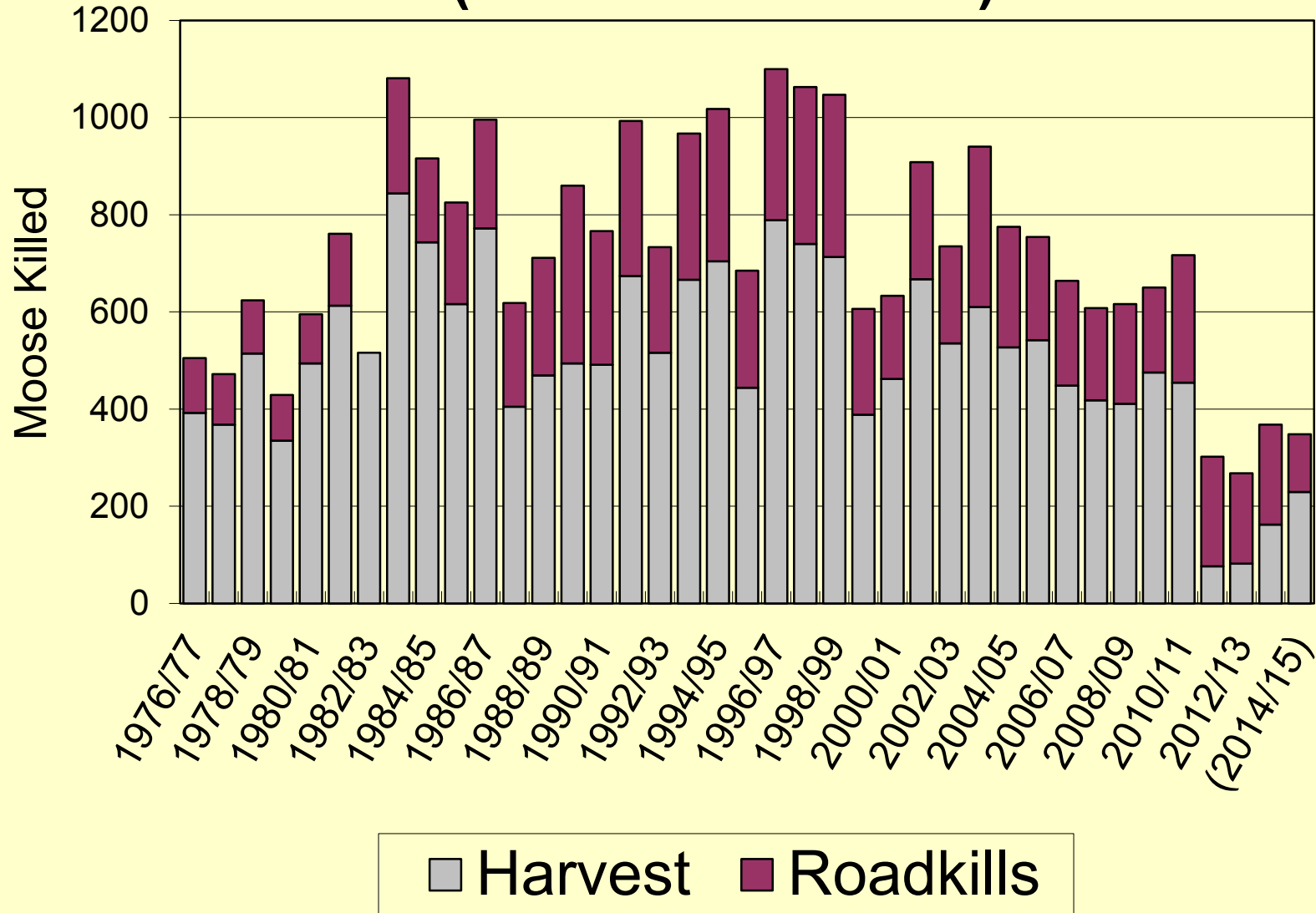
1971-2013



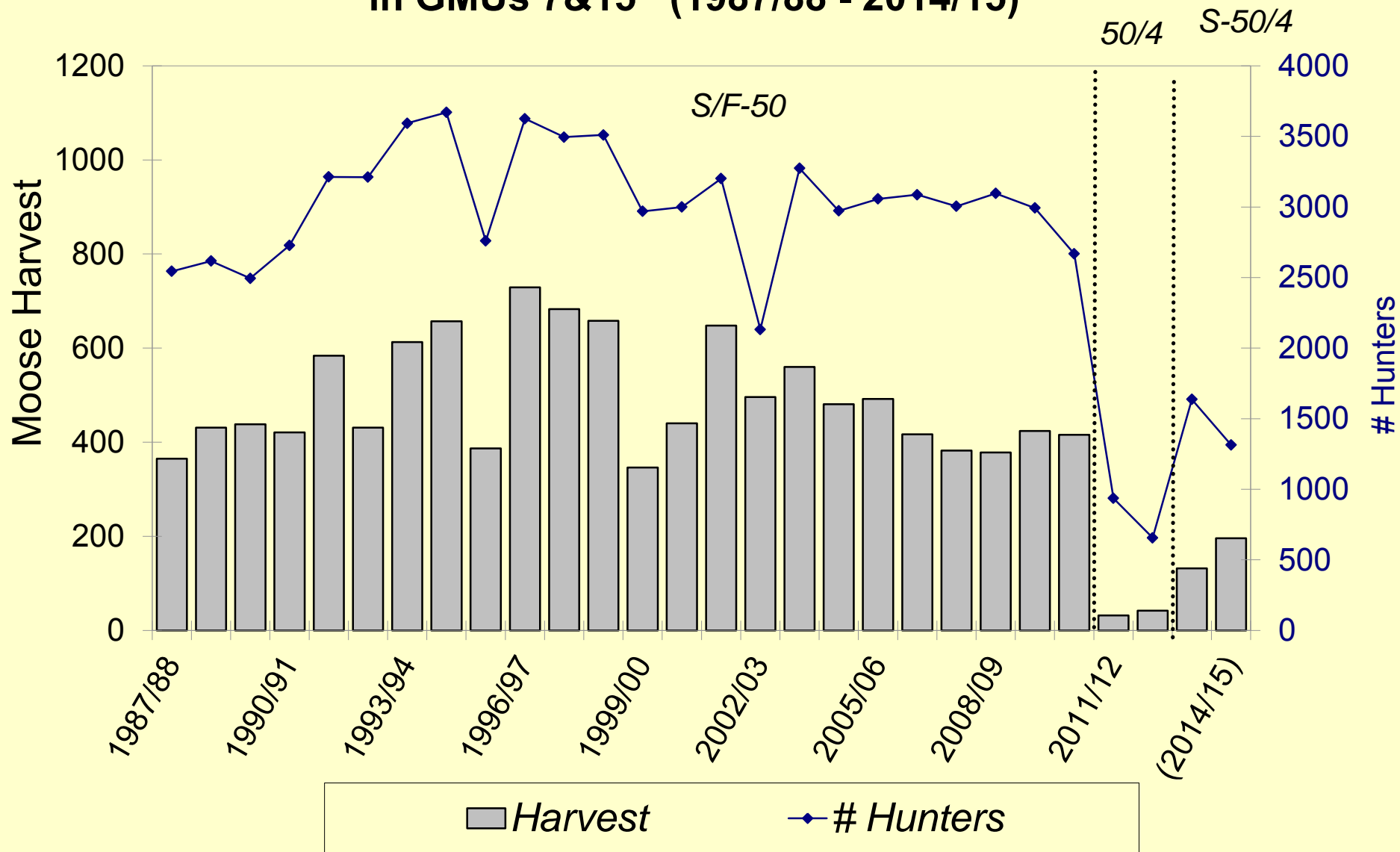
Funny River Fire Boundary and Corresponding Moose Hunts in GMU 15B



Total Reported Moose Mortality in GMUs 7 & 15 (1976/77 - 2014/15)



General Season Moose Harvest and Hunter Numbers in GMUs 7&15 (1987/88 - 2014/15)



Unit 7 And 15 Moose Summary

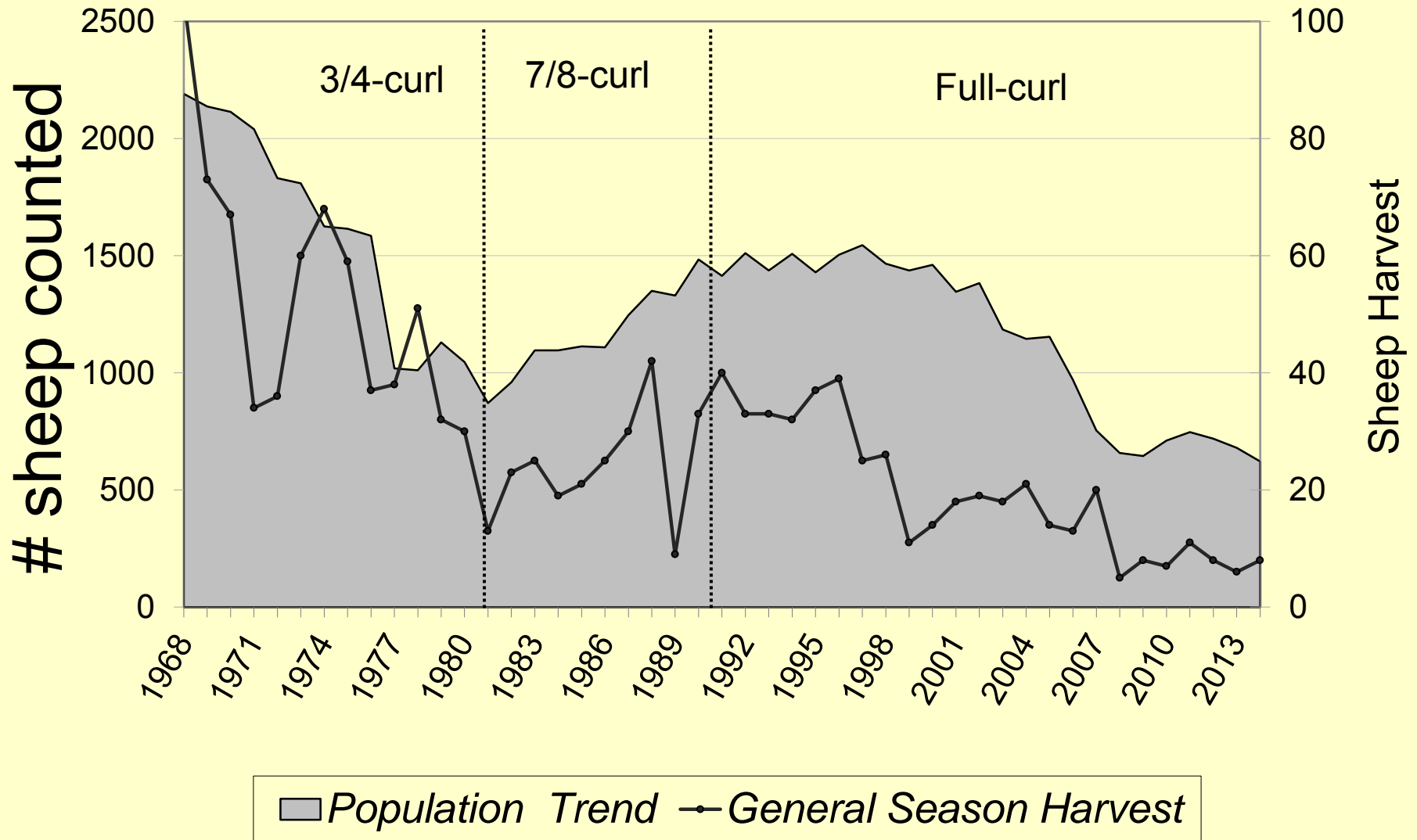
- Currently habitat limited, Units 7, 15A, 15B?
- Moose population status depends on fire history
- Harvest strategy should include harvest of all sex and age classes where possible
- We have a chance to increase hunter opportunity based on most recent census and survey information in Unit 15C

Sheep



- Continued Population decline from late 1990s
- 700-800 sheep?
- One Kenai specific sheep proposal

Sheep population size trend and harvest in GMUs 7&15 1968 - 2014

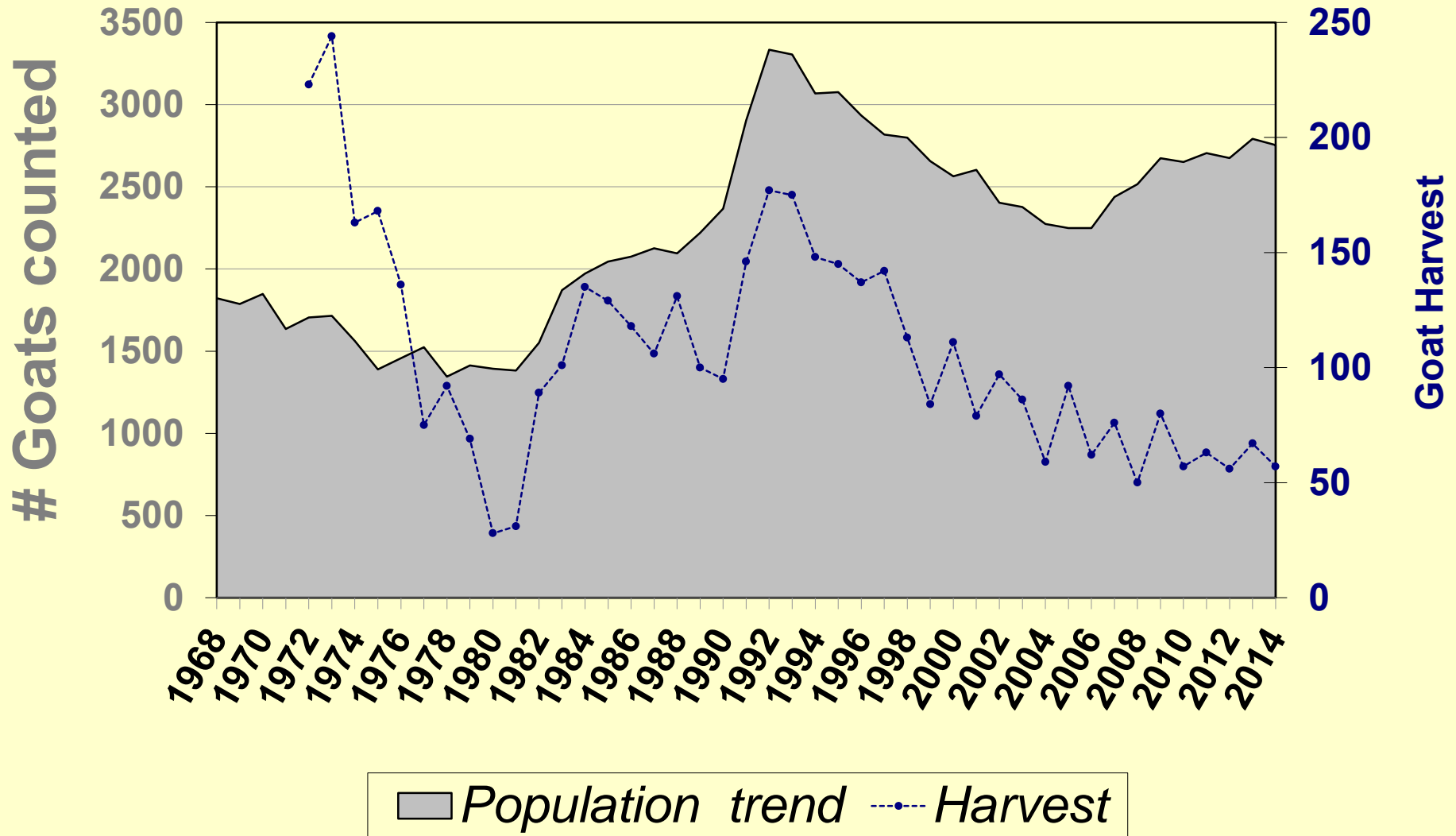


Mountain Goats

- Population decline from early 1990s
- Slowly increasing since 2006
- 3000-4000 goats
- No goat proposals



Goat population size trend and harvest in GMUs 7&15 1968 - 2014



Small Game

- Conducted ptarmigan surveys in 2013 (15C) and 2014 (7, 15A, and 15C)
- No population data for spruce grouse
- Hare population crashed 2011/12





Questions?