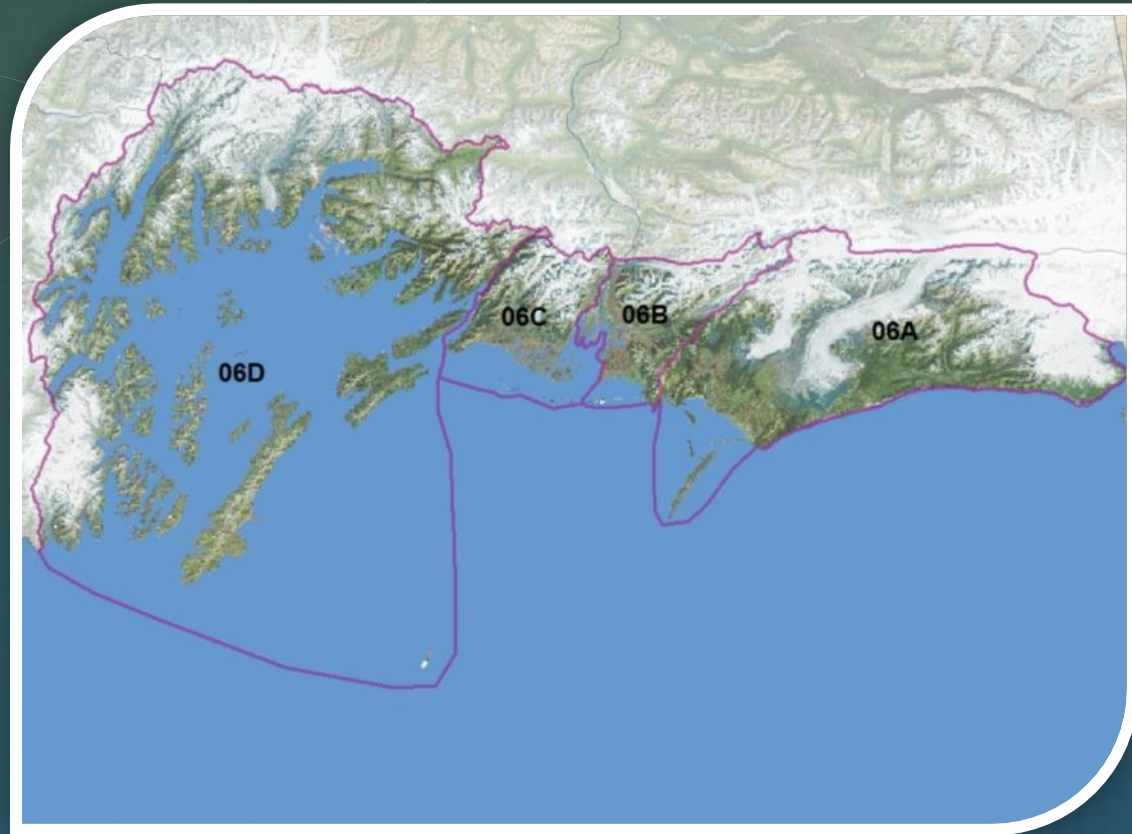


Unit 6

Survey and Inventory Activities



Charlotte Westing
Area Biologist

Samantha Stevenson-Renner
Program Technician

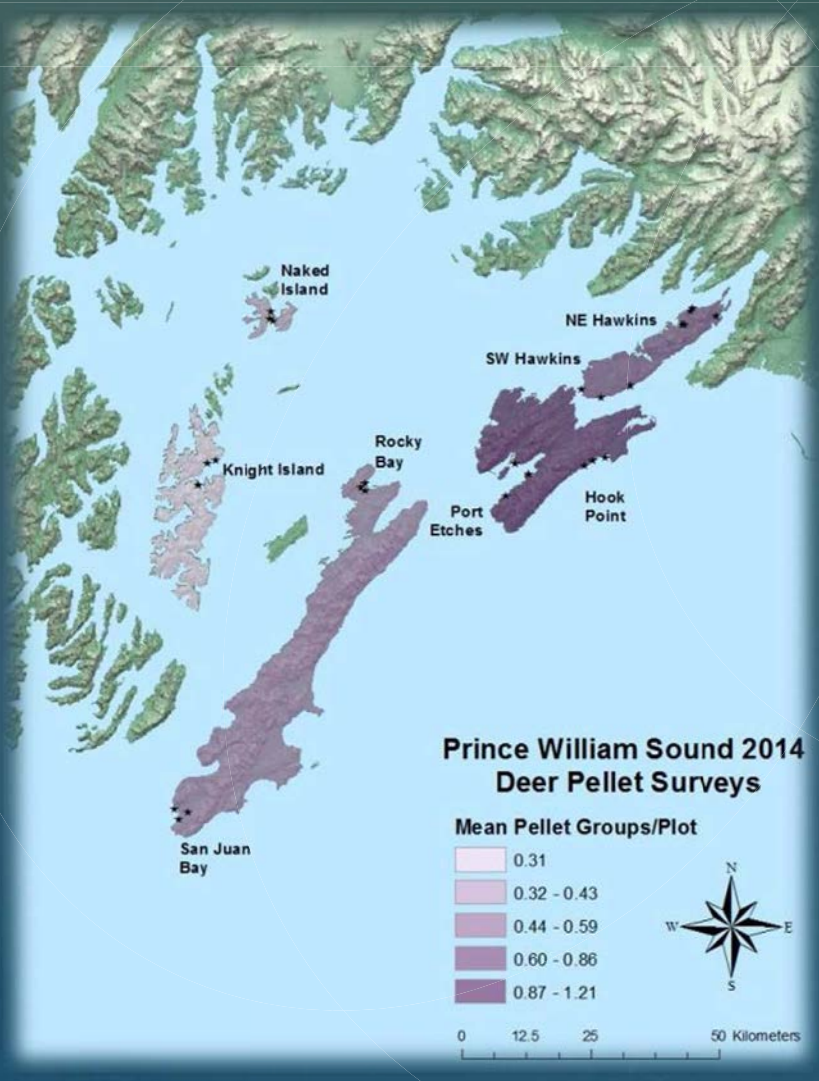
People

- ⌘ About 6800 people live year-around in one of the 5 communities of Prince William Sound
 - ⌘ Whittier
 - ⌘ Valdez (60% of the Unit 6 population)
 - ⌘ Tatitlek
 - ⌘ Cordova (34% of the Unit 6 population)
 - ⌘ Chenega Bay
- ⌘ In the summer, the population increases dramatically
- ⌘ Prince William Sound receives many users from all over the state and the world
 - ⌘ Whittier is within an hour of the state's biggest population center
 - ⌘ More than \$5.5 million spent on wildlife viewing alone
 - ⌘ Hunting brings many millions of dollars to the economy as hunters pursue deer, goats, and black bear

Land Ownership

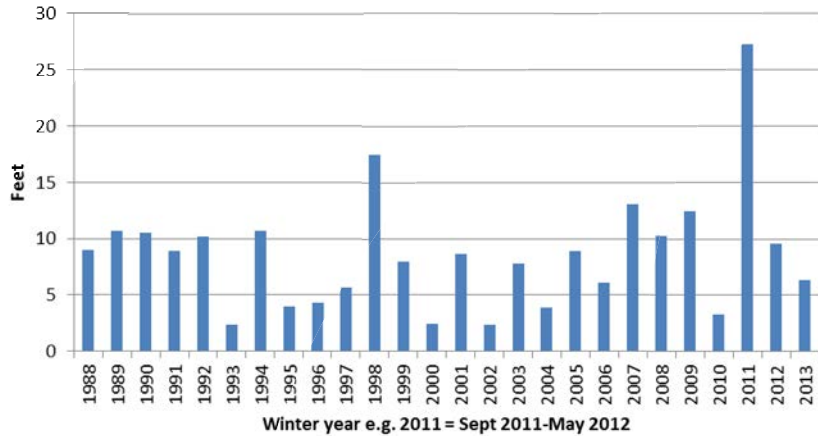
- ⌘ Chugach National Forest, BLM
- ⌘ Chugach Alaska Corporation
- ⌘ Chenega, Tatitlek and Eyak Villages
- ⌘ Unit 6A: Yakataga State Game Refuge, University and Mental Health Trust
- ⌘ 205,000 acres acquired from EVOS: habitat conservation in Prince William Sound

PWS Deer Update

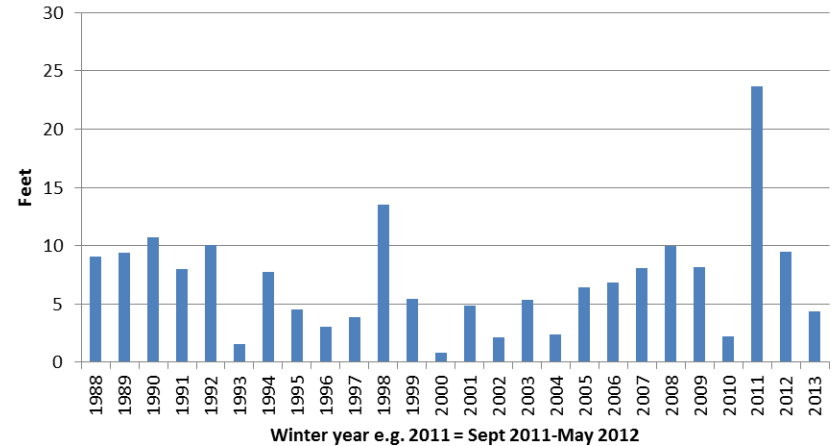


Winter 2011-2012 Snowpocalypse

Cordova Weather Station- Sum of Monthly Total Snow Fall



Cordova Weather Station- Sum of Maximum Monthly Snow Depth



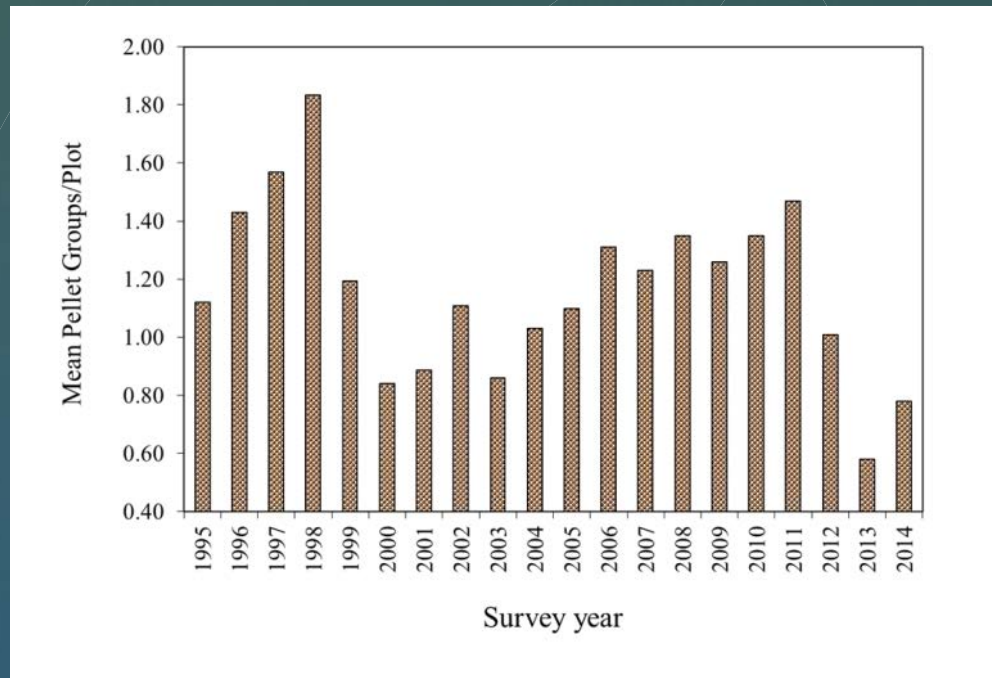
© Steve Moffitt 2011



© Steve Moffitt 2012

Deer Pellet Survey Results

- ⌘ Always 1 year lag effect in declines
- ⌘ 60% reduction in the population from 2011
- ⌘ Decline from 1998 shows a similar pattern
- ⌘ Mild winters in RY2012 and RY2013
- ⌘ 2014 shows some improvement (down only 47% from 2011) but is second lowest on record
- ⌘ Anecdotal reports indicate things are much better



Moose

Where- 6C West Copper River Delta

Population- about 600 moose.

Status- Highly productive. Population above objectives.

Hunt Opportunity- State drawing for 25% of bull quota, Federal drawing for 75% of bull quota and 100% of cow quota.



Moose

Where- 6B East Copper River drainages
(Martin River)

Population- about 230 moose.

Status- Less productive, slightly below objectives.

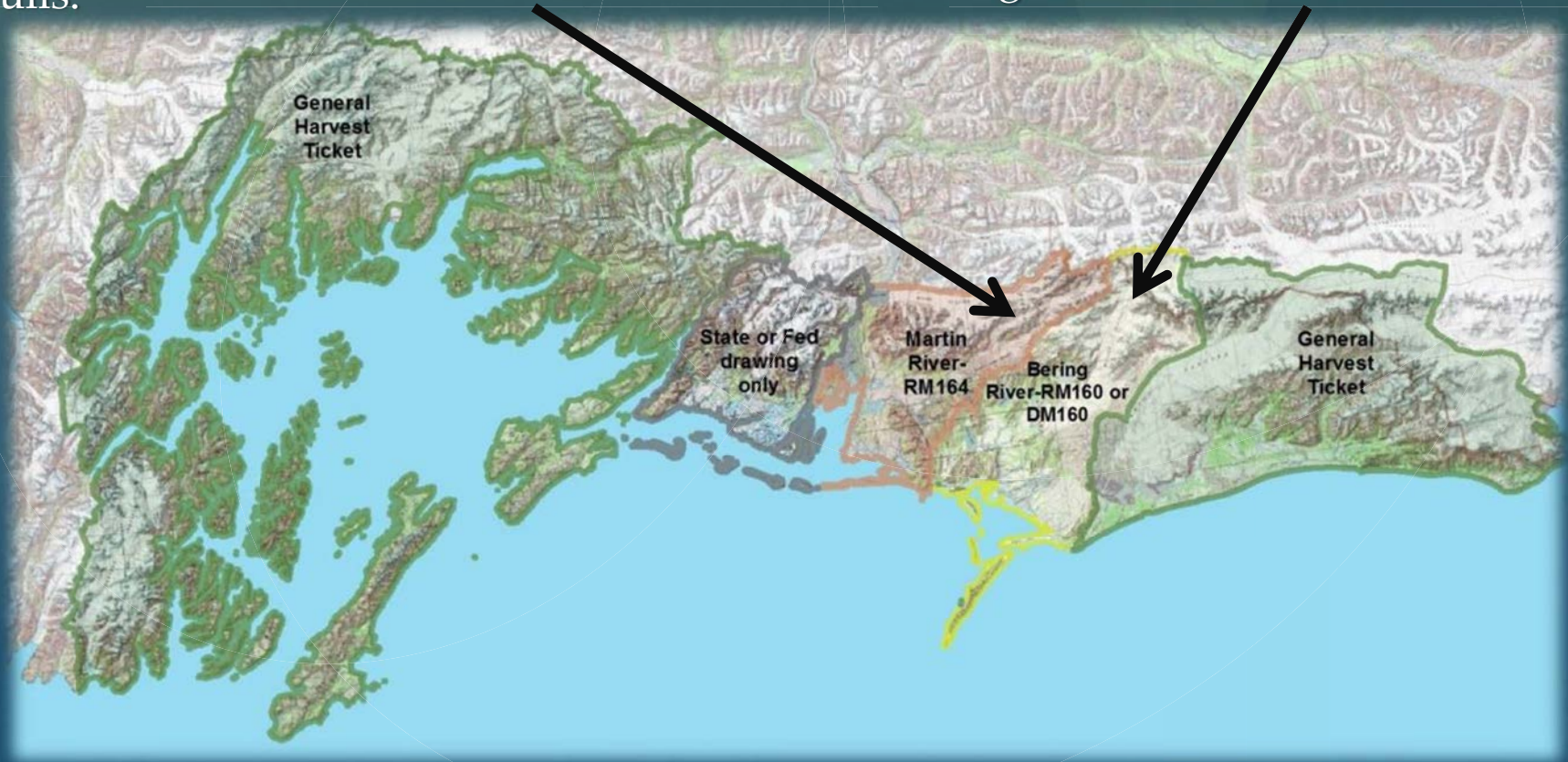
Hunt Opportunity- Registration hunt for 20 bulls.

Where- 6A West- (drainages between Cape Suckling and Palm Point)

Population- about 250 moose in 2009.

Status- Poor recruitment, slightly below objectives.

Hunt Opportunity- Registration and drawing. Combined MAH of 20 bulls.



Moose

Where- 6D Prince William Sound

Population- few moose

Status- little moose habitat

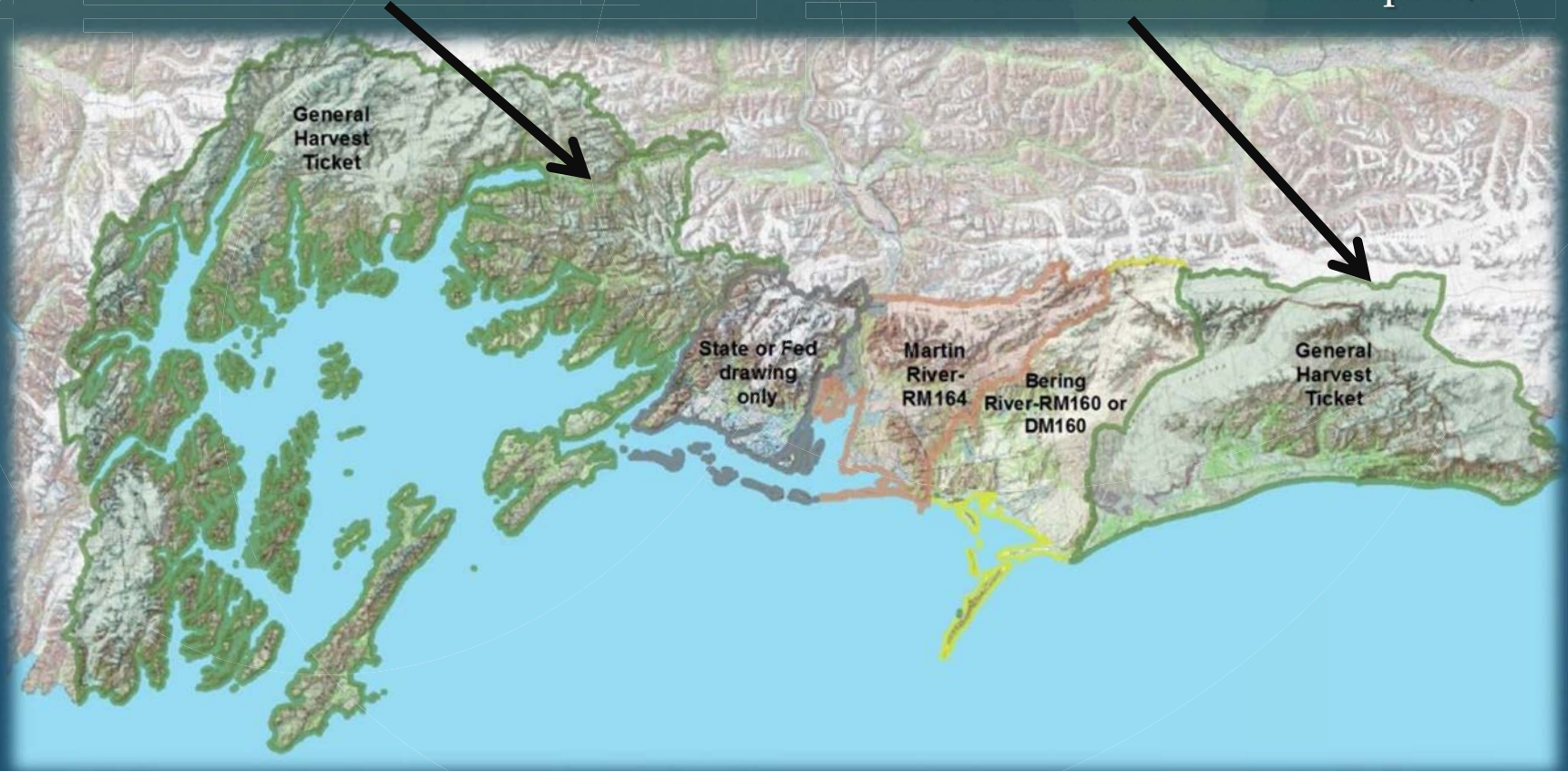
Hunt- General Season any bull
(less than 5 harvested a year.)

Where- 6A East (remainder)

Population- about 200 moose in 2008.

Status- Poor recruitment, below objectives

Hunt- General Season spike/fork or 50
inches (or three browtines) for residents.
Same for nonresidents but no spike/fork.



Moose Proposal

& Antlerless moose reauthorization in Unit 6C



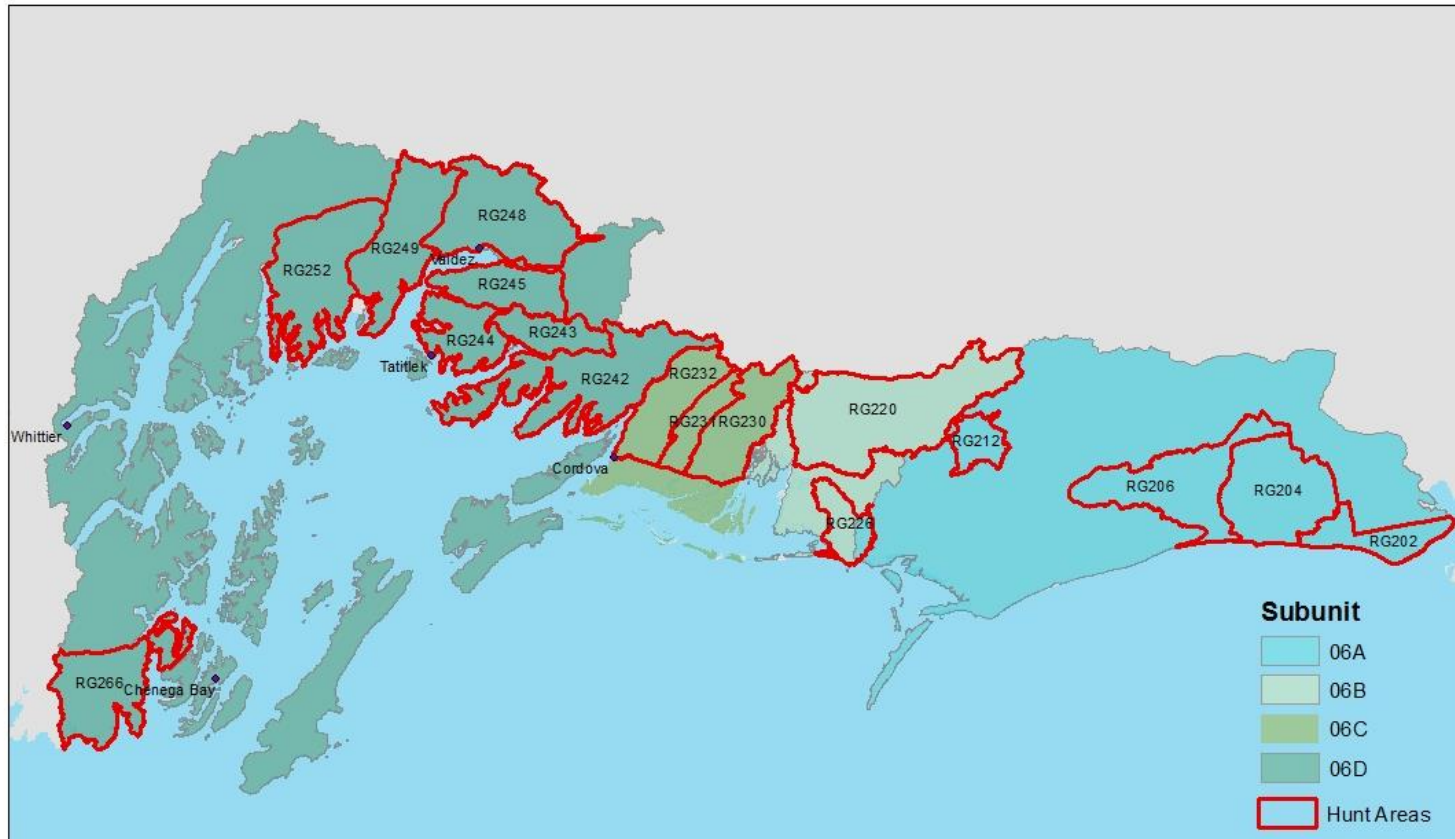
Goats



Game Management Unit 6
Mountain Goat Registration Permit Hunt Areas
Regulatory Year 2014-2015



Contact the Cordova ADFG office at (907) 424-3215 with questions.



Goats



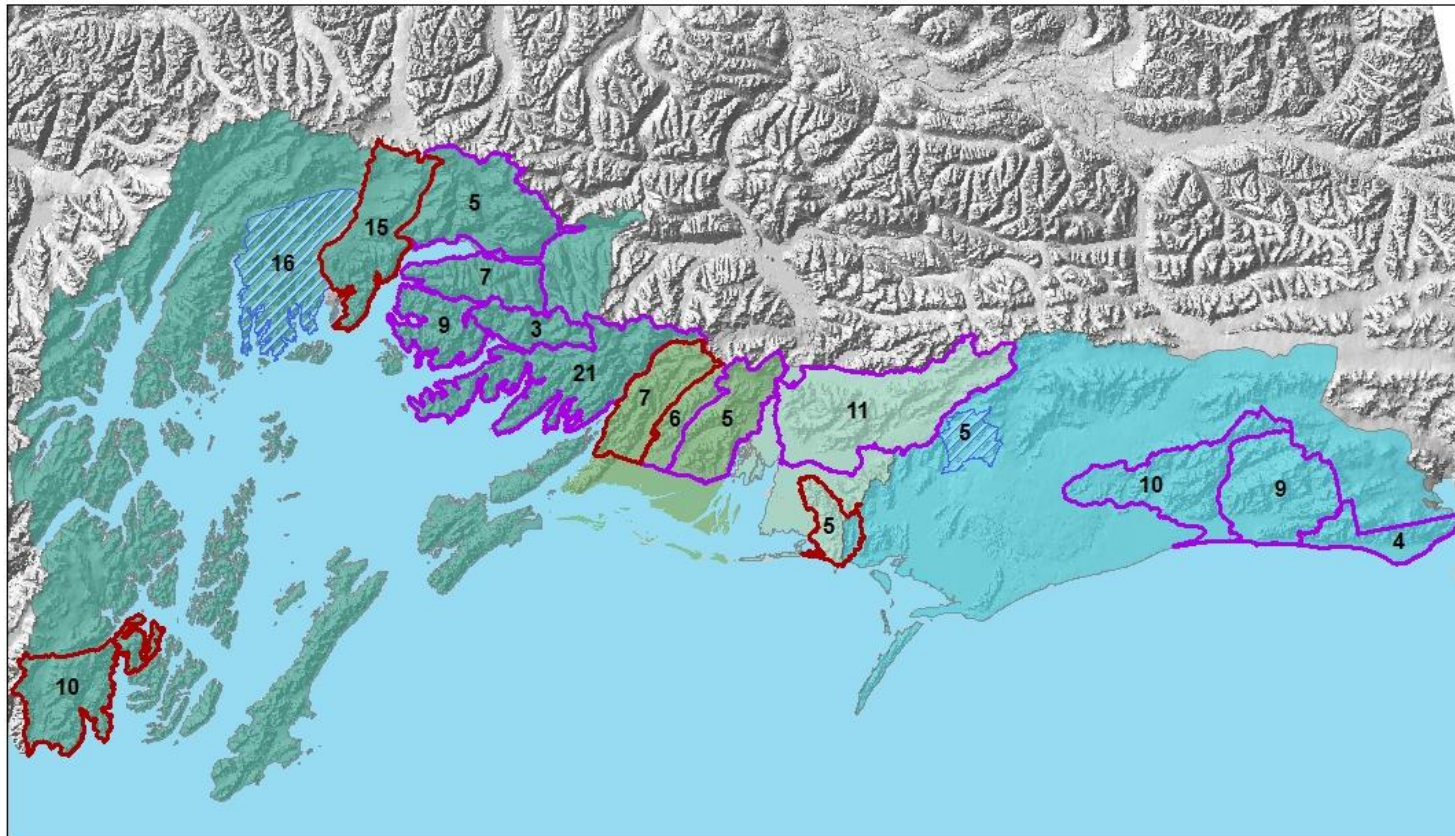
Game Management Unit 6 Regulatory Year 2014-2015
Mountain Goat Maximum Allowable Harvest
(Areas that are to be surveyed may change)



To Survey	
	No
	Updated
	Yes

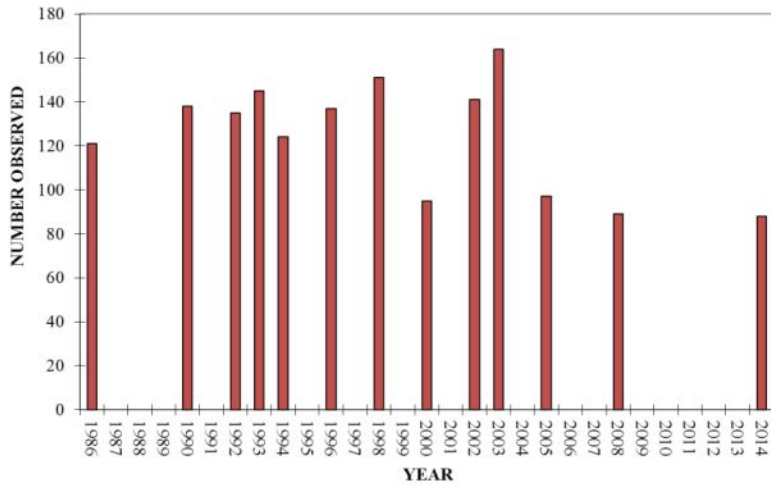


Contact the Cordova ADFG office at (907) 424-3215 with questions.



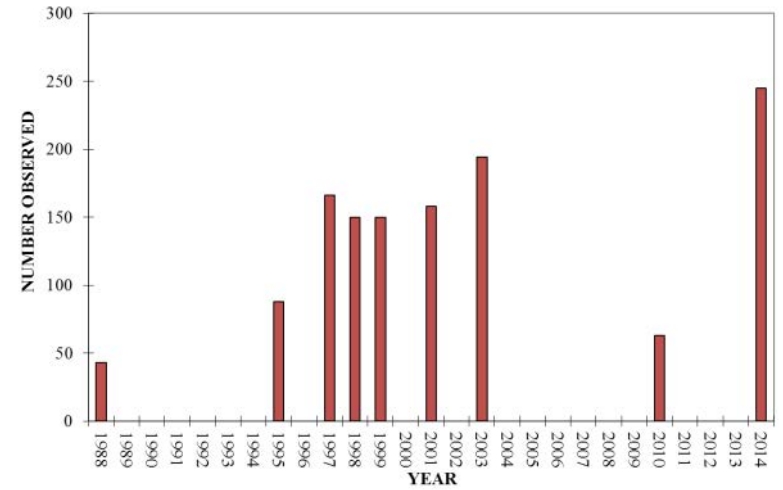
Ragged Mountains

**MOUNTAIN GOAT MINIMUM COUNT SURVEY
RG226: (6B-1)**



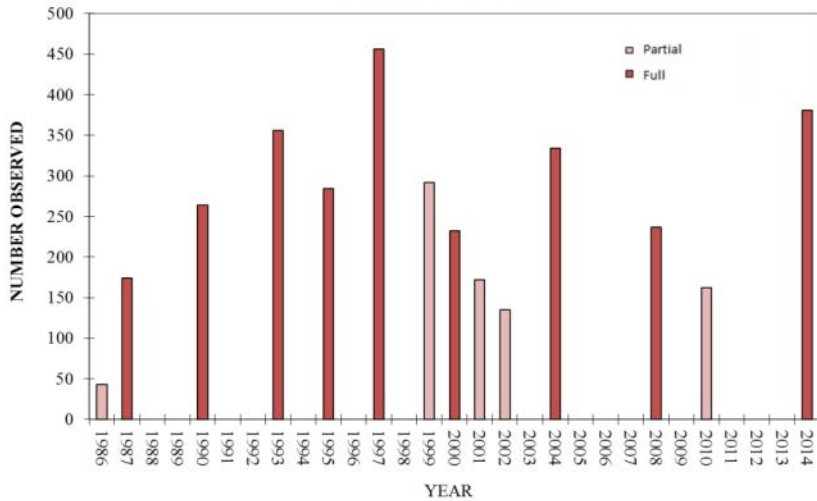
Scott Glacier to Rude River

**MOUNTAIN GOAT MINIMUM COUNT SURVEY
RG232 (6C-3A-B)**



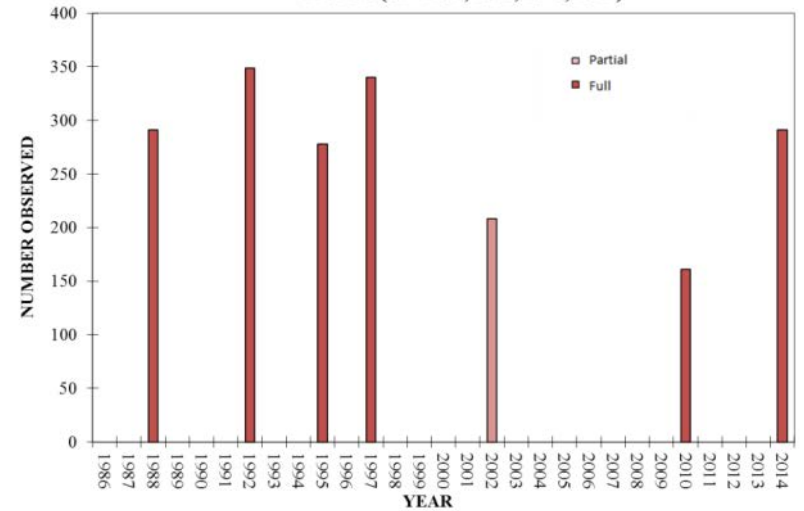
Shoup Glacier to Columbia Glacier

**MOUNTAIN GOAT MINIMUM COUNT SURVEY
RG249 (6D-10A, 10B)**



Southwest Prince William Sound

**MOUNTAIN GOAT MINIMUM COUNT SURVEY
RG266 (6D-17A, 17B, 17C, 17D)**



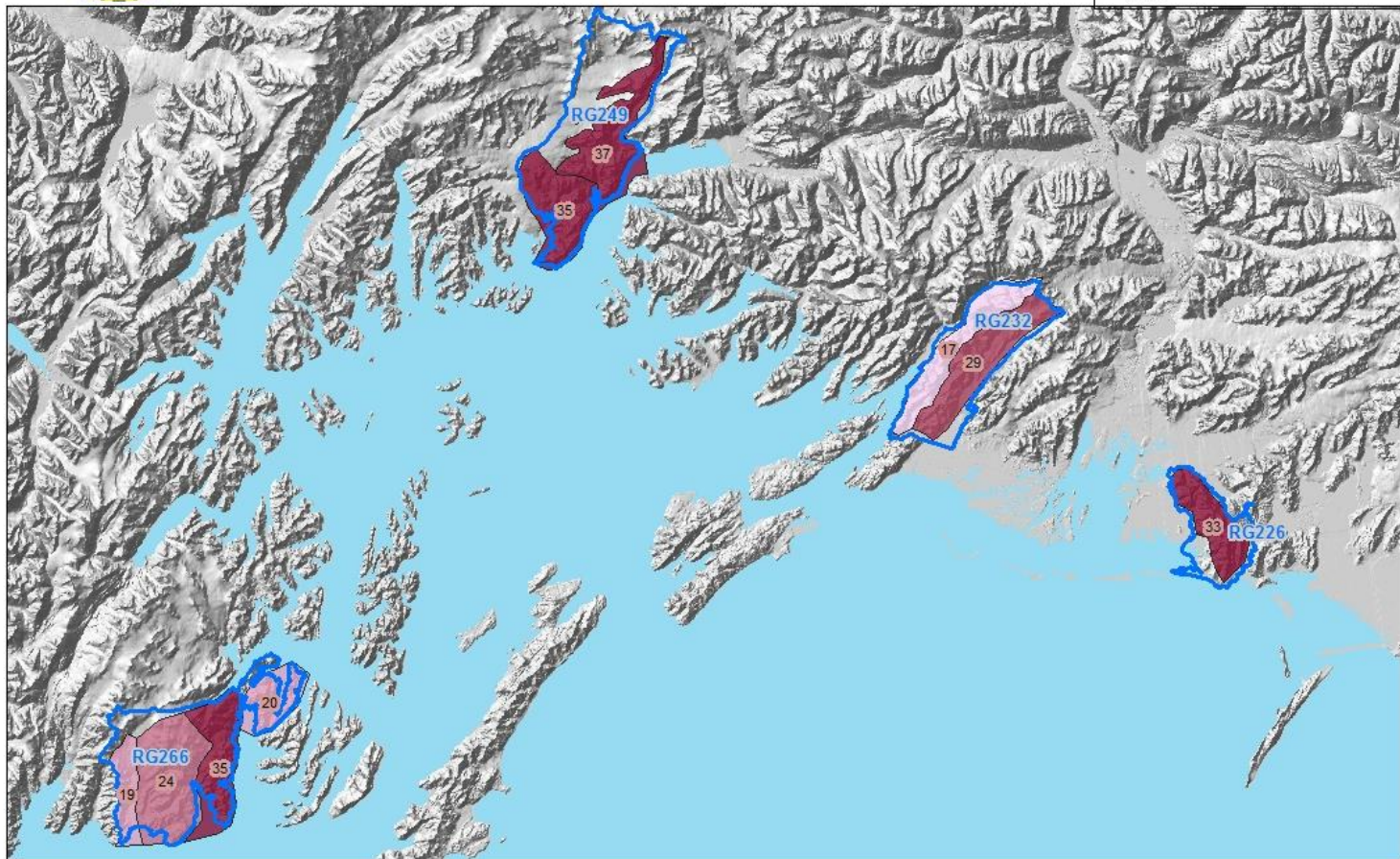
Goats



Game Management Unit 6 2014 Mountain Goat Survey Results Kids/100 Adults by Survey Unit



Contact the Cordova ADFG office at (907) 424-3215 with questions.



Goat Proposal

- ⌘ If a nanny is taken in Unit 6, another goat may not be taken in the unit for 5 years



Milo Burcham

Brown Bears

⌘ Regulations:

- ⌘ Units 6A, 6B and 6C- one bear every regulatory year
- ⌘ Unit 6D - one bear every 4 years
 - ⌘ Montague Island-Registration permit

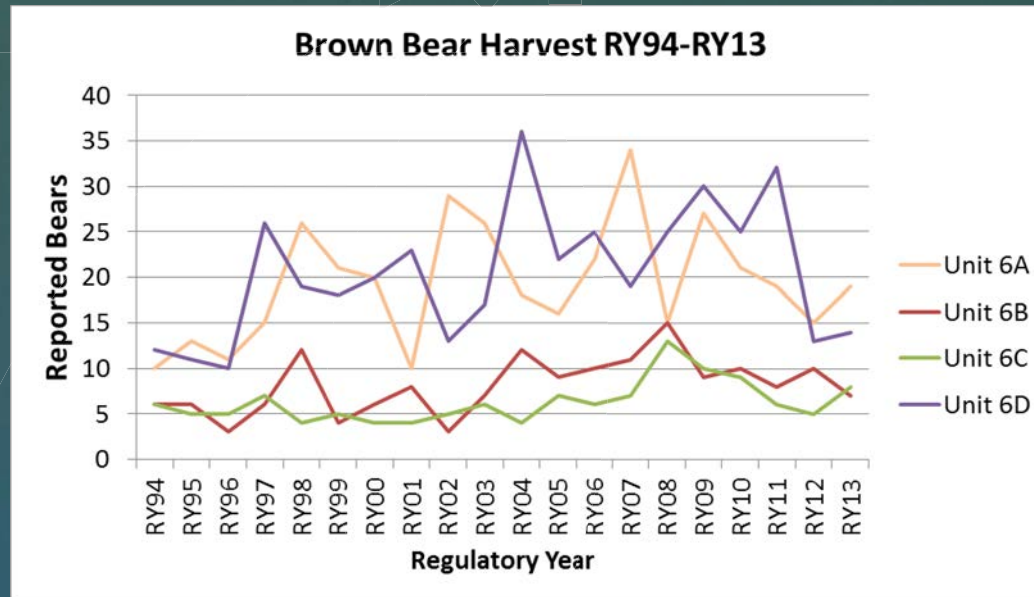
⌘ Status:

- ⌘ Track and den surveys conducted on Montague and Hinchinbrook as an index of abundance
- ⌘ Populations appear stable



Milo Burcham

Brown Bears



- ⌘ Harvest: varies wildly from year to year
 - ⌘ Unit 6A – 10 year average of 20 bears
 - ⌘ Unit 6B – 10 year average of 10 bears
 - ⌘ Unit 6C- 10 year average of 8 bears
 - ⌘ Unit 6D- 10 year average of 24 bears
- ⌘ There are no brown bear proposals

Other species of interest

- ⌘ Wolves
- ⌘ Coyotes
- ⌘ Marten
- ⌘ Porcupines
- ⌘ Snowshoe Hares
- ⌘ Lynx
- ⌘ Ptarmigan and grouse
- ⌘ Beaver
- ⌘ Muskrats
- ⌘ Wolverine
- ⌘ Marmots
- ⌘ Weasels
- ⌘ River Otters- PWS Research Project
- ⌘ Dusky Canada Geese- populations show signs of improvement
- ⌘ Mink- predator control program in place on Naked Island to protect Pigeon Guillemot rookeries



Unit 6D-Black Bears

- ⌘ Without population estimates, what are the **red flags**?
 - ⌘ Over a 10 year period (RY98-RY07) harvests tripled
 - ⌘ Since RY07, harvests have declined
 - ⌘ From RY08-RY11, harvest declined an average of 5% annually
 - ⌘ From RY11-RY12, harvest decreased 24%
 - ⌘ From RY12-RY13, harvest decreased 48%
 - ⌘ Harvest of females has increased (over 40% for 3 years)
 - ⌘ Success rates have declined
 - ⌘ Anecdotal reports of declining numbers

Unit 6D-Black Bears

Unit 6D (Prince William Sound) Black Bear Harvest Data



Unit 6D-Black Bears

Questions we hope to answer:

- ⌘ Is the current harvest of black bears in PWS sustainable?
- ⌘ What is an acceptable level of harvest?
- ⌘ Can modeling answer questions regarding population size?



Photo by Steve Moffitt

Unit 6D-Black Bears

Direction of future research



Photo by Steve Moffitt

↳ DNA based research

- ⌘ Sample live bears by hair snares and/or biopsy darts
- ⌘ Sample dead bears at the point of sealing.
- ⌘ Can be used to:
 - ⌘ Calculate exploitation rates
 - ⌘ Understand dispersal and relatedness between bears
 - ⌘ Identify potential “sources” and “sinks” within the population

↳ Use age data from archived teeth to conduct age class population reconstruction

Unit 6D-Black Bears

What can be done while we wait for research and results?

Short term:

Emergency order shortening the Spring 2015 by two weeks

⌘ Season will close May 27
(11:59pm) in Unit 6D



Photo by Milo Burcham

Unit 6D-Black Bears

What can be done while we wait for research and results?

Long term:

The board considered three emergency proposals seeking to change black bear management in Unit 6D (Prince William Sound)

- ☞ Registration hunt in Unit 6D starting RY15
 - ☞ One permit for all of Unit 6D available online and at ADFG offices
 - ☞ The RY15 hunt will have a MAH of 200 bears
 - ☞ Reporting within 5 days of kill (30 day sealing requirement)
 - ☞ Fall harvest monitoring
 - ☞ Monitoring changes in hunter distribution



Milo Burcham

Questions?