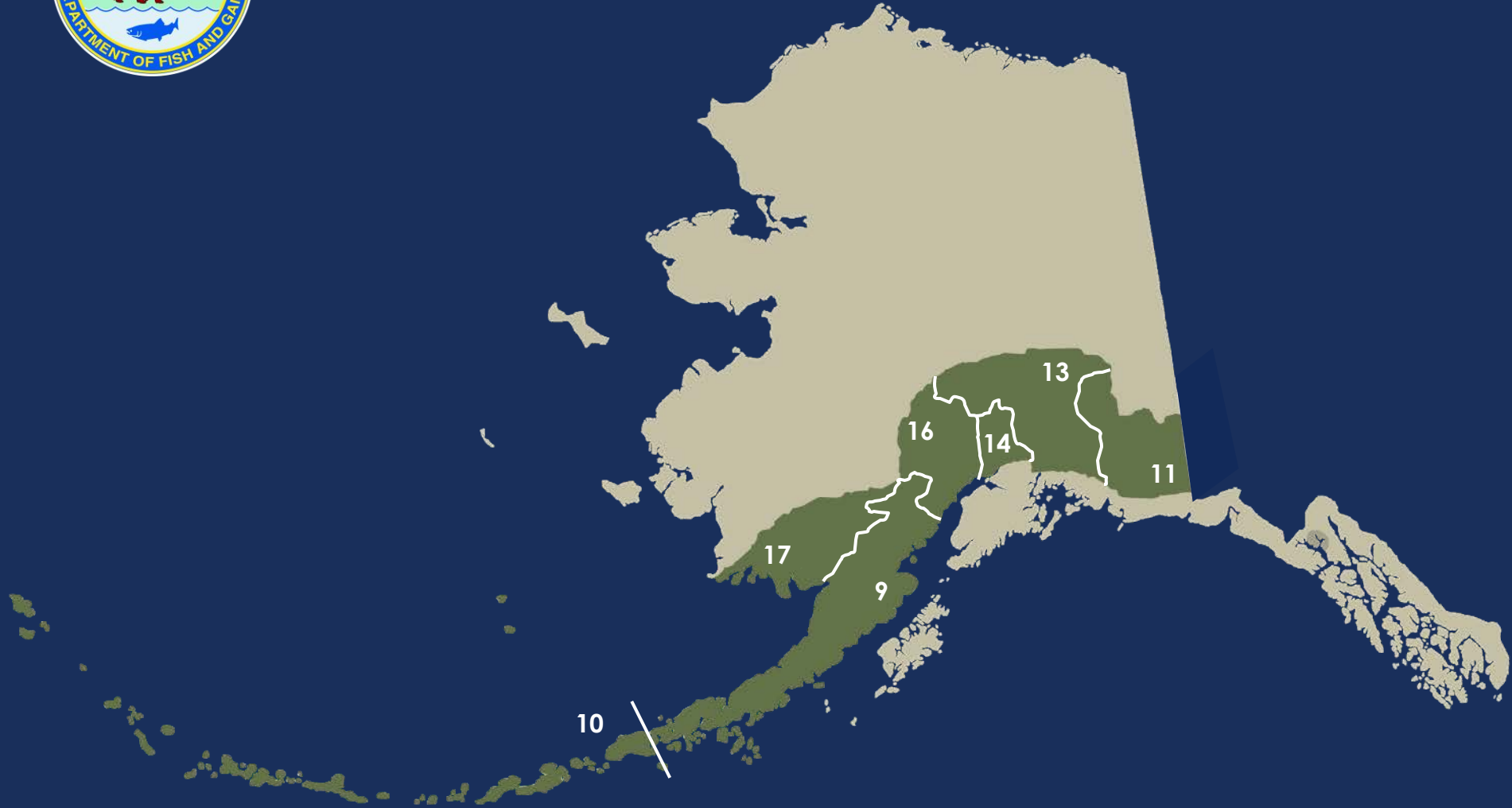




Region IV



Central and Southwest Alaska

Proposal 122 – Brown bear

*Reauthorize brown bear tag fees exemptions
in Region IV*

Support

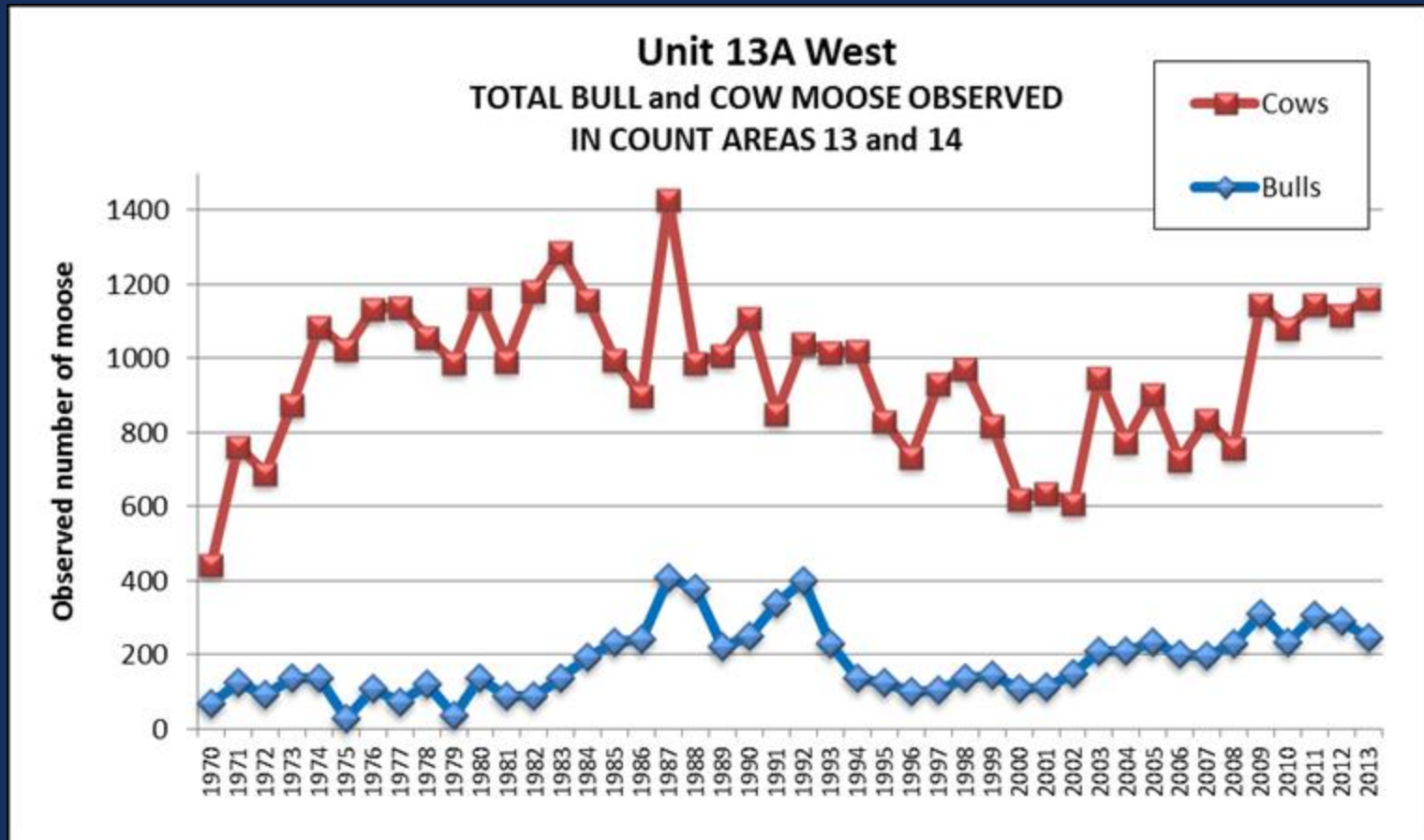
Proposal 127 – Unit 13 Moose

Reauthorize antlerless moose hunt in Unit 13

Support

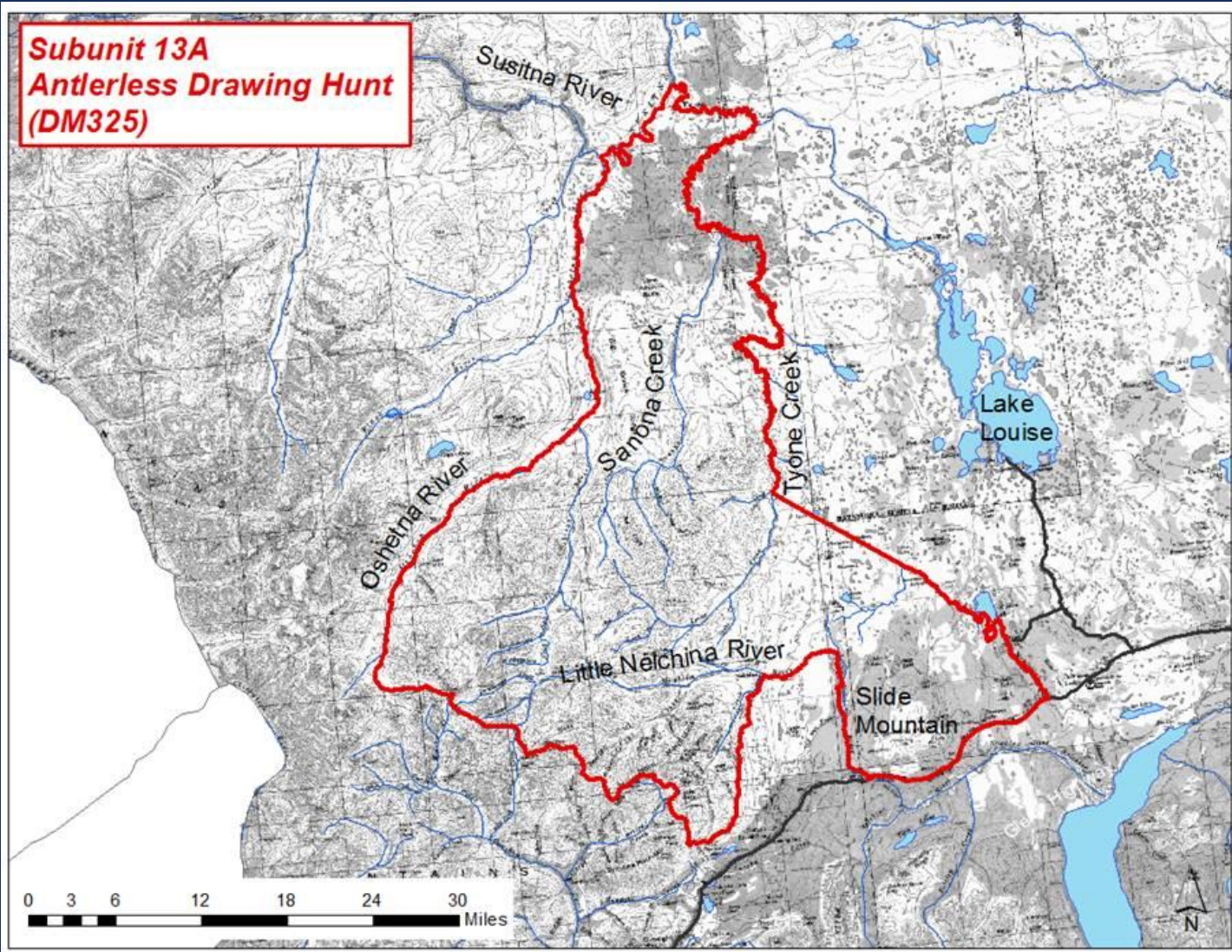
Copper Basin	Support
Paxson	Did not meet
Slana	Did not meet
Denali	Support

Proposal 127 – Unit 13 Moose



- The only proposed antlerless hunt for RY13 is in 13A west
- The 2013 population estimate for 13A is 4,000 (within objective 3,500 – 4,200)
- The 2013 density estimate for 13A west is 1.8 moose / mi² (1.2 cows / mi²)

Proposal 127 – Unit 13 Moose



Proposal 127 – Unit 13 Moose

Reauthorize antlerless moose hunt in Unit 13

Support

Copper Basin	Support
Paxson	Did not meet
Slana	Did not meet
Denali	Support

Proposal 129 – Unit 14 Moose

*Reauthorize antlerless moose hunt
In Units 14 A&B*

Support

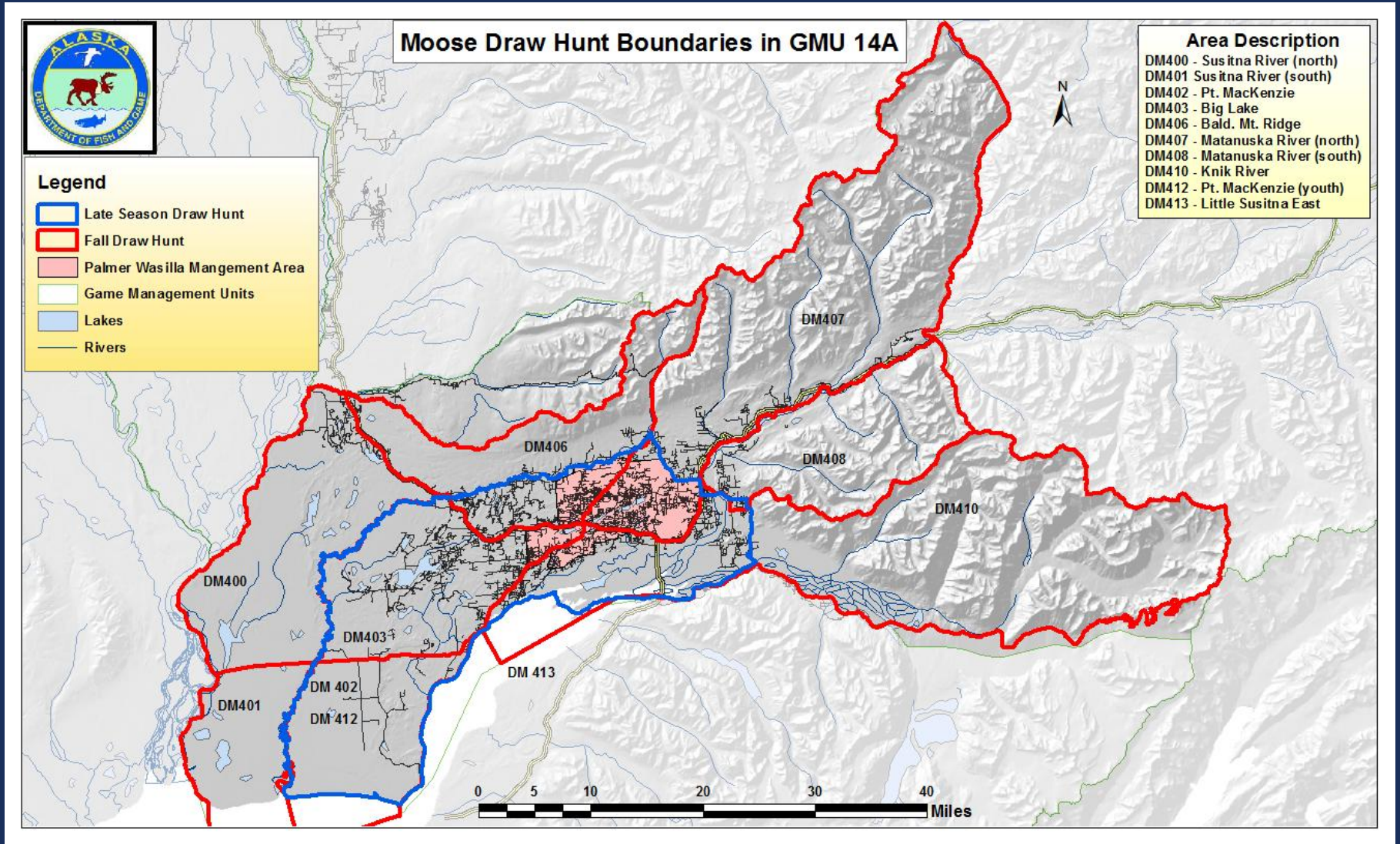
Mat Valley

Support

Proposal 129 – Unit 14 Moose

<u>Unit</u>	<u>Objective</u>	<u>Estimate</u>	<u>Bull:100 Cows</u>	<u>Calves:100 Cows</u>
14A	(6,000-6,500)	8,500	21	45
14B	(2,500-2,800)	2,700	30	28

Proposal 129 – Unit 14 Moose



Proposal 129 – Unit 14 Moose

14A Draw Permit Hunts

Reg Year	Permits	Hunted	Harvest	% Successful Hunters
2009	360	319	214	67
2010	360	311	213	68
2011	400	331	235	71
2012¹	-	-	-	-
2013²	750	621	417	67

¹ Did not conduct hunt to due to severe winter

² Reports to date

Proposal 129 – Unit 14 Moose

“Targeted Hunt”

Third year of the Unit 14A hunt

Authorized, but not applied in Unit 14B

Designed to address public safety issues related to moose

Current Application

- *Areas with high frequency of moose-vehicle collisions that meet additional hunt suitability criteria*
- *Moose defending locations and cannot be driven away*

Proposal 129 – Unit 14 Moose

14A Targeted Moose Hunt

Year	Applicants	Permits	Harvest		
		Issued	Bulls	Cows	Total
2011	432	50	10	34	44
2012	204	198	21	121	143
2013*	1143	50	5	36	41

* Preliminary data

Proposal 129 – Unit 14 Moose

*Reauthorize antlerless moose hunt
In Units 14 A&B*

Support

Mat Valley

Support

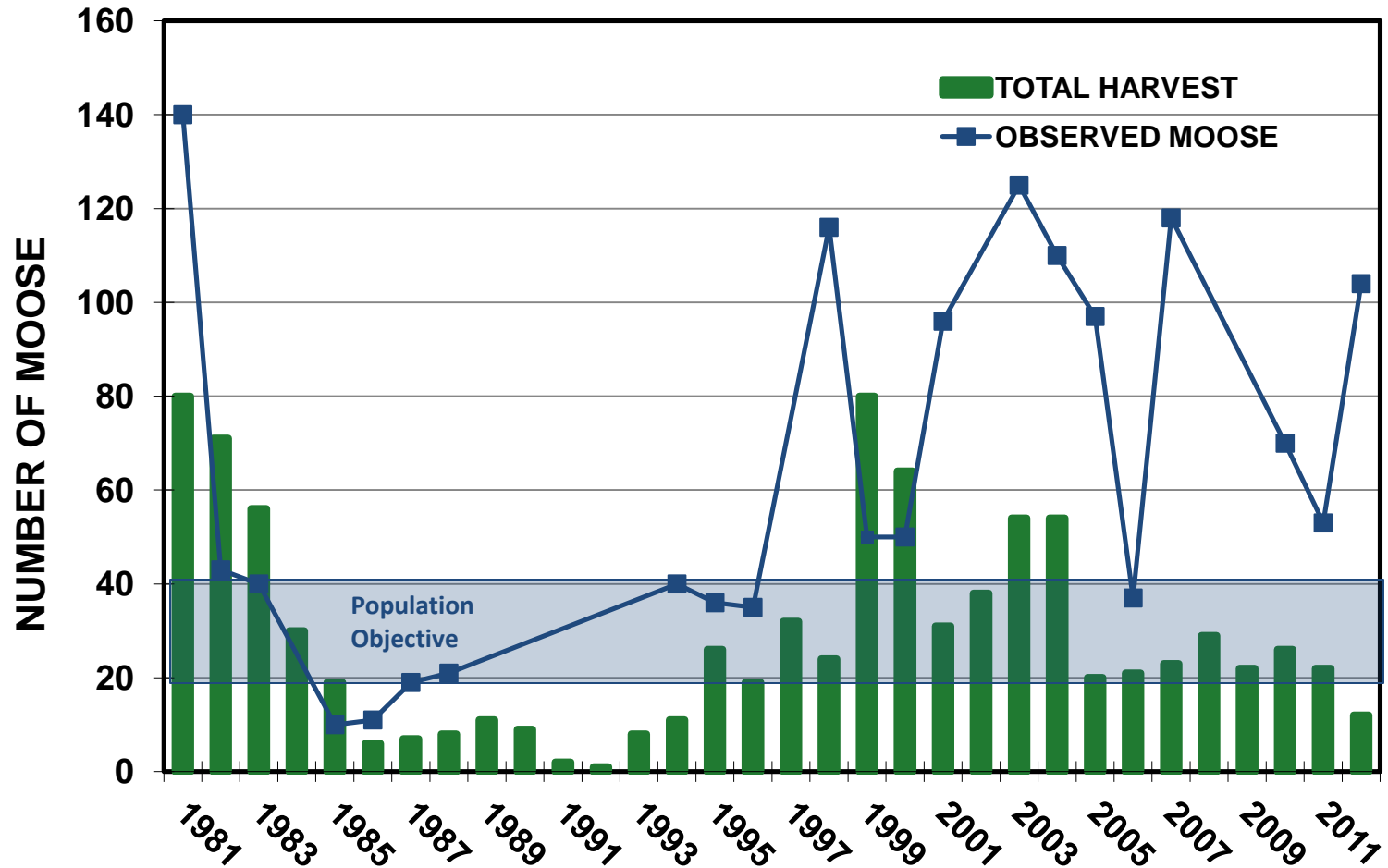
Proposal 131 – Unit 16 Moose

*Reauthorize antlerless moose hunt on
Kalgin Island, Unit 16B*

Support

Proposal 131 – Unit 16 Moose

Population Size and Harvest



Proposal 131 – Unit 16 Moose

*Reauthorize antlerless moose hunt on
Kalgin Island, Unit 16B*

Support

Proposal 132 – Unit 17 Moose

Reauthorize antlerless moose hunt in Unit 17A

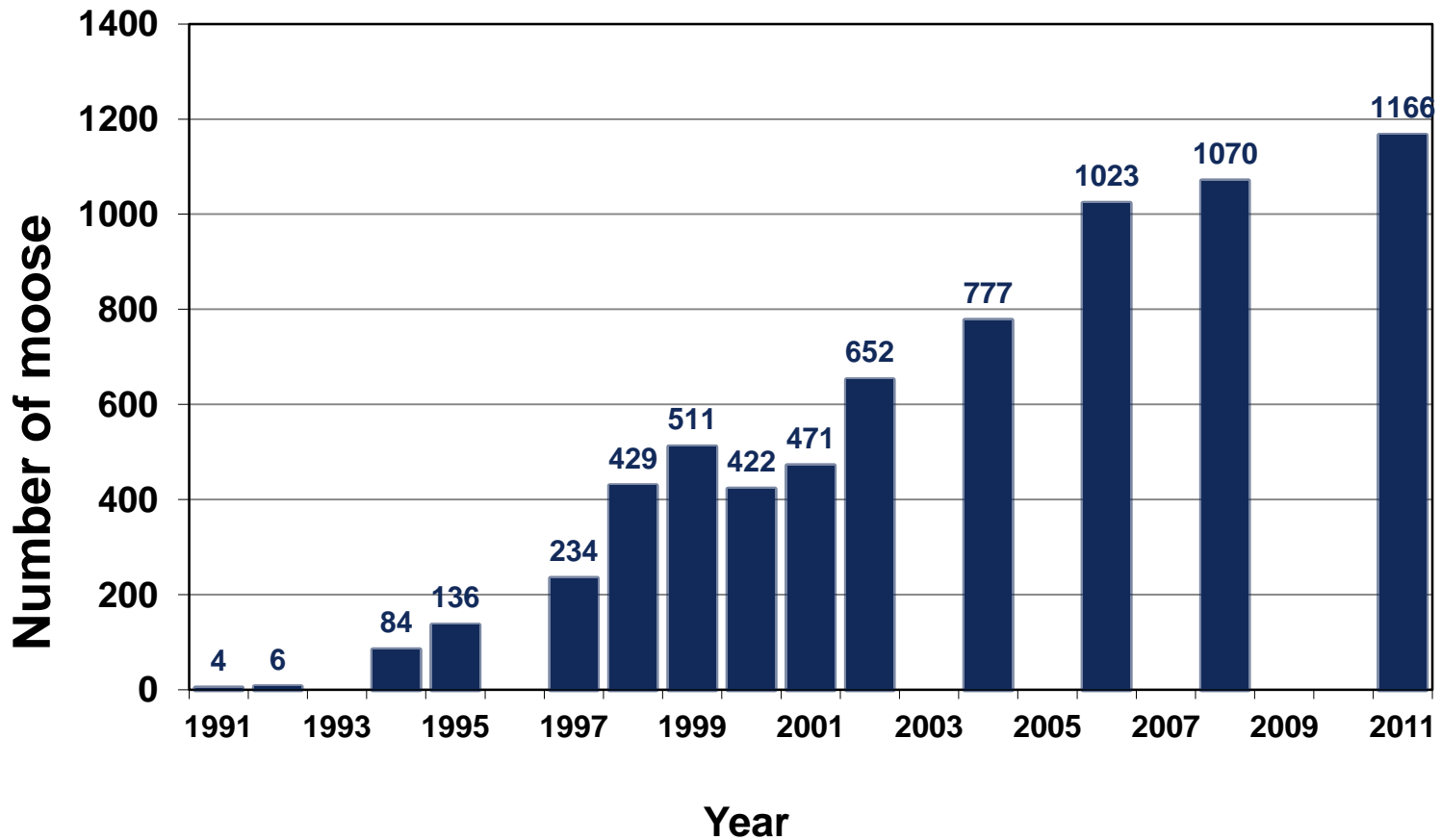
Support

**Nushagak AC
Togiak AC**

**Support
Support**

Proposal 132 – Unit 17 Moose

Population Size and Status



Proposal 132 – Unit 17A Moose

First year of the Unit 17A antlerless moose hunt

Season: January 7 – January 31

February 1 – February 14 (extended by EO)

Harvest quota: 10 cow moose

Proposal 132 – Unit 17 Moose

Reauthorize antlerless moose hunt in Unit 17A

Support

**Nushagak AC
Togiak AC**

**Support
Support**