

Board of Game

February 2013

Palmer Area Overview

Alaska Department of Fish and Game Division of Wildlife Conservation Palmer Area Management Staff

Area Biologist
Olin Albertson



Assistant Area Biologist
Tim Peltier



Palmer Area Issues

- **High growth in the Matanuska-Susitna valley**
- **Increased development affects to wildlife**
- **Predator populations and control activities require a significant amount of staff time**
- **High public service, front office, and sealing demand**
- **Vehicle collisions with moose on road and railroad represent a public safety concern.**

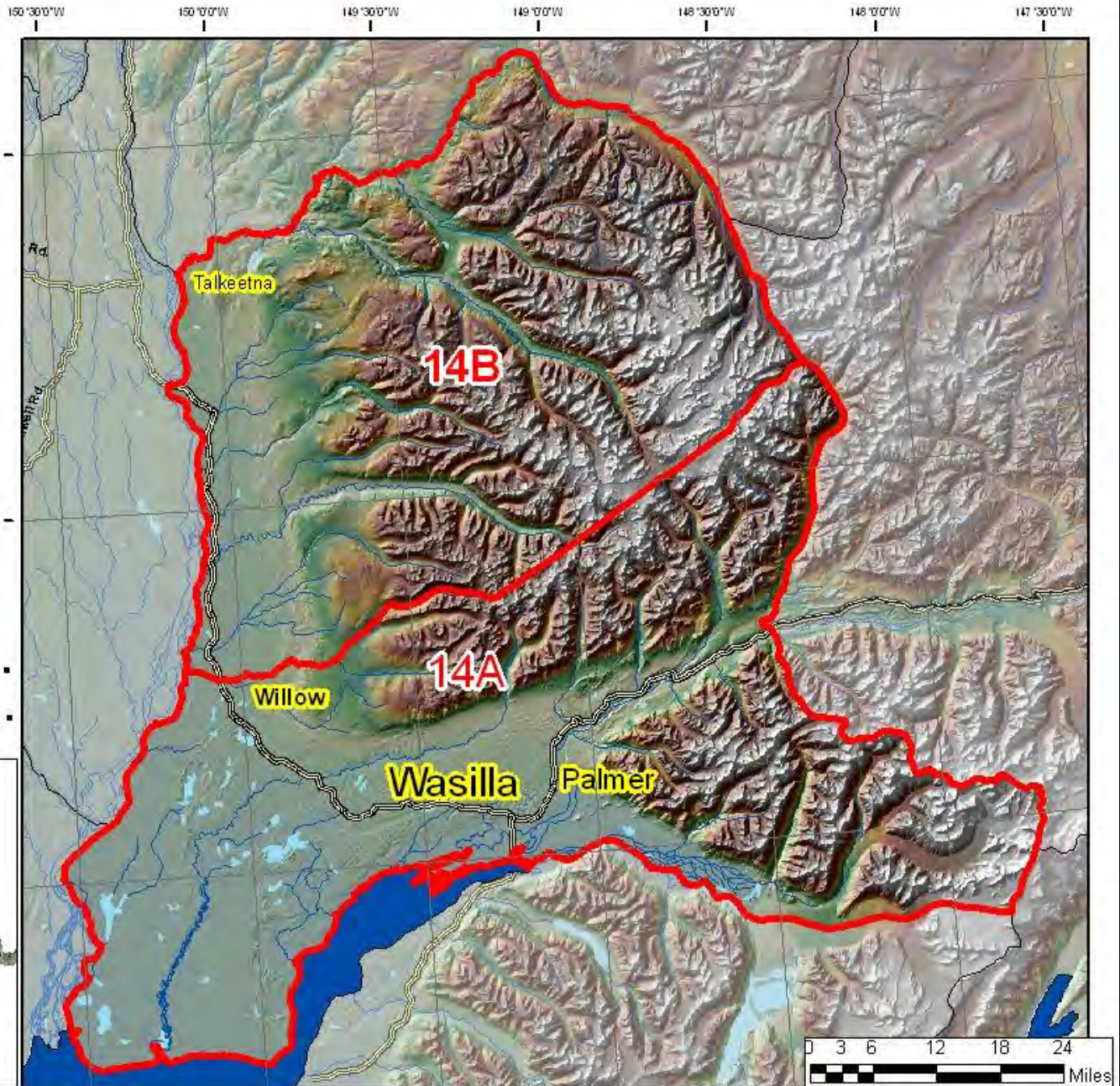
Game Management Units 14A & B



Legend

- Unit 14 Boundries
- Unit boundaries
- Roads
- Lakes
- Rivers

14A - 2,561sq. mi.
14B - 2,152sq. mi.



Game Management Units 16A & B

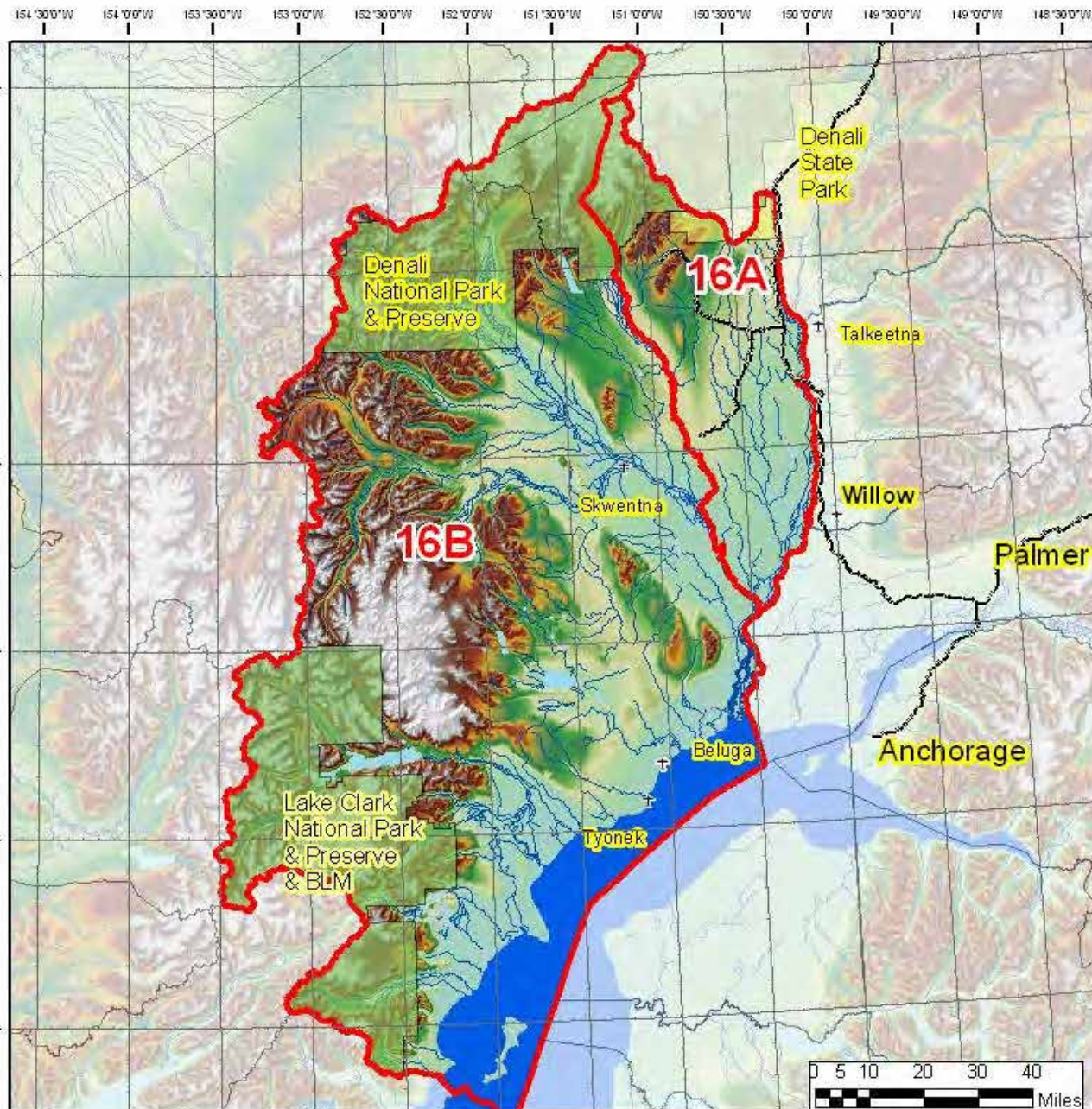


Legend

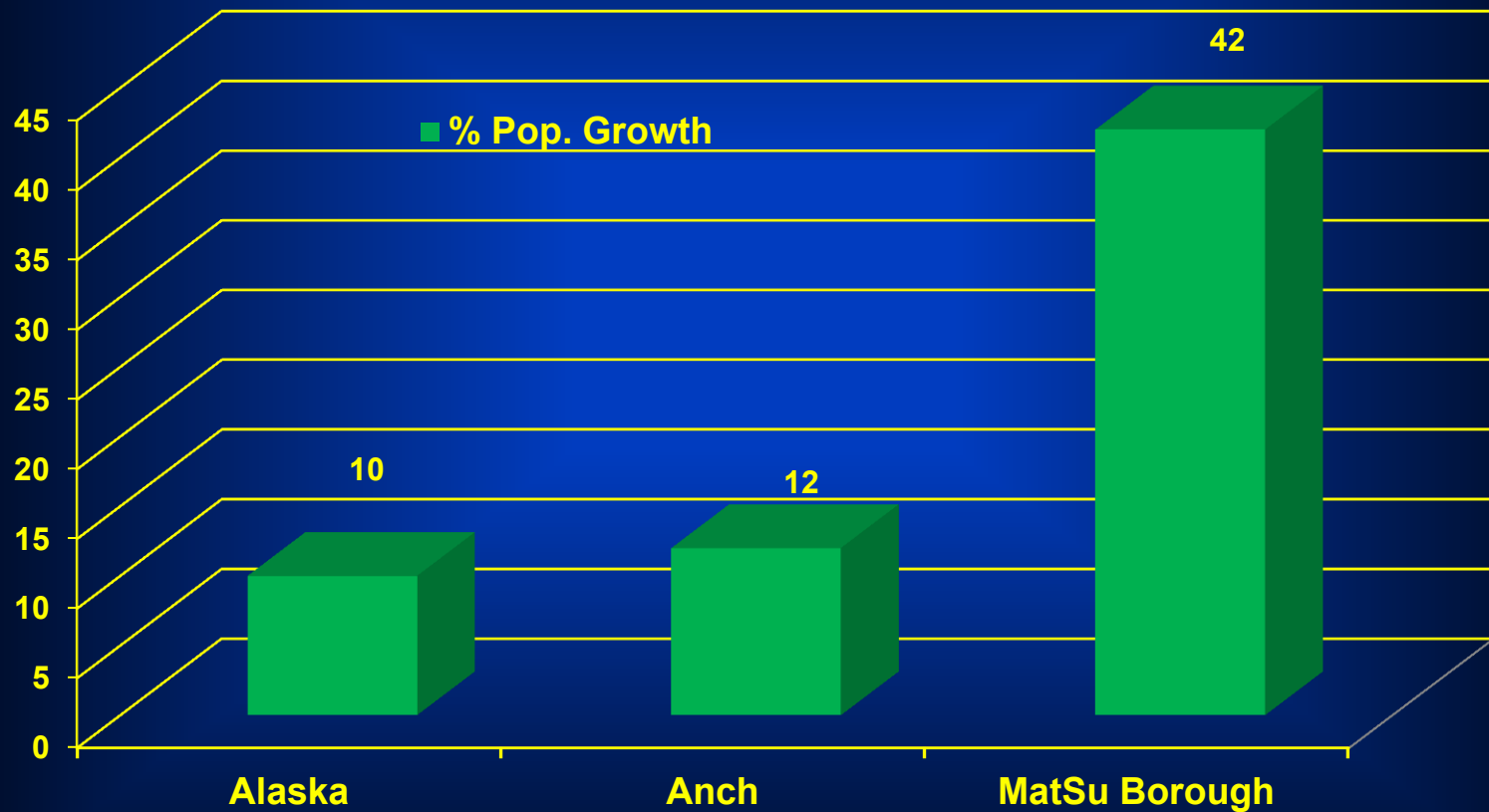
-  Game Management Units
-  Denali National Park
-  Denali State Park
-  Lake Clark National Park
-  Lakes
-  Rivers
-  Roads

16 A = 1,850 sq mi

16 B = 10,405 sq mi



Population Growth in 2000-2009 (compared to the state)



- Estimated Population of over 88,995 (Mat –Su Borough estimate)
- Estimated to be 152,000 by 2034!

Moose

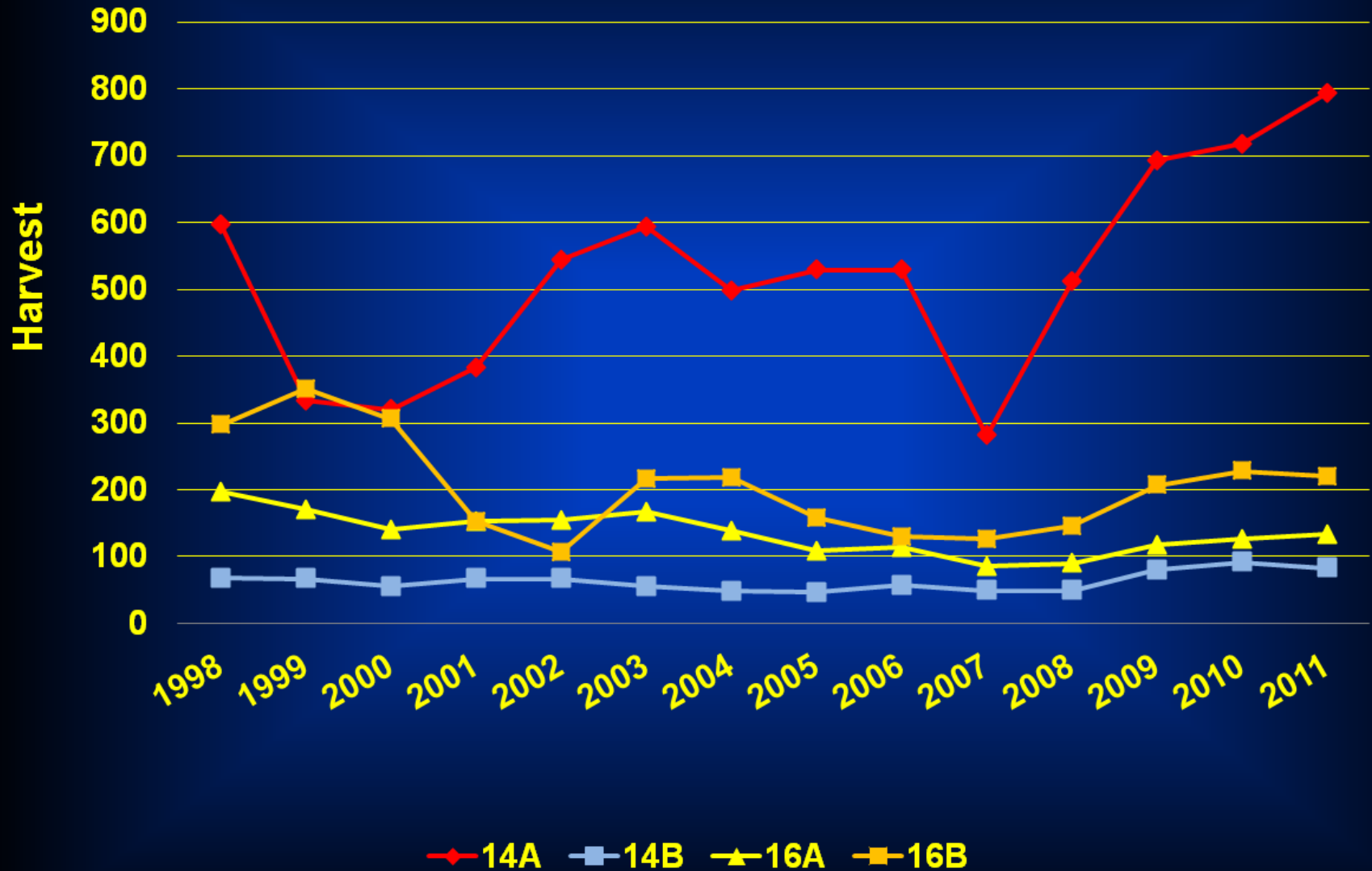


8 Proposals

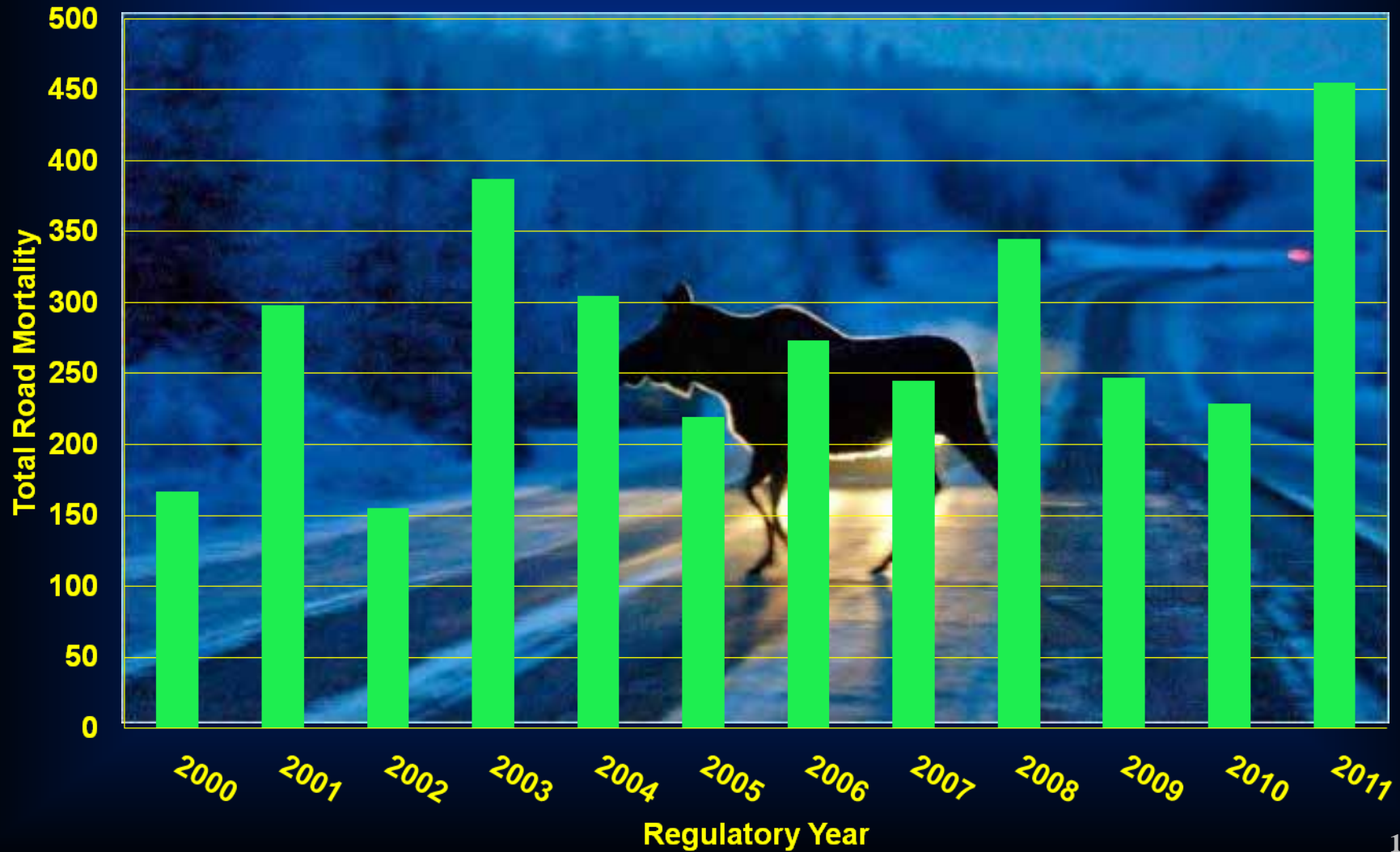
Moose Population Status

| GMU | Objective | Estimate | Bull/100 Cows (Objective) | Calves/100 Cows |
|----------------------|------------------|-----------------|--------------------------------------|------------------------|
| 14A | (6,500-7,500) | 8,000 | 26 (20-25) | 28 |
| 14B | (2,500-2,800) | 1,700 | 34 (≥ 20) | 18 |
| 16A | (3,500-4,500) | 2,600 | 26 (20-25) | 29 |
| 16B | (6,500-7,500) | 6,700 | 52 (20-25) | 19 |
| Kalgin Island | (20-40) | 100 | 20 (≥ 15) | 72 |

Matanuska Valley Moose Harvest 1998 – 2011



Road caused mortality of moose in 14A, 14B, and 16A 2000-2011



Rail caused mortality of moose in 14A and 14B 2000-2011



Sheep

- **(14A) Chugach population stable at lower level**
 - Draw hunt (Any Ram)
- **(14A & 14B) Talkeetna population stable at lower level**
 - General Season (Full Curl)
- **Alaska Range population low but maybe increasing**
 - General Season (Full Curl)

3 Proposals

Mountain Goat

➤ 14A and 14B Talkeetna population: (≤ 50)

➤ No hunting season at this time



➤ Chugach population: stable

➤ Draw and Registration Hunts

0 Proposals

Caribou



- **Rainy Pass (16B) herd: small**
 - **General Season (1 Bull)**
- **14B Western Talkeetna population: stable (increasing?)**
 - **DC590 Draw Permit (1 Caribou)**
- **The department initiated a population study in early 2012 to help identify herd size, movement patterns, and help determine appropriate future harvest levels.**

1 Proposal

Jim Anderson

Black Bear

- **Stable in 14A and 14B**
- **Estimated 3,600 to 4,300 in Unit 16**
- **Predation on moose calves still and an issue in unit 16**
- **Unit 16 Black Bear Control in 2007, and is on going**

3 Proposals

Brown Bear

- Stable in 14A and 14B
- Estimated 625 to 1250 in Unit 16(B)
- Increased harvest opportunity in 16B in 2005
- Predation on moose still a concern
- Few nuisance bear complaints near communities

3 Proposals

Wolf

- **Stable at lower levels (Unit 14A)**
- **Stable (14B)**
- **Reduced numbers (Unit 16 PCA) since 2003**
- **Predation on moose a concern**
- **SDA Wolf Control in Unit 16B from 2004**
- **SDA Wolf Control Area expanded to include portions of Unit 16A Spring 2006**

2 Proposals



Furbearers

- **Beaver: Stable - Issued 16 nuisance beaver control permits last year**
- **Muskrat – Stable**
- **Lynx: Hare at low end of cycle – Decreasing**
- **Marten: Stable to decreasing**
- **Mink: Stable**
- **Ermine: Stable**
- **Otter: Stable**
- **Coyote: Increasing?**
- **Fox: Stable**
- **Wolverine: Low - Stable**

0 Proposals



Habitat Enhancement Activities



Predator Control in Unit 16



Intensive Management

Predator Control in GMU 16

- (1989-90) Moose population reduced following severe winter. Population declines below objective.
- (2004) SDA for wolves begins December in unit 16 Predator Control Area (PCA).
- (2006) Western Portion of 16A Added to PCA.
- (2006) Black bear baiting liberalized to including SDA within 300ft.
- (2007) Black Bear Control implemented.
- (2009) Black bear snaring implemented in control area.
- (2011) Reg. year 2010 - Brown Bear control started in Brown Bear Control Area (BBCA), Brown bear snaring added.
- (2011) Fall moose survey in 16B Middle puts moose population estimate in unit 16B over the lower population objective.



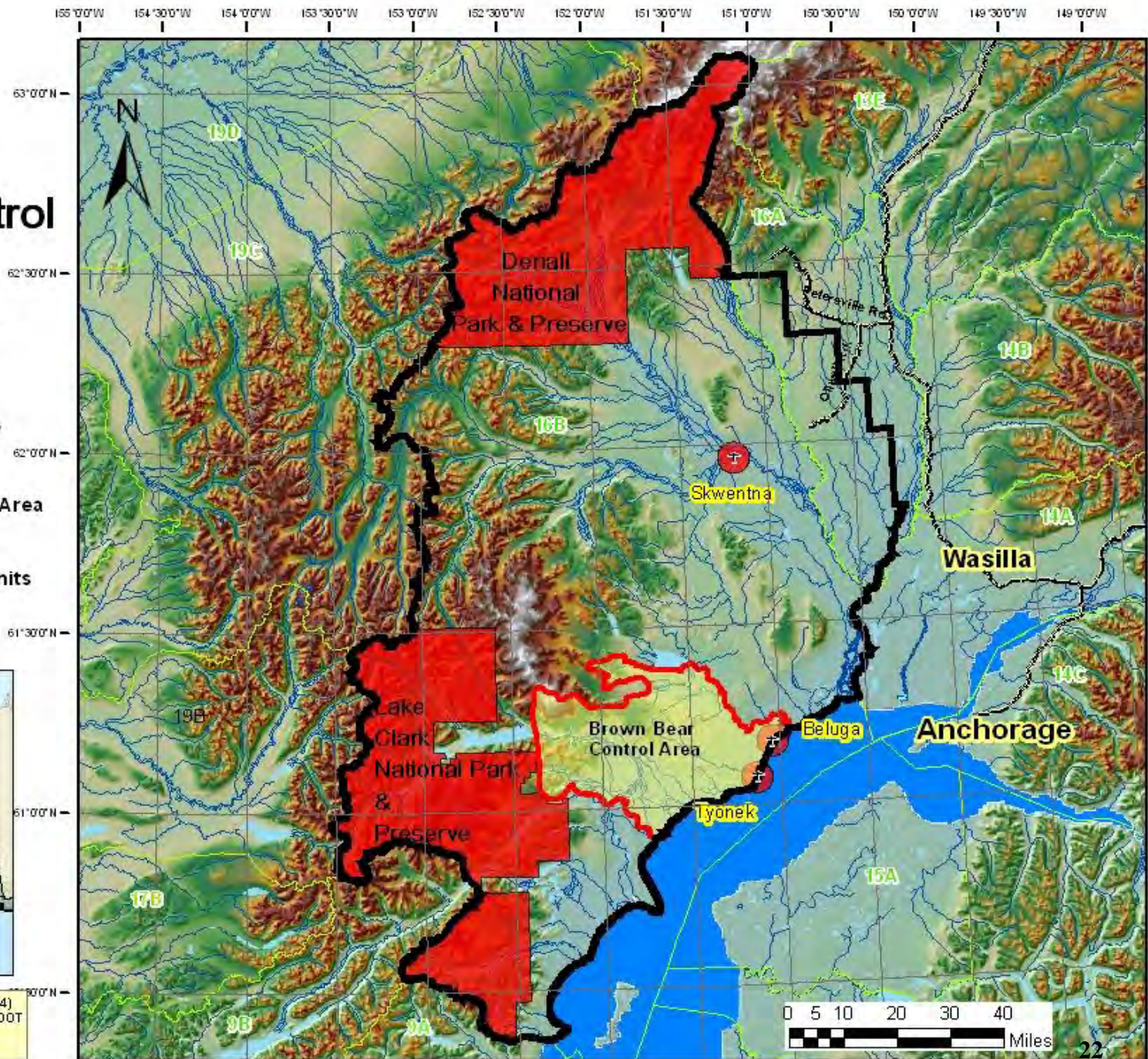
Predator Control Areas GMU 16

Legend

- Unit 16 PCA boundary
- Roads
- Brown Bear Removal Area
- Land closed to SDA
- Game Management Units
- Lakes
- Rivers



Map Projection: Alaska Albers NAD83 (WG S84)
Data Sources: ADFG, USGS, BLM, AK DNR, DOT
Alaska Department of Fish & Game
Date: January 14, 2013



Wolf Intensive Management Objectives GMU 16(B)

- Reduce the spring wolf population to 22 – 45 wolves

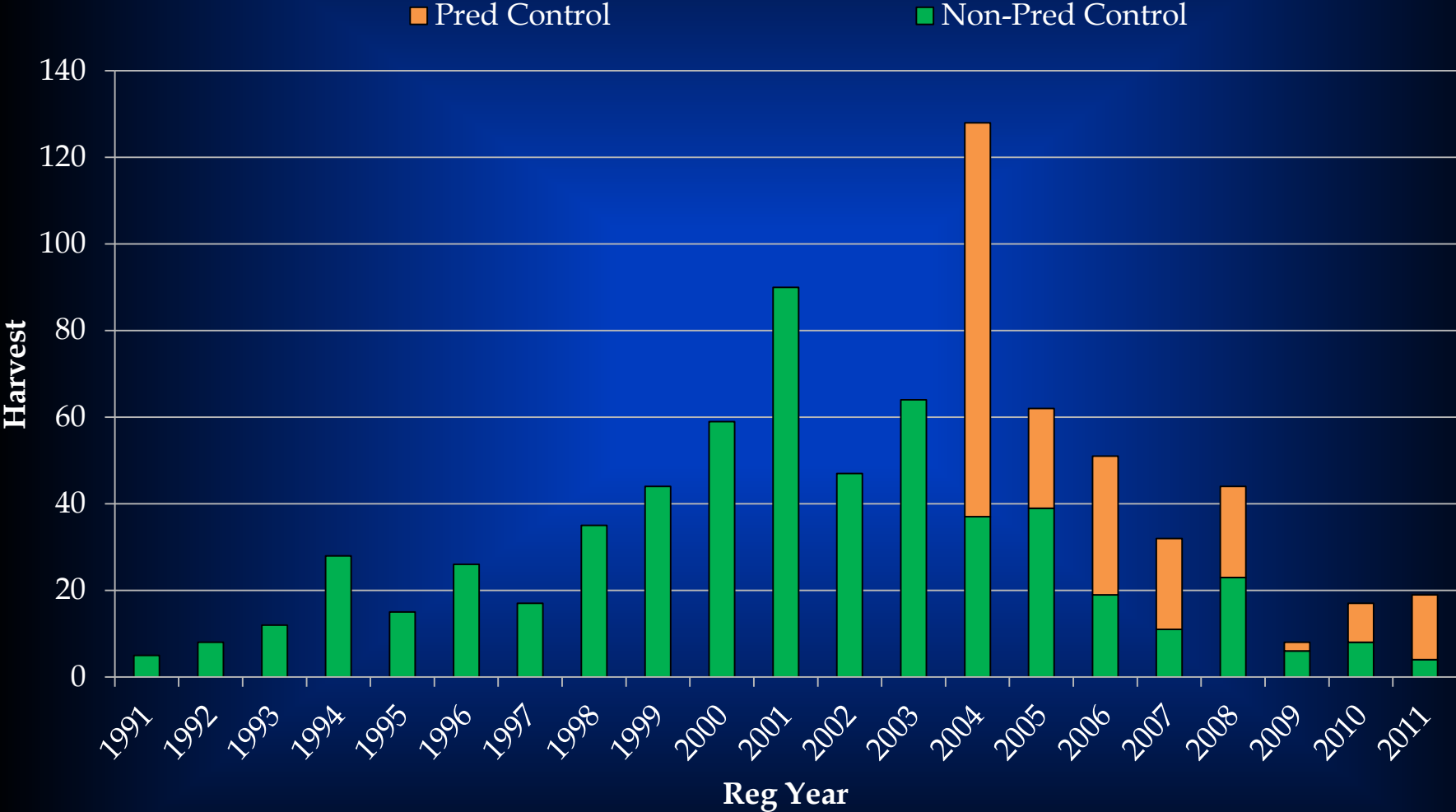
Wolf Population Estimates

- 2003 estimate was 175-180 wolves in unit 16
- Current estimates

16B Minimum of 35 - 55

Wolf surveys in unit 16 are planned for February or March 2013

Unit 16 Wolf Harvest (1991-2011)



Black Bear Intensive Management Objectives for GMU 16(B)

- **Reduce the black bear population to 600 – 800 bears**

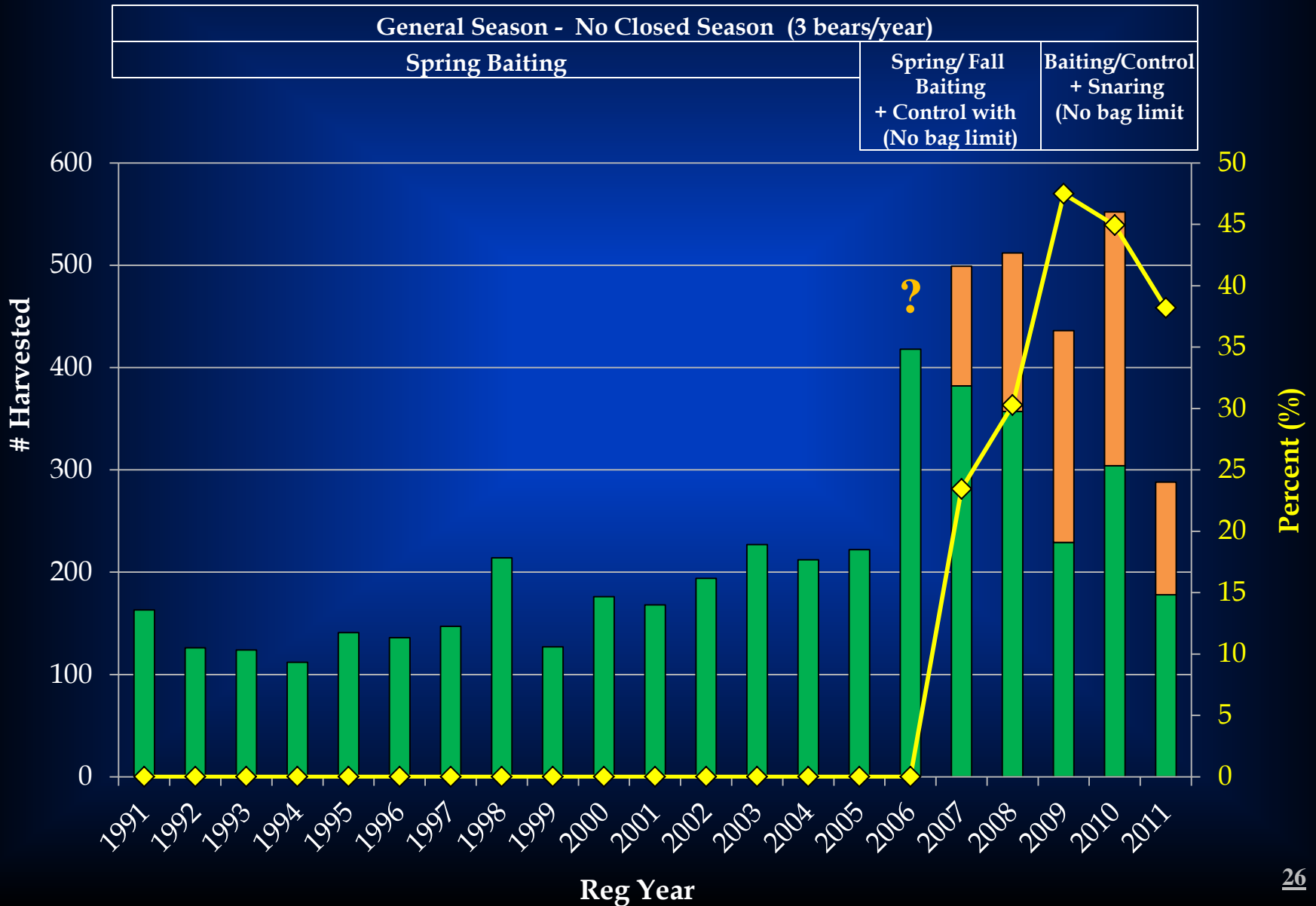
Black Bear Population Estimates

16B

3,200 – 3,800

Unit 16 Black Bear Harvest by Permit Type, 1991-2011

■ Pred Control
 ■ General Harvest
 ◆ % Harvest (Control)



Annual Black Bear Snaring Control 2009 - 2012

| | Annual Year | | | |
|-------------------------|-------------|------|------|------|
| | 2009 | 2010 | 2011 | 2012 |
| Permittees Participated | 7 | 14 | 32 | 10 |
| Black Bears Snared | 77 | 62 | 56 | 14 |
| Brown Bears Released | 5 | 7 | 2 | 3 |

Brown Bear Intensive Management Plan Objectives for GMU 16(B)

- **Reduce the brown bear population to 250 – 300 bears**

Brown Bear Population Estimates (2007)

16B

625 – 1,250



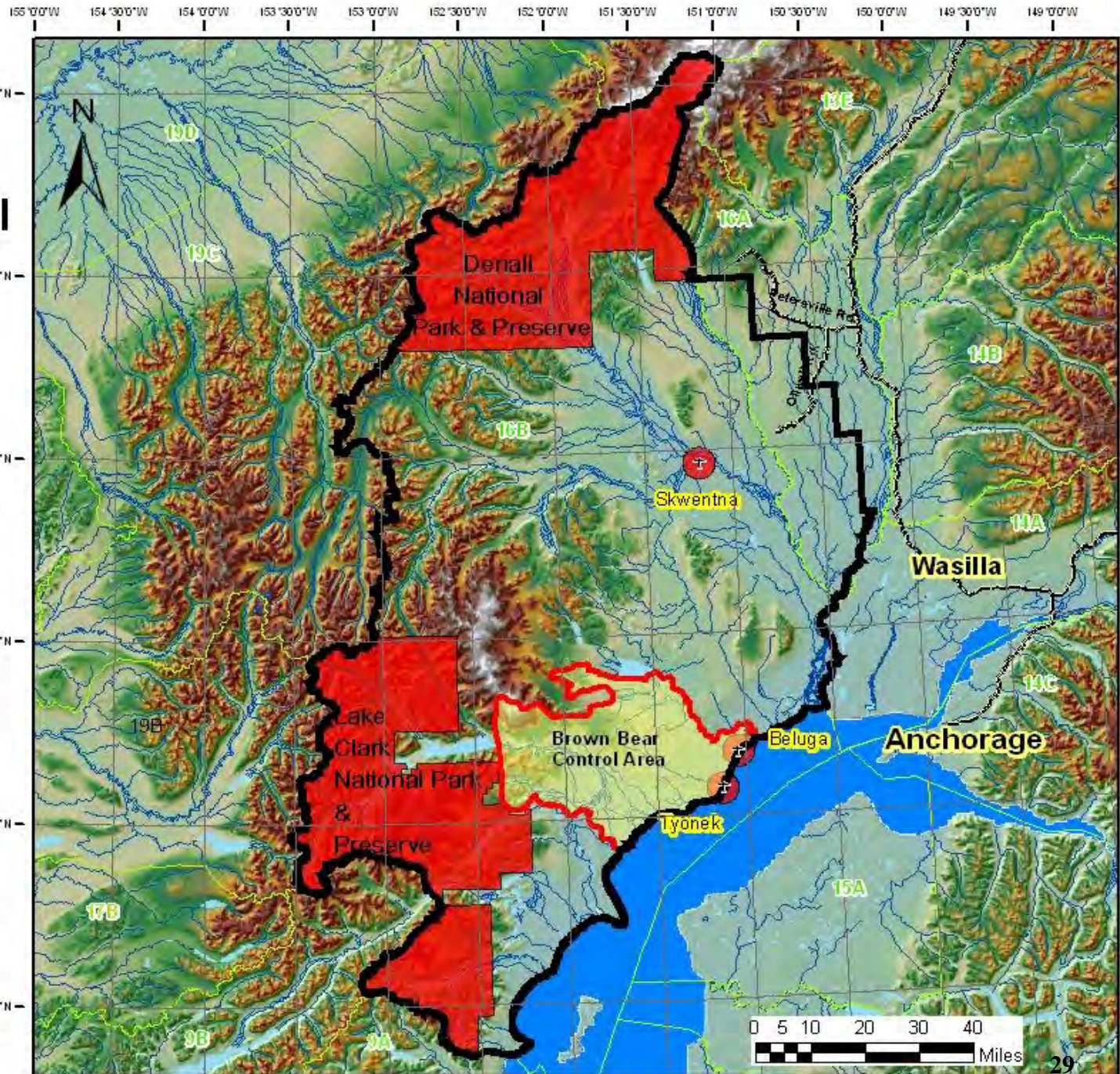
Predator Control Areas GMU 16

Legend

- Unit 16 PCA boundary
- Roads
- Brown Bear Removal Area
- Land closed to SDA
- Game Management Units
- Lakes
- Rivers



Map Projection: Alaska Albers NAD83 (WG S84)
 Data Sources: ADFG, USGS, BLM, AK DNR, DOT
 Alaska Department of Fish & Game
 Date: January 14, 2013



Unit 16(B) Brown Bear Control Program



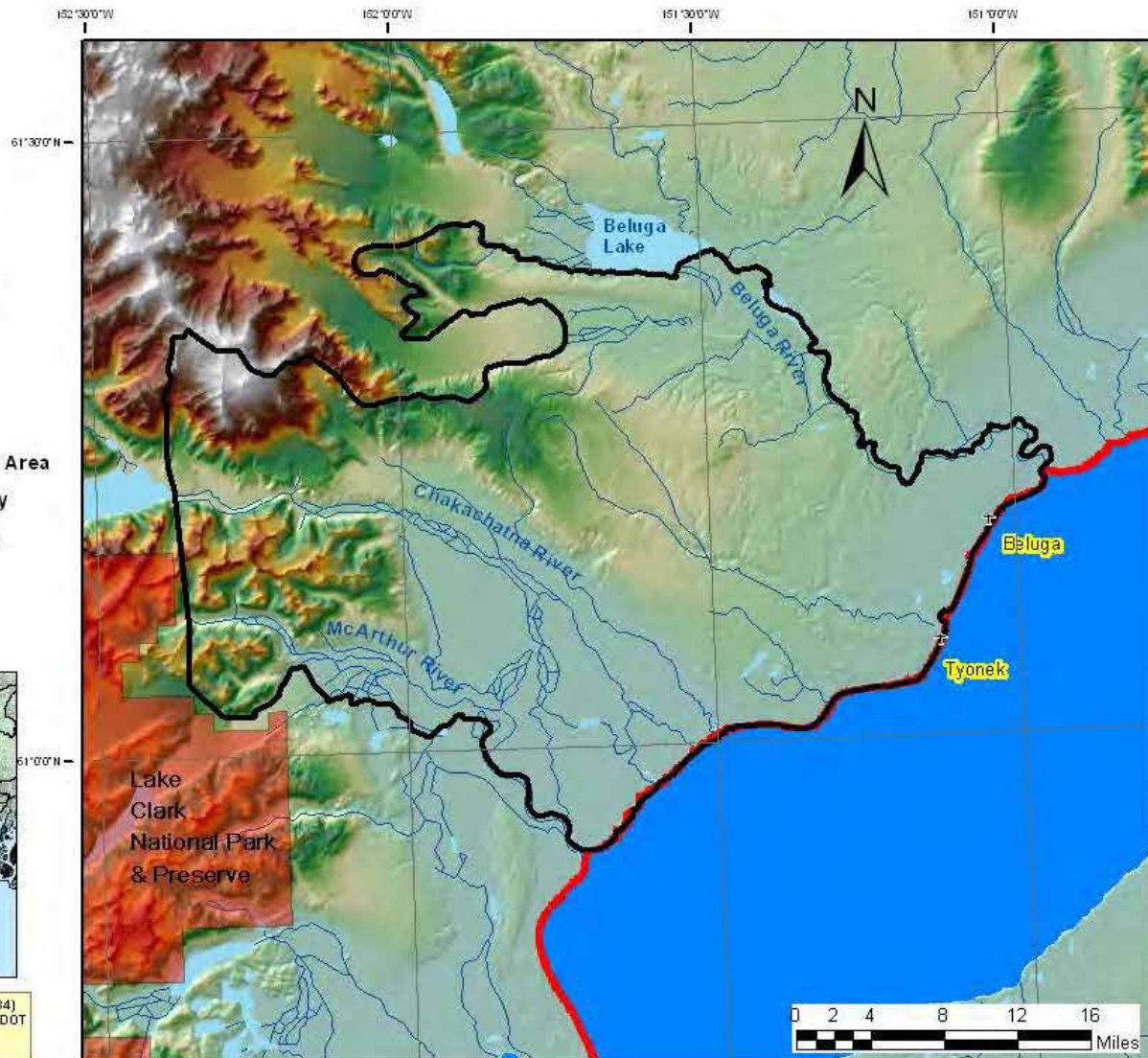
Brown Bear Control Area GMU 16

Legend

- Brown Bear Removal Area
- Unit 16 PCA boundary
- Closed Federal Land
- Lakes
- Rivers



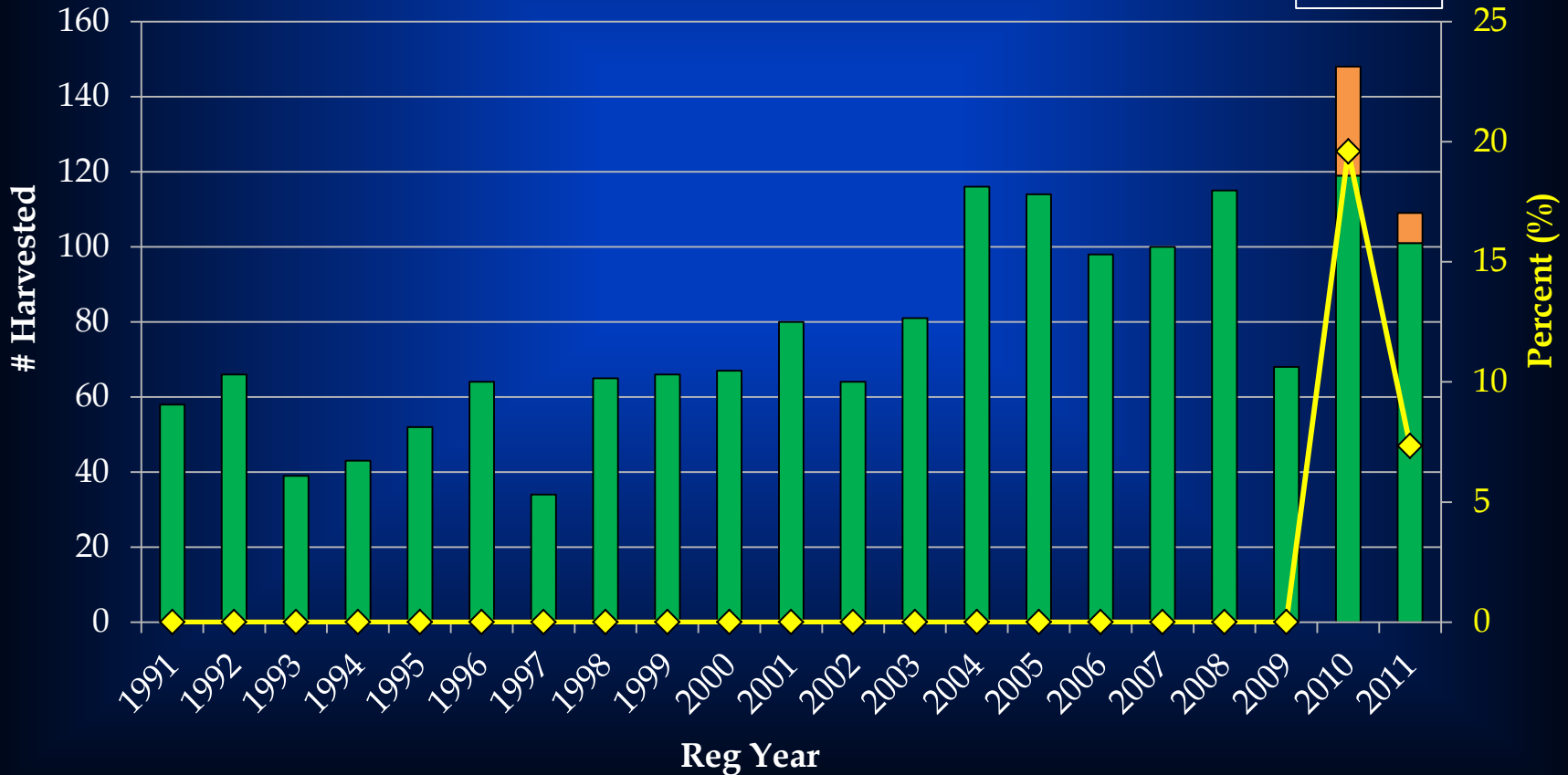
Map Projection: Alaska Albers NAD83 (WG 84)
Data Sources: ADFG, USGS, BLM, AK DNR, DOT
Alaska Department of Fish & Game
Date: January 14, 2013



Unit 16B Brown Bear Harvest by Permit Type (1991-2011)

Control General Harvest % Control Take

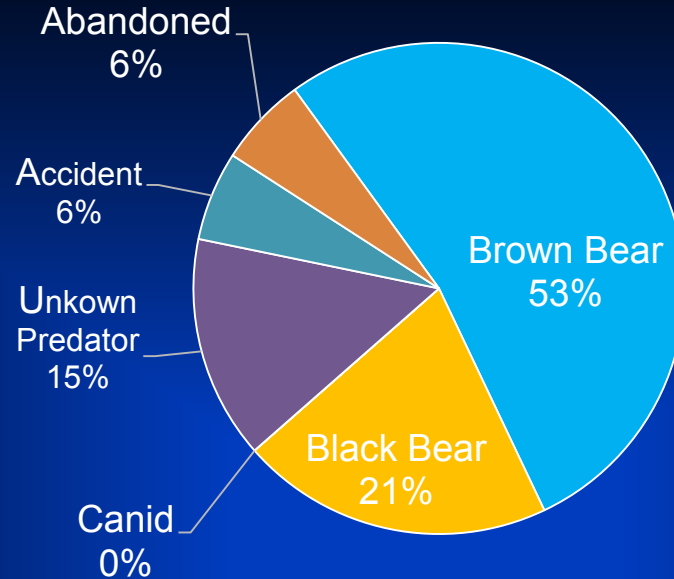
| | | | |
|---|---|---|---|
| Sept 1 st - May 25 th | Aug 10 th - May 25 th | Aug 10 th - May 30 th | Jul 1 st - June 30 th |
| 1 bear in 4 yrs) | 1 bear / yr) | (2/yr) | Control/ Snaring |



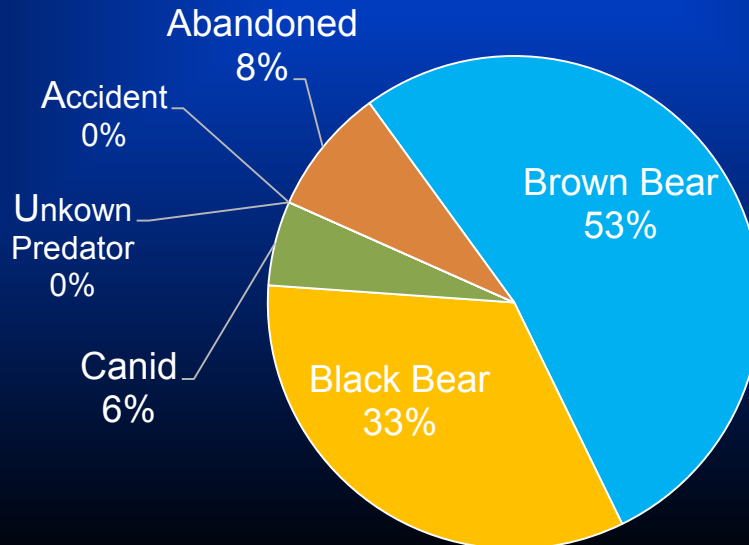
Annual Brown Bear Snaring Control 2010-2012

| | Annual Year | |
|-------------------------|-------------|------|
| | 2011 | 2012 |
| Permittees Participated | 32 | 10 |
| Brown Bears Snared | 21 | 2 |

16B - Proportion of Known Moose Calf Mortality by Cause (1)



U 16B - Proportion of Known Moose Calf Mortality by Cause (2)



Moose Population Status

GMU 16B

Population Objective

Estimate

Bull/100 Cows

(6,500-7,500)

6,700

52

Harvest Objective

Current Harvest

Surplus Bull Estimate

(310 -600)

198

300-400

A black dog is captured in a dynamic, mid-air pose as it runs through a snowy landscape. The dog's body is angled towards the left, with its front legs tucked and its back legs pushing off the snow. The snow is bright white and appears to be kicked up by the dog's movement. The background shows a line of bare, brown trees under a clear sky. The overall scene is bright and energetic.

The End