

GMU 13

RC-2

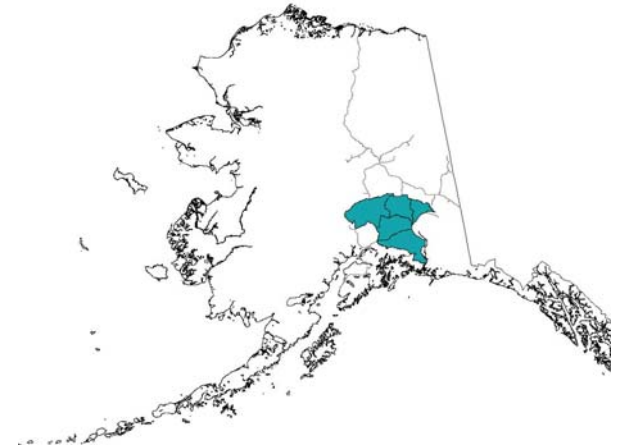
***Moose and Caribou
Population / Hunt Review***

Alaska Board of Game - 2 July 2008

ADF&G Area Staff:

Bob Tobey

Becky Schwanke





GMU 13 Moose Considerations

- Due to 7 years of Active Wolf Management (2000-2007) Unit 13 moose counts have increased 4% annually [during the 7 years prior to active management, the counts had declined by 4% annually]
 - The increase has only been observed in 3 of the 5 subunits (not in 13D or 13E)

- Loss of Active Wolf Management at this stage of the process is expected to result in a reversal of the moose population trend within 2 years

- ADF&G is in the planning stage for long-term unit-wide moose management incorporating habitat issues as well as population composition changes

- ADF&G intends to have a long-term unit-wide moose management strategy available for presentation at the March 2009 BOG meeting

Existing GMU 13 Hunts

2000-07 Ave. Harvest

□ *Moose*

■ General Hunt

□ Residents only, bag limit - 1 SF/50" 4BT, 1-20 Sept. 493

■ TM300 (State subsistence)

□ Residents only, bag limit - 1 bull, 15-31 Aug. 48

■ FM313/314 (Federal subsistence)

□ Local Residents only, bag limit – 1 bull, 1 Aug – 20 Sept. 50

□ *Nelchina Caribou*

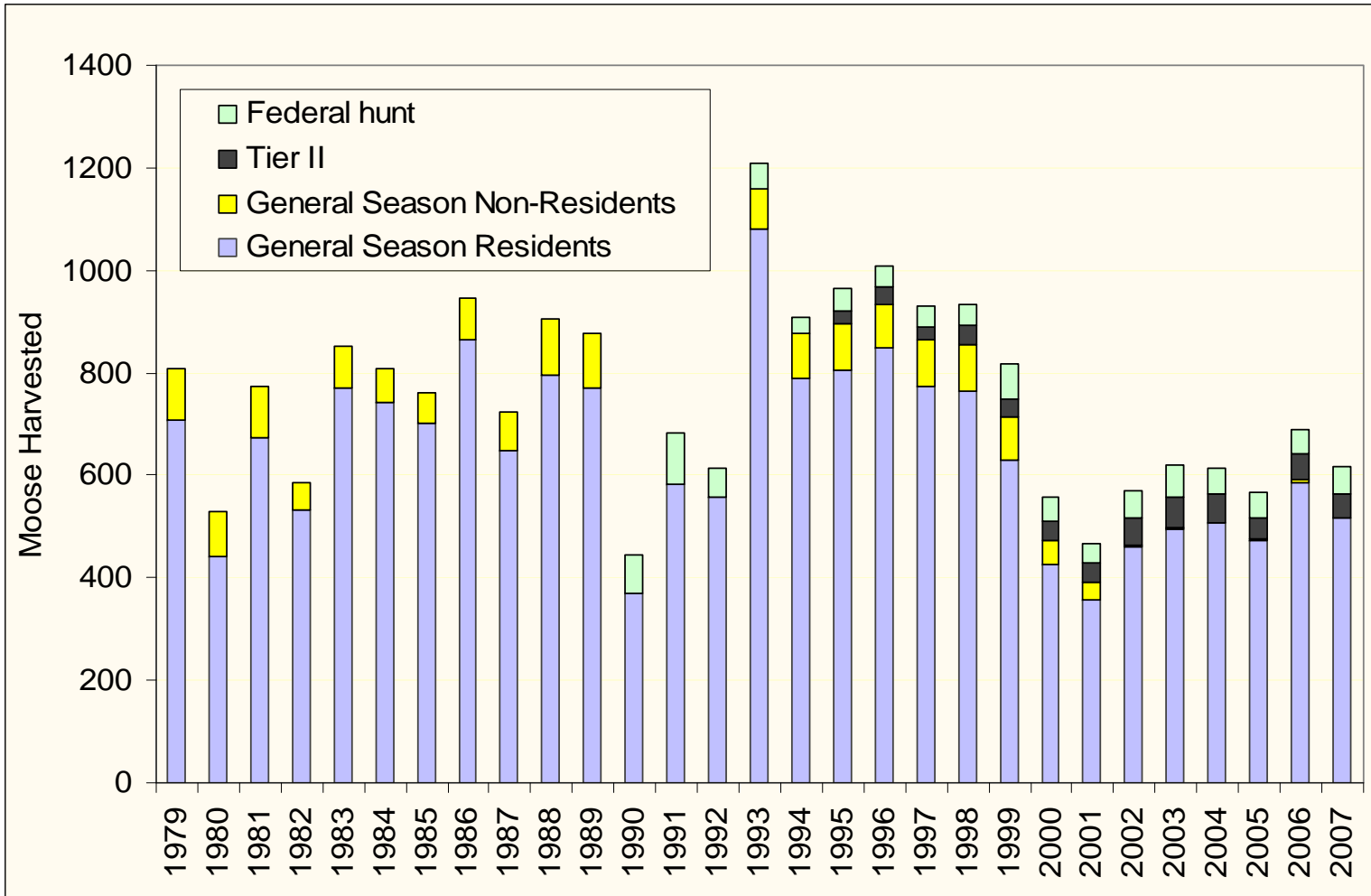
■ TC566 (State subsistence)

□ Residents only, bag limit - 1 caribou or 1 bull, 10 Aug. – 20 Sept. 1262
and 21 Oct. – 31 March

■ FC 412/513/514 (Federal subsistence)

□ Local Residents only, bag limit – 1 caribou, 10 Aug. – 30 Sept. 435
and 21 Oct. – 31 March

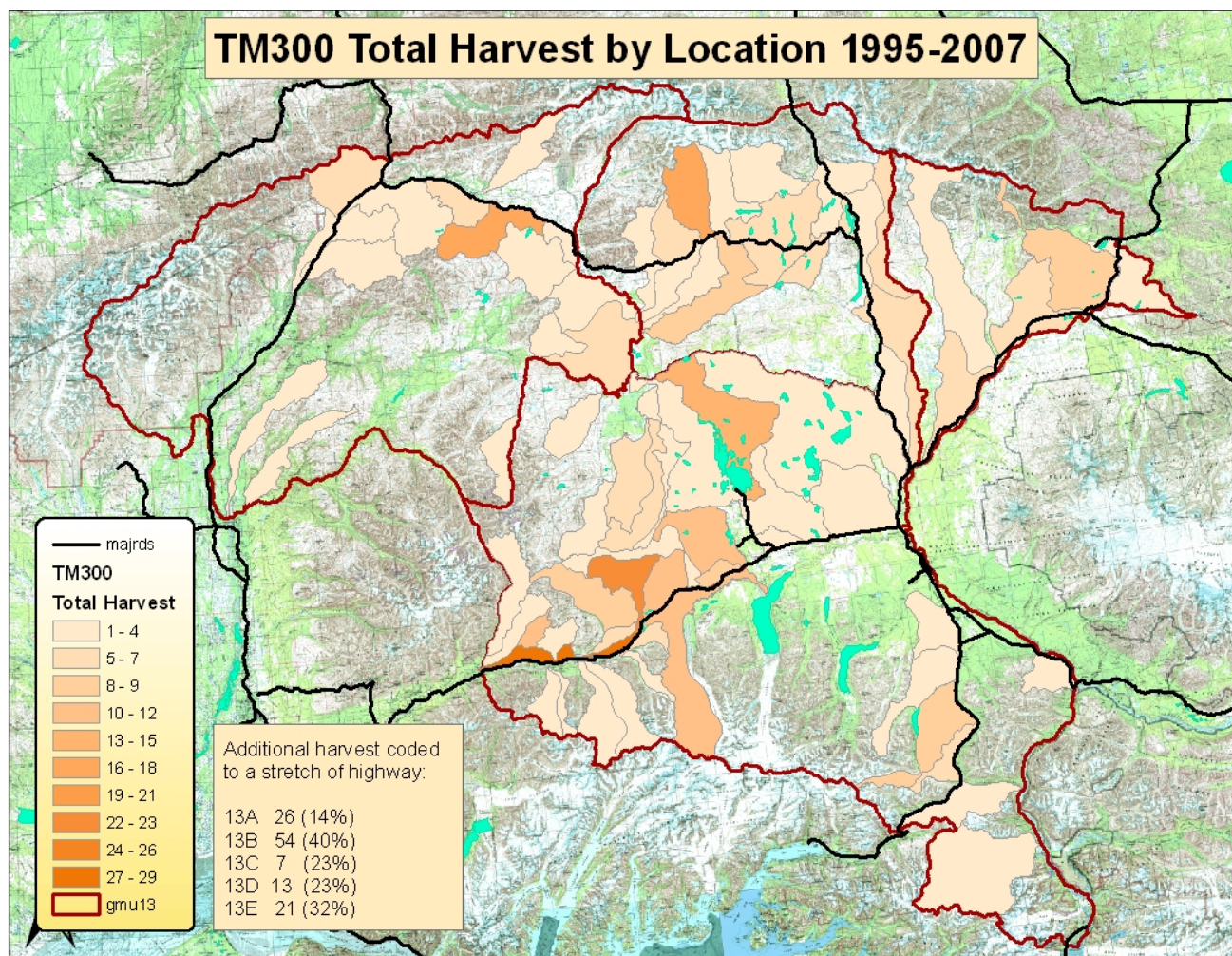
GMU 13 Moose Harvest



GMU 13 Moose Hunter Residency

Regulatory year	Number of State Moose Hunters				<i>Local Percentage</i>	
	General Season Moose		Tier II Moose		<i>General</i>	<i>Tier II</i>
	Locals	Non-locals	Locals	Non-locals		
1995	504	4819	91	28	9%	76%
1996	487	4864	98	33	9%	75%
1997	461	4804	99	11	9%	90%
1998	476	4220	105	26	10%	80%
1999	495	3674	94	23	12%	80%
2000	401	2913	114	12	12%	90%
2001	393	2384	116	10	14%	92%
2002	369	2305	80	48	14%	63%
2003	401	2368	56	74	14%	43%
2004	365	2533	67	48	13%	58%
2005	380	2698	72	55	12%	57%
2006	437	3009	62	67	13%	48%
2007	353	2772	67	61	11%	52%

State Tier II (TM300) Harvest Areas

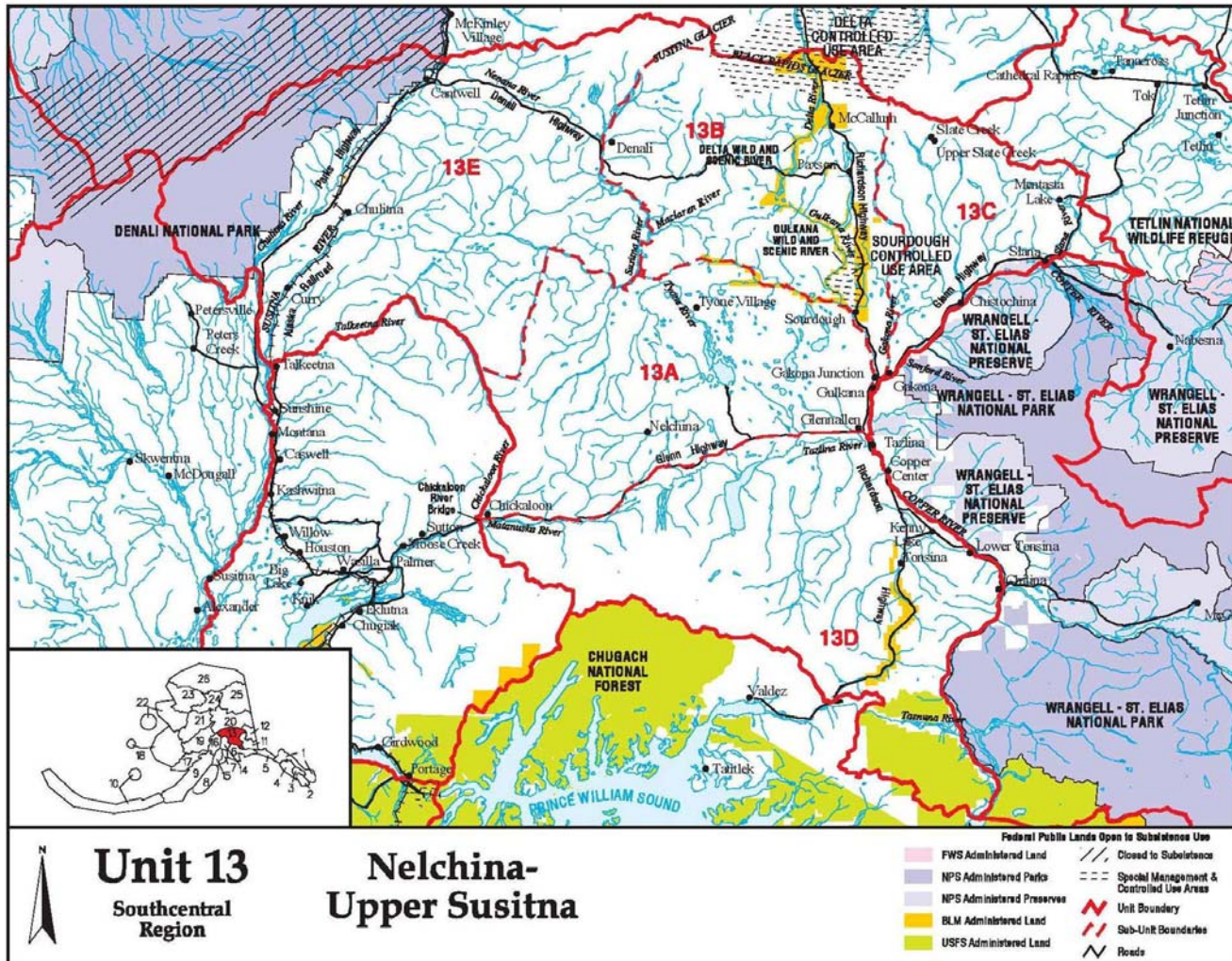


~27% of TM300 moose are taken using a highway vehicle (method of transportation; 1995-2007)

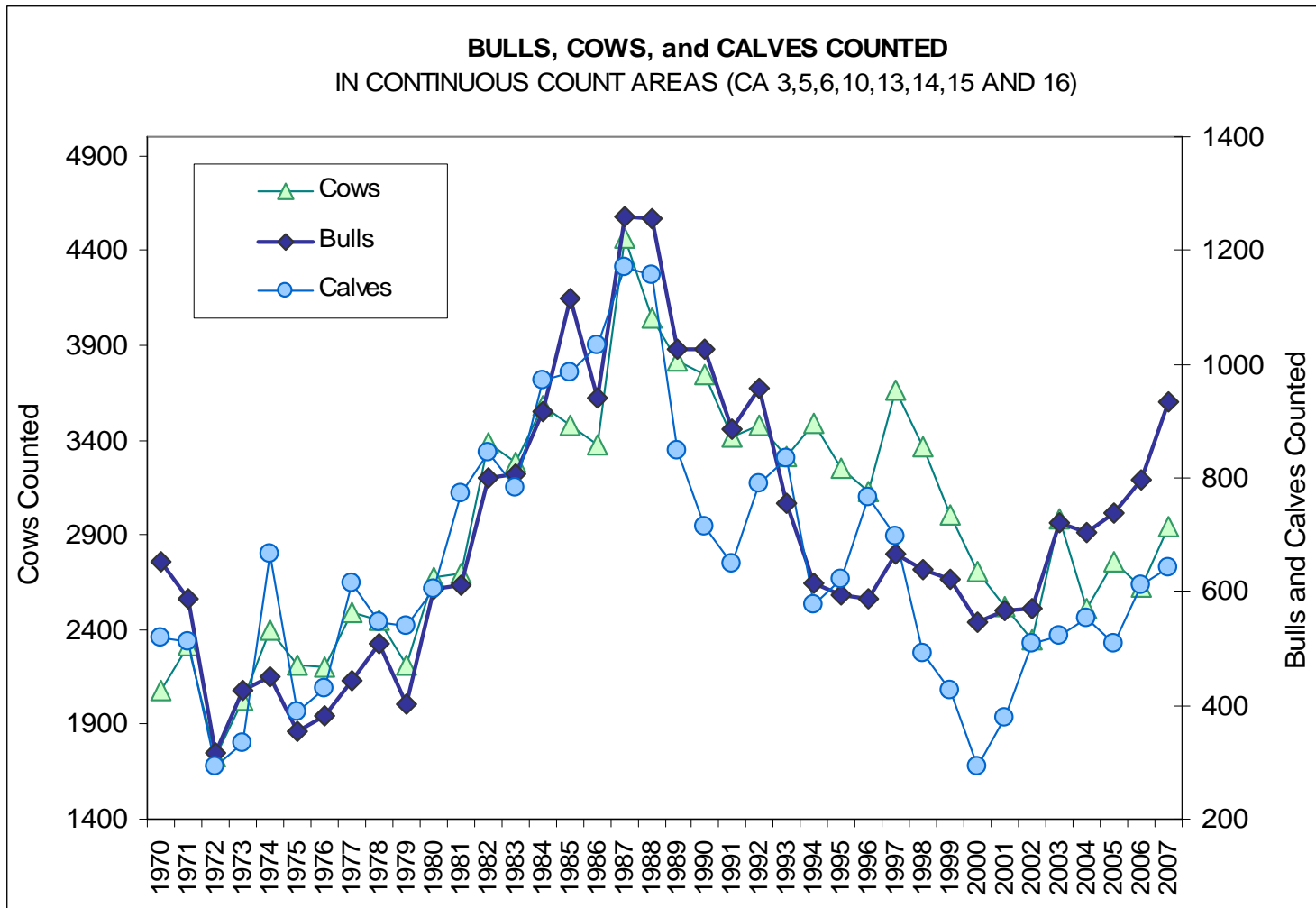
The most popular transportation for successful TM300 hunters is the 3/4wheeler (42%) although most harvest is very close to the road system

GMU 13 LAND STATUS

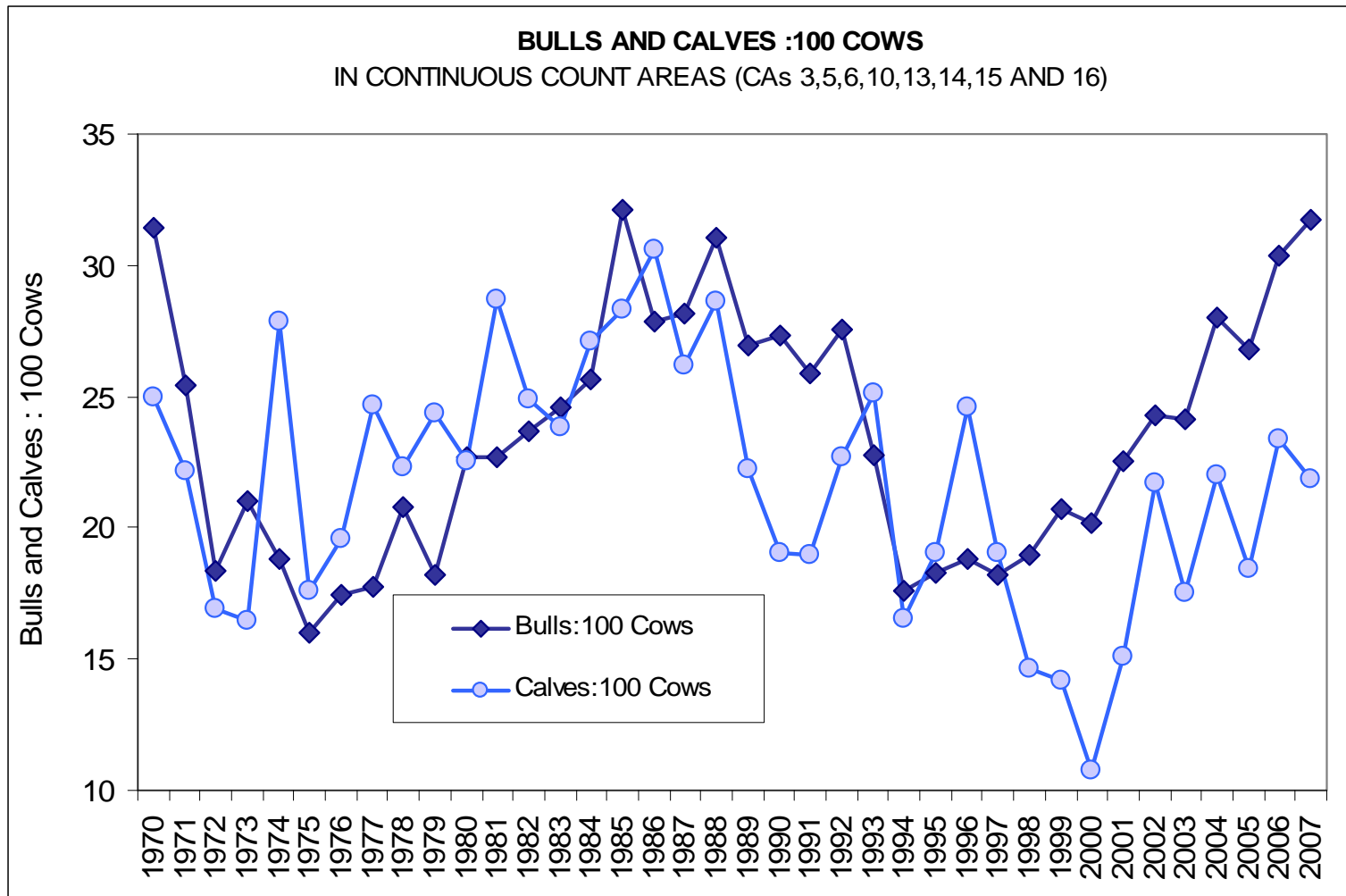
Federal Subsistence Hunt Areas (dark grey)



MOOSE SURVEY DATA

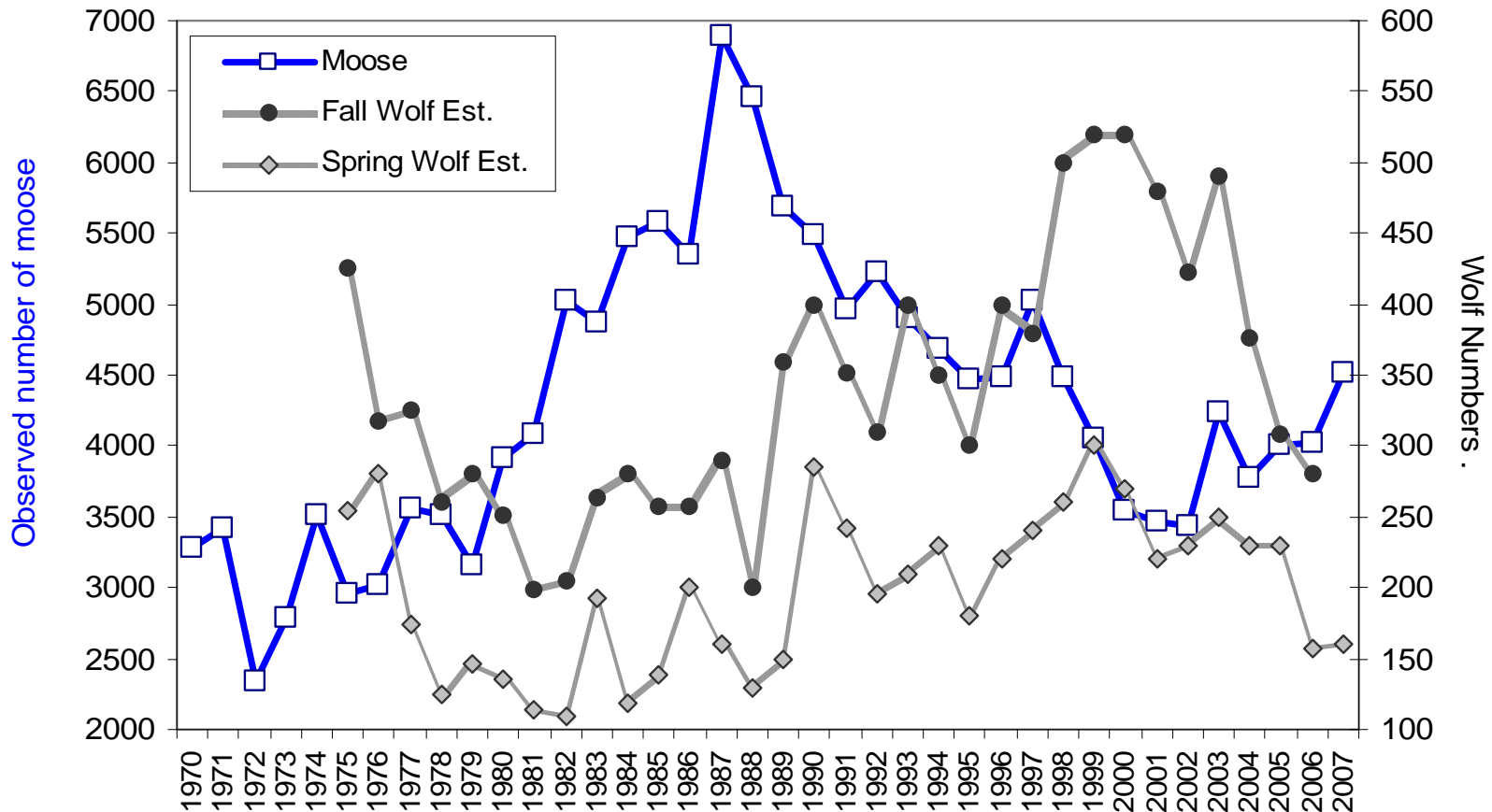


MOOSE SURVEY RATIOS



MOOSE and WOLVES

GMU 13
TOTAL MOOSE OBSERVED
IN CONTINUOUS COUNT AREAS AND UNIT-WIDE WOLF ESTIMATES



Moose Population Future Trends

GMU 13

MOOSE & WOLF EXPECTED TRENDS POST- SDA
IN CONTINUOUS COUNT AREAS AND UNIT-WIDE WOLF ESTIMATES

